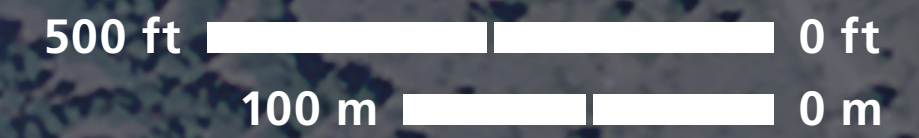


Davis Creek Regional Park



Trail Access Information

Trail	Nature Trail	Ophir Creek Trail	Discovery Trail
Length	0.7 mi	7.5 mi	1.7 mi
Grade			
Typical	6.5%	10.7%	8.4%
Maximum	128 ft is 20–34%	218 ft is 30–40%	558 ft is 20–45%
Cross Slope			
Typical	4.7%	3.7%	5.2%
Maximum	105 ft is 15–30%	550 ft is 15–24%	713 ft is 12–21%
Tread Width			
Typical	33 in	51 in	30 in
Minimum	12 in	18 in	12 in
Surface			
Type	Soil	Soil	Soil
Typical Firmness	0.18 in (worst 0.60 in)	0.18 in (worst 0.60 in)	0.18 in (worst 0.60 in)
Typical Stability	0.39 in (worst 0.59 in)	0.55 in (worst 0.91 in)	0.39 in (worst 0.61 in)
Surface Firmness			
Surface Stability			

WARNING: Trail conditions may have changed since June 2009 when these trails were assessed. Temporary obstacles were not mapped. Standard maximum ramp grade is 8.3%.

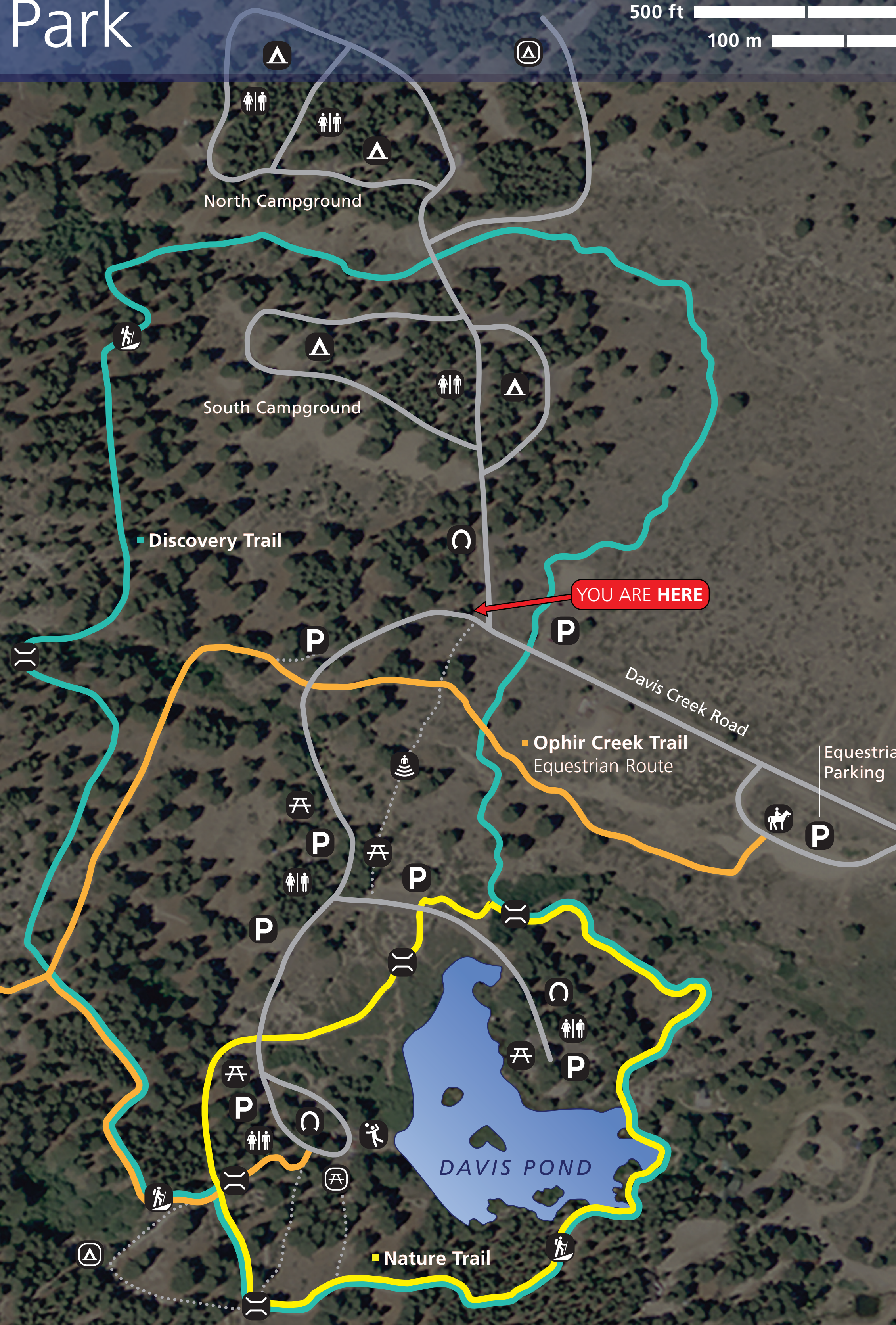
Funded by the Nevada Recreational Trails Program.
Sign created by Beneficial Designs, Inc., using data collected by a certified trail assessment coordinator.

Trail Use

- Hikers
- Bikes
- Dogs on Leash
- Equestrians
Ophir Creek Trail ONLY
- No Motor Vehicles

Legend

- Amphitheater
- Bridge
- Campground
- Horseshoes
- Maximum Grade
- Parking
- Picnic Area
- Restroom
- Sand Volleyball
- Group Camp Reservation Area
- Lakeview Picnic Reservation Area
- Secondary Trail
- Road



To Tahoe Rim Trail
7 mi (11.3 km)

Old Highway 395

