



CARCIONE AND CANEPA RANCH

Recreation Access Plan



DESIGNWORKSHOP

WELCOME!

Today's presentation will discuss:

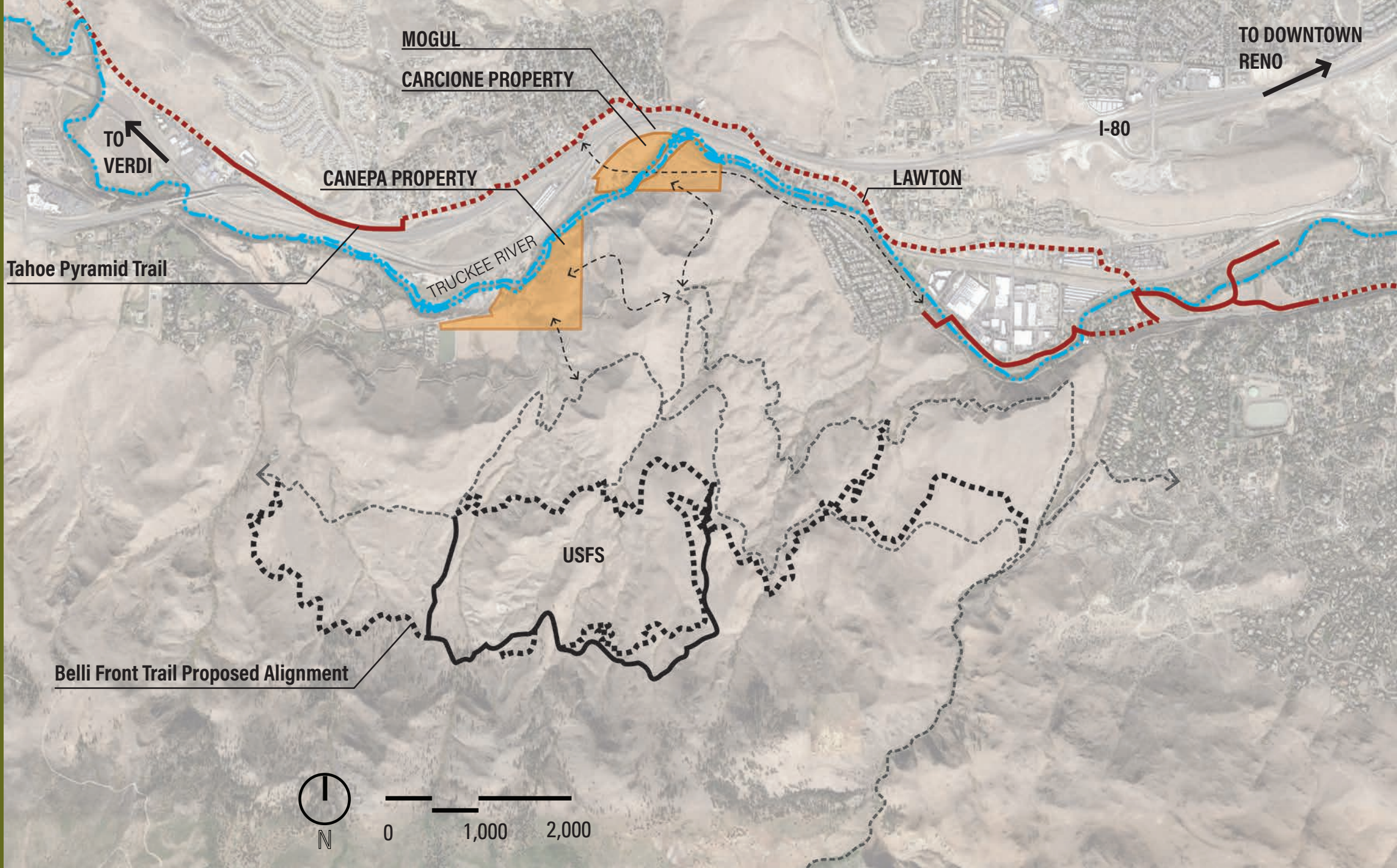
- Vision
- Schedule
- Engagement
- Goals & Strategies
- Existing Conditions
- Current Use
- Program Elements
- Initial Concept Plans

HOW TO PARTICIPATE



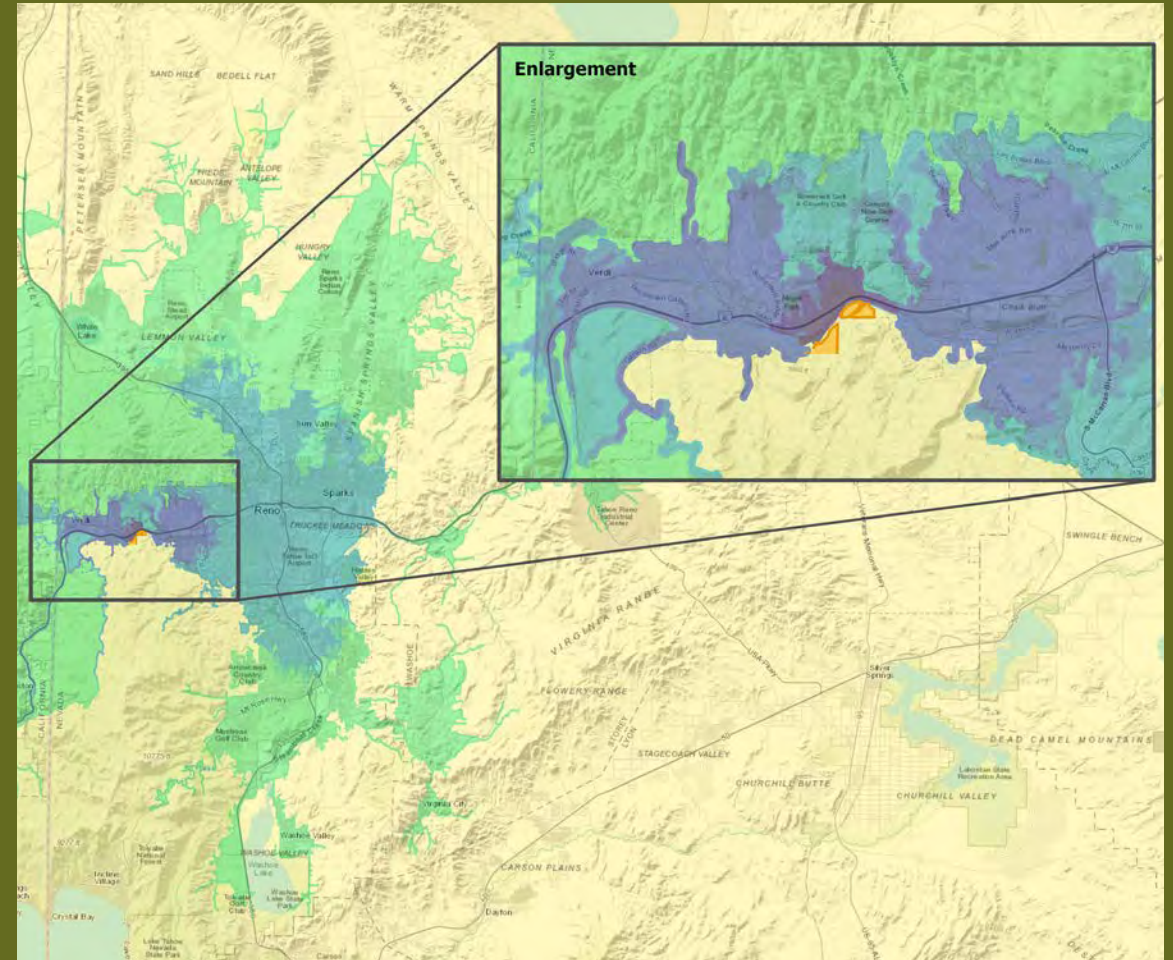
- Listen to the presentation
- Ask questions in the q&a box
- Share the survey link below to visit the maps and provide feedback
<https://tinyurl.com/swrxyh4a>
- Share the presentation video after it's posted!

REGIONAL CONTEXT MAP

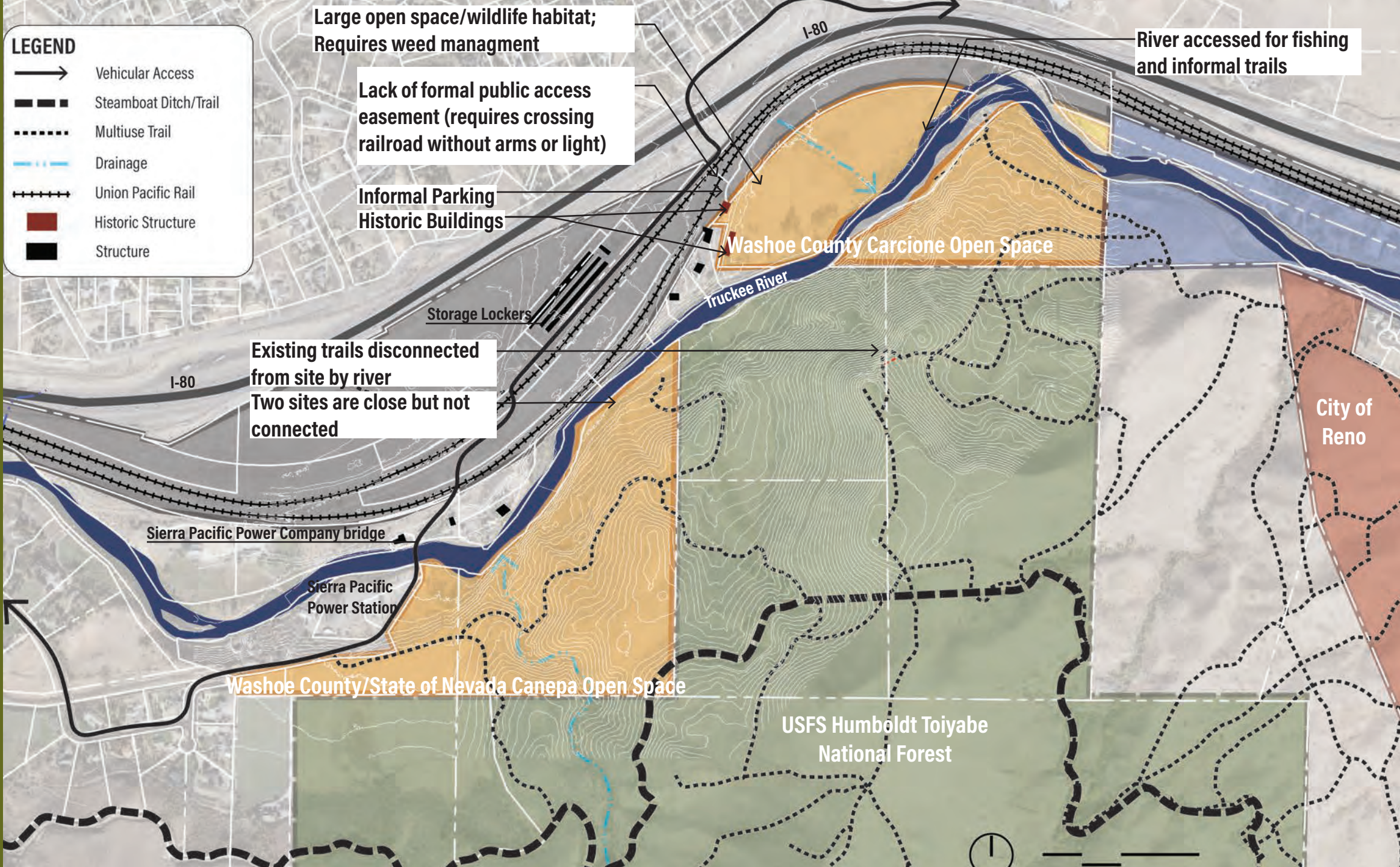


HOW CLOSE DO YOU LIVE?

- Within 1 mile of the Carcione and Canepa Open Spaces (near Mogul)
- Between 1 to 5 miles of the Carcione and Canepa Open Spaces (near Mogul)
- Between 5 to 15 miles of the Carcione and Canepa Open Spaces (near Mogul)
- Between 15 to 30 miles of the Carcione and Canepa Open Spaces (near Mogul)
- More than 30 miles from the Carcione and Canepa Open Spaces (near Mogul)



CARCIONE OPEN SPACE



CARCIONE OPEN SPACE



CARCIONE OPEN SPACE



CARCIONE OPEN SPACE



CARCIONE OPEN SPACE










CARCIONE OPEN SPACE



CANEPA OPEN SPACE

LEGEND

-  Vehicular Access
-  Steamboat Ditch/Trail
-  Multiuse Trail
-  Drainage
-  Union Pacific Rail
-  Historic Structure
-  Structure

Two sites are close but not connected

Washoe County Carcione Open Space

Lack of public trailhead; Informal parking is in railroad property

River used for water play and launch of watercraft

Sierra Pacific Power Company bridge

Storage Lockers

Sierra Pacific Power Station

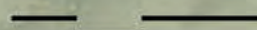
Washoe County/State of Nevada Canepa Open Space

Existing trails connect to backcountry trail system

Steamboat Ditch Trail

USFS Humboldt Toiyabe National Forest

City of Reno



CANEPA OPEN SPACE



CANEPA OPEN SPACE



CANEPA OPEN SPACE



CANEPA OPEN SPACE

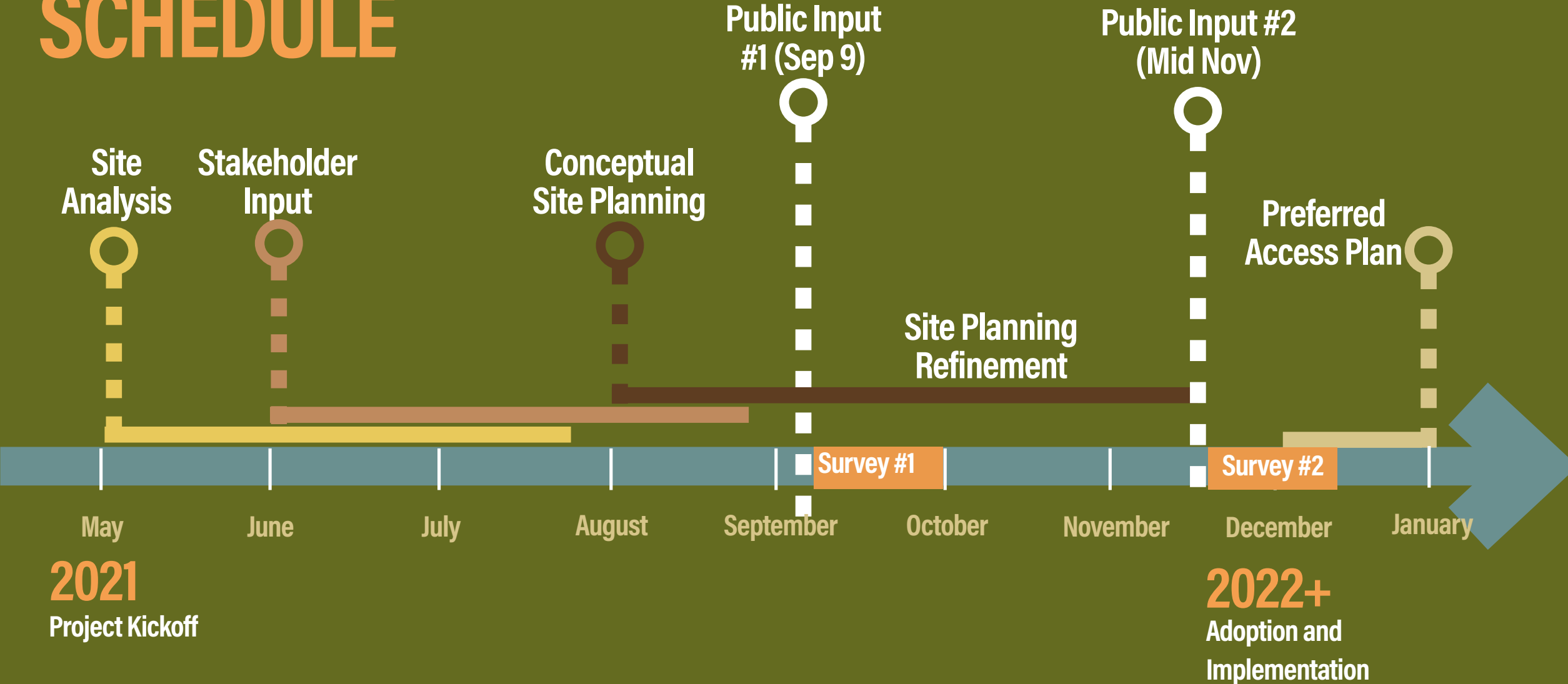


VISION

A decorative graphic consisting of a dashed line that starts with a small circle and curves across the top of the slide. A solid blue line curves along the right side of the slide.

- Create a comprehensive Recreation Access Plan for the Carcione Open Space and Canepa Ranch properties
- Improve frontcountry and Truckee River access
- Improve backcountry access to the Sierra
- Connect to existing and future trails
- Connect users to the site's history and natural resources
- Improve public safety and ADA accessibility
- Protect and conserve natural resources

SCHEDULE



STAKEHOLDER ENGAGEMENT

Onsite and Online meetings with:

- Adjacent Residents
- City of Reno
- Local Trail Advocates
- Nevada Department of Wildlife
- Nevada State Lands
- One Truckee River
- U.S. Forest Service
- Washoe County



GOALS & STRATEGIES



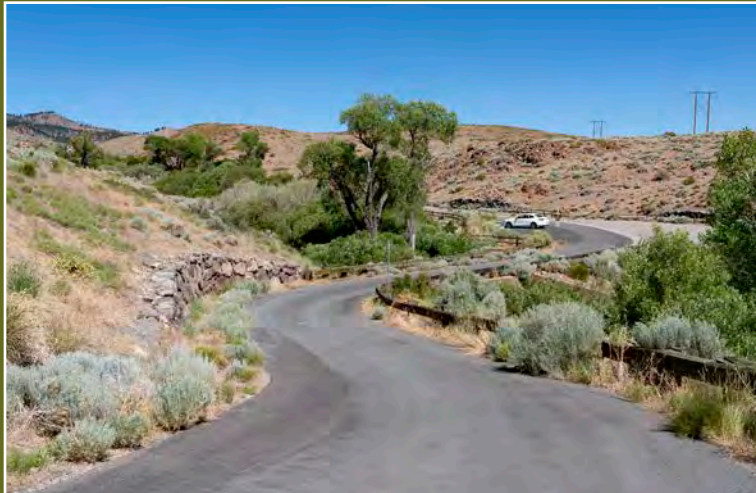
Address recreation needs within Washoe County by:

- Improve **public access** to County-owned parcels (**hike, bike, fish, splash**)
- **Connect** the County parcels **to the larger** open space and **trail network**
- **Disperse capacity** from other areas
- Manage visitor use
- **Protect** natural and cultural resources

PROGRAM ELEMENTS

Parking/Access

- Vehicular Access to both sites
- Parking Areas



PROGRAM ELEMENTS

Trailhead Amenities

- Restrooms
- Map Kiosk/Signage
- Trash Receptacles, Drinking Fountains, Seating



PROGRAM ELEMENTS

Day Use Areas

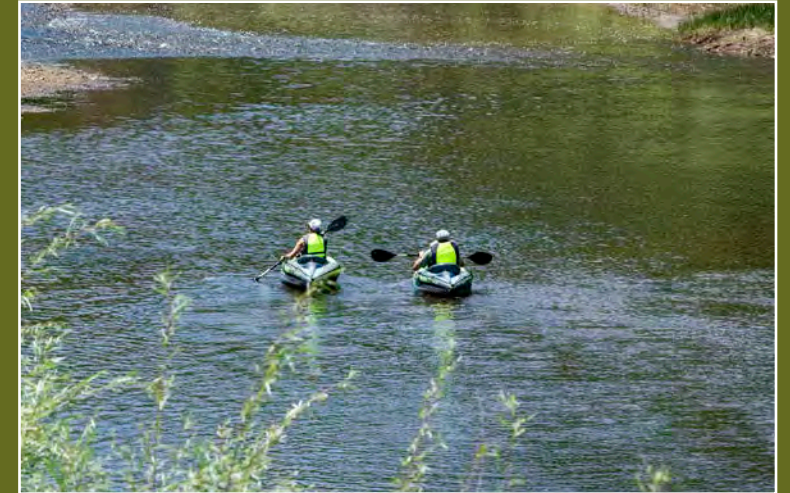
- Picnic & Seating Areas
- Shade Structures, Nature Viewing



PROGRAM ELEMENTS

Truckee River Access

- River Play
- Non-Motorized Watercraft Access
- Fishing Access



PROGRAM ELEMENTS

Frontcountry Trails

- Loop Trails
- Interpretive Elements



PROGRAM ELEMENTS

Backcountry Access

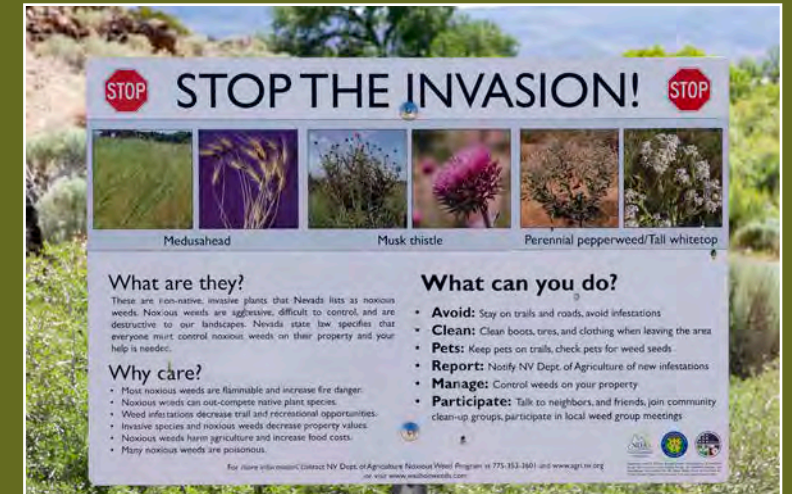
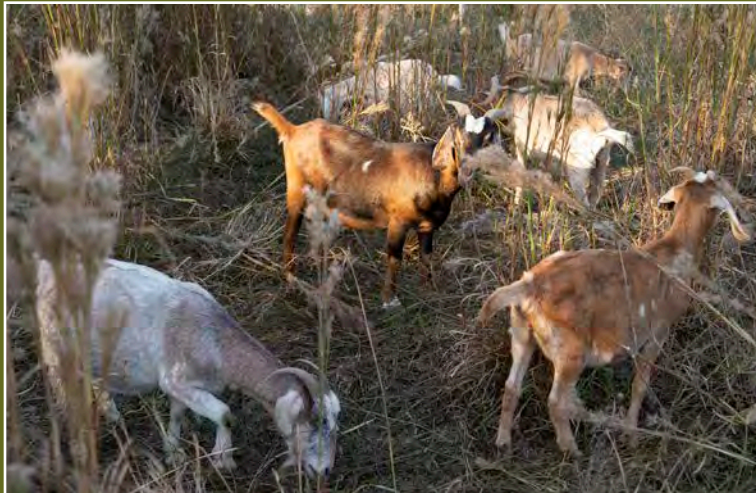
- Regional Trail Connectivity
- Wayfinding



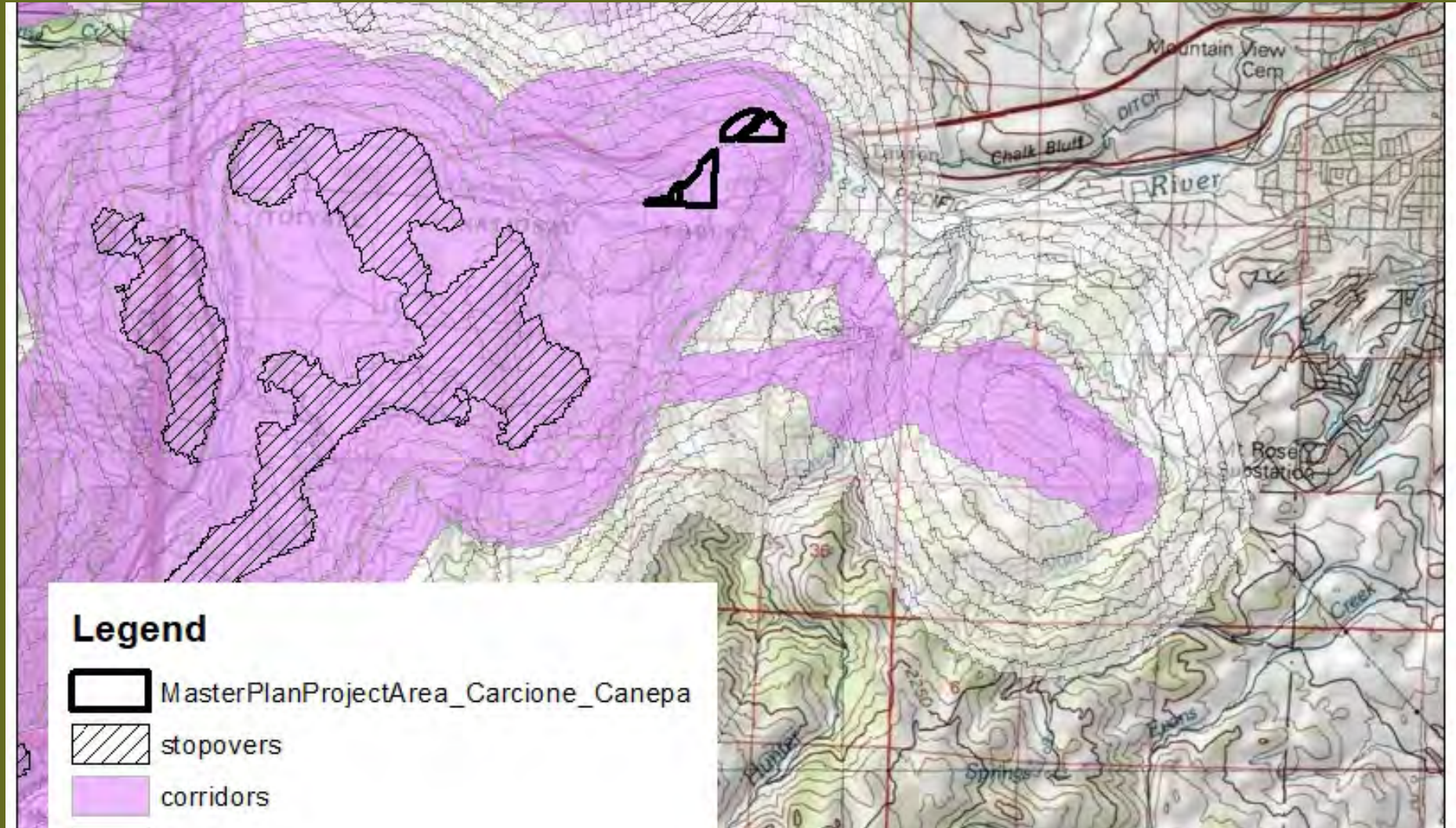
PROGRAM ELEMENTS

Natural and Cultural Resource Protection

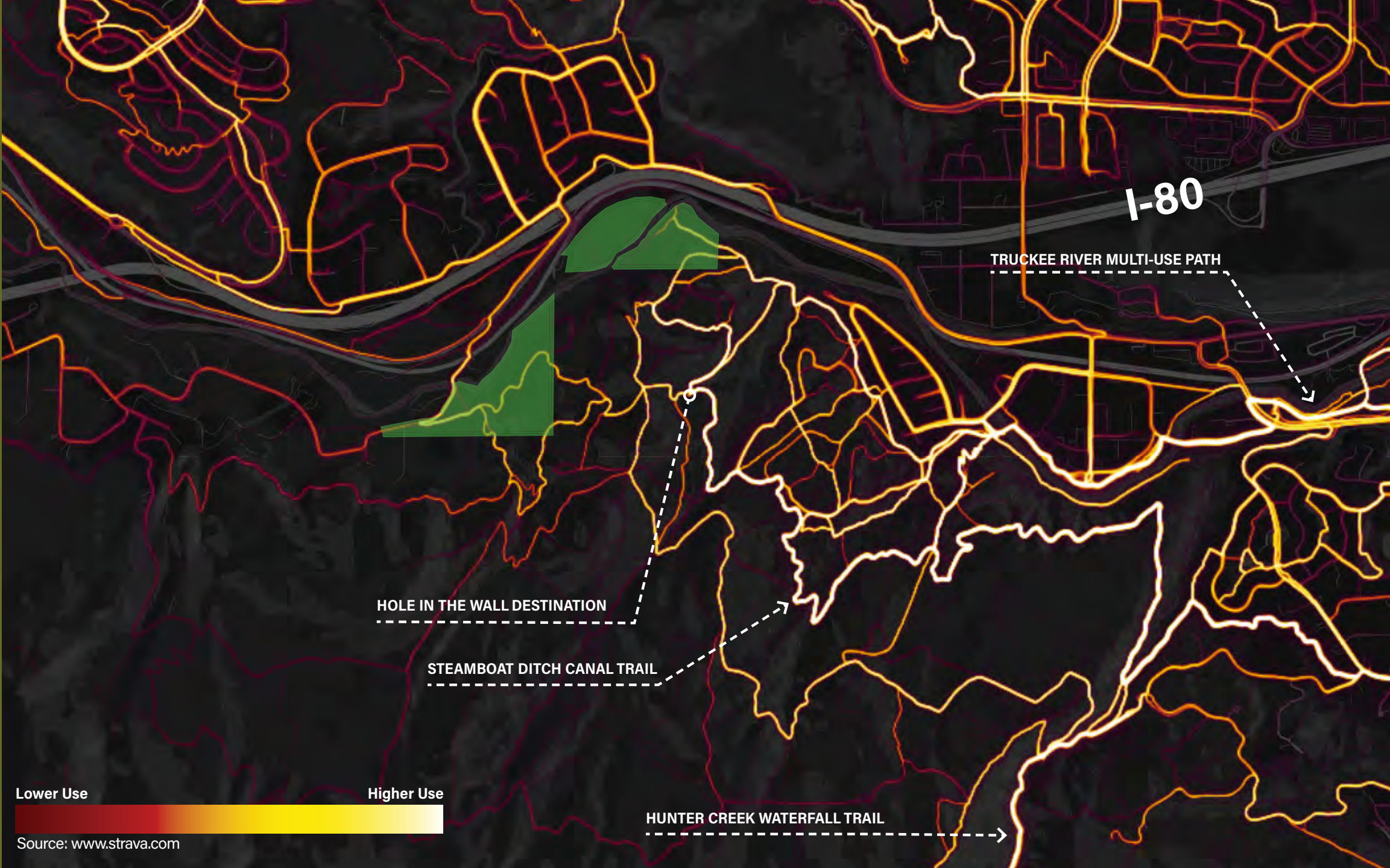
- Noxious Weed Management
- Wildlife Habitat



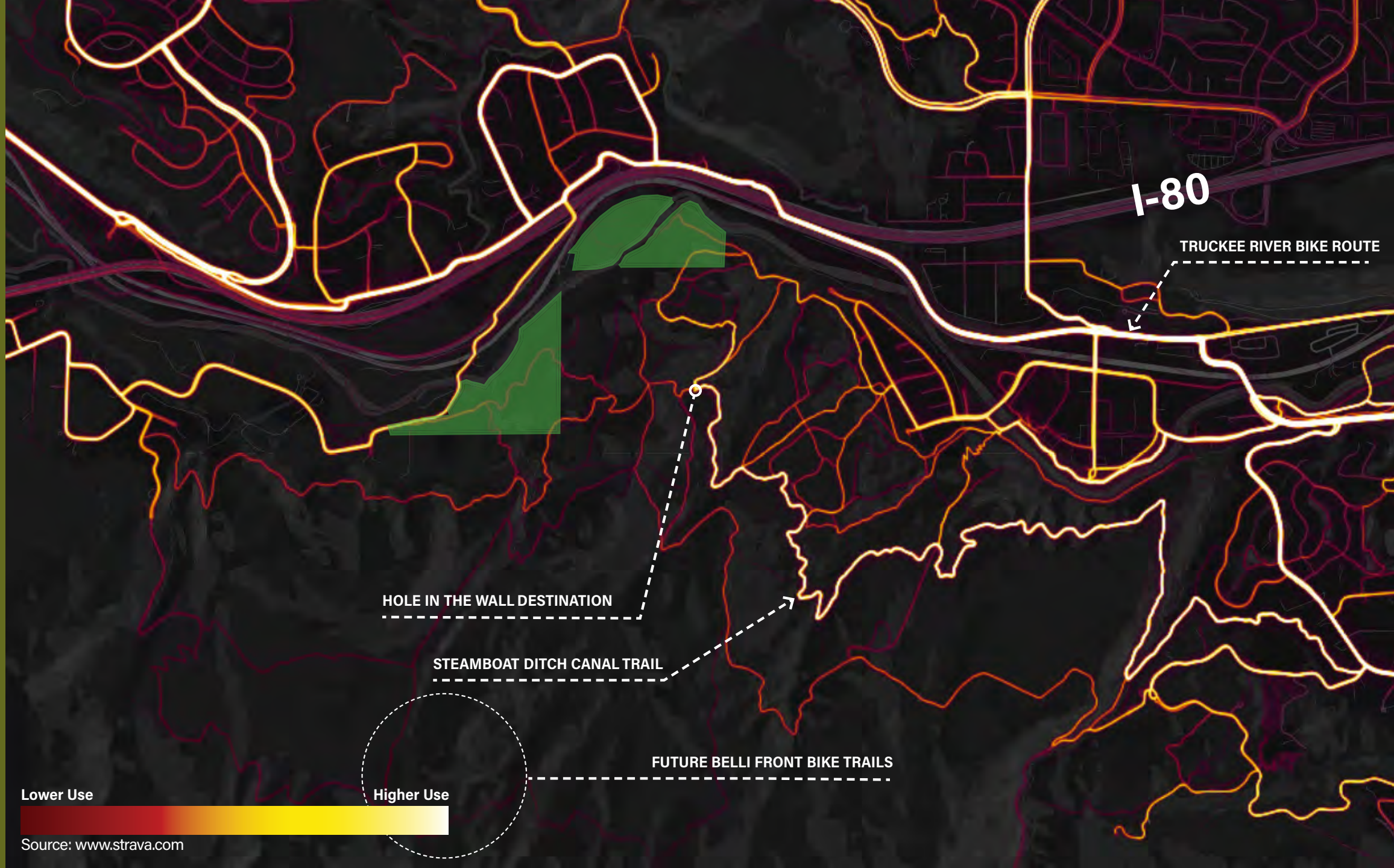
MULE DEER WINTER RANGE



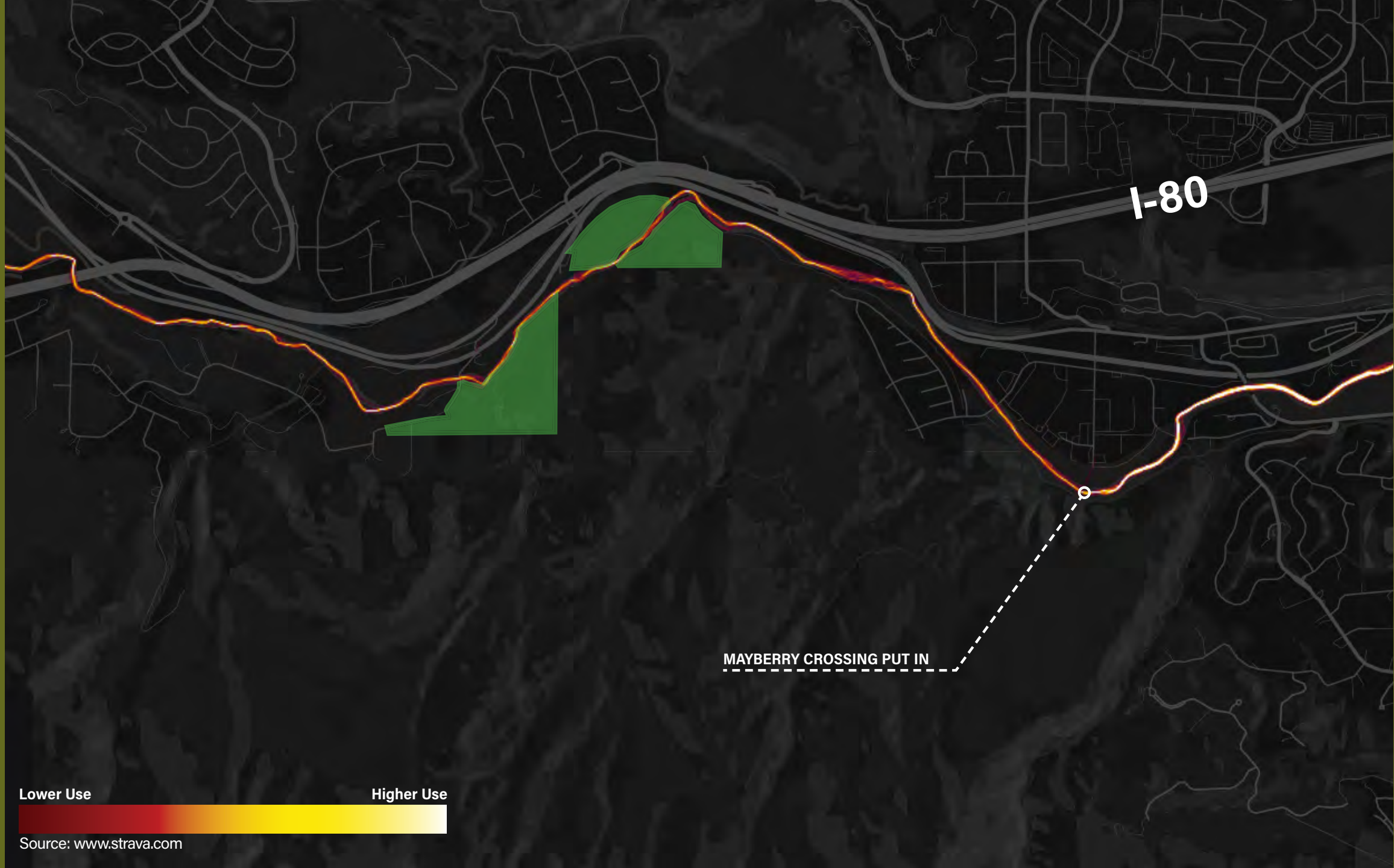
WALK/HIKE HEAT MAP



BIKE HEAT MAP



RIVER USE HEAT MAP

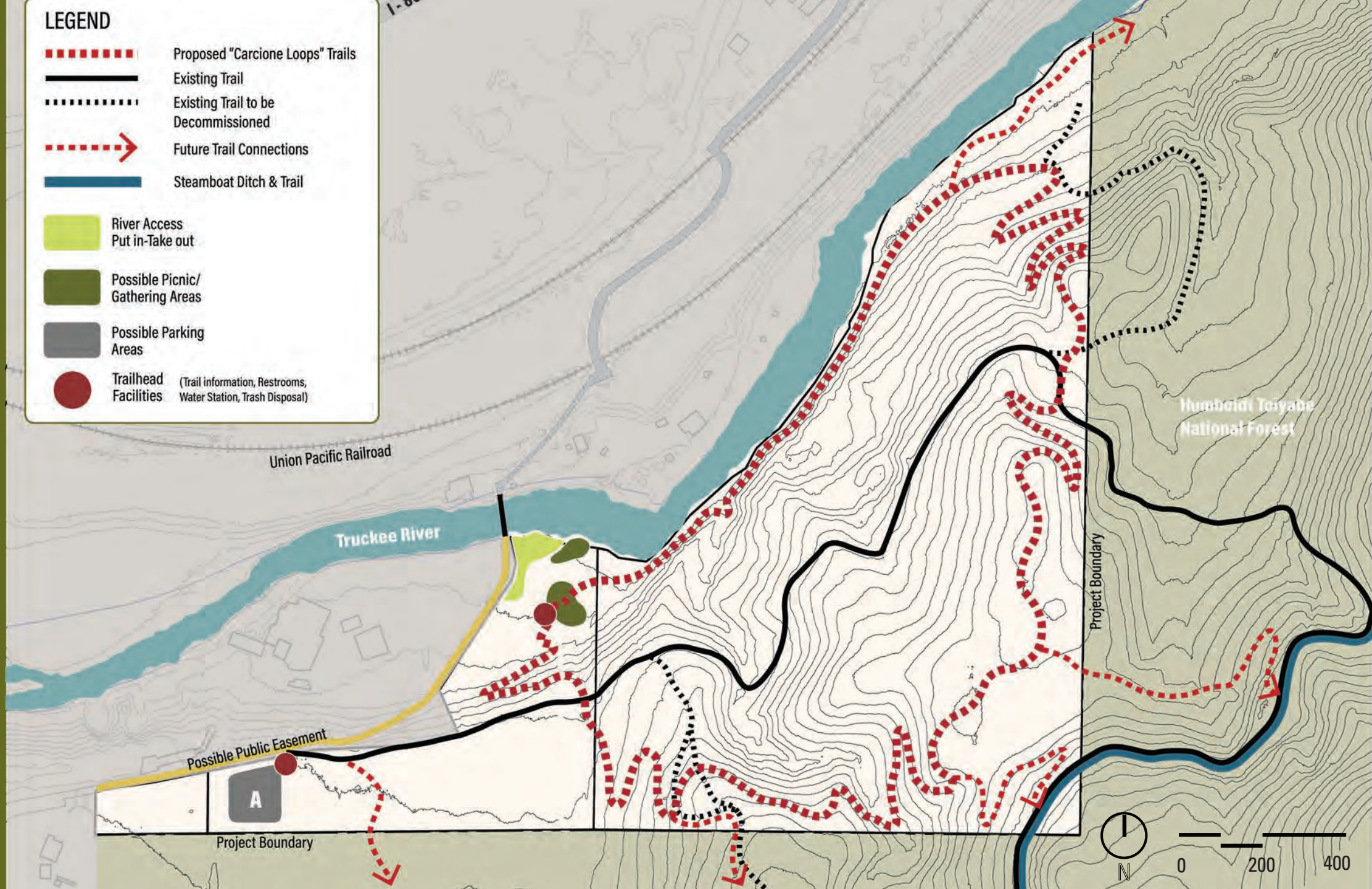


Lower Use

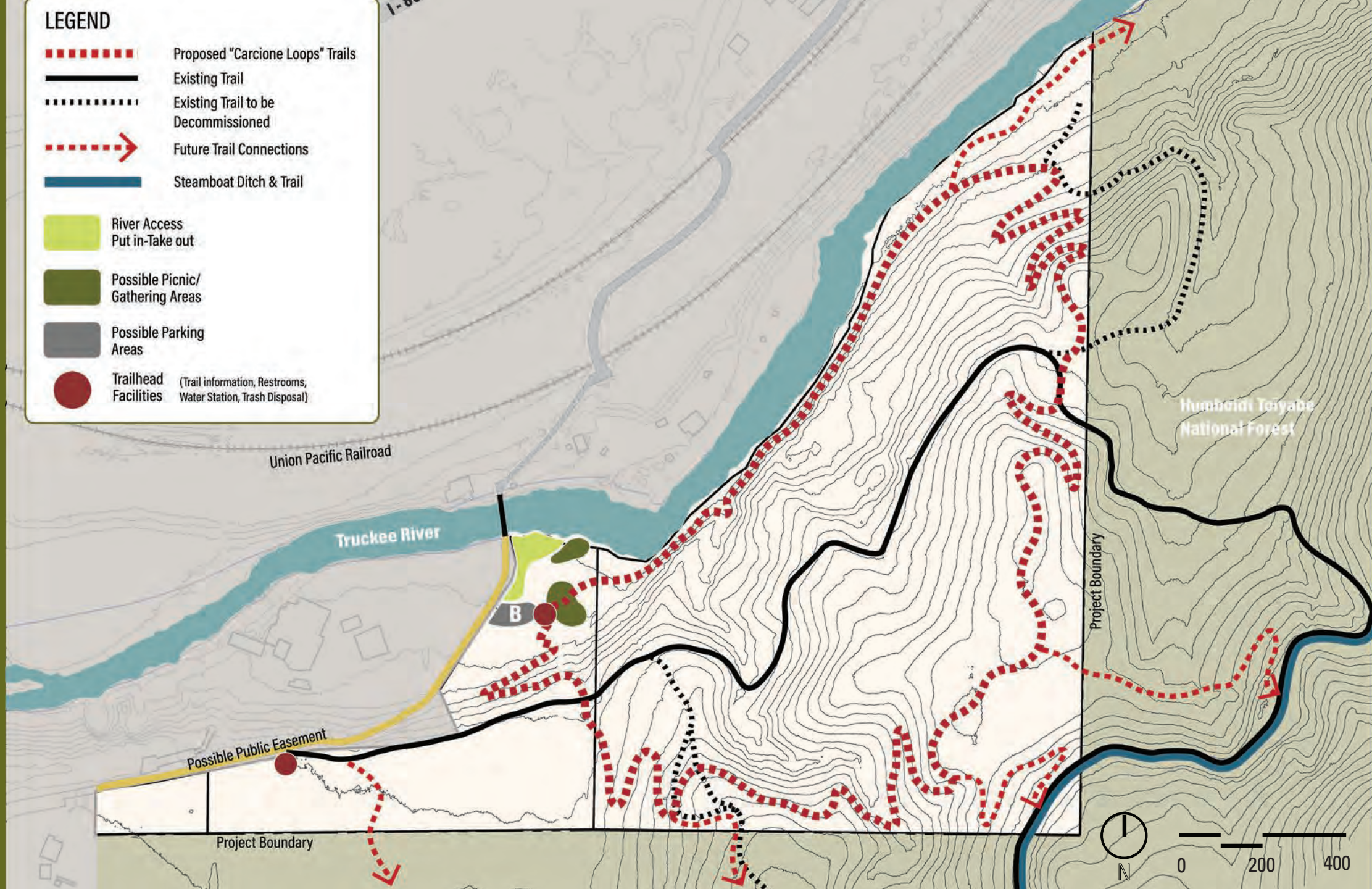
Higher Use

Source: www.strava.com

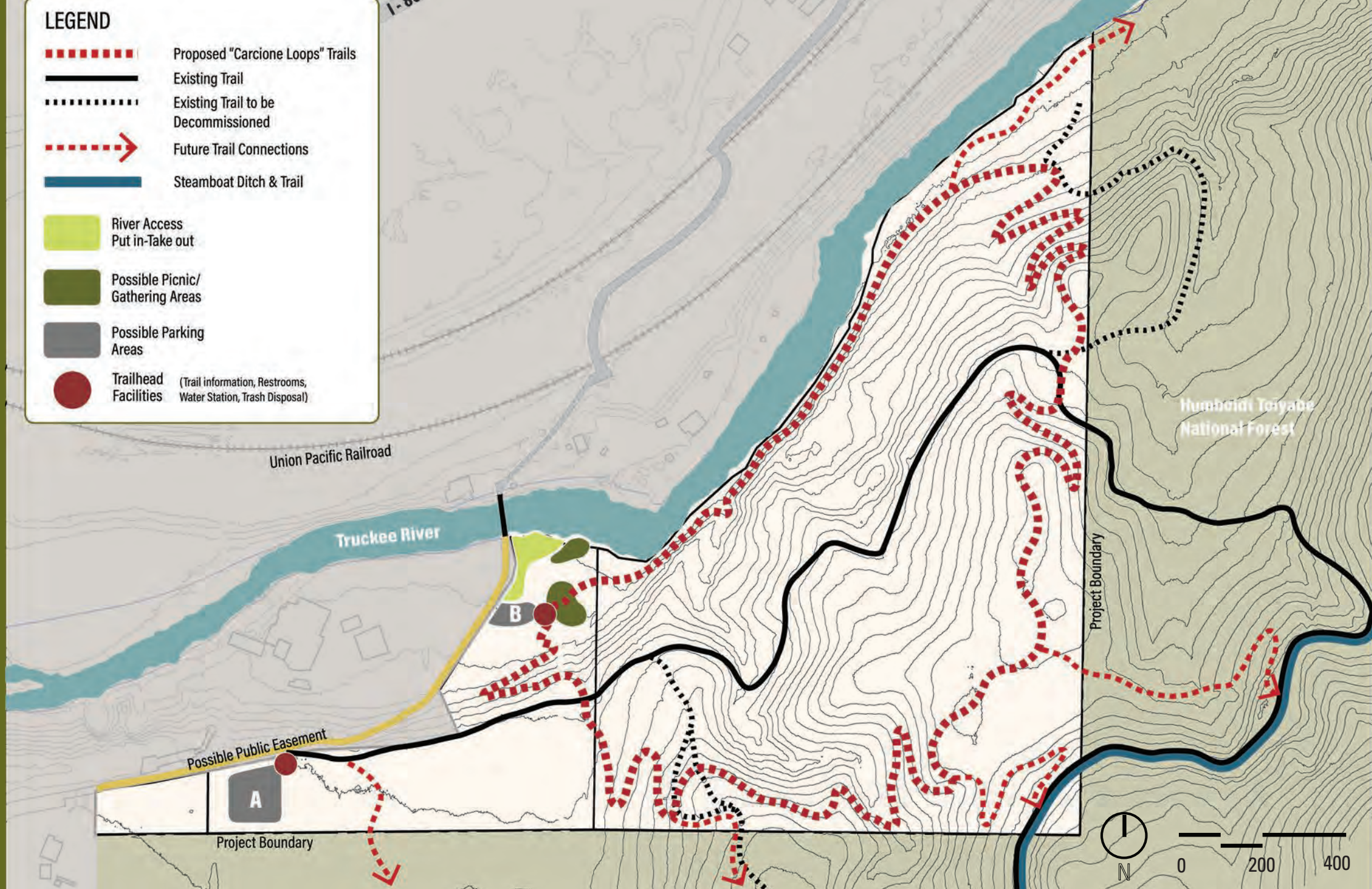
CANEPA OPTION A



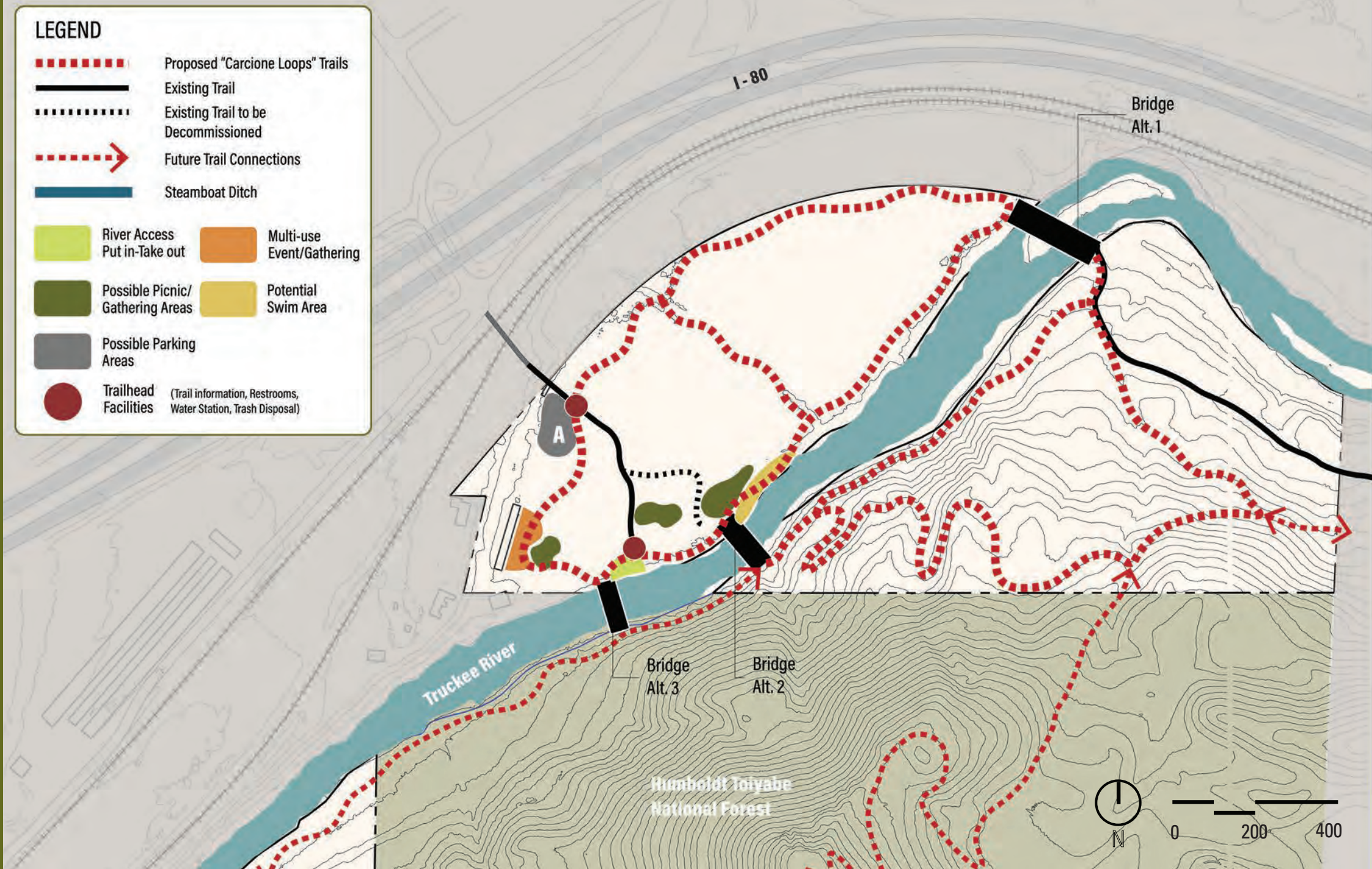
CANEPA OPTION B



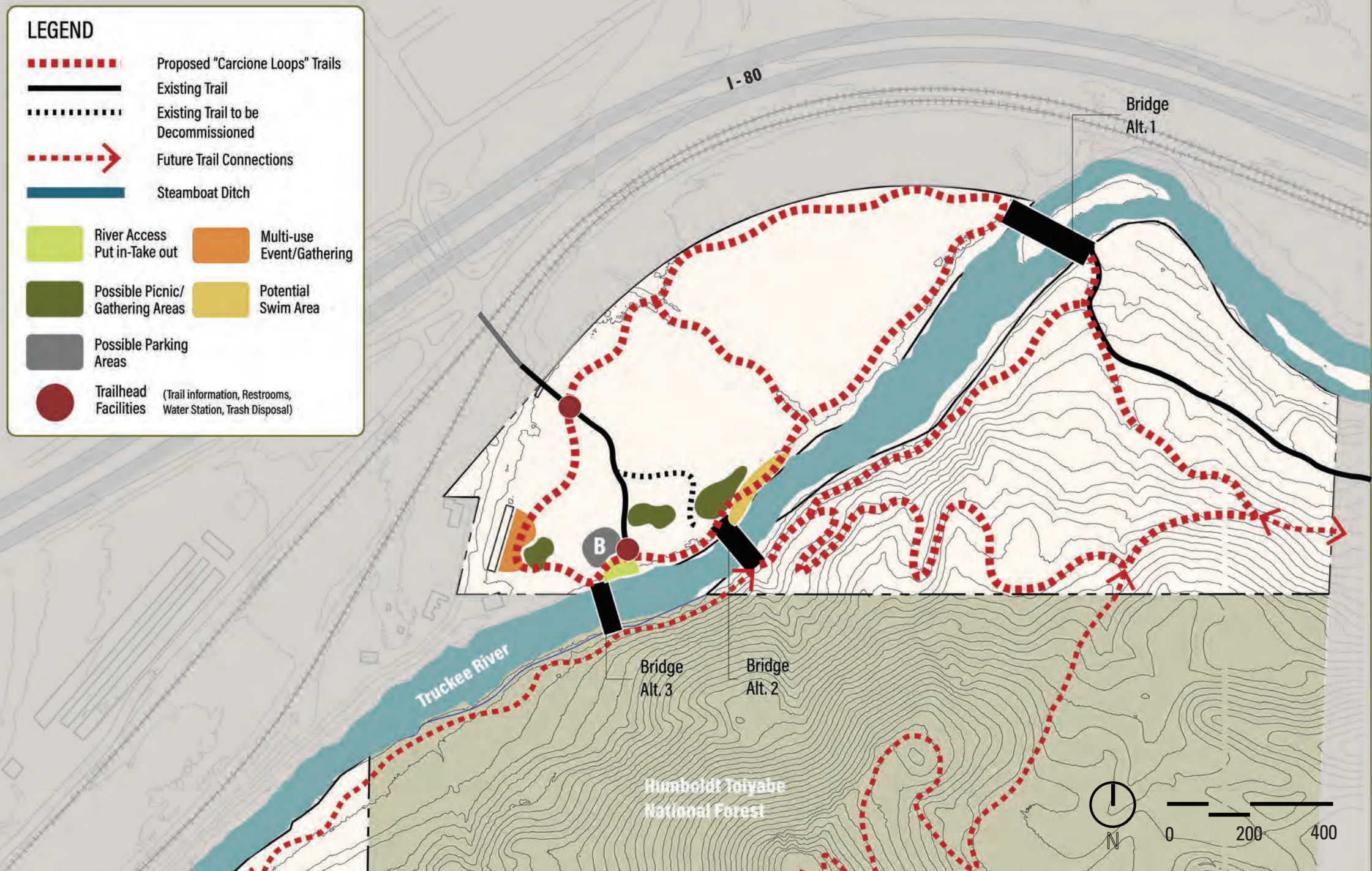
CANEPA OPTION A&B



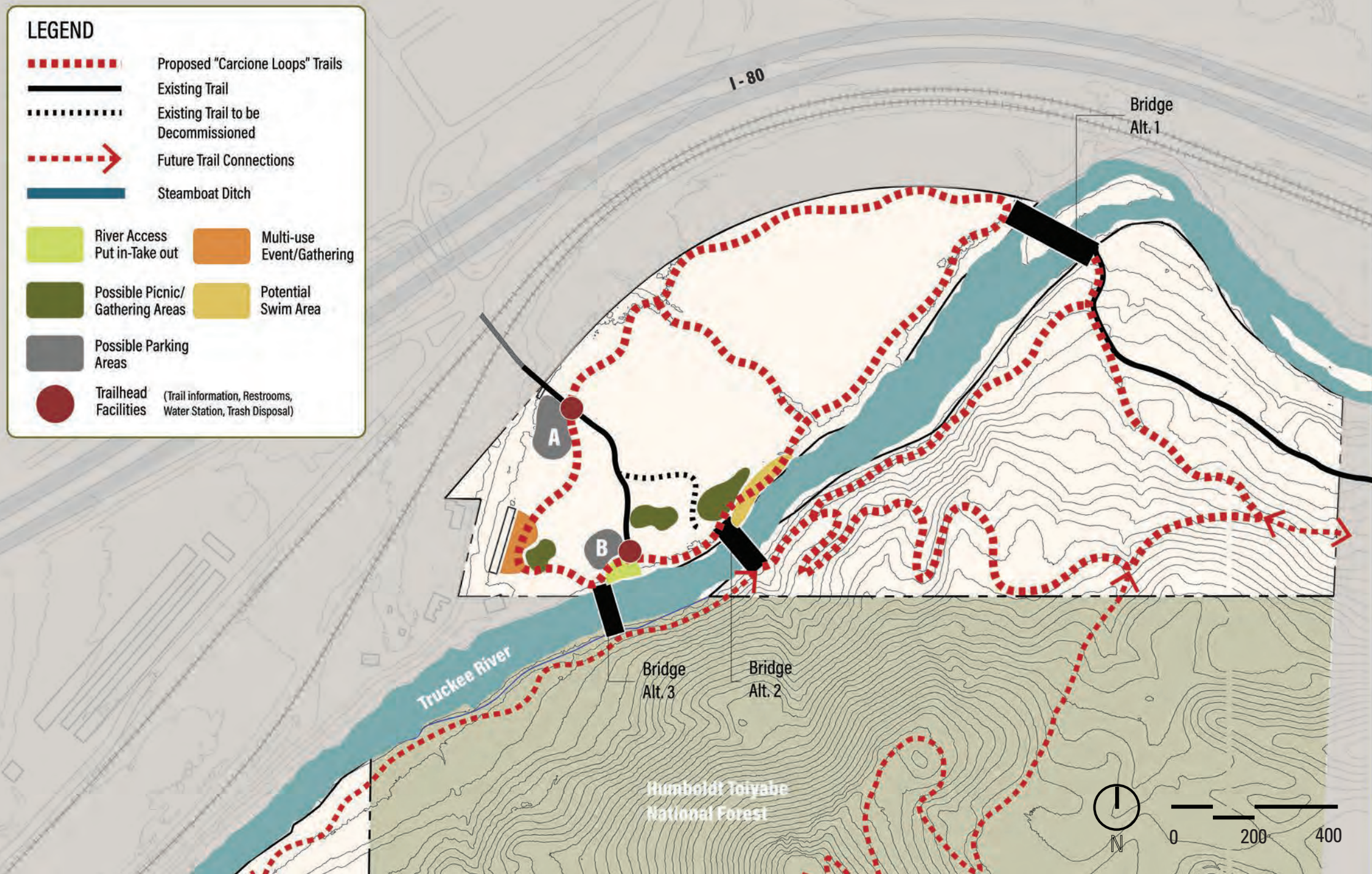
CARCIONE OPTION A



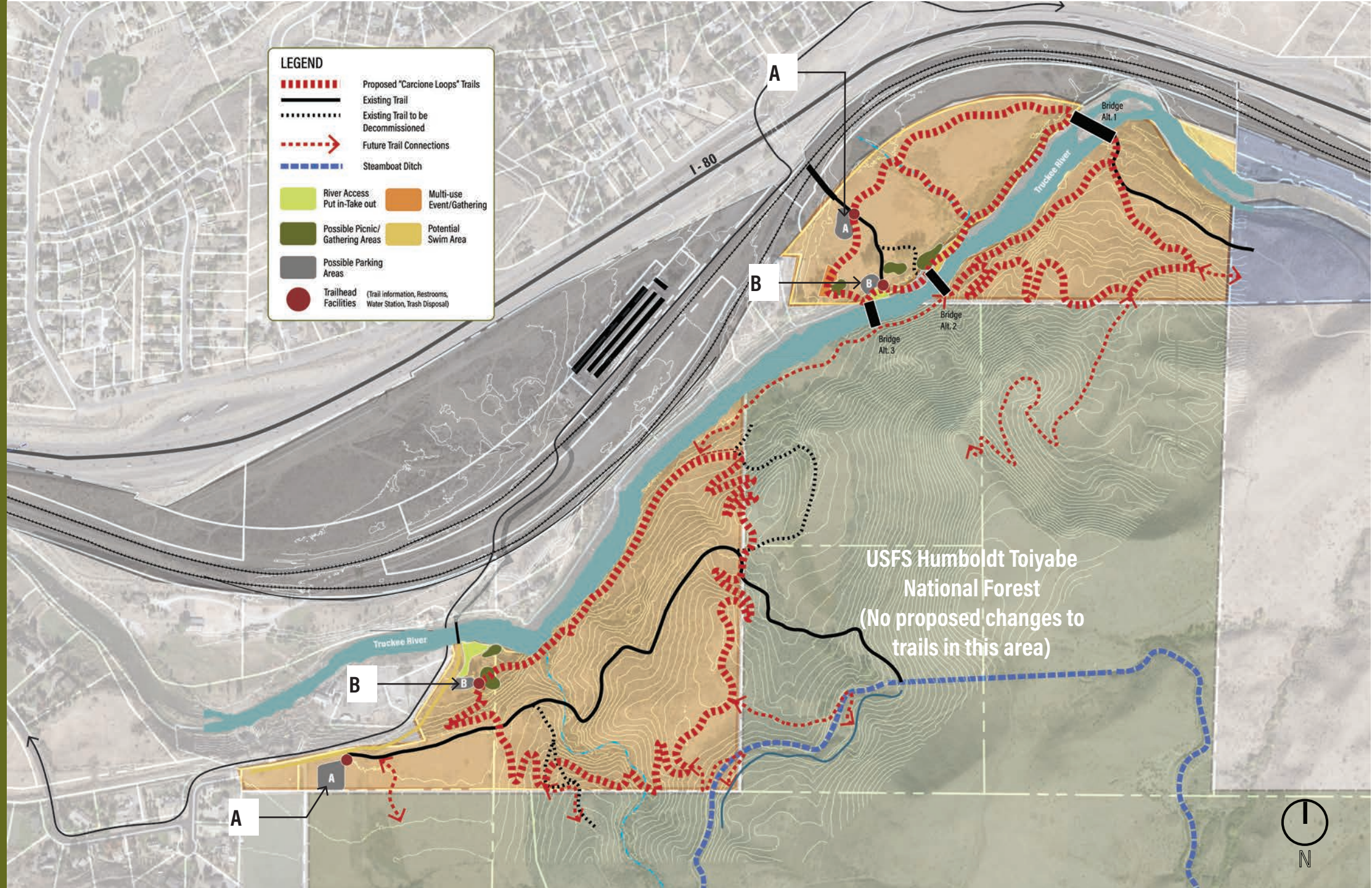
CARCIONE OPTION B



CARCIONE OPTION A&B

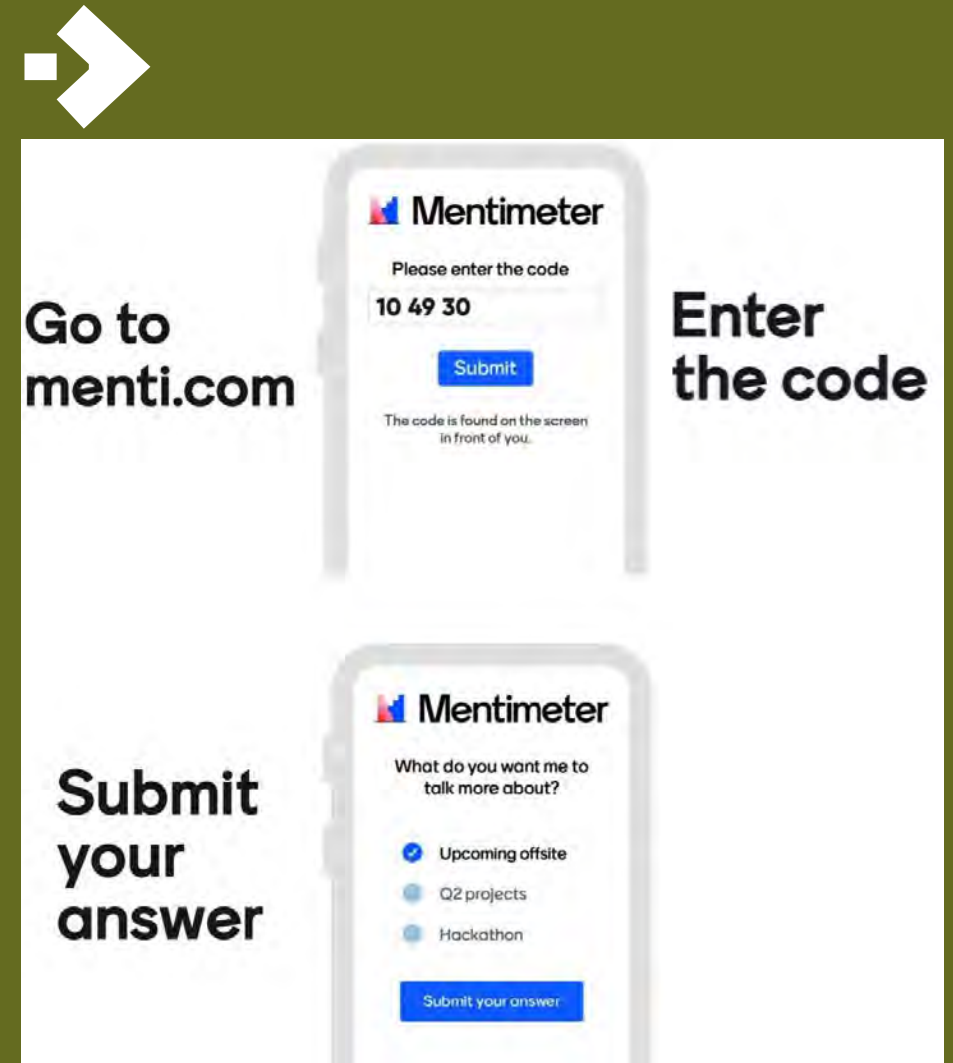


OVERALL CONCEPT OPTIONS



INTERACTIVE FEEDBACK | HOW TO USE MENTIMETER

- If possible, use your cell phone while your computer stays on the Zoom webinar screen
- If using your computer only, go to another website while keeping your Zoom screen active
- When instructed go to www.menti.com
- Enter the numbers on the Zoom screen (no spaces needed)
- Answer the questions and see live results on the Zoom screen when you hit submit



Questions & Answers

CARCIONE AND CANEPA RANCH

Recreation Access Plan



DESIGNWORKSHOP