

Washoe County Community Services Department

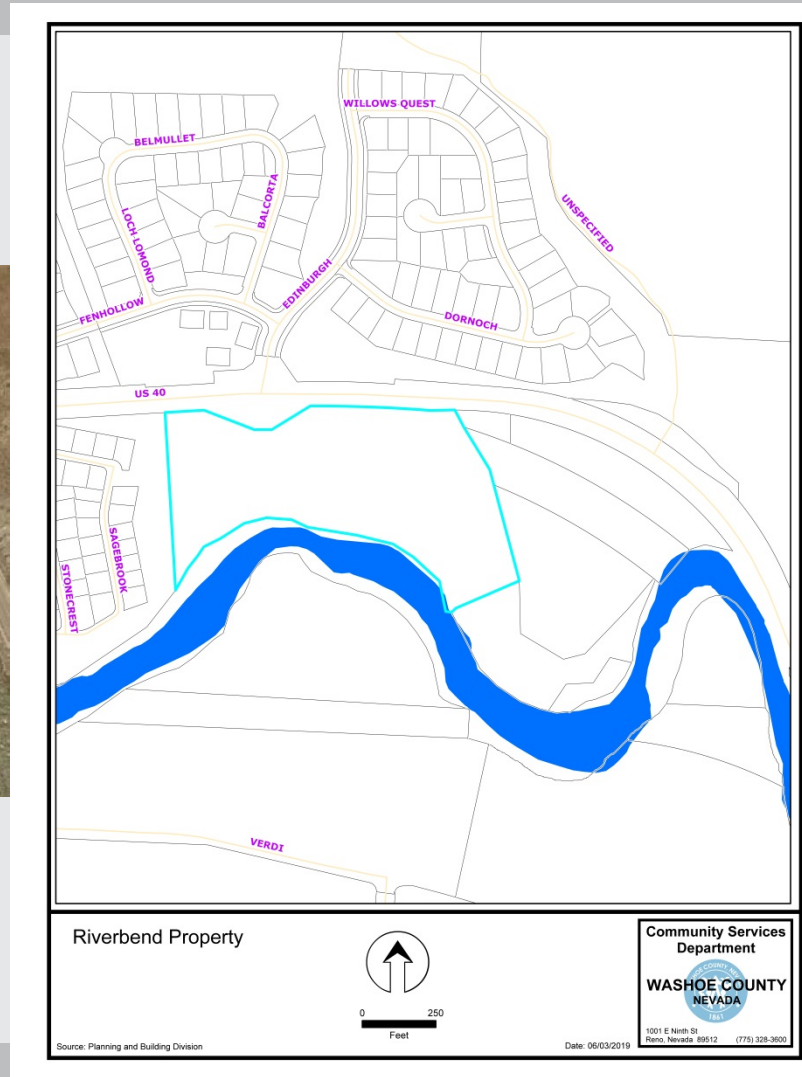
Riverbend Boundary Line Adjustment



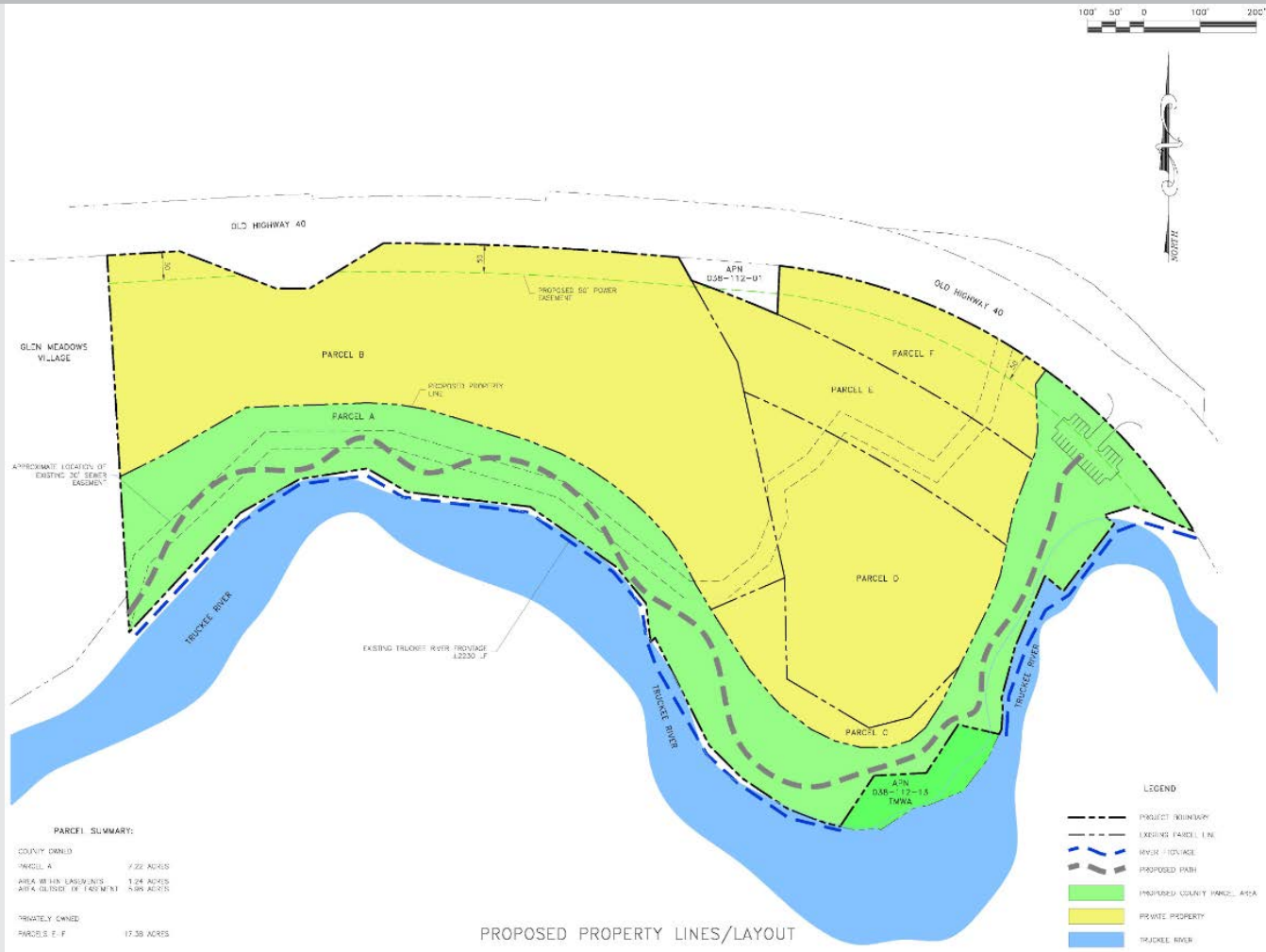
Riverbend Property



Riverbend Property



Boundary Line Adjustment Proposal



Questions?

Possible motion... “Move to recommend that Community Services Department staff negotiate an agreement to exchange Washoe County land (a portion of APN 038-100-34) for land owned by the River Bend Mobile Home Park and Storage, LLC (portions of APNs 038-112-02, 038-112-03, 038-112-04 and 038-112-12) for presentation and possible approval by the Washoe County Board of County Commissioners.”

