

3.6.23

Nevada Cares Campus





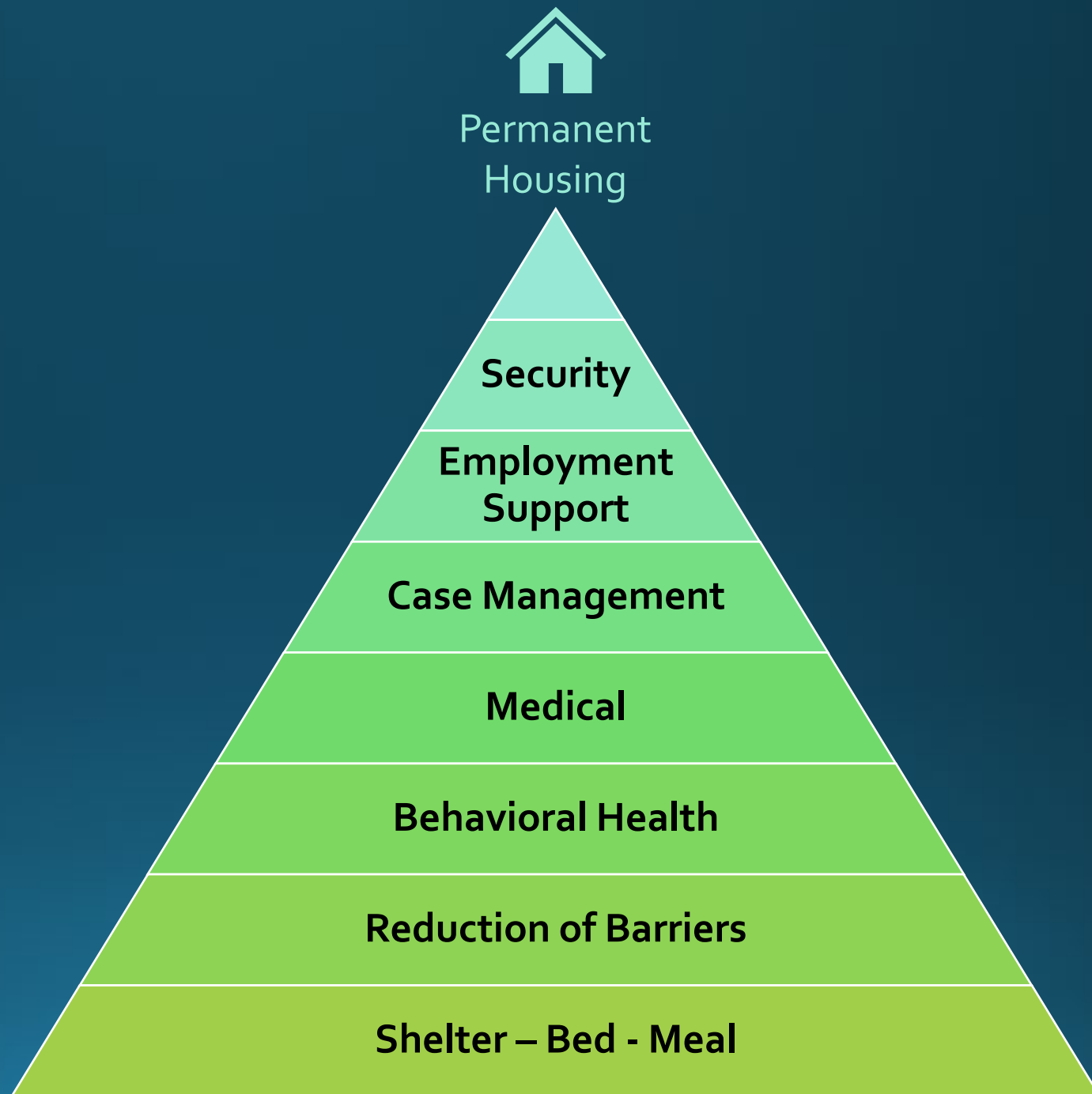
Nevada Cares Campus Program Model



Cares Campus

Housing First and Services

**Focus on
Permanent
Housing**





Cares Campus

**Cares Campus
addresses common
barriers.**

**Cares Campus is the
only option for many of
our most vulnerable.**

Property/
Partners /
Pets

No Sobriety
Requirement

No Fees,
Rent or
Income

No ID
Requirement

No
Background
or Criminal
History Check

No Prior
Program
Completion
Requirement



Nevada Cares Campus Operations & Results



Cares Campus Priorities



STAFFING &
TRAINING



SAFETY &
SECURITY



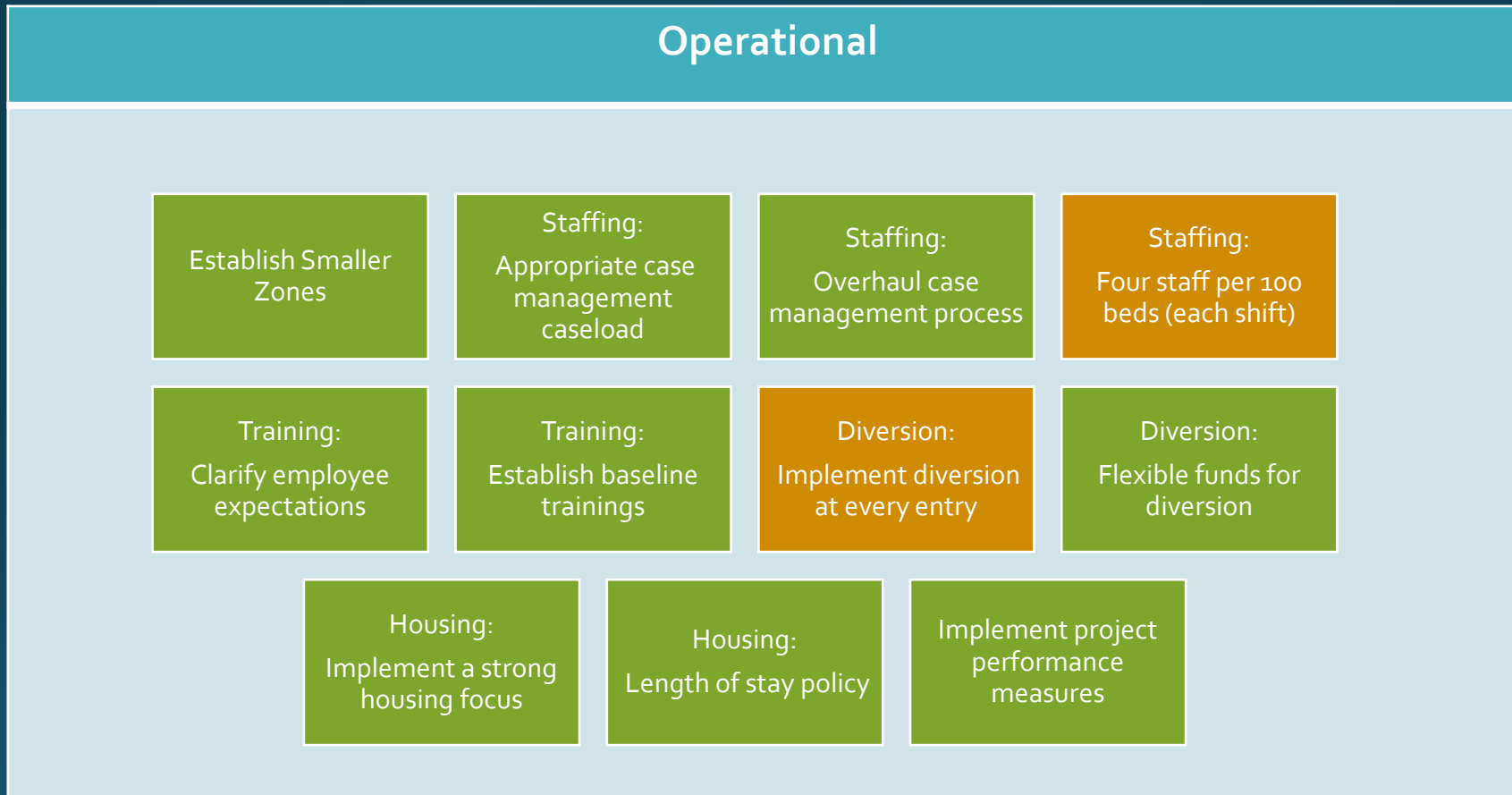
FACILITY &
CONSTRUCTION



PARTNERSHIP
DEVELOPMENT



Cares Campus—Jon DeCarmine Recommendations





Cares Campus - Cleaning Schedule

Throughout the day as needed

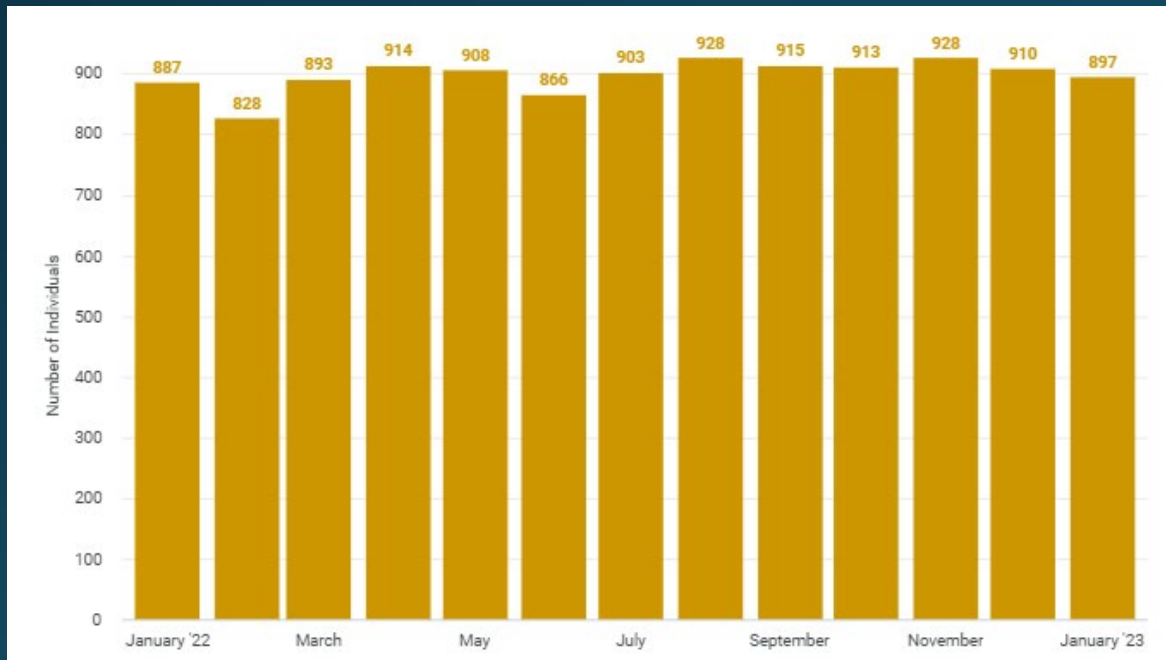
- VOA cleans up trash, sweeps and encourages participants to clean their areas.
- Two full-time facilities staff resolve any property maintenance issues.

Twice Daily	Daily	Mon, Wed, Fri	Monthly	Every other month
Qual-Econ cleans the bathrooms, showers, and laundry area. They sweep/mop the floors, empty trash, refill soap and paper towels, and disinfect surfaces.	Qual-Econ cleans the office spaces, medical trailer, and temporary buildings. They empty trash, sweep/clean the floors, and disinfect surfaces.	VOA cleans the sprung. They assist participants to get rid of trash around the bed and to change linens if necessary. VOA cleans the floors, beds, and surfaces. They use disinfectant cleaner and bug spray.	Outside areas/ sprung skin pressure washed every month	Pest Control on-site to spray for bugs, mites, and rodents.

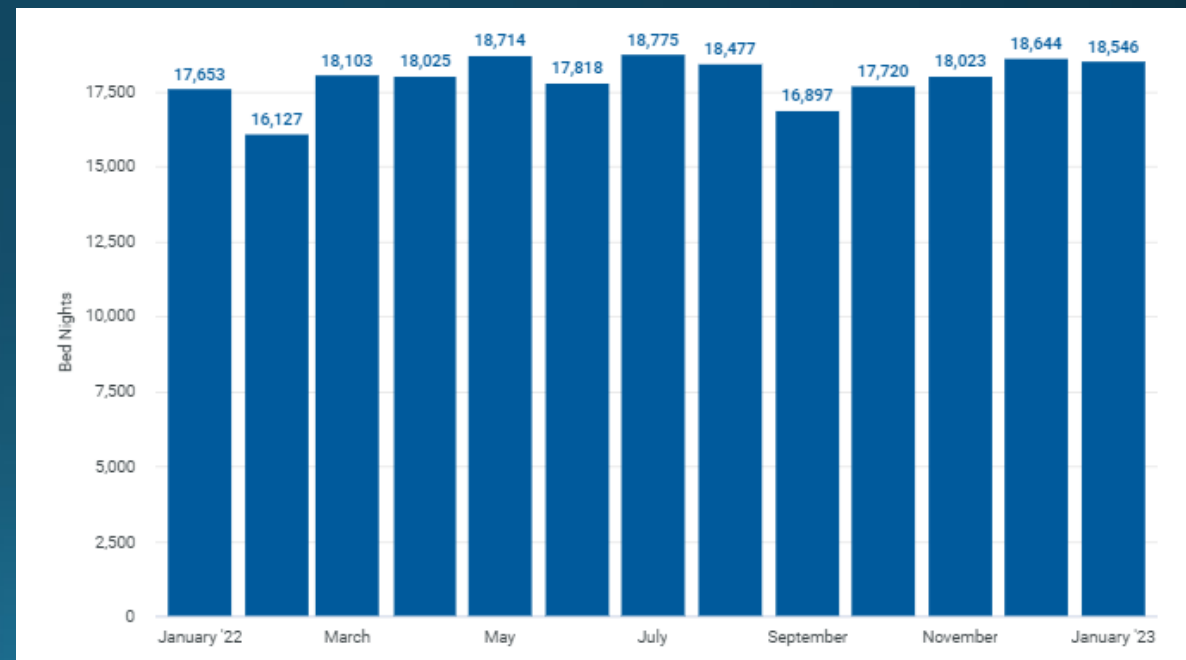


Cares Campus

Unique Clients Served
Feb 1, 2022 – Jan 31, 2023
2,849

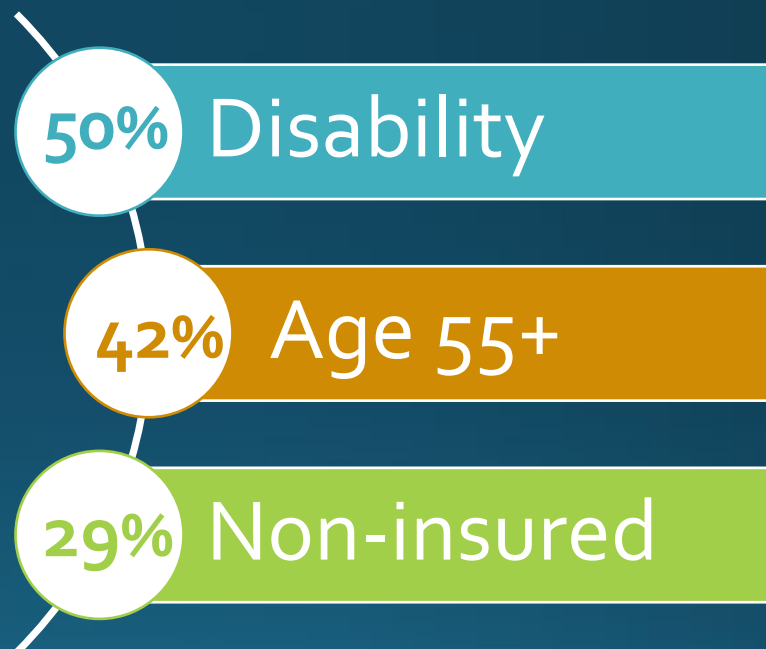
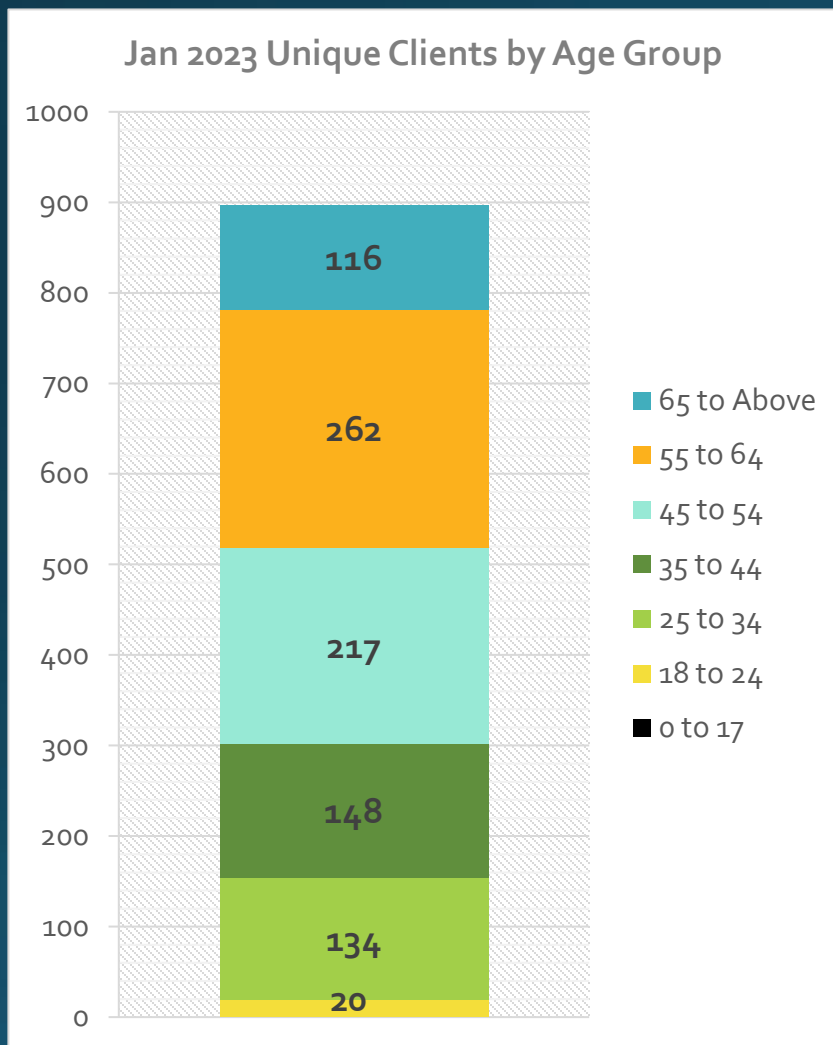


Total Bed nights
Jan 31, 2022 – Jan 31, 2023
215,869





Cares Campus





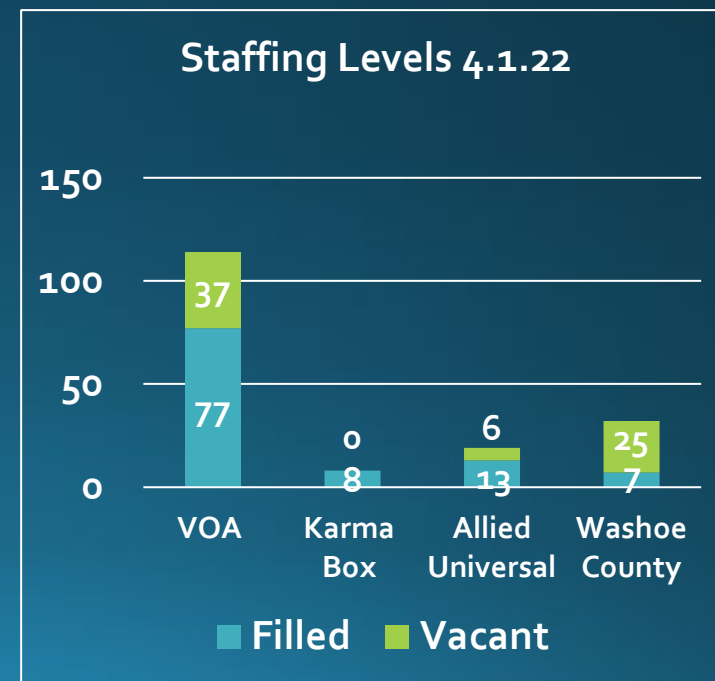
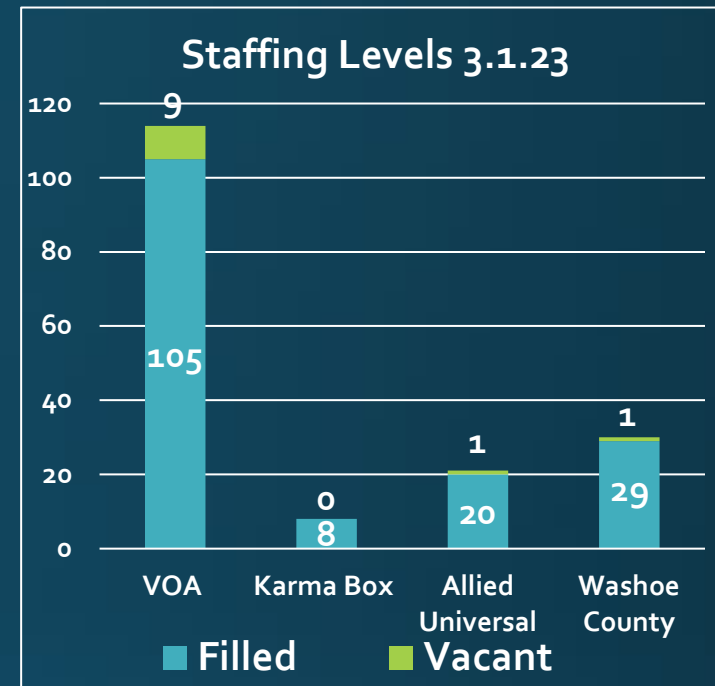
Cares Campus

Progress
Catalyst
#1

Appropriate Staffing Levels

Additional Staffing added 2022:

- 14 additional Front Line Staff (VOA Staff)
- Diversion/Intake Team (Current team of 10 VOA staff)
- 21 Case Managers (1:30 ratio, Washoe County Staff)
- 6 Mental Health Counselors (Washoe County Staff)
- 2 Additional Admin Staff: (Washoe County Staff)
 - Community Partnerships and Volunteers; Staff Training/Development
 - Medical Billing Specialist (implement Medicaid Reimbursement)
- 24-hour RN/EMS Support (Contracted)





Cares Campus

Progress
Catalyst
#2

Shelter Options

Providing a variety of shelter options and addressing different needs supports meeting people where they are at.

Phase I and Phase II



*Initial intake in the
congregate living bunk room.*

Phase II



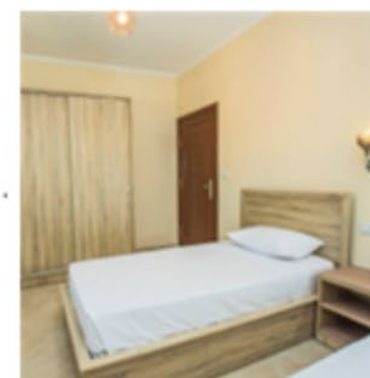
*Semiprivate living
with cubbies.*

Phase II



*Semiprivate living in a
ModPod at Safe Camp.*

Phase III



*Supportive
Housing.*



Cares Campus

Progress
Catalyst
#3

Programming & Community Partners



Agreements
In Place or in
Progress

- Anthem
- Bristlecone
- Catholic Charities of Northern Nevada
- City of Reno - Clean and Safe Team
- DETR – Department of Employment, Training, and Rehabilitation
- Dispatch Health
- Eddy House
- Food Bank of Northern Nevada
- Health Plan of Nevada/United Healthcare
- JC Lighthouse
- Karma Box Project – Street Outreach
- Liberty Dental
- Mill Street Care Center
- Mobile One Docs
- Molina
- Northern Nevada Behavioral Health
- Northern Nevada HOPES
- Reno MOST
- Reno Sparks Gospel Mission
- Silver Summit
- Veterans Administration
- Vitality Unlimited
- Washoe County Health District
- WellCare
- Downtown Reno Partnership
- My Journey Home
- Reno Behavioral Health
- Washoe County MOST

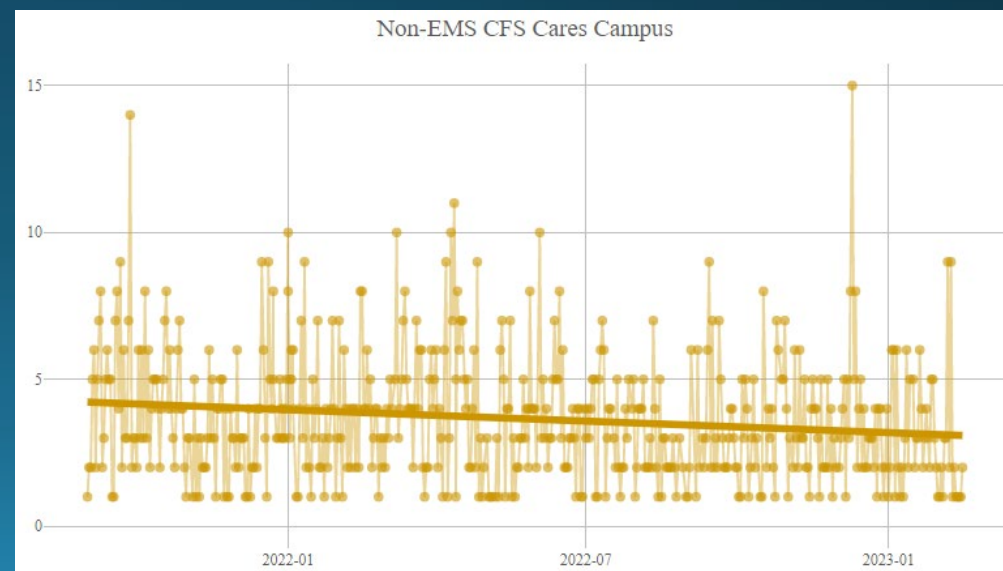


Cares Campus Outcomes - Security

- Welcome Center Open
 1. VOA check in
 - HMIS/Clarity Cards
 2. Intake/Diversion Team
 3. Security updates
 - X-Ray Bag Scanner
 - Walkthrough Metal Detector

Metal Detector =
Approx. 1,700
people per day

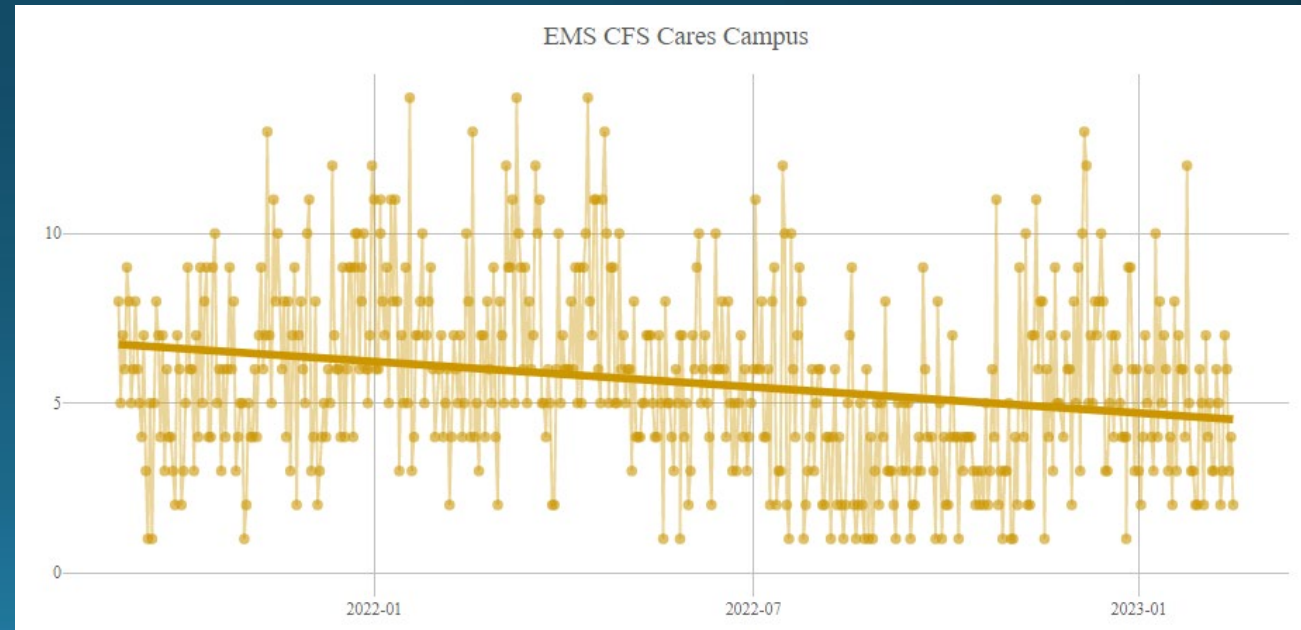
Bag Scanner =
Approx. 900
bags per day





Cares Campus Outcomes – Medical Services

- Onsite Medical Provider: MedTrust
 - Nurse and CNA 8 hours per day, 7 days per week
 - Access to a Prescriber
- Nurse Call Line through REMSA
- Medical/MCO Partners on site





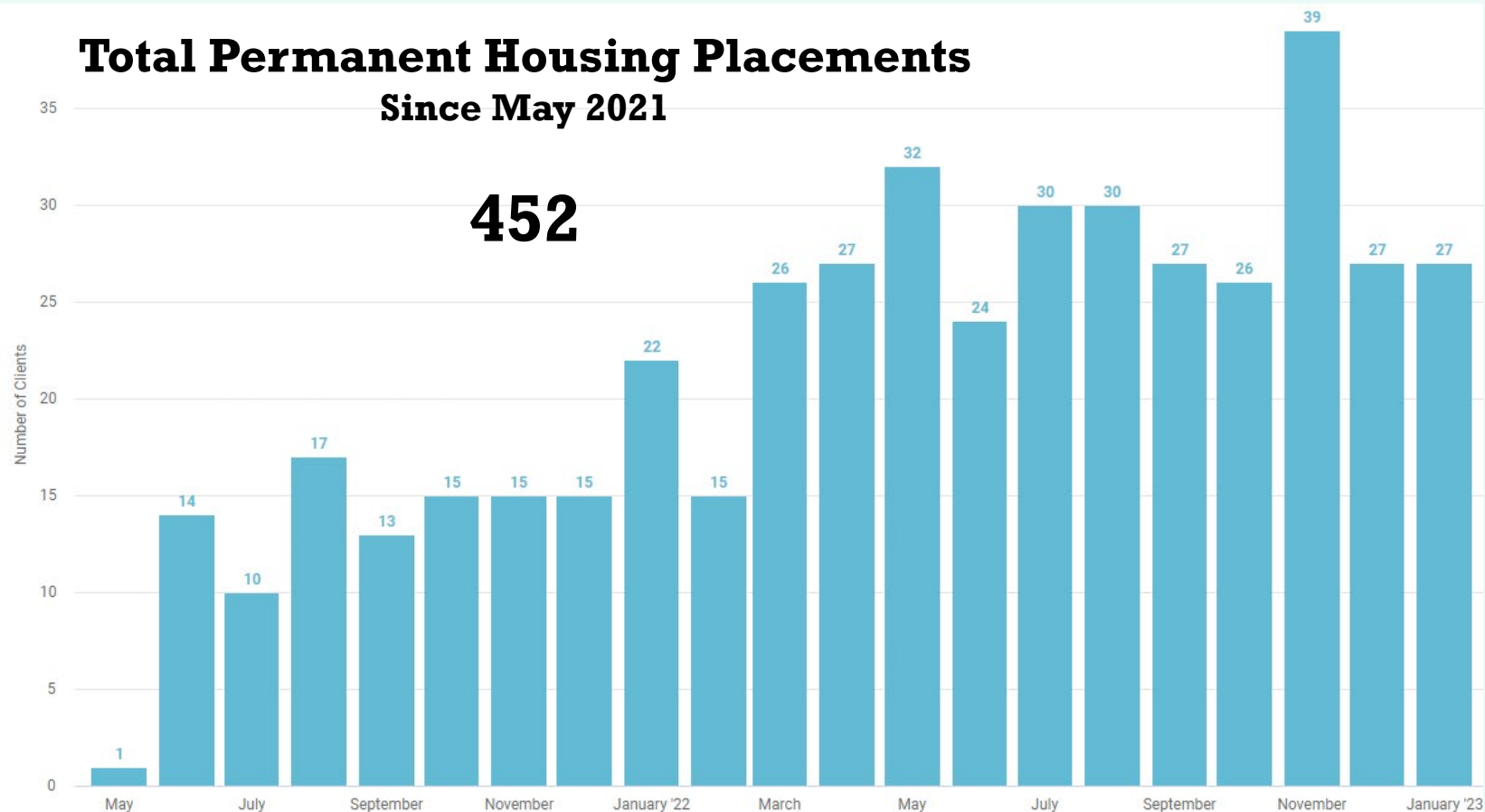
Cares Campus Outcomes—Housing Placements



Permanent
Housing
Placements

Total Permanent Housing Placements Since May 2021

452





Nevada Cares Campus Construction



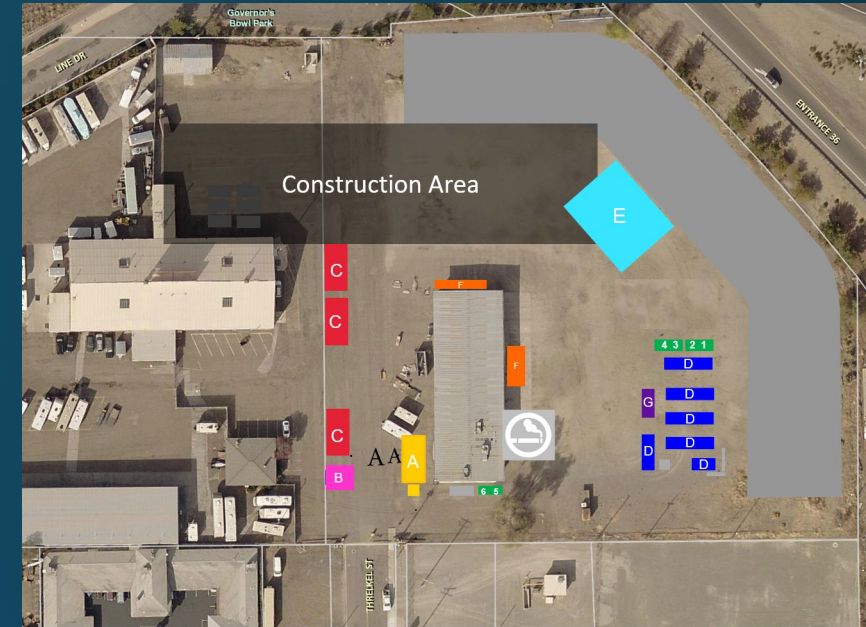
Cares Campus – Construction

➤ Temporary Buildings

- Intake Building
 - Check In, Security Check, Intake and Diversion
- Service Buildings
 - Case Managers, Behavioral Health and Partners
- Community Mail

➤ Food Tent Warming/Cooling area

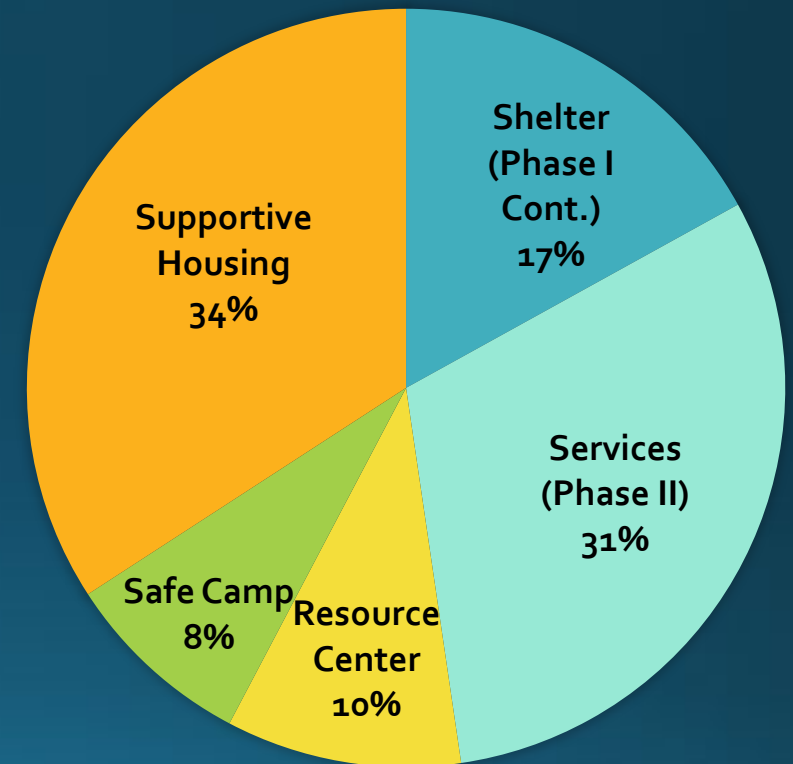
- HVAC Heating and Cooling
- Plumbed refilling drinking water station



Cares Campus Capital Budget - Oct 2022



Supportive Housing Units (50 units)	\$17,035,809
Services Building: Training, Case Management & Office Space, Intake Area, Nurse Station, Cafeteria, Warming Kitchen	\$17,043,892
Restrooms/Shower/Laundry, Sprung Improvements	\$12,148,912
Site Improvements (utilities, paving, fencing, parking, green space, pet facilities, shade)	\$6,607,326
Gov Bowl Infrastructure & Safe Camp	\$5,245,000
RHA Property Purchase	\$5,500,000
Resource Center and Maintenance Area	\$4,761,355
Design	\$4,203,439
Site Utilities	\$1,829,155
FF&E	\$1,750,000
Demo of Existing Buildings / Fuel Tank Remediation	\$1,163,348
Permitting, Sewer Connection, Water Fees and Environmental Review	\$1,090,000
Professional services	\$350,000
TOTAL Estimate	\$78,733,236



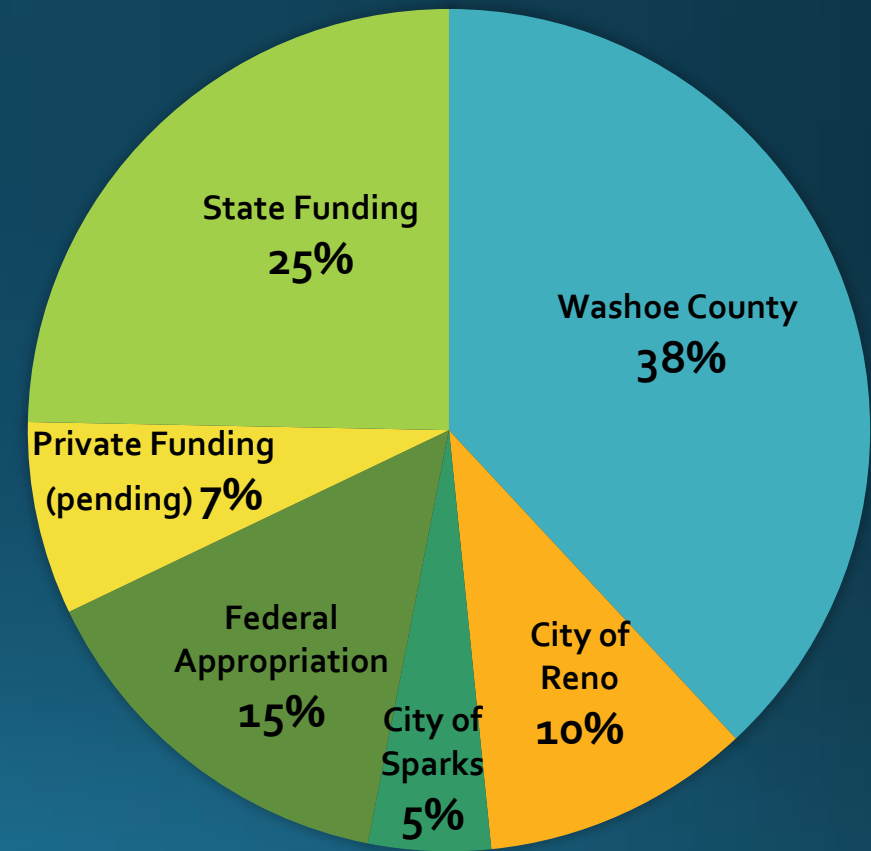
Cares Campus Capital Budget - Oct 2022



Construction Budget	
Total Budget	\$78.7 million

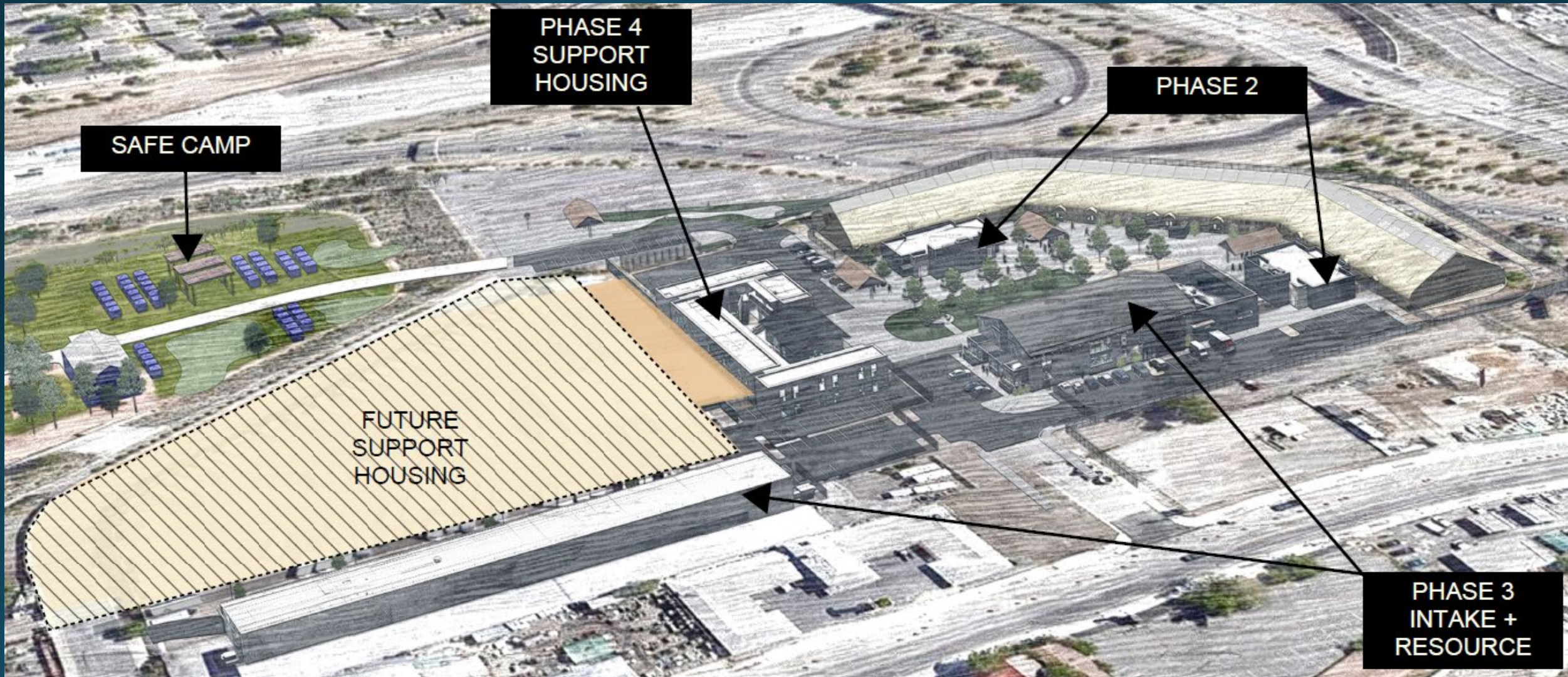
Identified Funding	
Interlocal Agreement Cost Share (pie chart)	\$38 million
Home Means Nevada Funding	\$21.9 million
RHA Property Purchase	\$5 million
Fundraising Capital Campaign	\$1.6 million
Federal Appropriation	\$12 million

Pending Funding	
*Fundraising Capital Campaign	



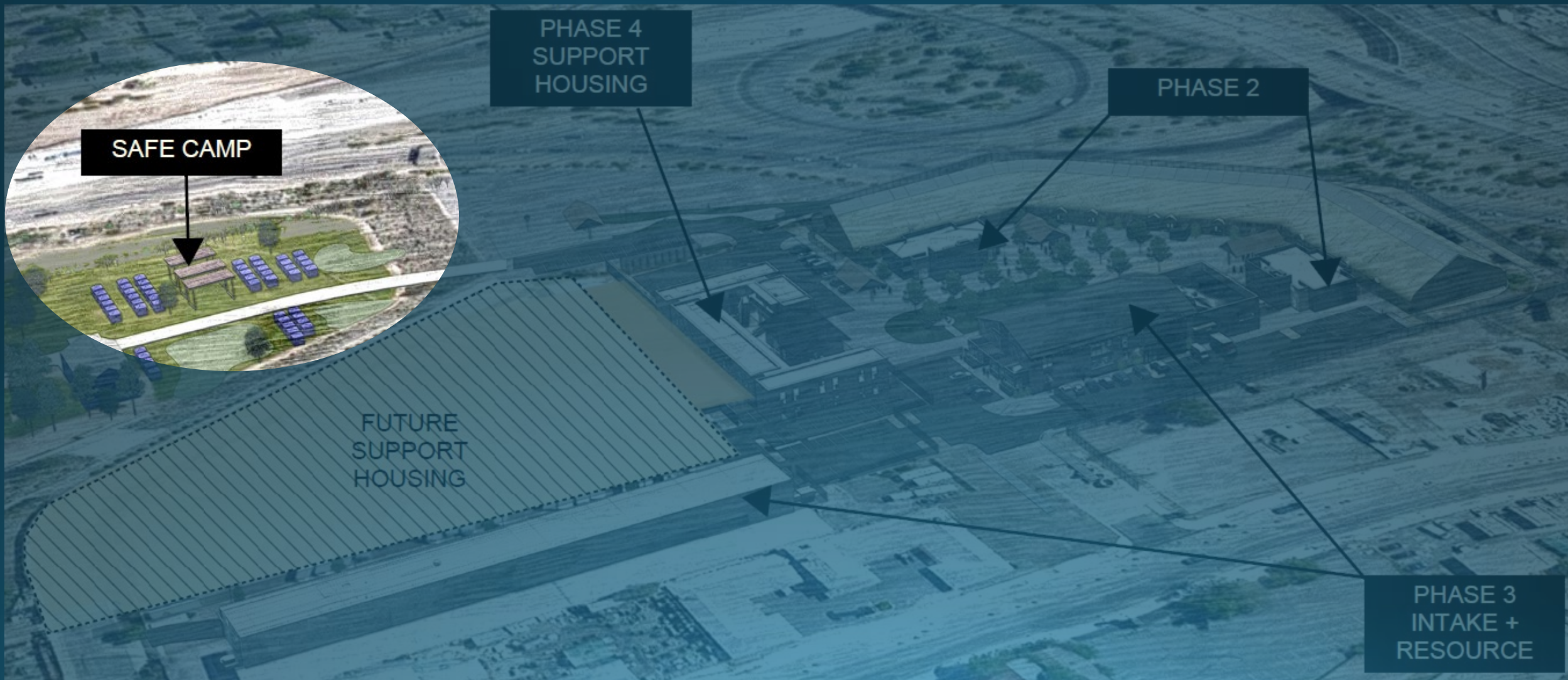


Cares Campus—Construction Update



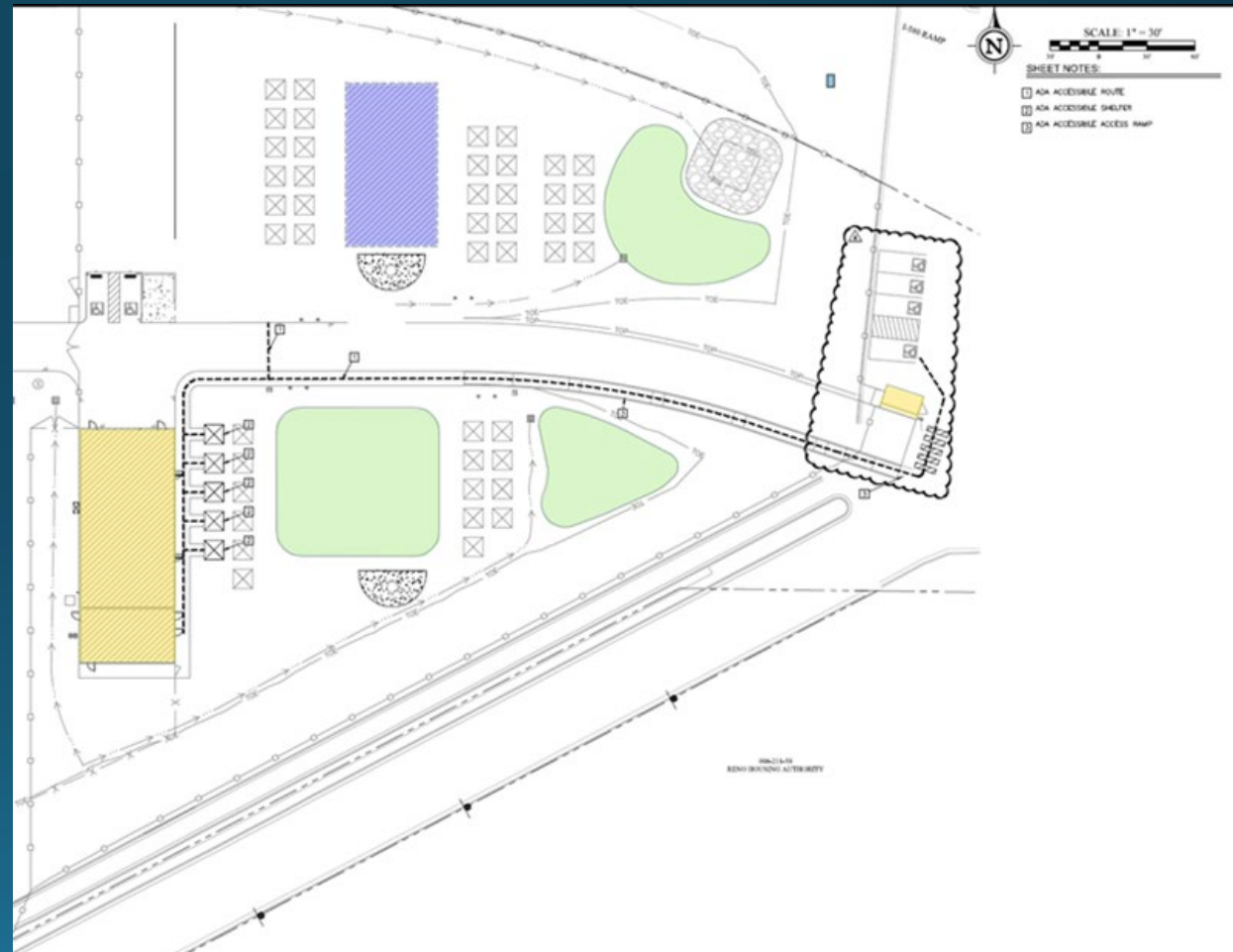


Cares Campus—Safe Camp





Cares Campus – Safe Camp





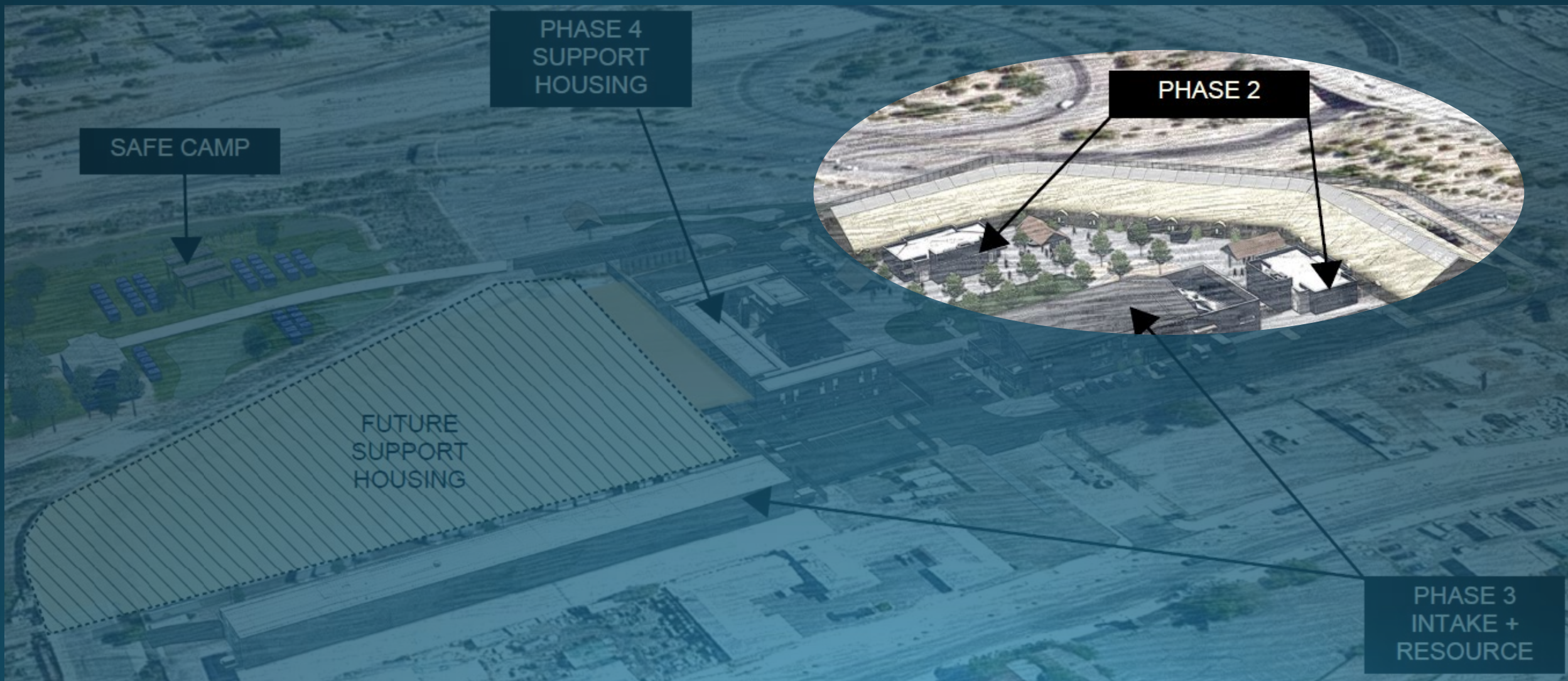
Cares Campus – Safe Camp





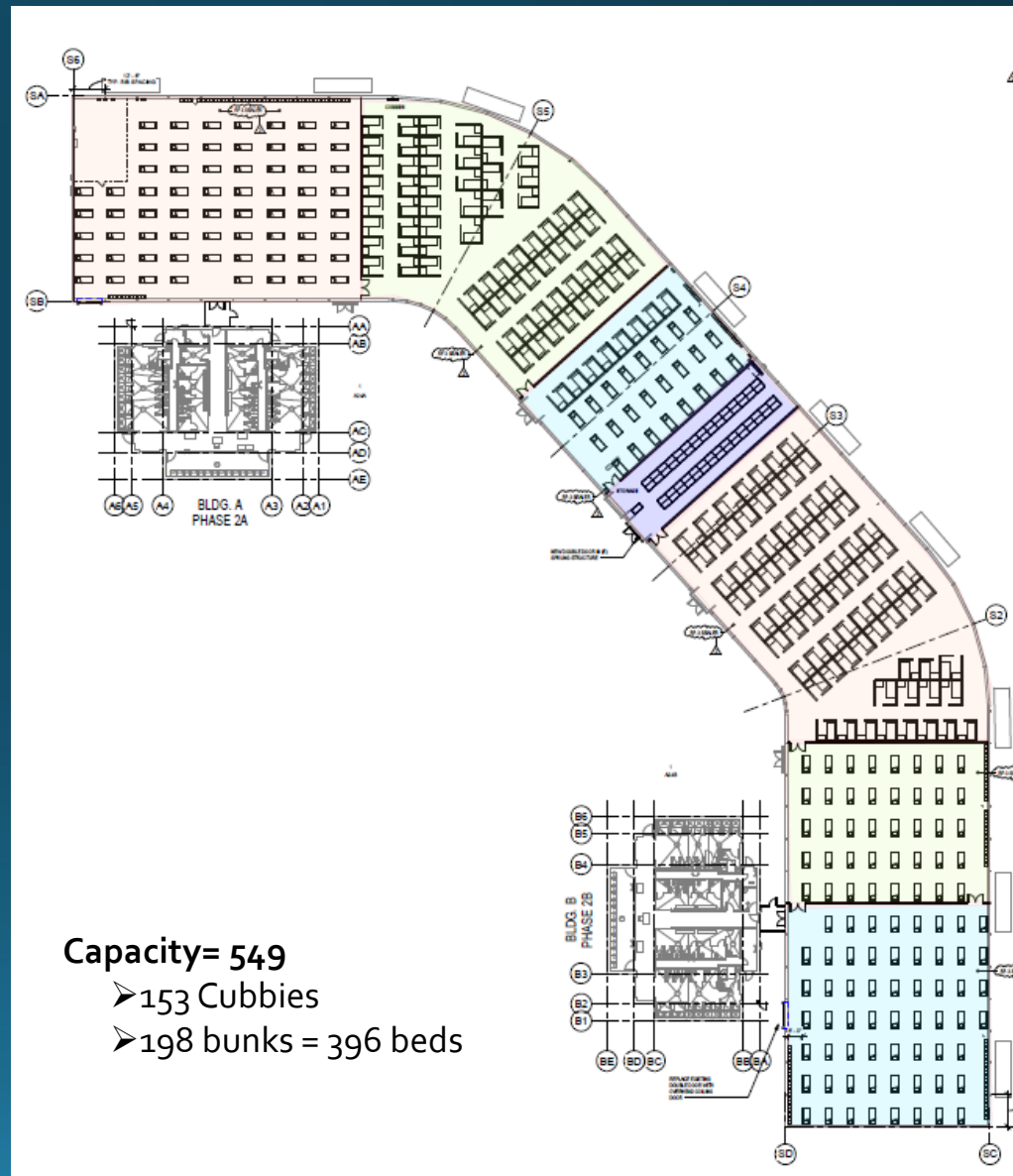
Cares Campus—Phase II

Emergency Shelter Improvements & Shower / Restroom / Laundry Buildings





Cares Campus - Sprung Updates



Capacity= 549

- 153 Cubbies
- 198 bunks = 396 beds



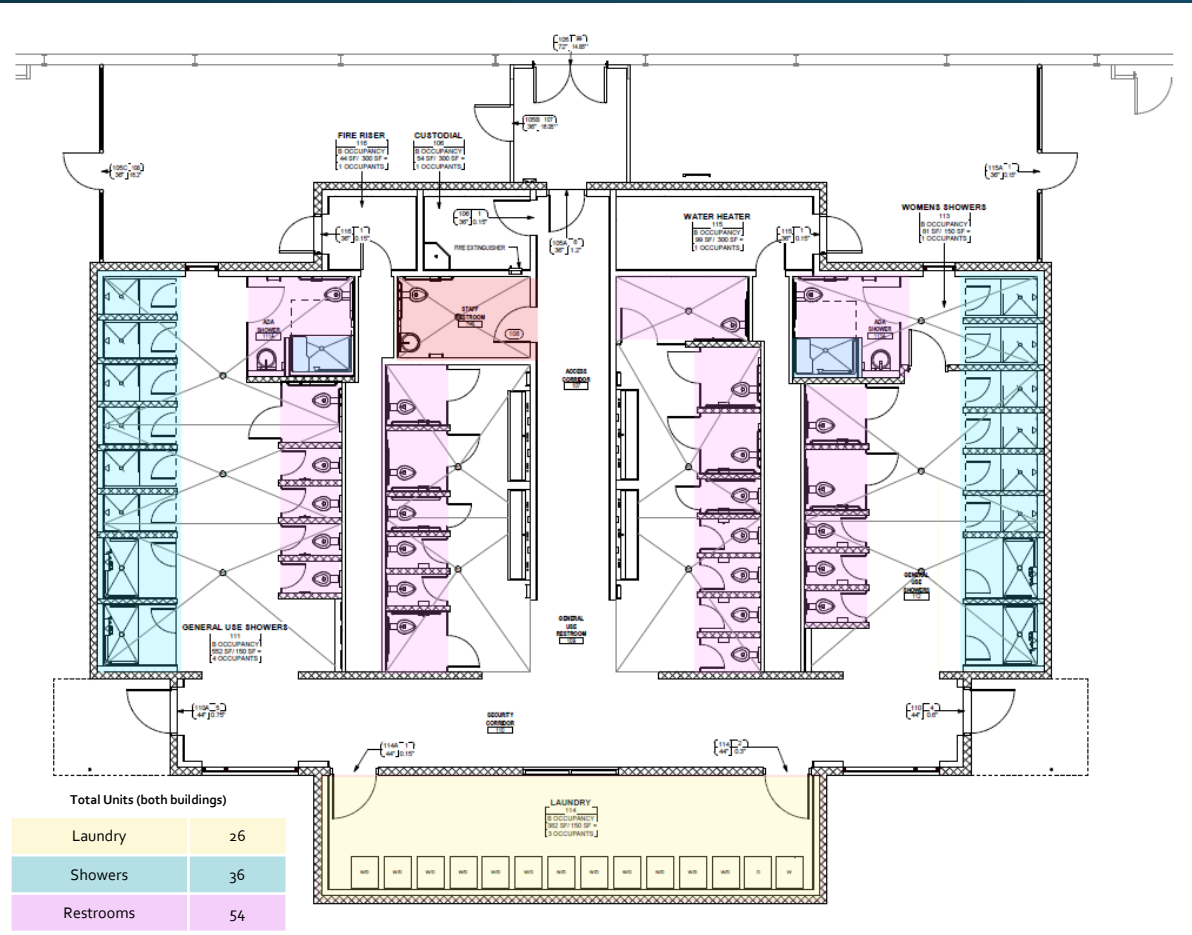
Cares Campus—Phase II

Emergency Shelter Improvements & Shower / Restroom / Laundry Buildings



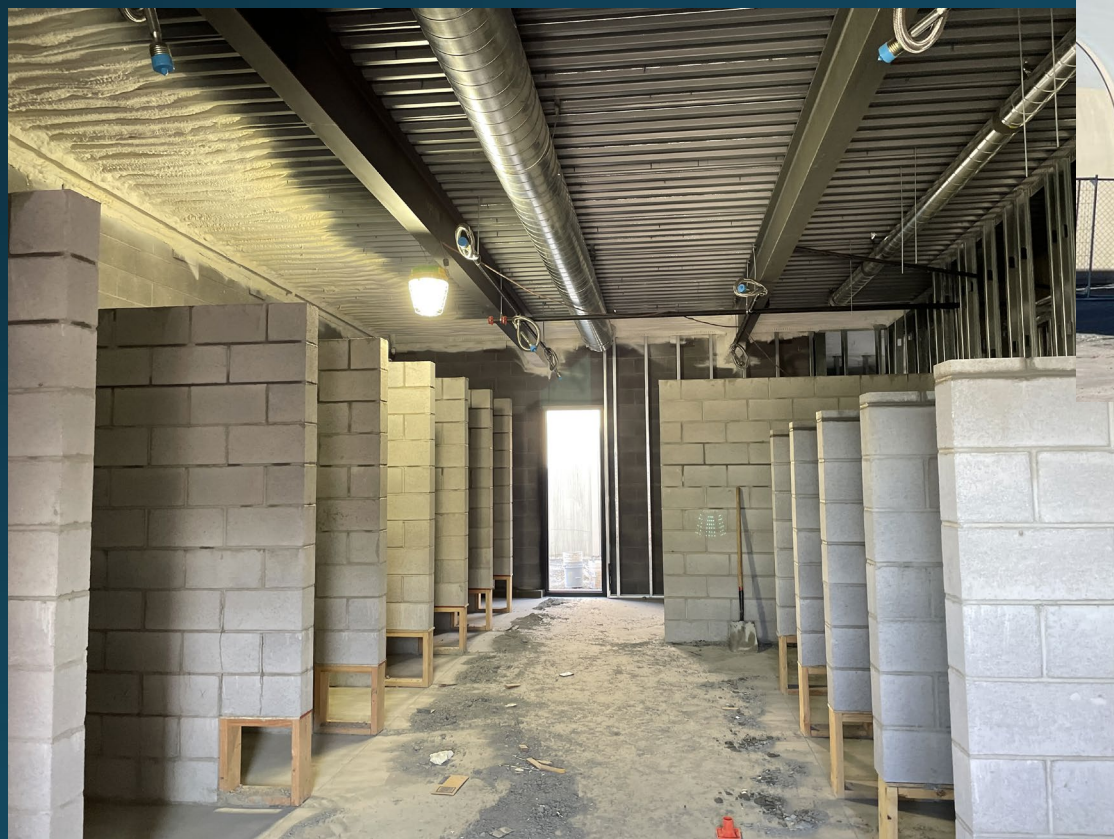


Cares Campus - Showers/Restrooms/Laundry





Cares Campus - Showers/Restrooms/Laundry





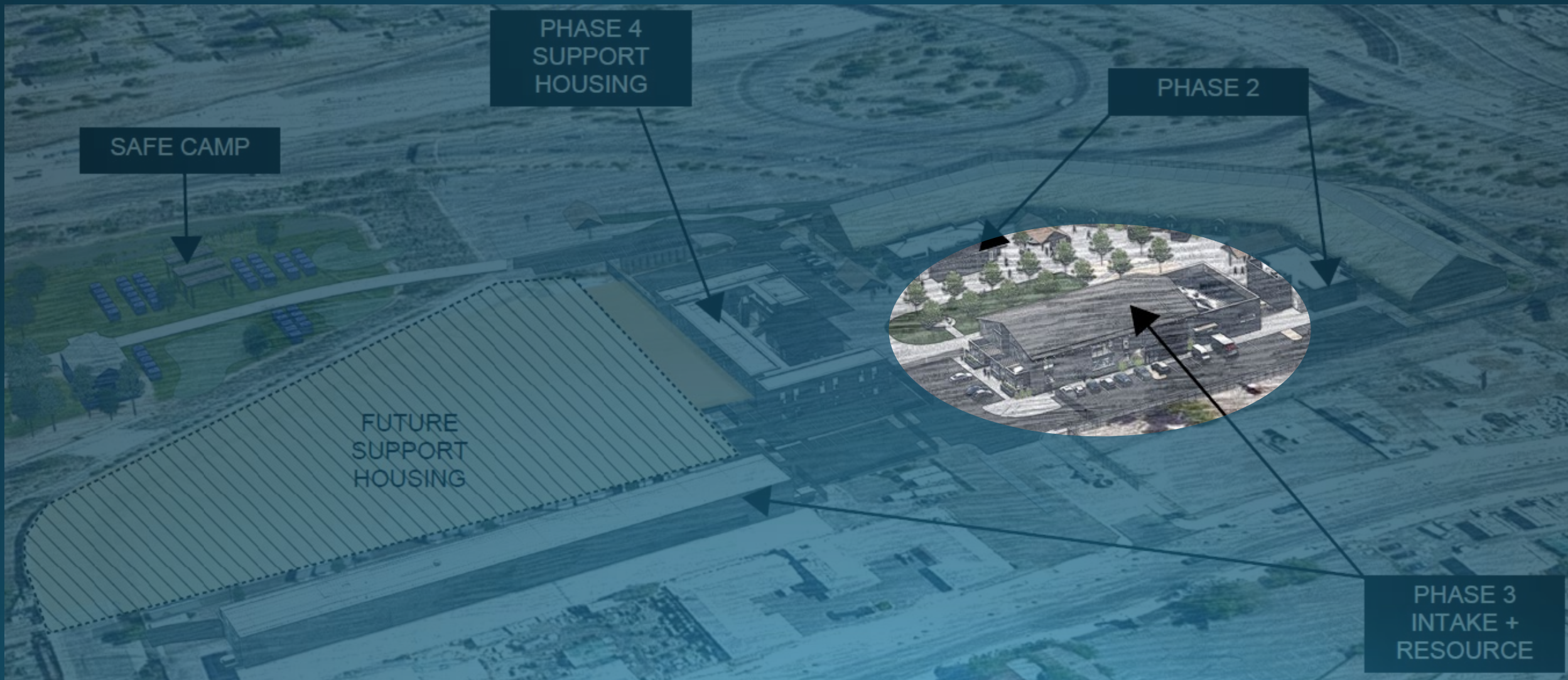
Cares Campus - Showers/Restrooms/Laundry





Cares Campus—Phase III

Welcome Center / Case Management & Therapy / Staff Offices / Dining Hall





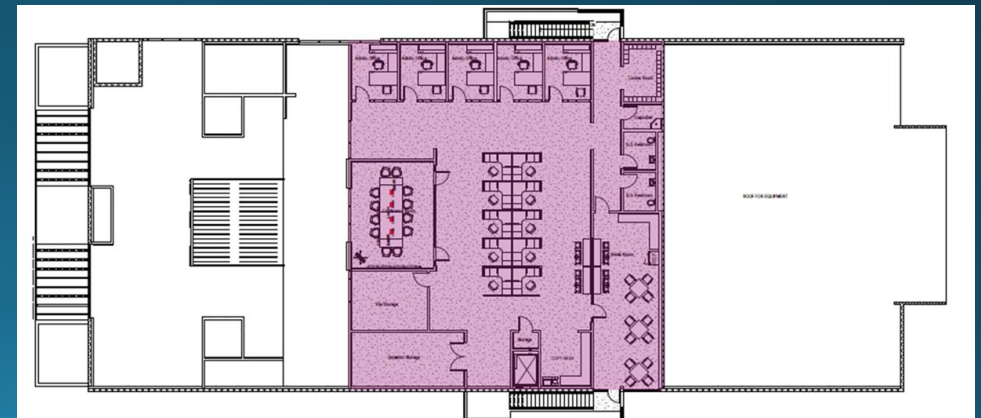
Cares Campus – Welcome Center / Case Management & Therapy / Staff Offices / Dining Hall



First Floor



Second Floor





Cares Campus Welcome Center – Diversion / Intake / Security





Cares Campus – Case Management



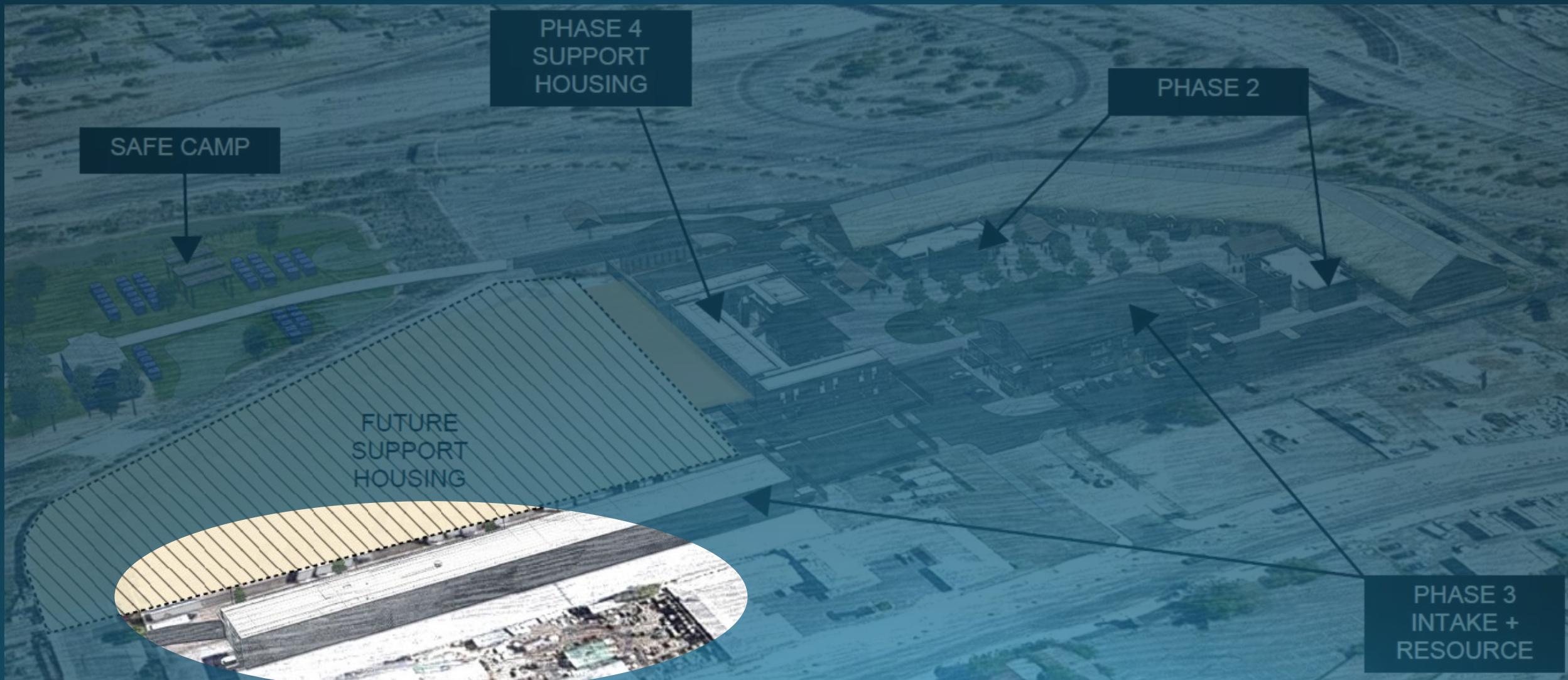
Cares Campus - Dining Hall





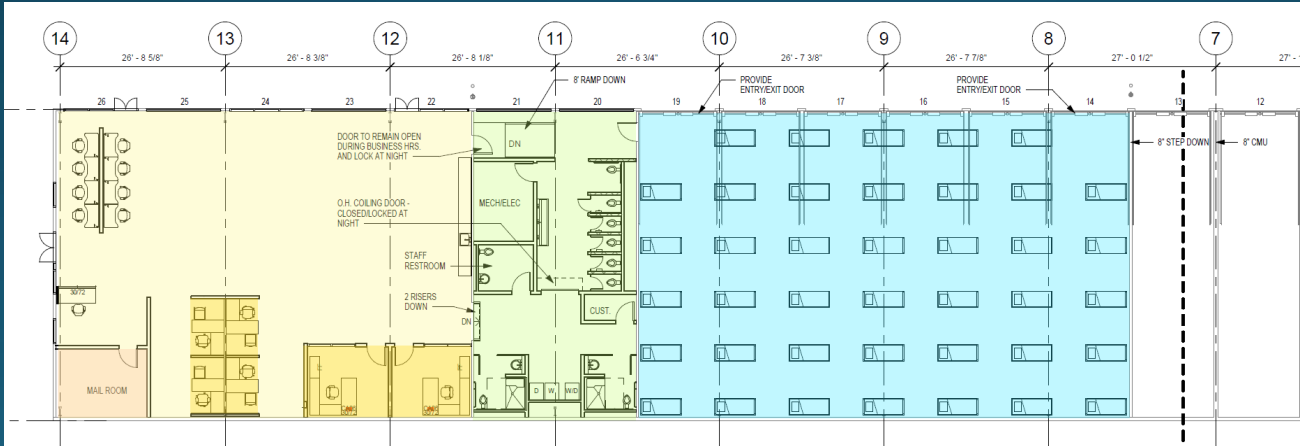
Cares Campus—Phase III

Resource Center





Cares Campus – Resource Center





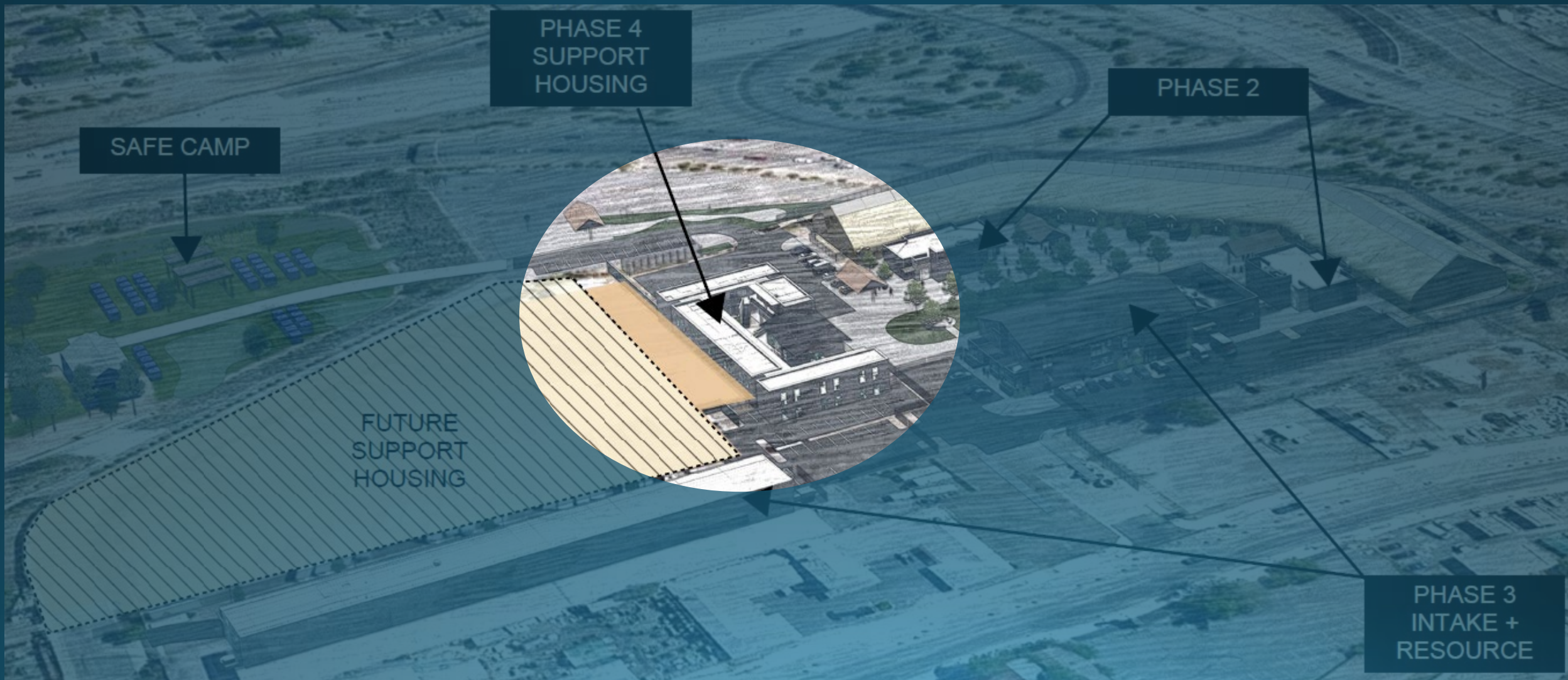
Cares Campus – Resource Center





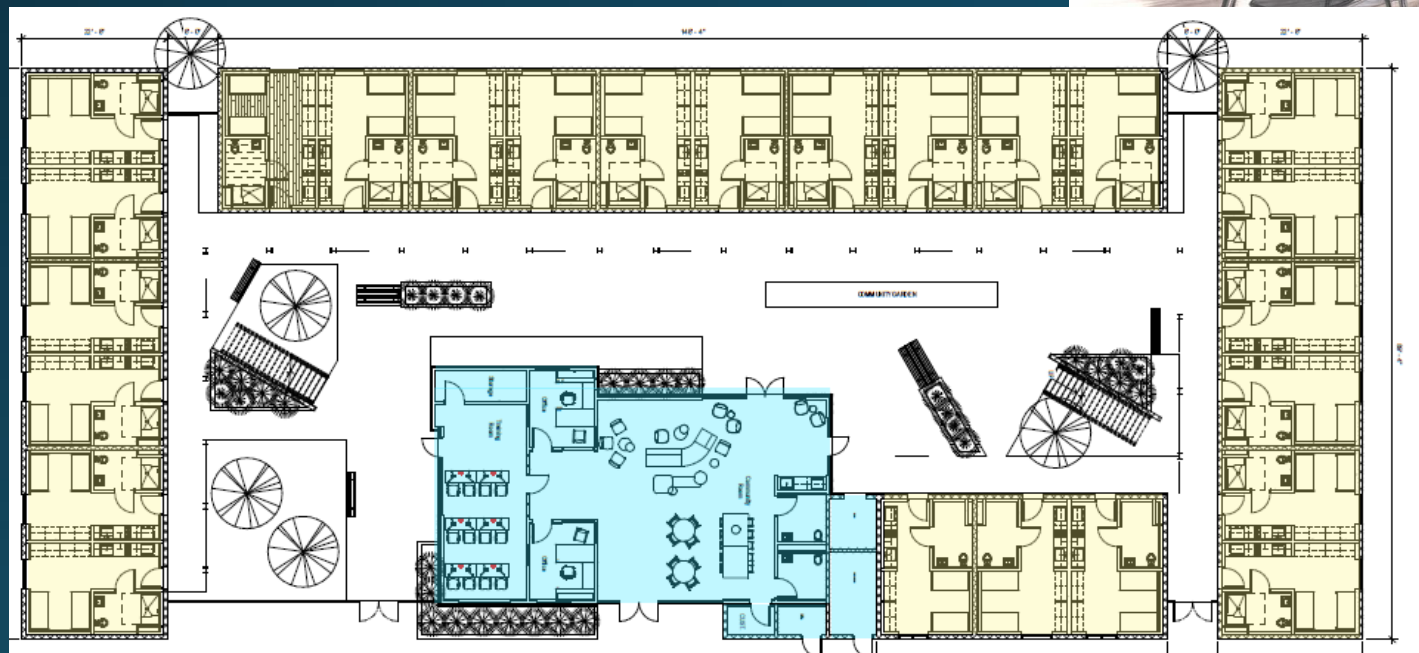
Cares Campus—Phase IV

Supportive Housing





Cares Campus – Supportive Housing



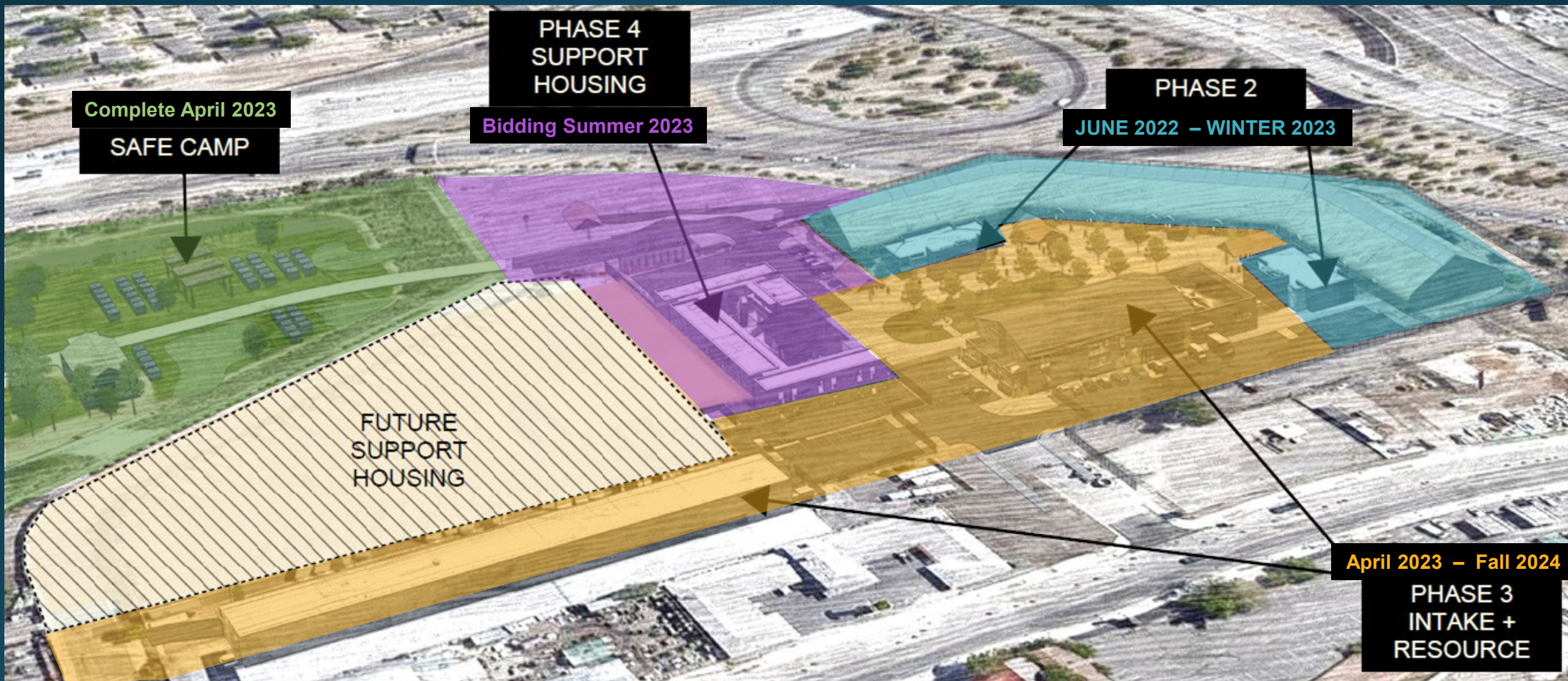


Cares Campus – Supportive Housing





Cares Campus—Construction Timeline





Cares Campus - Next Steps

Program Development

- Employment Readiness and Training
- Haircuts/Grooming
- Therapy Groups

Construction

- Restroom Building A – Opening soon
- Safe Camp – Opening April
- **March 28 – GMP#3 on agenda for County Board**





Cares Campus



Data for the Cares Campus located:
https://www.washoecounty.gov/homeless/Cares-Campus/Emergency_Shelter/cares_campus_emergency_shelter_trends.php