

CHAB 3.7.22

# Cares Campus Update





# Cares Campus Priorities



STAFFING &  
TRAINING



SAFETY &  
SECURITY



FACILITY &  
CONSTRUCTION



PARTNERSHIP  
DEVELOPMENT



# Cares Campus Updates



*"Meeting you where you are at."*  
For additional resources, scan the  
QR code or contact us:



RegionalHomelessServices@washoecounty.gov  
775.325.8211 [washoecounty.gov/homeless](https://washoecounty.gov/homeless)

## Emergency Shelters

**Transition Age Youth – 18-24 yrs. old:** Eddy House  
[775.384.1129](tel:775.384.1129) - 888 Willow Street, Reno, NV 89502

**Women:** Washoe County OUR Place Family shelter  
[775.327.7501](tel:775.327.7501) - 605 S 21st St, Sparks, NV 89431

**Men or Couples:** Washoe County Nevada Cares Campus  
[775.329.4141](tel:775.329.4141) - 1800 Threlkel St., Reno, NV, 89512 (E. 4th. St.)

---

Women's Dorm (capacity = 85)

---

Overflow Opened (currently 52 cots)

---

Campus Partnership/Volunteer Development

---

Community Resource Guide

---

Recruitment Efforts

---

ModPods

---

Temporary Shower Buildings

---

Cares Campus Operator RFP



# Cares Campus Partnerships

- Vendors/Contractors (Began Sept 1)
  - Last contract transitioned from Reno
  - Operator RFP posted – closes March 25
- Service Providers/Partners (Launched Dec)
- Volunteer Program (Launched Feb)

## **Service Providers / Partner Agreements in Place**

Health Plan of Nevada  
Molina  
Anthem  
SilverSummit  
Food Bank of Northern  
Nevada  
Veterans Administration—  
Healthcare for Homeless Vets  
Reno Housing Authority  
Bristlecone  
Eddy House  
WellCare  
Northern Nevada Behavioral  
Health  
Liberty dental



# Cares Campus - Safe Camp ModPods

- 52 Modpods have
  - 50 for Safe Camp
  - 2 for isolation at Cares Campus
- Assembly started Feb 2
- Once all assembled, participants will move back to temp location







# Cares Campus – Safe Camp ModPods



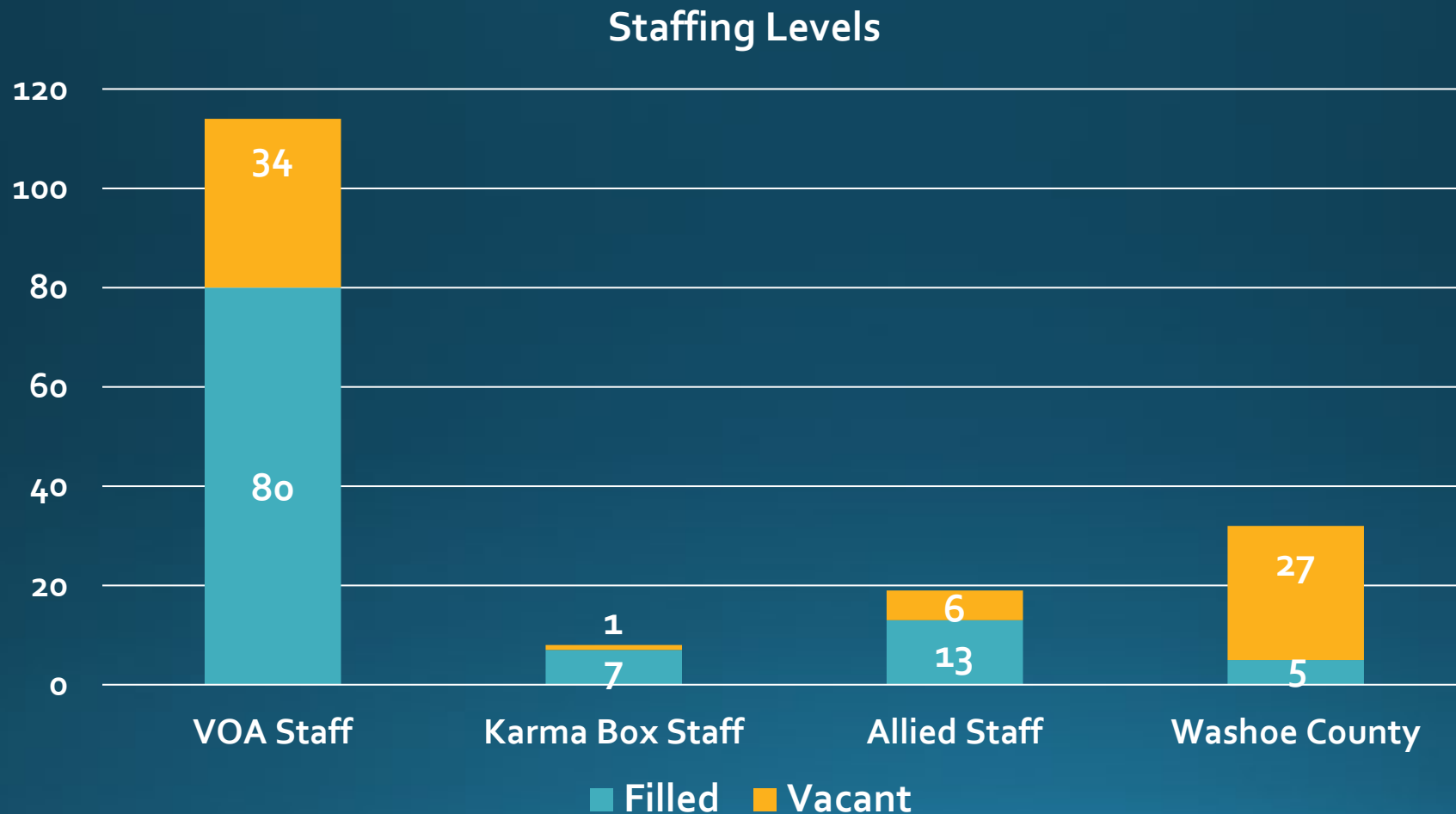


# Cares Campus—Jon DeCarmine Recommendations

Not Started	In Process		Operational
<div>Housing: Implement a strong housing focus</div> <div>Housing: Length of stay policy</div> <div>Diversion: Implement diversion at every entry</div> <div>Staffing: Overhaul case management process</div>	<div>Staffing: Four staff per 100 beds (each shift)</div> <div>Staffing: Appropriate case management caseload</div> <div>Diversion: Flexible funds for diversion</div> <div>Implement project performance measures</div>	<div>Establish Smaller Zones</div> <div>Training: Establish baseline trainings</div> <div>Training: Clarify employee expectations</div>	

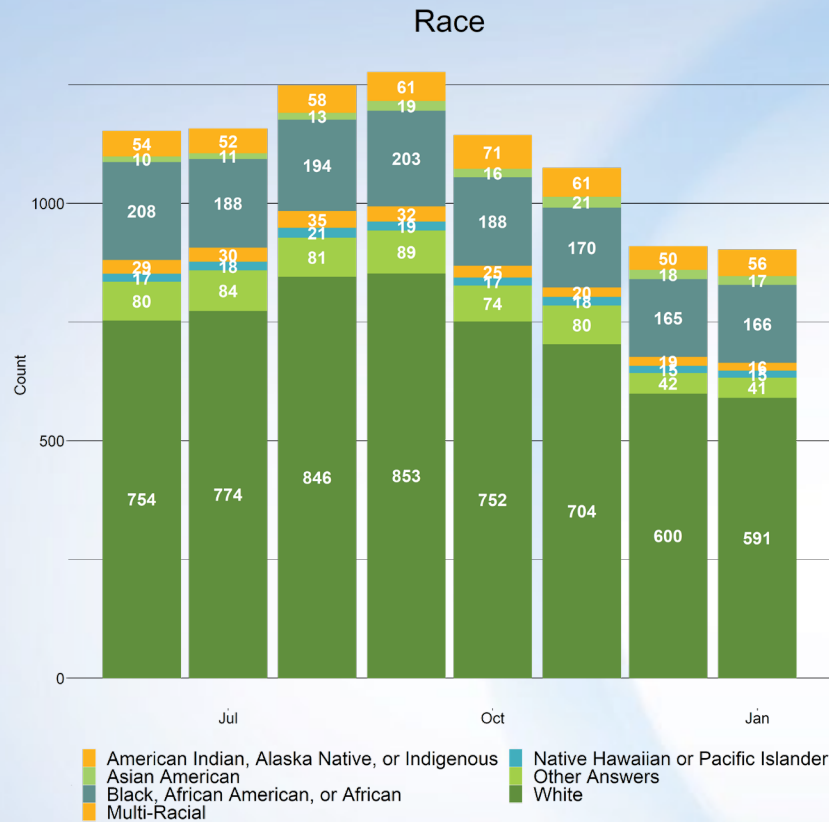


# Cares Campus—Staffing





# Cares Campus Stats

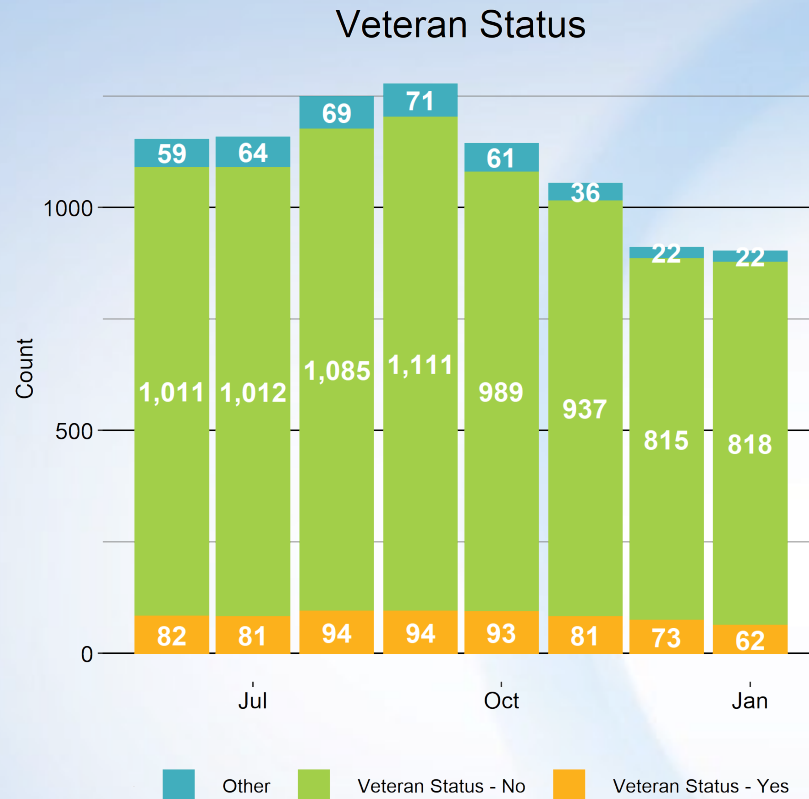


Individuals staying at Cares Campus by race. Other includes null responses, client does not know, data not collected, and client refused.

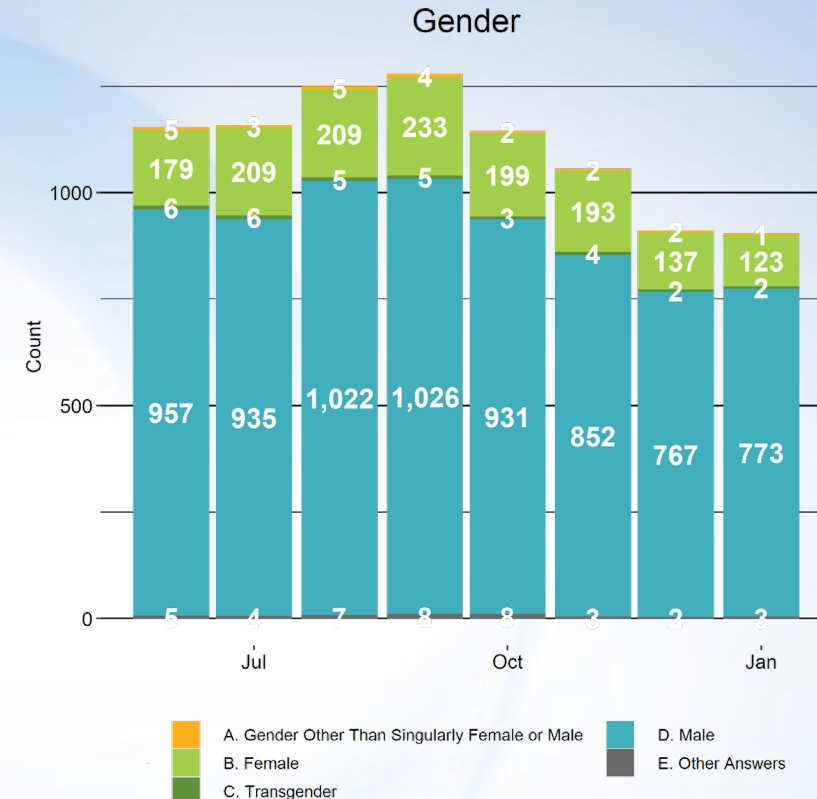


Individuals staying at Cares Campus by ethnicity.

# Cares Campus Stats



Individuals staying at Cares Campus by Veteran Status.

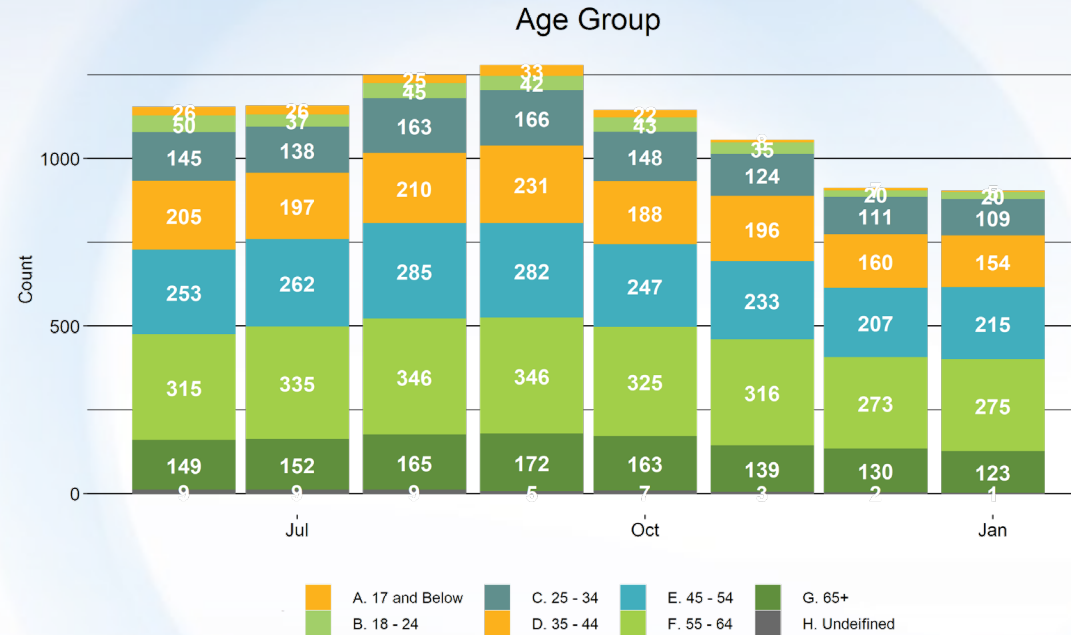


Individuals staying at Cares Campus by Gender.

# Cares Campus Stats



## Age

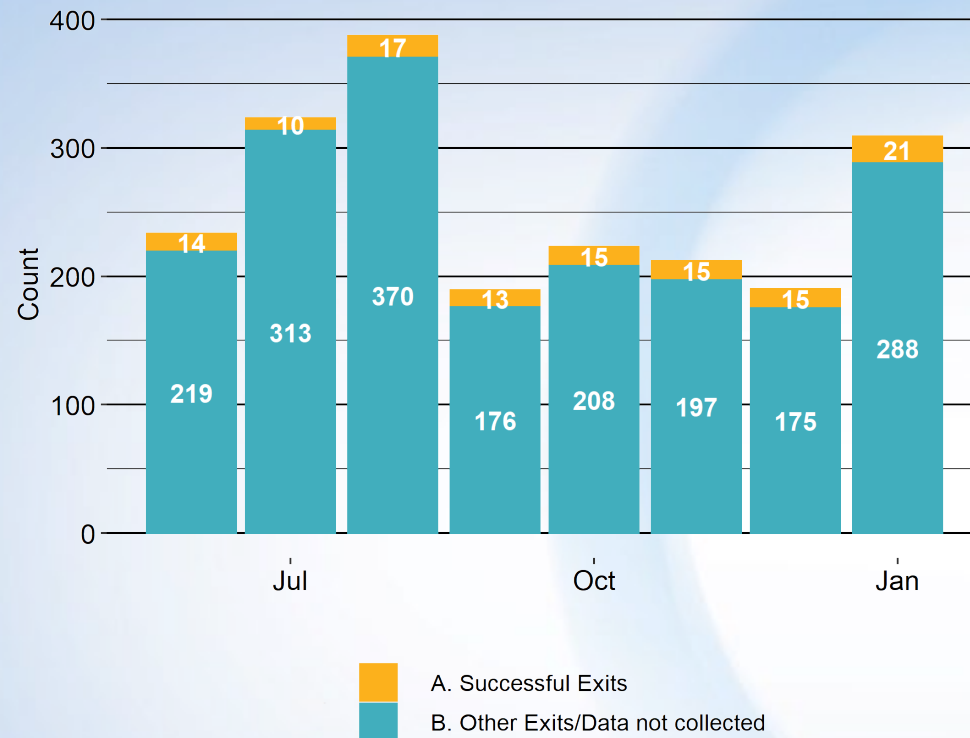


Individuals staying at Cares Campus by Age Group.

# Exits From Emergency Shelter

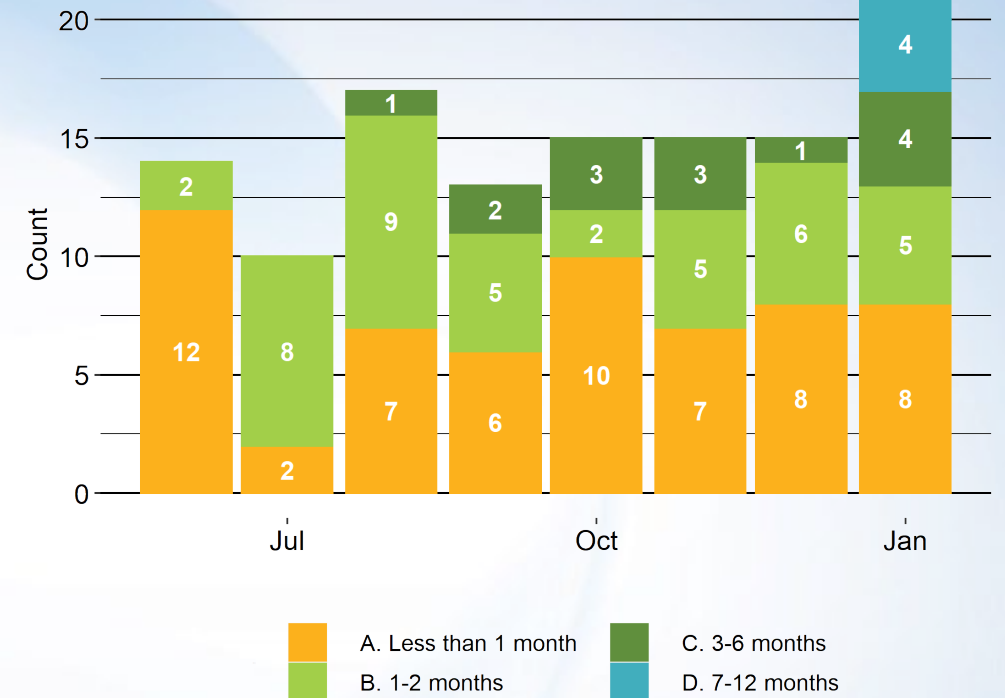


## Exits from Cares Campus



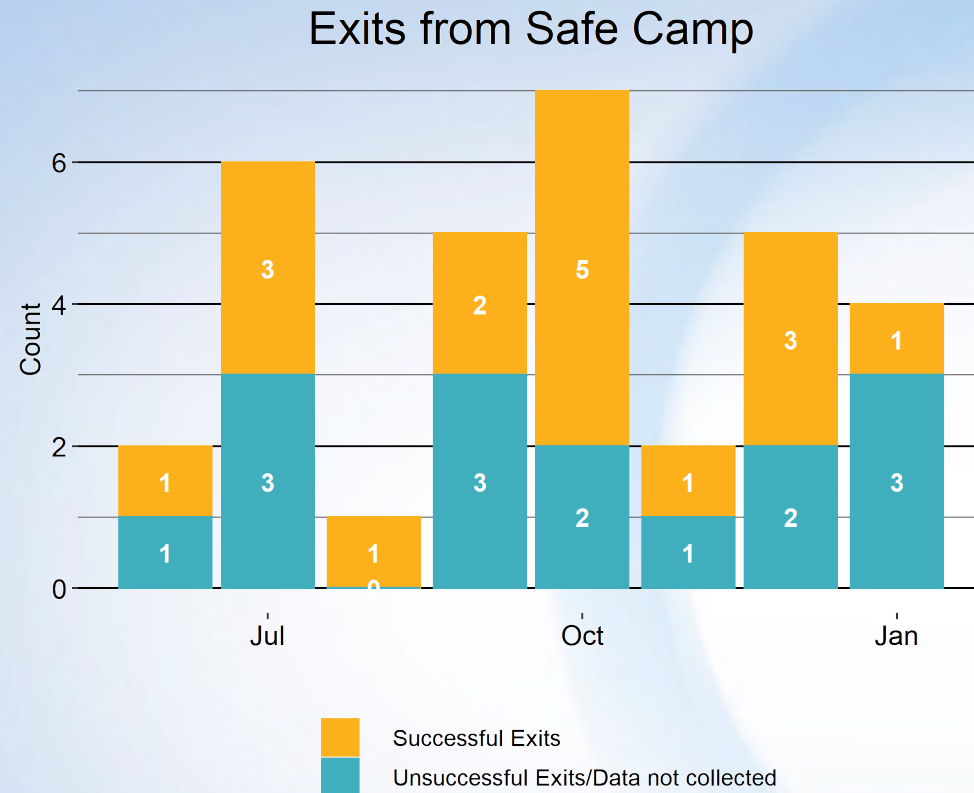
Successful exits left the Cares Campus and went into stable housing.

## Length of Stay for Successful Exits



The number of successful exits from Cares Campus and their length of stay.

# Exits From Safe Camp



Successful exits left Safe Camp and went into stable housing, while Unsuccessful Exits/Data Not Collected did not or no exit interview was done.



The number of successful exits from Safe Camp and their length of stay.



# Cares Campus: Up Next

---

Construction Preparation

---

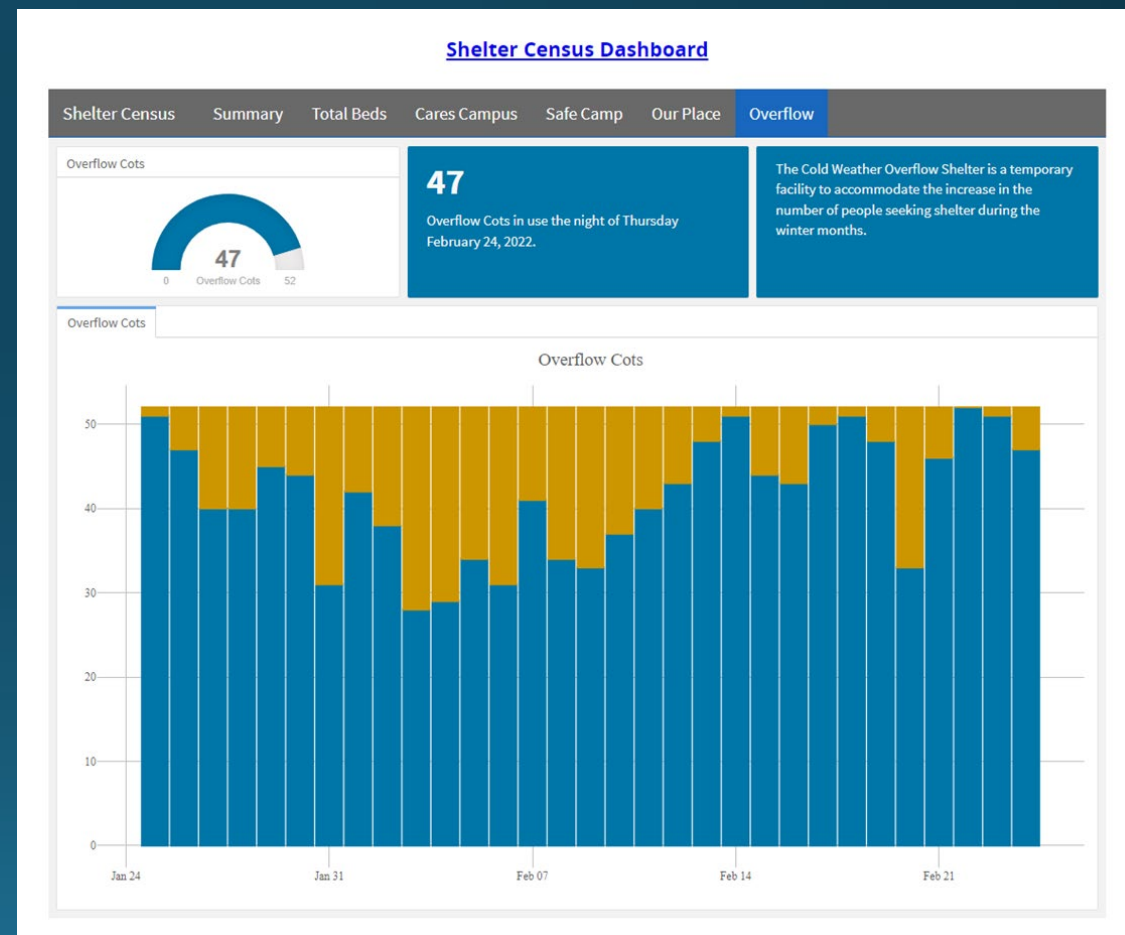
Moving the Community Mail

---

Capacity Dashboard

---

Monthly "Stat Pack"



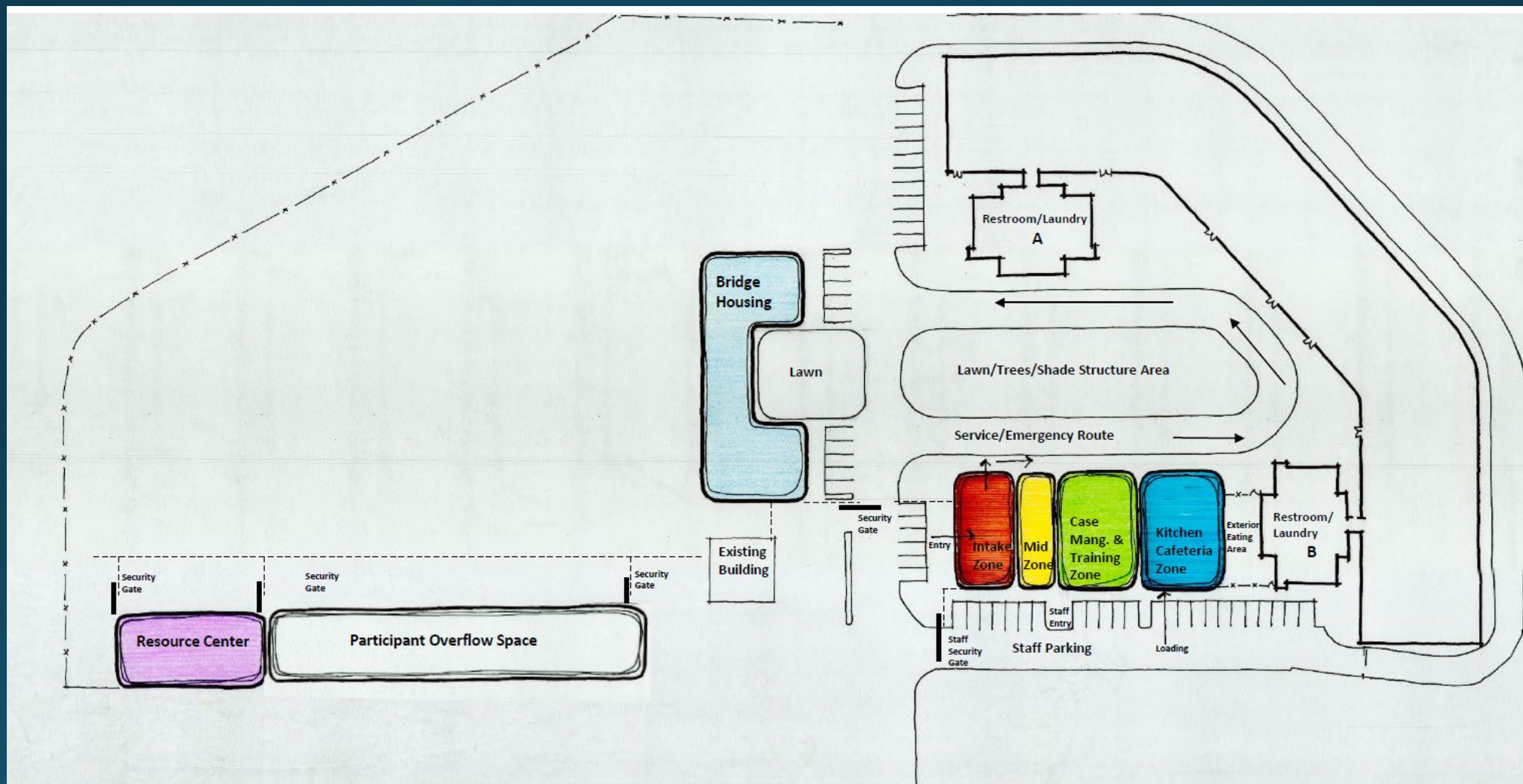




# Cares Campus Construction Update



# Cares Campus—Construction Update



Cares Master Plan Diagram Ground Level. 12.03.12





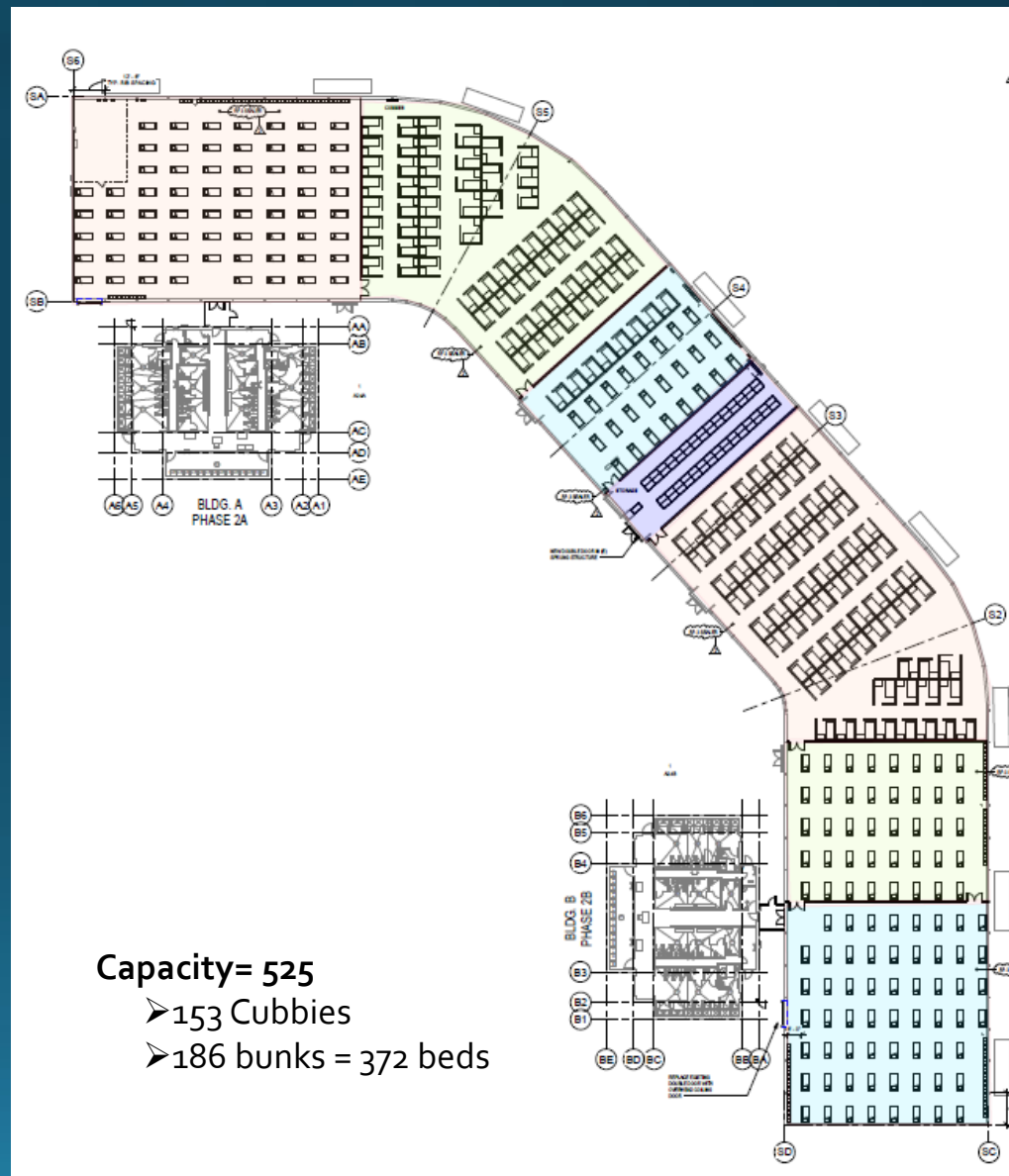
# Cares Campus—Construction Update







# Cares Campus—Sprung Updates



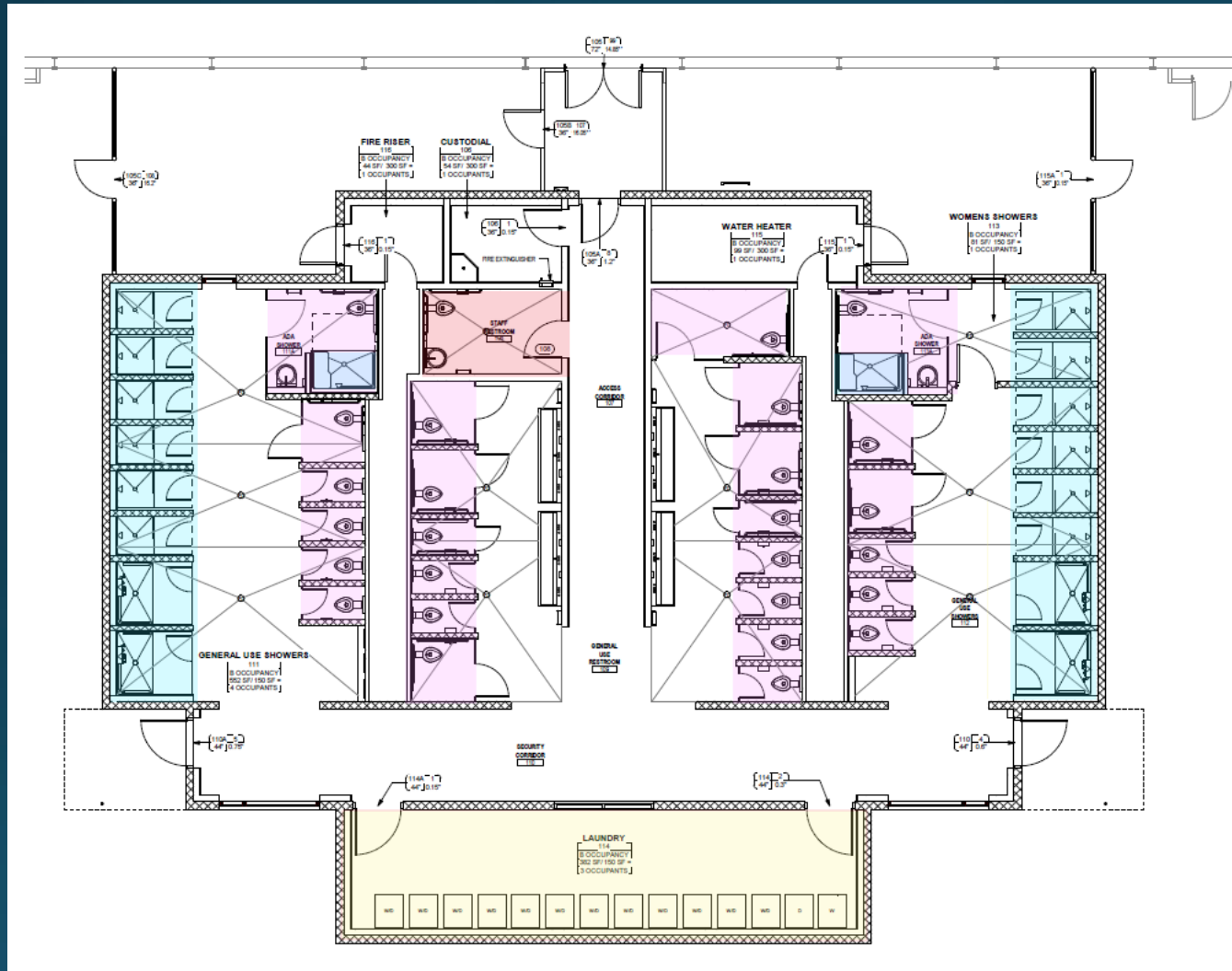


# Cares Campus—Cubbies





# Cares Campus—Showers / Restrooms / Laundry



## Total Units (both buildings)

Laundry	26
Showers	36
Restrooms	54





# Cares Campus—Showers / Restrooms





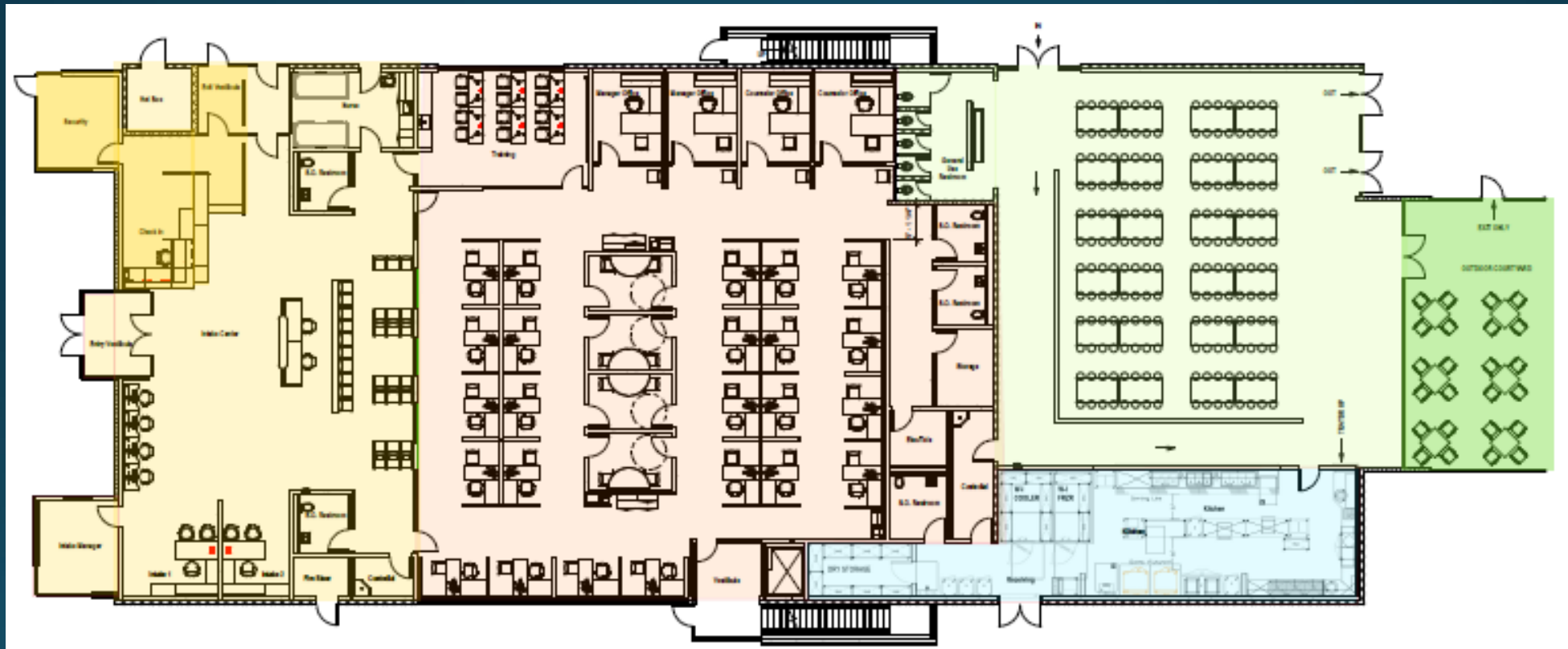
# Cares Campus—Laundry





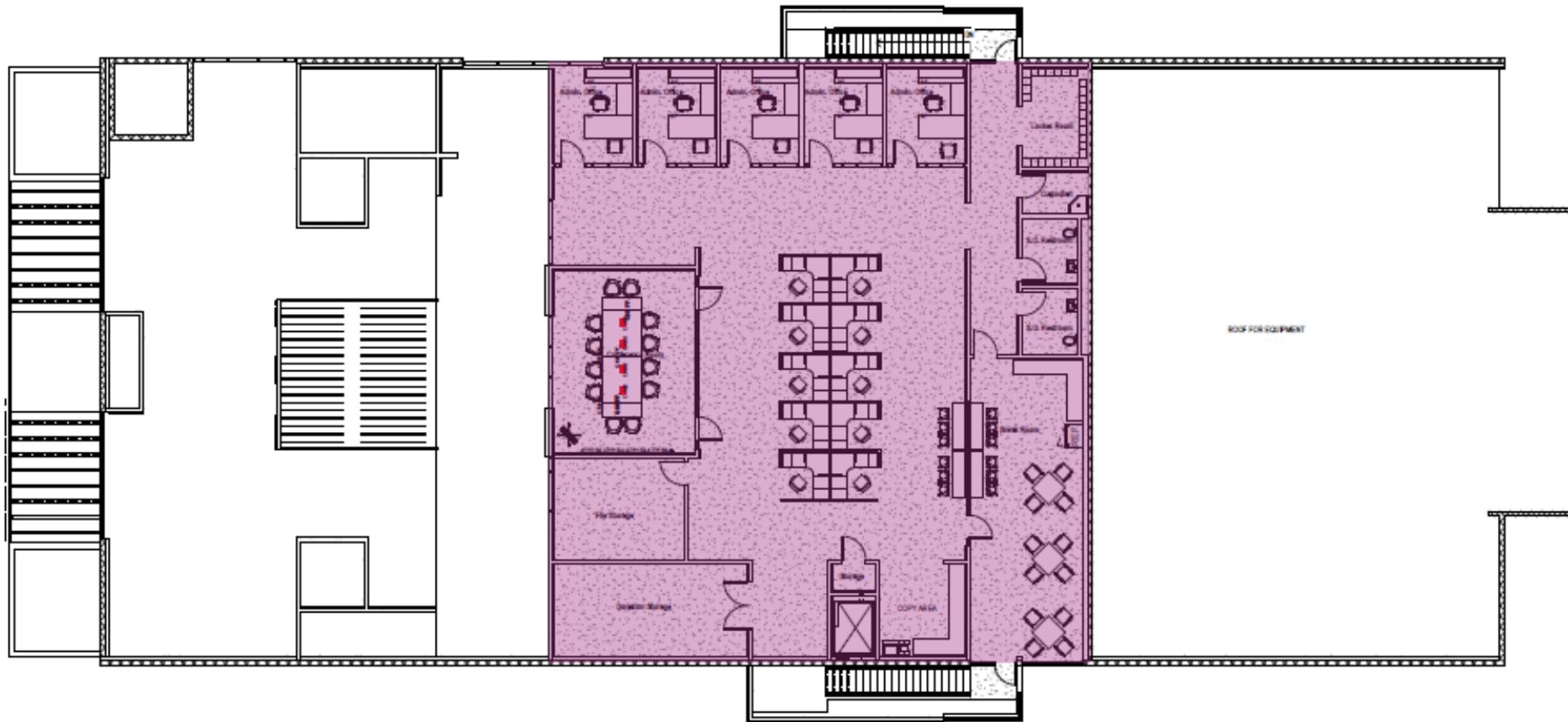


# Cares Campus—Phase III Building, Floor 1





# Cares Campus—Phase III Building, Floor 2





# Cares Campus—Dining Hall







# Cares Campus—Dining Hall







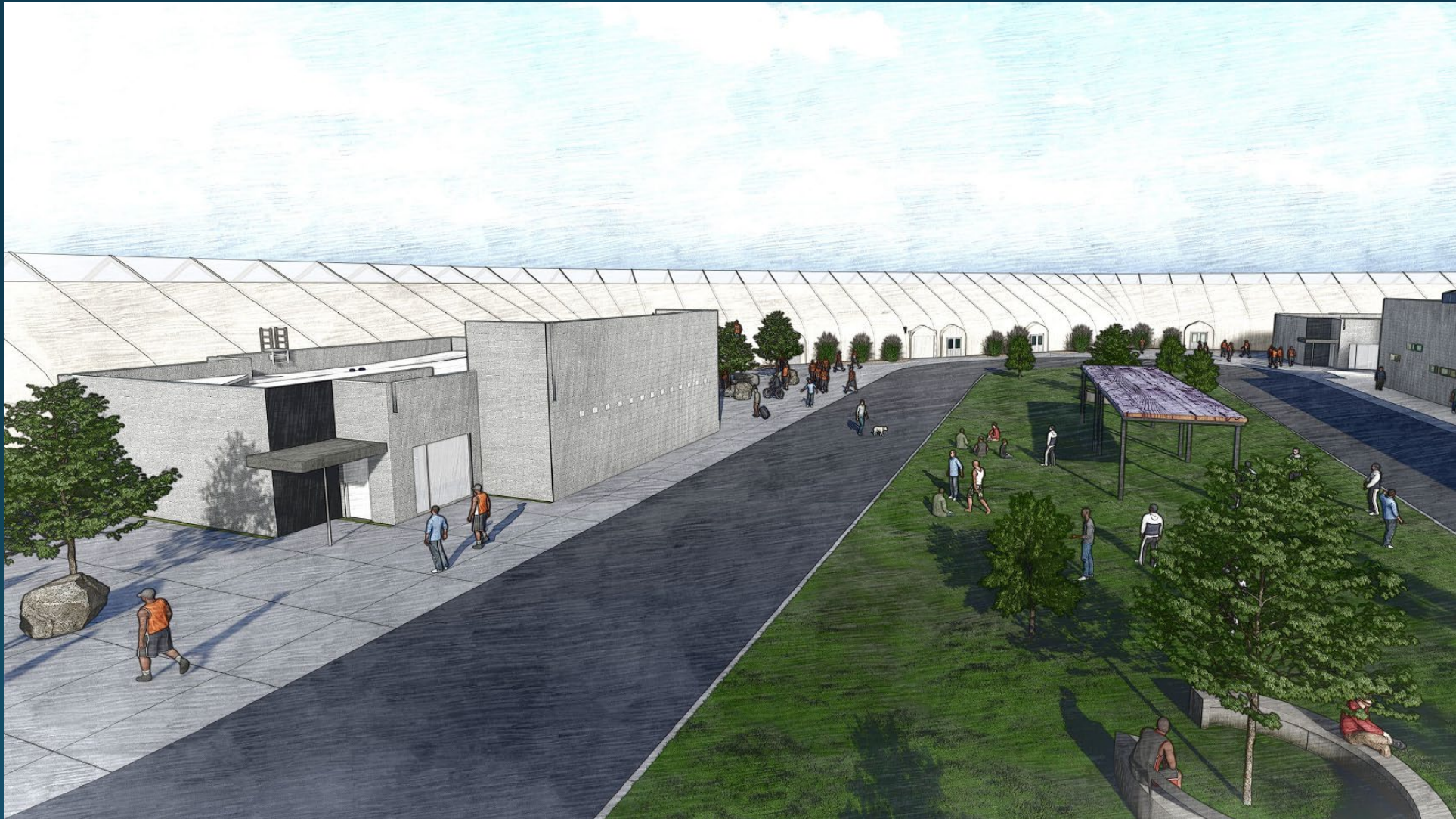
# Cares Campus—Exterior / Green Space







# Cares Campus—Exterior / Green Space





# Homeless Services Update

[www.washoecounty.gov/homelessness/](http://www.washoecounty.gov/homelessness/)