



## NEVADA CARES CAMPUS WASHOE COUNTY

Hello from the staff at Washoe County Housing and Homeless Services and Nevada Cares Campus!

We would like to welcome you and express our commitment to service all participants and staff at the Nevada Cares Campus. We are a housing-focused Campus, and it is important that the services we provide support your pursuit of housing goals. Through these monthly newsletters, updates will be provided about the current state and future changes at the Campus. These updates will include services, scheduled activities, construction and more. If there are changes taking place in the interim, these changes will be communicated through Campus staff and case managers. We look forward to staying connected.

### Campus Changes

#### MedTrust



If you need medical service on Campus, please come see the MedTrust team in the medical trailer:

Every day from 1 p.m. – 8 p.m.

The medical building is marked G in purple on the map on the next page.

#### Food Bank of Northern Nevada



The Food Bank of Northern Nevada team is seeing participants at a new location on Campus! They are here to help participants sign up for EBT benefits and recertify for benefits on:

Mondays, Tuesdays and Thursdays from 8 a.m. – 3 p.m.

Find them in the partner building, Office 5, in green on the map on the next page.

### We will meet you where you are at

When an individual arrives at the Nevada Cares Campus the length of stay is different for each participant. The goal for all is to make the stay rare and brief, but we meet everyone where they are, regardless of how long it may take a participant to enter housing. We'd like to share the following story of an individual who participated in the Nevada Cares Campus Safe Camp.

Before being admitted to the Safe Camp when it opened in June 2021, this participant had lived on the streets for over 4 years. During his stay at Safe Camp, he was employed with Karma Box Project to help with maintenance and care of the camp. His responsibilities grew and he was instrumental in helping other members of the Safe Camp and Cares communities find housing, while working on his own housing plan, as well.

After working with his Safe Camp Case Manager and the Northern Nevada Adult Mental Health (NNAMHS) Permanent Supportive Housing (PSH) program, this participant obtained housing and is settling in comfortably. He is committed to remaining successfully housed and the staff wishes this participant the best in this new chapter in life.

*This story was one of many shared by case managers. To read additional success stories please visit our website at [www.washoecounty.gov/homeless](http://www.washoecounty.gov/homeless)*

### Updated Partner Schedule

Monday	Tuesday	Wednesday	Thursday	Friday
8am – 3pm Food Bank of Northern Nevada	8am – 3pm Food Bank of Northern Nevada	9am – 12pm Mobile One Docs	8am – 3pm Food Bank of Northern Nevada	9am – 11am WellCare
9am – 12pm Mobile One Docs	9am – 12pm Mobile One Docs	10am – 2pm JC Lighthouse "The Crew"	9am – 12pm Mobile One Docs	11am – 1pm Eddy House
10am – 12pm Mill Street Care Center	9am – 12pm Anthem Outreach	12:30 pm – 3pm Silver Summit Outreach	9am – 12pm Anthem Outreach	1pm – 8pm MedTrust
11am- 1pm Molina Healthcare	9am – 11am WellCare	1pm – 3pm HPN Outreach	10am – 12pm Mill Street Care Center	
1pm – 3pm VA Outreach	10am – 2pm JC Lighthouse "The Crew"	1pm – 8 pm MedTrust	10am – 2pm JC Lighthouse "The Crew"	
1pm – 8pm MedTrust	10 am – 12pm Mill Street Care Center		1pm – 8pm MedTrust	
	3pm – 4:30pm Bristlecone Recovery Center			
	1pm- 8pm MedTrust			

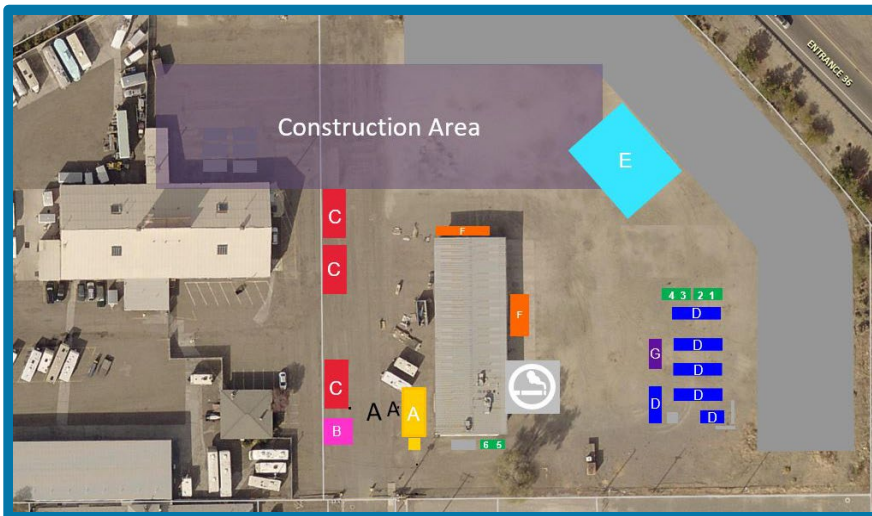
## Case Management is moving ...


"How will I see my case manager once Section A closes?" A great question! Once Section A closes for construction in the middle to end of September case managers will no longer be in Section A.

Instead, case managers will be meeting with participants in their dorms. Don't forget to check in with your case manager regularly to get updates on when the move is and look for updates in your dorm. Please note, all dorms have contact information for all case managers.

## Current ongoing construction map

During construction, sections of the Campus will continue to be closed or relocated to new temporary buildings that will assist in continuing to provide services. The current temporary buildings include:



- A** The Welcome Center, Security, and Intake, located at the entrance of Campus
- B** Mail located across the Welcome Center
- C** Case Management
- D** Bathrooms, showers, and laundry
- 1-6** Behavioral Health and Partner Services Offices
- E** Meals, day use area and cooling area
- F** Property Storage
- G** Medical
-  Smoking Area

We appreciate your patience as we work to improve the Campus!

Stay connected at [www.washoecounty.gov/homeless](http://www.washoecounty.gov/homeless)

## Enhanced Safety Measures on Campus

After hearing the concerns of participants on Campus, we are happy to announce the arrival of our upgraded screening tools.

In the Welcome Center you will now find a metal detector and x-ray machine.

We appreciate the feedback from participants and will continue our pursuit to advance the Campus.

## Did you know?

### Meet Shelley at the Intake Center

Shelley joined the Volunteers of America team in early 2021 as a case manager and is thrilled for her new opportunity as the Diversion and Intake Supervisor.

This role will allow her to continue working and contributing to the participant's success. Please feel free to say hi!

### We would like to hear from you!

We encourage all participants to submit topics or questions you would like to know about in the next newsletter.

Please share any comments in the blue suggestion boxes located in each dorm or at Safe Camp.