

NEVADA CARES CAMPUS WASHOE COUNTY

Hello, from the staff at Washoe County Housing and Homeless Services and Nevada Cares Campus!

We would like to welcome you and express our commitment to service all participants and staff. We are a housing-focused Campus, and it is important the services we provide support your pursuit of housing goals. Through these monthly newsletters, updates will be provided about the current state and future changes at the Campus, as well as scheduled activities, construction and more! If additional changes take place, these will be communicated through Campus staff and case managers. We will stay connected!

Join the new Wellness Groups on Campus!



Dialectical Behavior Therapy (DBT) Skills Group

Every Friday
10:00am-11:00am

Wellness Groups

Every Monday, Thursday, Friday, and
Sunday (except holidays)
10:00am-11:00am

Mindfulness Through Music

Every Tuesday
5:00pm-6:00pm

Questions?

Ask a Mental Health Counselor
or stop by our office, 8:00am-
6:00pm seven days a week!

We will meet you where you are at

After being hospitalized for one month and working towards housing as hard as he could, we had a participant who also had the opportunity to reconnect with his son *after 15 years of no contact*.

When the participant first sat down with their case manager the participant was motivated and ready to get back to work. Within a week he had two jobs, had all of his documents and knew exactly what he needed to do to obtain housing. After a few weeks in the emergency shelter, he was able to get in touch with his son and after several conversations and with the Cares Campus staff, his son agreed to have the participant come to Pennsylvania to live with him and meet his two-year-old granddaughter.

The participant stated he would not have been able to reconnect with his son after all these years if he did not have Cares Campus and the support from both VOA and Washoe County Staff. This participant is grateful he has reconnected with his son and that he is now part of his granddaughters' life. The staff expresses a warm congratulations to the participant and his family.

To read additional success stories please visit www.washoecounty.gov/homeless

Schedule of Partners on Campus

Monday	Tuesday	Wednesday	Thursday	Friday
8am - 4:30pm MedTrust	8am - 3pm Food Bank of Northern Nevada	8am - 4:30pm MedTrust	8am - 3pm Food Bank of Northern Nevada	8am - 4:30pm MedTrust
9am - 11am WellCare Health	8am - 4:30pm MedTrust	9am - 12pm Mobile One Docs	8am - 4:30pm MedTrust	9am - 11am WellCare Health
9am - 12pm Mobile One Docs	9am - 11am WellCare Health	10am - 11am Vitality	9am - 11am WellCare Health	
10am - 12pm Mill Street Care Center	9am - 12pm Anthem Outreach	12:30pm - 3pm Silver Summit Outreach	9am - 11:30am Reno Housing Authority	
11am - 1pm Molina Healthcare	9am - 12pm Mobile One Docs	1pm - 3pm HPN Outreach	9am - 12pm Mobile One Docs	
1pm - 3pm VA Outreach	10am - 12pm Mill Street Care Center	1pm - 2pm Donation van Catholic Charities of Northern Nevada	9am - 12pm Anthem Outreach	
6pm - 7pm Alcoholics Anonymous Group	3pm - 4:30pm Bristlecone Recovery Center	1pm - 3pm DETR		

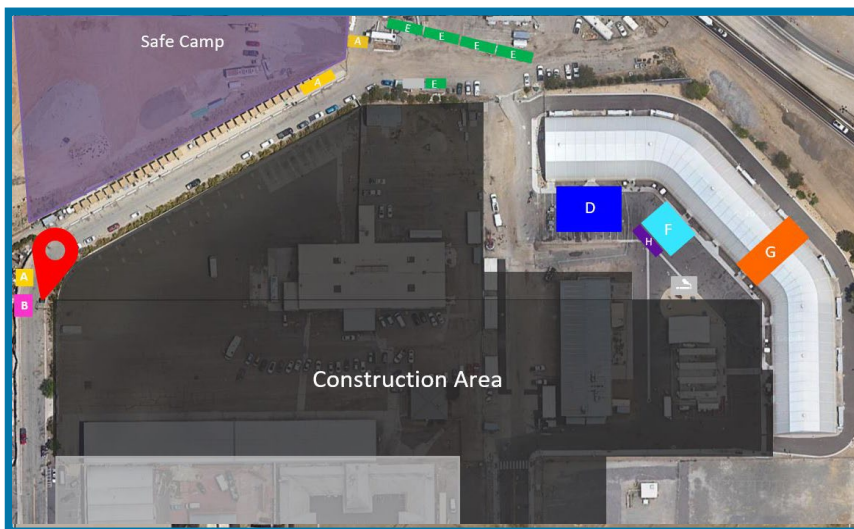
Construction Update







Construction during July and August include the continuing construction of the Resource Center and the construction of D dorm.

Thank you for your patience and understanding. Find the *temporary* Campus map and entrance below.

Temporary Construction Map

Sections of the Campus will continue to be closed or relocated to new temporary buildings during construction. The current temporary buildings include:



-  Entrance of Campus
-  The Welcome Center, Security, and Intake
-  Mail located at the Entrance of Campus
-  Bathrooms, showers, and laundry
-  Case Management, Behavioral Health, and Partner Services
-  Meals, day use area and cooling area
-  Property Storage
-  Medical
-  Smoking Area

We appreciate your patience as we work to improve the Campus!

In mid-August the new cubbies are opening in the D Dorm

In addition to single beds and bunk beds, these cubby units will prepare participants to live independently and learn how to manage an individual space.

Questions?

Connect with your case manager to see if you meet the criteria for a cubby.

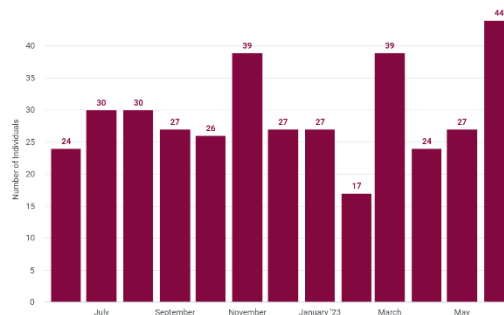
Did you know?

Record number of exits to permanent housing!

Individuals moved into permanent housing during June =

44

Cares Campus Monthly Exits



The Cares Campus team will continue to meet you where you are at.