



NEVADA CARES CAMPUS WASHOE COUNTY

Hello, from the staff at Washoe County Housing and Homeless Services and Nevada Cares Campus! We would like to welcome you and express our commitment to service all participants and staff. We are a housing-focused Campus, and it is important the services we provide support your pursuit of housing goals. Through these monthly newsletters, updates will be provided about the current state and future changes at the Campus, as well as scheduled activities, construction and more! If additional changes take place, these will be communicated through Campus staff and case managers. We'll stay connected!

With all the changes taking place, we want to say, Thank You.

We would like to thank all participants and staff for your ongoing patience through construction in the sprung and the surrounding area.

Construction has progressed and the new entrance on Line Dr. has opened.

Please see the new Campus map and the location of the temporary buildings on the back of this newsletter.

If you have questions or concerns throughout these changes, please connect with Campus staff.

We will meet you where you are at

The Cares Campus staff is dedicated and focused on tackling all types of homelessness. As chronic homelessness is common among our participants, the team is excited to share the following participant exit! A participant had been experiencing homelessness on and off in the community since 2015. Throughout his experience he faced barriers such as money mismanagement, mental health barriers, and he couldn't keep a steady job. Additionally, he struggled with keeping an apartment and finding stable income. When the Cares Campus opened in May 2021, this individual was one of the first participants, but was reluctant to work with Campus staff and case managers.

After a while of being at the Campus he was finally ready to better his life. He was tired of being homeless and was ready to find something else. He began working with his case manager to renew his driver's license which led to finding a job. His housing goal was to get into Village on Sage St and once he applied, he was approved and moved in within a week. This participant has been able to keep the same job and is enjoying this housing stability. The Campus staff and case managers were dedicated and are happy this participant decided to end 8 years of chronic homelessness.

To read additional success stories please visit www.washoecounty.gov/homeless

NEW Partner Schedule

Monday	Tuesday	Wednesday	Thursday	Friday
8am - 3pm Food Bank of Northern Nevada	8am - 3pm Food Bank of Northern Nevada	8am - 4:30pm MedTrust	8am - 3pm Food Bank of Northern Nevada	8am - 4:30pm MedTrust
8am - 4:30pm MedTrust	8am - 4:30pm MedTrust	9am - 12pm Mobile One Docs	8am - 4:30pm MedTrust	9am - 11am WellCare
9am - 11am WellCare	9am - 12pm Mobile One Docs	10am - 11am Vitality	9am - 11am WellCare	
9am - 12pm Mobile One Docs	9am - 12pm Anthem Outreach	10am - 2pm JC Lighthouse "The Crew"	9am - 11:30am Reno Housing Authority	
10am - 12pm Mill Street Care Center	9am - 11am WellCare	12:30pm - 3pm Silver Summit Outreach	9am - 12pm Mobile One Docs	
11am - 1pm Molina Healthcare	10am - 2pm JC Lighthouse "The Crew"	1pm - 3pm HPN Outreach	9am - 12pm Anthem Outreach	
1pm - 3pm VA Outreach	10am - 12pm Mill Street Care Center	1pm - 2pm Donation van Catholic Charities of Northern Nevada	10am - 12pm Mill Street Care Center	
6pm - 7pm Alcoholics Anonymous	3pm - 4:30pm Bristlecone Recovery Center		10am - 2pm JC Lighthouse "The Crew"	

Connect with Cares

APRIL 2023



HOUSING & HOMELESS SERVICES

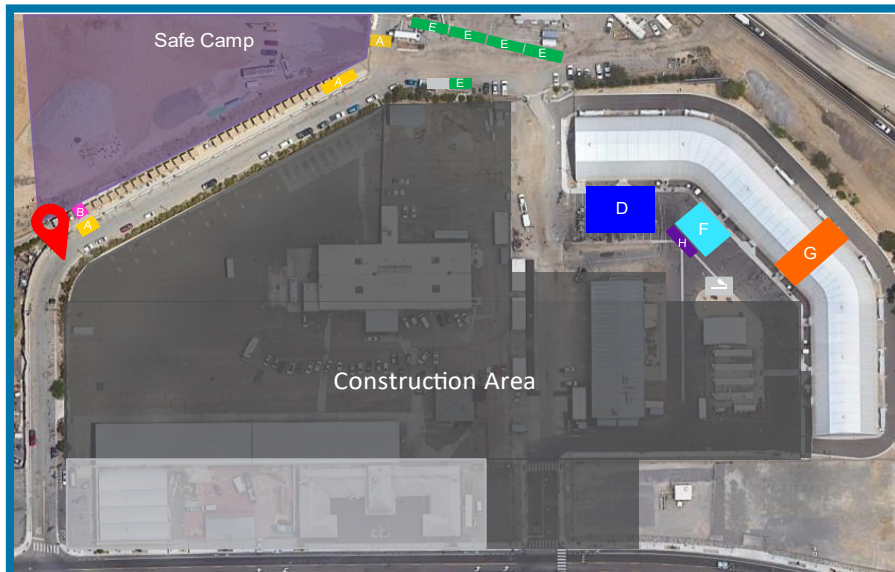
Seasonal Planning










Winter overflow has closed for the 2022-2023 winter season, however the warming center (food tent) will remain open 24 hours a day through the cold weather.

All are welcomed to the warming center any time of day or night. Once temperatures allow, the center will revert back to 6am – 6pm daily. We will continue to remain flexible through the fluctuating seasons in our community.

NEW Entrance & Campus Map

Sections of the Campus will continue to be closed or relocated to new temporary buildings during construction. The current temporary buildings include:



-  Entrance of Campus
-  The Welcome Center, Security, and Intake
-  Mail located across the Welcome Center
-  Bathrooms, showers, and laundry
-  Case Management, Behavioral Health and Partner Services
-  Meals, day use area and cooling area
-  Property Storage
-  Medical
-  Smoking Area

We appreciate your patience as we work to improve the Campus!

Campus Milestone: Safe Camp has moved to the permanent site

When you enter the Campus you will notice the ModPods have transitioned from Line Drive to the permanent site.

We would like to thank all Safe Camp participants and staff for all their patience. Stay tuned for more to come at Safe Camp!

Did you know?

The Mail Services building has moved

Mail has moved from Threlkel Street to Line Drive.

Even though the building has moved, the Campus mailing address and hours will remain the same:

Mailing Address:
1810 Threlkel Street,
Reno, NV 89512

Hours: 8AM-12PM &
1PM-5PM

Stay connected at www.washoecounty.gov/homeless

In partnership with Volunteers of America, Allied Universal, and Karma Box