

**WASHOE COUNTY
DISTRICT BOARD OF HEALTH**

Matt Smith, Chairman
Kitty Jung, Vice Chairman
George Furman, MD
Councilman Dan Gustin
George Hess, MD
Denis Humphreys, OD
Councilwoman Julia Ratti

NOTICE OF MEETING AGENDA

DISTRICT BOARD OF HEALTH
Building B – South Auditorium
1001 East Ninth Street, Reno, Nevada

November 17, 2011

1:00 PM

NOTICE

Pursuant To NRS 241.020, Please Be Advised That The Agenda For The District Board Of Health Meeting Has Been Posted At The Following Locations: Washoe County Health District (1001 E. 9th St), Reno City Hall (1 E. 1st St), Sparks City Hall (431 Prater Way), Washoe County Administration Building (1001 E. 9th St), And On The Washoe County Health District Website @ WWW.WASHOECOUNTY.US/HEALTH.

The Board of Health may take action on the items denoted as “(for possible action)”.

Business Impact Statement – A Business Impact Statement is available at the Washoe County Health District for those items denoted with a \$.

NOTE: Items on the agenda may be taken out of order; combined with other items; withdrawn from the agenda; moved to the agenda of another later meeting; moved to or from the Consent section; or may be voted on in a block. Items with a specific time designation will not be heard prior to the stated time, but may be heard later. Items listed in the Consent section of the agenda are voted on as a block and will not be read or considered separately unless withdrawn from the Consent Section.

The District Board of Health meetings are accessible to the disabled. Disabled members of the public who require special accommodations or assistance at the meeting are requested to notify Administrative Health Services in writing at the Washoe County Health District, PO Box 11130 Reno, NV 89520-0027 or by calling (775) 328-2416 24-Hours prior to the meeting.

Time Limits. Public comments are welcomed during the Public Comment periods for all matters, whether listed on the agenda or not, all comments are limited to three (3) minutes per person. Additionally, public comment of three (3) minutes per person may be heard during individual action items on the agenda. Persons are invited to submit comments in writing on the agenda items and/or attend and make comment on that item at the Board meeting. Persons may not allocate unused time to other speakers.

Response to Public Comments. The Board of Health can deliberate or take action only if a matter has been listed on an agenda properly posted prior to the meeting. During the public comment period, speakers may address matters listed or not listed on the published agenda. The *Open Meeting Law* does not expressly prohibit responses to public comments by the Board of Health. However, responses from the Board members to unlisted public comment topics could become deliberation on a matter without notice to the public. On the advice of legal counsel and to ensure the public has notice of all matters the Board of Health will consider, Board members may choose not to respond to public comments, except to correct factual inaccuracies, ask for Health District Staff action or to ask that a matter be listed on a future agenda. The Board of Health may do this either during the public comment item or during the following item: “Board Comments – Limited to Announcement or Issues for future Agendas.”

1:00 PM

1. Call to Order, Pledge of Allegiance Led by Invitation Mr. Smith
2. Roll Call Ms. Smith
3. Public Comment (3 minute time limit per person) Mr. Smith
4. Approval/Deletions to the Agenda for the November 17, 2011 Meeting (for possible action) Mr. Smith
5. Approval/Additions/Deletions to the Minutes of the October 27, 2011 Meeting (for possible action) Mr. Smith
6. Recognitions and Proclamations Mr. Smith
 - A. Introduction of Ms. Kelsey Worthington – UNR Medical Student, Intern
 - B. Years-of-Service
 1. Norma Jackson – EPHP – 5 Years
 - C. Years-of-Service to the Washoe County District Board of Health's Sewage, Wastewater, and Sanitation (SWS) Hearing Board, Serving from through October 2011
 1. Karen Sage-Rosenau
 - D. Emergency Responders to the Reno National Championship Air Races Event of September 16, 2011
7. Consent Agenda Mr. Smith

Matters, which the District Board of Health may consider in one motion. Any item, however, may be discussed separately by Board member request. Any exceptions to the consent agenda must be stated prior to approval.

 - A. Air Quality Management Cases
 1. Recommendation to Uphold Citations Unappealed to the Air Pollution Control Hearing Board
 - a. No Cases This Month
 2. Recommendations of Cases Appealed to the Air Pollution Control Hearing Board
 - a. Golden Gate Petroleum – Case No. 1065, NOV No. 4849 (for possible action)
 - B. Recommendation to Approve Variance Case(s) Presented to the Sewage, Wastewater & Sanitation Hearing Board Mr. Tyre
 1. No Cases This Month
 - C. Budget Amendments / Interlocal Agreements
 1. Retroactive Approval of District Health Officer Acceptance of Subgrant Amendment #1 from the Nevada State Health Division Sexually Transmitted Disease (STD) Prevention and Control Program, in the Amount of \$123,778 for the Period of January 1, 2011 through December 31, 2011; and Approval of Amendments Totaling an Increase of \$4,755 in Both Revenue and Expenses to the Adopted FY 12 STD Grant Program, IO 10014 to Bring the FY 12 Adopted Budget into Alignment with the Grant (for possible action)
 2. Approval of Amendments Totaling an Increase of \$49,000 in Both Revenue and Expense to the FY 12 Communities Putting Prevention to Work, CPPW – ARRA, Program Grant Budget (IO 10988); Approve the Donation to Sierra Vista Elementary in the Amount of \$1,000 to Assist with Establishment of a School Garden to Increase School-aged Children's Access to Healthy Fruits and Vegetables (Grant Funded) (for possible action)
8. Approval of Amendments Totaling a Net \$ -0- Increase/Decrease to the FY 12 Chronic Disease/Injury Prevention Program Grant Budget (CC 170800); and Authorizing the Creation of an Intermittently Hourly Health Educator Position (PC # TBD) as Evaluated by the Job Evaluation Committee (JEC) (for possible action) Ms. Brown

- | | | |
|-----|--|---|
| 9. | Air Pollution Control Hearing Board Cases – Appealed to the District Board of Health
A. No Cases This Month | Mr. Bonderson |
| 10. | Regional Emergency Medical Services Authority CONTINUED TO DECEMBER
A. Review and Acceptance of the Operations and Financial Report for October 2011
(for possible action)
B. Update of REMSA's Community Activities Since October 2011 | Mr. Gubbels |
| 11. | Review and Acceptance of the Monthly Public Health Fund Revenue and Expenditure for October 2011 (for possible action) | Ms. Coulombe |
| 12. | Reappointment of Mr. J. Richard ("Dick") Barnard, CPA for a Five (5) Year Period Ending November 18, 2016; Mr. Louis ("Louie") S. Test, Esquire for a Four (4) Year Period Ending November 18, 2015; and Appointment of Mr. James ("Jim") R. Begbie for a Three (3) Year Period Ending November 18, 2014, to the REMSA Governing Board (for possible action) | Ms. Coulombe |
| 13. | Update – Presentation of Accreditation Efforts for Nevada Health Districts through the Nevada Public Health Foundation | Ms. E. Brown |
| 14. | Staff Reports and Program Updates
A. Director, Epidemiology and Public Health Preparedness – Communicable Disease; Public Health Preparedness (PHP) Activities
B. Director, Community and Clinical Health Services – Sexually Transmitted Disease Patient Delivered Partner Therapy; Northern Nevada HOPES Appoints New Executive Director; Prematurity Awareness Month; Public Health Accreditation Collaborative with Southern Nevada Health District
C. Director, Environmental Health Services – Food Safety; Special Events; Underground Storage Tank (UST); Vector-Borne Diseases Prevention Program
D. Director, Air Quality Management – Monthly Report of Air Quality Activities, Permitting Activities, Compliance/Inspection Activity, and Enforcement Activity
E. Administrative Health Services Officer – No Report This Month
F. District Health Officer – 2012/2013 Legislative Sessions; Budget; Human Resources; Communication; Washoe County & Community Activities; Media Contacts and Outreach; State-wide (and Beyond) Organizational Efforts; District Board of Health Information and Resources | Dr. Todd
Ms. Brown
Mr. Sack
Mr. Dick
Ms. Coulombe
Dr. Iser |
| 15. | Board Comment – Limited to Announcements or Issues for Future Agendas | Mr. Smith |
| 16. | Public Comment – (3 minute time limit per person) | Mr. Smith |
| 17. | Adjournment (for possible action) | Mr. Smith |

**WASHOE COUNTY
DISTRICT BOARD OF HEALTH**

Matt Smith, Chairman
Kitty Jung, Vice Chairman
George Furman, MD
Councilman Dan Gustin
George Hess, MD
Denis Humphreys, OD
Councilwoman Julia Ratti

NOTICE OF MEETING AGENDA

DISTRICT BOARD OF HEALTH
Building B – South Auditorium
1001 East Ninth Street, Reno, Nevada
November 17, 2011

1:00 PM

NOTICE

Pursuant To NRS 241.020, Please Be Advised That The Agenda For The District Board Of Health Meeting Has Been Posted At The Following Locations: Washoe County Health District (1001 E. 9th St), Reno City Hall (1 E. 1st St), Sparks City Hall (431 Prater Way), Washoe County Administration Building (1001 E. 9th St), And On The Washoe County Health District Website @ WWW.WASHOECOUNTY.US/HEALTH.

The Board of Health may take action on the items denoted as “(for possible action)”.

Business Impact Statement – A Business Impact Statement is available at the Washoe County Health District for those items denoted with a \$.

NOTE: Items on the agenda may be taken out of order; combined with other items; withdrawn from the agenda; moved to the agenda of another later meeting; moved to or from the Consent section; or may be voted on in a block. Items with a specific time designation will not be heard prior to the stated time, but may be heard later. Items listed in the Consent section of the agenda are voted on as a block and will not be read or considered separately unless withdrawn from the Consent Section.

The District Board of Health meetings are accessible to the disabled. Disabled members of the public who require special accommodations or assistance at the meeting are requested to notify Administrative Health Services in writing at the Washoe County Health District, PO Box 11130 Reno, NV 89520-0027 or by calling (775) 328-2416 24-Hours prior to the meeting.

Time Limits. Public comments are welcomed during the Public Comment periods for all matters, whether listed on the agenda or not, all comments are limited to three (3) minutes per person. Additionally, public comment of three (3) minutes per person may be heard during individual action items on the agenda. Persons are invited to submit comments in writing on the agenda items and/or attend and make comment on that item at the Board meeting. Persons may not allocate unused time to other speakers.

Response to Public Comments. The Board of Health can deliberate or take action only if a matter has been listed on an agenda properly posted prior to the meeting. During the public comment period, speakers may address matters listed or not listed on the published agenda. The *Open Meeting Law* does not expressly prohibit responses to public comments by the Board of Health. However, responses from the Board members to unlisted public comment topics could become deliberation on a matter without notice to the public. On the advice of legal counsel and to ensure the public has notice of all matters the Board of Health will consider, Board members may choose not to respond to public comments, except to correct factual inaccuracies, ask for Health District Staff action or to ask that a matter be listed on a future agenda. The Board of Health may do this either during the public comment item or during the following item: “Board Comments – Limited to Announcement or Issues for future Agendas.”

1:00 PM

1. Call to Order, Pledge of Allegiance Led by Invitation Mr. Smith
2. Roll Call Ms. Smith
3. Public Comment (3 minute time limit per person) Mr. Smith
4. Approval/Deletions to the Agenda for the November 17, 2011 Meeting **(for possible action)** Mr. Smith
5. Approval/Additions/Deletions to the Minutes of the October 27, 2011 Meeting **(for possible action)** Mr. Smith
6. Recognitions and Proclamations Mr. Smith
 - A. Introduction of Ms. Kelsey Worthington – UNR Medical Student, Intern
 - B. Years-of-Service
 1. Norma Jackson – EPHP – 5 Years
 - C. Years-of-Service to the Washoe County District Board of Health's Sewage, Wastewater, and Sanitation (SWS) Hearing Board, Serving from through October 2011
 1. Karen Sage-Rosenau
 - D. Emergency Responders to the Reno National Championship Air Races Event of September 16, 2011
7. Consent Agenda Mr. Smith

Matters, which the District Board of Health may consider in one motion. Any item, however, may be discussed separately by Board member request. Any exceptions to the consent agenda must be stated prior to approval.

 - A. Air Quality Management Cases
 1. Recommendation to Uphold Citations Unappealed to the Air Pollution Control Hearing Board Mr. Bonderson
 - a. No Cases This Month
 2. Recommendations of Cases Appealed to the Air Pollution Control Hearing Board Mr. Bonderson
 - a. Golden Gate Petroleum – Case No. 1065, NOV No. 4849 **(for possible action)**
 - B. Recommendation to Approve Variance Case(s) Presented to the Sewage, Wastewater & Sanitation Hearing Board Mr. Tyre
 1. No Cases This Month
 - C. Budget Amendments / Interlocal Agreements
 1. Retroactive Approval of District Health Officer Acceptance of Subgrant Amendment #1 from the Nevada State Health Division Sexually Transmitted Disease (STD) Prevention and Control Program, in the Amount of \$123,778 for the Period of January 1, 2011 through December 31, 2011; and Approval of Amendments Totaling an Increase of \$4,755 in Both Revenue and Expenses to the Adopted FY 12 STD Grant Program, IO 10014 to Bring the FY 12 Adopted Budget into Alignment with the Grant **(for possible action)**
 2. Approval of Amendments Totaling an Increase of \$49,000 in Both Revenue and Expense to the FY 12 Communities Putting Prevention to Work, CPPW – ARRA, Program Grant Budget (IO 10988); Approve the Donation to Sierra Vista Elementary in the Amount of \$1,000 to Assist with Establishment of a School Garden to Increase School-aged Children's Access to Healthy Fruits and Vegetables (Grant Funded) **(for possible action)**
8. Approval of Amendments Totaling a Net \$ -0- Increase/Decrease to the FY 12 Chronic Disease/Injury Prevention Program Grant Budget (CC 170800); and Authorizing the Creation of an Intermittently Hourly Health Educator Position (PC # TBD) as Evaluated by the Job Evaluation Committee (JEC) **(for possible action)** Ms. Brown

- | | | |
|-----|--|---|
| 9. | Air Pollution Control Hearing Board Cases – Appealed to the District Board of Health
A. No Cases This Month | Mr. Bonderson |
| 10. | Regional Emergency Medical Services Authority CONTINUED TO DECEMBER
A. Review and Acceptance of the Operations and Financial Report for October 2011
(for possible action)
B. Update of REMSA's Community Activities Since October 2011 | Mr. Gubbels |
| 11. | Review and Acceptance of the Monthly Public Health Fund Revenue and Expenditure for October 2011 (for possible action) | Ms. Coulombe |
| 12. | Reappointment of Mr. J. Richard ("Dick") Barnard, CPA for a Five (5) Year Period Ending November 18, 2016; Mr. Louis ("Louie") S. Test, Esquire for a Four (4) Year Period Ending November 18, 2015; and Appointment of Mr. James ("Jim") R. Begbie for a Three (3) Year Period Ending November 18, 2014, to the REMSA Governing Board (for possible action) | Ms. Coulombe |
| 13. | Update – Presentation of Accreditation Efforts for Nevada Health Districts through the Nevada Public Health Foundation | Ms. E. Brown |
| 14. | Staff Reports and Program Updates
A. Director, Epidemiology and Public Health Preparedness – Communicable Disease; Public Health Preparedness (PHP) Activities
B. Director, Community and Clinical Health Services – Sexually Transmitted Disease Patient Delivered Partner Therapy; Northern Nevada HOPES Appoints New Executive Director; Prematurity Awareness Month; Public Health Accreditation Collaborative with Southern Nevada Health District
C. Director, Environmental Health Services – Food Safety; Special Events; Underground Storage Tank (UST); Vector-Borne Diseases Prevention Program
D. Director, Air Quality Management – Monthly Report of Air Quality Activities, Permitting Activities, Compliance/Inspection Activity, and Enforcement Activity
E. Administrative Health Services Officer – No Report This Month
F. District Health Officer – 2012/2013 Legislative Sessions; Budget; Human Resources; Communication; Washoe County & Community Activities; Media Contacts and Outreach; State-wide (and Beyond) Organizational Efforts; District Board of Health Information and Resources | Dr. Todd
Ms. Brown
Mr. Sack
Mr. Dick
Ms. Coulombe
Dr. Iser |
| 15. | Board Comment – Limited to Announcements or Issues for Future Agendas | Mr. Smith |
| 16. | Public Comment – (3 minute time limit per person) | Mr. Smith |
| 17. | Adjournment (for possible action) | Mr. Smith |



11/17/11

Washoe County Health District



Public Health
Prevent. Promote. Protect

November 7, 2011

To: Members District Board of Health

From: Eileen Coulombe

Subject: Public Health Fund Expenditure and Revenue Report for October 2011
Agenda Item No. - 11.

Recommendation

Staff recommends that the District Board of Health accept the attached report of revenues and expenditures for the Health Fund for October 2011 of fiscal year 12.

Background

The attached reports are for the accounting period 4/12 and the percentages should approximate 33% of the year. Our total revenues and expenditures for the current year (FY12) compared to last year (FY11) are as follows:

October 2011	FY12 – REV	FY11 – REV	FY12 – EXP	FY11 – EXP
Transfer	0%	8%		
AHS	30%	22%	29%	26%
AQM	23%	30%	34%	32%
CCHS	20%	20%	29%	30%
EHS	35%	37%	33%	33%
EPHP	33%	9%	34%	22%
TOTAL	25%	23%	30%	29%

The Environmental Oversight Account for October 2011 is \$108,252.40.

I will be happy to any questions of the Board during the meeting or you may contact me at 328-2417.

Administrative Health Services Officer

Enclosure

Accounts	2012 Plan	2012 Actuals	Balance	Act%	2011 Plan	2011 Actual	Balance	Act%
422503 Environmental Permits	46,900.00-	14,972.00-	31,928.00-	32	43,000.00-	15,267.00-	27,733.00-	36
422504 Pool Permits	63,000.00-	9,018.00-	53,982.00-	14	63,000.00-	7,594.00-	55,406.00-	12
422505 RV Permits	9,700.00-	2,872.00-	6,828.00-	30	10,500.00-	2,738.00-	7,762.00-	26
422507 Food Service Permits	342,000.00-	100,715.00-	241,285.00-	29	342,000.00-	102,463.00-	239,537.00-	30
422508 Wat Well Const Perm	27,000.00-	4,701.00-	22,299.00-	17	34,500.00-	10,436.00-	24,064.00-	30
422509 Water Company Permits	3,500.00-	702.00-	2,798.00-	20	4,000.00-	468.00-	3,532.00-	12
422510 Air Pollution Permits	370,485.00-	88,542.75-	281,942.25-	24	391,000.00-	99,753.25-	291,246.75-	26
422511 ISDS Permits	47,000.00-	21,406.00-	25,594.00-	46	47,000.00-	23,148.00-	23,852.00-	49
422513 Special Event Permits	74,000.00-	39,061.00-	34,939.00-	53	70,500.00-	38,696.00-	31,804.00-	55
422514 Initial Applic Fee	25,000.00-	7,130.00-	17,870.00-	29	35,000.00-	7,120.00-	27,880.00-	20
* Licenses and Permits	1,008,585.00-	289,119.75-	719,465.25-	29	1,040,500.00-	307,683.25-	732,816.75-	30
431100 Federal Grants	5,668,114.10-	1,318,753.81-	4,349,360.29-	23	6,300,118.54-	975,690.73-	5,324,427.81-	15
431105 Federal Grants - Indirect	31,837.00-	41,360.97-	9,523.97	130	32,599.00-	13,655.96-	18,943.04-	42
432100 State Grants	228,327.00-	25,772.30-	202,554.70-	11	470,737.42-	190,470.34-	280,267.08-	40
432310 Tire Fee NRS 444A.090	452,000.00-	222,991.65-	229,008.35-	49	370,535.00-	226,129.72-	144,405.28-	61
432311 Pol Ctr/ 455B.830	297,006.07-	79,550.00-	217,456.07-	27	290,140.86-	77,725.00-	212,415.86-	27
* Intergovernmental	6,677,284.17-	1,688,428.73-	4,988,855.44-	25	7,464,130.82-	1,483,671.75-	5,980,459.07-	20
460500 Other Immunizations	89,000.00-	27,003.73-	61,996.27-	30	85,000.00-	31,445.44-	53,554.56-	37
460501 Medicaid Clinical Services	40,300.00-	12,531.58-	27,768.42-	31	32,000.00-	16,550.25-	15,449.75-	52
460503 Childhood Immunizations	59,000.00-	12,851.54-	46,148.46-	22	140,000.00-	26,822.50-	113,177.50-	19
460508 Tuberculosis	6,250.00-	1,272.09-	4,977.91-	20	7,000.00-	2,578.33-	4,421.67-	37
460509 Water Quality						144.00-	144.00-	
460510 IT Overlay	96,800.00-	29,808.00-	66,992.00-	31	111,000.00-	30,727.00-	80,273.00-	28
460511 Birth and Death Certificates	280,000.00-	143,263.00-	136,737.00-	51	210,000.00-	71,790.00-	138,210.00-	34
460512 Duplication Service Fees		6.70-	6.70		115.00-	1,118.04-	1,003.04	972
460513 Other Health Service Charges	2,700.00-	394.00-	2,306.00-	15	2,700.00-	4,821.25-	2,121.25	179
460514 Food Service Certification	9,000.00-	5,203.00-	3,797.00-	58	8,000.00-	4,539.00-	3,461.00-	57
460515 Medicare Reimbursement	300.00-		300.00-		500.00-	50.00-	450.00-	10
460516 Pgm Inc-3rd Prty Rec	4,750.00-	8,163.93-	3,413.93	172	6,500.00-	1,581.32-	4,918.68-	24
460517 Influenza Immunization	7,000.00-	1,577.00-	5,423.00-	23	12,000.00-	1,730.00-	10,270.00-	14
460518 STD Fees	28,000.00-	7,685.58-	20,314.42-	27	30,000.00-	10,120.72-	19,879.28-	34
460520 Eng Serv Health	42,000.00-	9,943.00-	32,057.00-	24	55,000.00-	15,392.00-	39,608.00-	28
460521 Plan Review - Pools & Spas	2,500.00-	1,907.00-	593.00-	76	2,500.00-	2,761.00-	261.00	110
460523 Plan Review - Food Services	17,000.00-	5,873.00-	11,127.00-	35	17,000.00-	9,300.15-	7,699.85-	55
460524 Family Planning	44,000.00-	10,478.62-	33,521.38-	24	66,000.00-	15,705.49-	50,294.51-	24
460525 Plan Review - Vector	24,000.00-	9,620.00-	14,380.00-	40	24,000.00-	12,693.00-	11,307.00-	53
460526 Plan Review-Air Quality	25,000.00-	11,008.00-	13,992.00-	44	11,270.00-	6,800.00-	4,470.00-	60
460527 NOE-AQM	76,000.00-	34,608.00-	41,392.00-	46	40,000.00-	29,660.00-	10,340.00-	74
460528 NESHAP-AQM	66,000.00-	24,374.00-	41,626.00-	37	62,000.00-	25,205.00-	36,795.00-	41
460529 Assessments-AQM	28,000.00-	12,978.00-	15,022.00-	46	21,000.00-	9,660.00-	11,340.00-	46
460530 Inspector Registr-AQ	3,115.00-	2,670.00-	445.00-	86	1,900.00-	3,395.00-	1,495.00-	179
460531 Dust Plan-Air Quality	165,000.00-	35,940.00-	129,060.00-	22	165,000.00-	47,712.00-	117,288.00-	29
460533 Quick Start		87.00-	87.00			29.00-	29.00	
460534 Child Care Inspection	8,000.00-	2,967.00-	5,033.00-	37	8,300.00-	3,795.00-	4,505.00-	46
460535 Pub Accomod Inspectr	16,000.00-	4,865.00-	11,135.00-	30	17,000.00-	4,838.00-	12,162.00-	28

Washoe County Health District
 REVENUE
 Pds 1-4, FY 2012

Accounts	2012 Plan	2012 Actuals	Balance	Act%	2011 Plan	2011 Actual	Balance	Act%
460570 Education Revenue	13,400.00-	2,710.00-	10,690.00-	20	13,400.00-	4,982.00-	8,418.00-	37
* Charges for Services	1,153,115.00-	419,788.77-	733,326.23-	36	1,149,185.00-	395,945.49-	753,239.51-	34
484050 Donations Federal Pgm Income	41,450.00-	15,768.37-	25,681.63-	38		13,516.08-	13,516.08	
485100 Reimbursements		150.00-	150.00					
485300 Other Misc Govt Rev	805,650.00-		805,650.00-					
* Miscellaneous	847,100.00-	15,918.37-	831,181.63-	2		13,516.08-	13,516.08	
** Revenue	9,686,084.17-	2,413,255.62-	7,272,828.55-	25	9,653,815.82-	2,200,816.57-	7,452,999.25-	23

Washoe County Health District
EXPENSE
Pds 1-4, FY 2012

Accounts	2012 Plan	2012 Actuals	Balance	Act%	2011 Plan	2011 Actual	Balance	Act%
701110 Base Salaries	9,426,414.73	2,921,584.77	6,504,829.96	31	10,284,441.92	3,059,224.36	7,225,217.56	30
701120 Part Time	542,290.09	182,222.77	360,067.32	34	654,044.80	192,304.81	461,739.99	29
701130 Pooled Positions	322,215.50	126,425.52	195,789.98	39	413,292.66	152,689.29	260,563.37	37
701140 Holiday Work	1,200.00	985.16	214.84	82	1,200.00	1,069.44	130.56	89
701200 Incentive Longevity	162,380.00	1,474.60	160,905.40	1	162,000.00	907.72	161,092.28	1
701300 Overtime	57,406.25	20,297.04	37,109.21	35	43,664.26	66,009.46	22,345.20	151
701400 Standby Pay	3,000.00	5,427.32	5,427.32	13	3,000.00	11,265.18	18,734.82	38
701408 Call Back	57,507.78	376.24	2,623.76	13	48,368.57	1,197.82	1,802.18	40
701412 Salary Adjustment		98,236.41	57,507.78			64,650.80	48,368.57	
701413 Vac Payoff/Sick Pay-Term		13,896.47	98,236.41			16,984.33	64,650.80	
701417 Comp Time			13,896.47				16,984.33	
701500 Merit Awards	92,818.62		92,818.62		120,175.23		120,175.23	
* Salaries and Wages	10,479,595.73	3,370,926.30	7,108,669.43	32	11,423,059.84	3,566,303.21	7,856,756.63	31
705110 Group Insurance	1,489,390.16	457,248.27	1,032,141.89	31	1,598,298.03	472,544.60	1,125,753.43	30
705199 Lab Cost Sav-Benef		1,438.00	1,438.00					
705210 Retirement	2,354,960.12	727,867.10	1,627,093.02	31	2,377,608.28	699,730.84	1,677,877.44	29
705215 Retirement Calculation	355,282.00	997.20	354,284.80	0	410,797.00		410,797.00	
705230 Medicare April 1986	136,532.33	44,213.83	92,318.50	32	148,666.06	47,200.97	101,465.09	32
705320 Workmens Comp	63,088.76	25,763.24	37,305.52	41	54,530.00	18,176.68	36,353.32	33
705330 Unemploy Comp	14,892.40		14,892.40		33,440.00	5,573.34	27,866.66	17
705360 Benefit Adjustment					8,471.00		8,471.00	
* Employee Benefits	4,414,145.77	1,254,671.64	3,159,474.13	28	4,631,810.37	1,243,226.43	3,388,583.94	27
710100 Professional Services	858,644.42	36,340.59	822,303.83	4	778,812.94	77,340.60	701,472.34	10
710105 Medical Services	8,914.00	757.00	8,157.00	8	7,248.00	1,058.00	6,190.00	15
710108 MD Consultants	60,900.00	12,325.00	48,575.00	20	60,900.00	16,437.50	44,462.50	27
710110 Contracted/Temp Services	87,780.00	8,689.76	79,090.24	10	115,801.22	20,895.10	94,906.12	18
710119 Subrecipient Payments	186,242.00	37,639.59	148,602.41	20	186,242.00	46,599.14	139,642.86	25
710200 Service Contract	68,633.00	51,214.59	17,418.41	75	66,915.00	16,304.16	50,610.84	24
710205 Repairs and Maintenance	19,940.00	2,121.85	17,818.15	11	16,864.00	5,545.45	11,318.55	33
710210 Software Maintenance	12,000.00	9,000.00	3,000.00	75	12,000.00		12,000.00	
710300 Operating Supplies	143,790.00	53,976.02	89,813.98	38	178,347.14	29,969.54	148,377.60	17
710302 Small Tools & Allow	1,685.00		1,685.00		2,185.00	325.50	1,859.50	15
710308 Animal Supplies	2,000.00	323.75	1,676.25	16	2,000.00		2,000.00	
710319 Chemical Supplies	281,950.00	265,391.74	16,558.26	94	321,741.00	321,290.65	450.35	100
710325 Signs and Markers		1,336.50	1,336.50					
710334 Copy Machine Expense	29,254.89	7,006.41	22,248.48	24	32,011.00	8,302.35	23,708.65	26
710350 Office Supplies	44,277.01	13,930.96	30,346.05	31	49,948.43	15,129.13	34,819.30	30
710355 Books and Subscriptions	7,684.00	2,720.81	4,963.19	35	11,084.00	1,051.62	10,032.38	9
710360 Postage	20,915.00	5,808.90	15,106.10	28	19,538.00	6,255.89	13,282.11	32
710361 Express and Courier	780.00	88.38	691.62	11	815.00	183.18	631.82	22
710391 Fuel & Lube	100.00		100.00		100.00		100.00	
710500 Other Expense	22,088.31	5,208.04	16,880.27	24	34,355.88	4,659.27	29,696.61	14
710502 Printing	16,547.00	3,350.15	13,196.85	20	31,886.72	12,966.87	18,919.85	41
710503 Licenses & Permits	8,540.00	2,091.00	6,449.00	24	6,875.00	2,580.00	4,295.00	38
710505 Rental Equipment	2,300.00	396.00	1,904.00	17	1,800.00		1,800.00	

Accounts	2012 Plan	2012 Actuals	Balance	Act%	2011 Plan	2011 Actual	Balance	Act%
710506 Dept Insurance Deductible		150.00	150.00-			150.00	150.00-	
710507 Network and Data Lines	5,960.00	4,211.38	1,748.62	71	5,460.00	1,972.90	3,487.10	36
710508 Telephone Land Lines	45,149.00	12,409.54	32,739.46	27	53,739.92	13,402.88	40,337.04	25
710509 Seminars and Meetings	32,940.00	10,481.00	22,459.00	32	38,233.00	12,617.18	25,615.82	33
710512 Auto Expense	23,518.00	4,574.89	18,943.11	19	16,457.00	4,063.79	12,393.21	25
710514 Regulatory Assessments						27.99-	27.99-	
710519 Cellular Phone	16,640.00	3,960.38	12,679.62	24	13,410.00	5,052.45	8,357.55	38
710529 Dues	6,886.00	2,043.00	4,843.00	30	6,961.00	2,554.00	4,407.00	37
710535 Credit Card Fees	10,495.00	3,370.78	7,124.22	32	10,545.00	3,031.17	7,513.83	29
710546 Advertising	28,374.52	42,415.38	14,040.86-	149	27,534.70	17,793.13	9,741.57	65
710552 Moving Costs		1,046.14	1,046.14-					
710577 Uniforms & Special Clothing	3,150.00		3,150.00		3,450.00		3,450.00	
710585 Undesignated Budget	916,187.00		916,187.00		3,155.00-		3,155.00-	
710600 LT Lease-Office Space	113,439.00	46,709.25	66,729.75	41	120,932.89	51,261.10	69,671.79	42
710703 Biologicals	227,913.79	40,333.85	187,579.94	18	313,025.68	39,565.63	273,460.05	13
710714 Referral Services					11,300.00		11,300.00	
710721 Outpatient	97,399.00	2,265.92	95,133.08	2	122,249.97	4,728.97	117,521.00	4
710872 Food Purchases	3,726.00	194.26	3,531.74	5	3,001.00	796.88	2,204.12	27
711010 Utilities	2,880.00		2,880.00		1,100.00		1,100.00	
711100 ESD Asset Management	17,160.00	6,084.00	11,076.00	35	21,600.00	6,660.00	14,940.00	31
711113 Equip Srv Replace	44,139.00	15,323.22	28,815.78	35	41,946.18	14,694.06	27,252.12	35
711114 Equip Srv O & M	57,849.02	16,938.60	40,910.42	29	58,538.39	19,379.99	39,158.40	33
711115 Equip Srv Motor Pool		5,778.64	5,778.64-		2,325.00	1,097.50	1,227.50	47
711117 ESD Fuel Charge	48,768.76	20,972.13	27,796.63	43	41,646.75	18,446.32	23,200.43	44
711119 Prop & Liab Billings	77,036.32	25,678.76	51,357.56	33	72,200.00	24,066.64	48,133.36	33
711210 Travel	152,381.00	21,521.83	130,859.17	14	206,274.25	31,163.60	175,110.65	15
711300 Cash Over Short		3.00-	3.00-			0.68	0.68-	
711502 Build Imp nonCapital		127.00	127.00-					
711504 Equipment nonCapital	36,799.98	72,947.79	36,147.81-	198	83,660.37	22,372.19	61,288.18	27
* Services and Supplies	3,853,756.02	879,251.78	2,974,504.24	23	3,209,906.43	881,793.00	2,328,113.43	27
781004 Equipment Capital	311,577.12	262,214.75	49,362.37	84	323,318.72	43,283.58	280,035.14	13
* Capital Outlay	311,577.12	262,214.75	49,362.37	84	323,318.72	43,283.58	280,035.14	13
** Expenses	19,059,074.64	5,767,064.47	13,292,010.17	30	19,588,095.36	5,734,606.22	13,853,489.14	29
621001 Transfer From General	7,250,850.00-		7,250,850.00-		8,192,500.00-	682,708.00-	7,509,792.00-	8
* Transfers In	7,250,850.00-		7,250,850.00-		8,192,500.00-	682,708.00-	7,509,792.00-	8
** Other Financing Strct/Use	7,250,850.00-		7,250,850.00-		8,192,500.00-	682,708.00-	7,509,792.00-	8
*** Total	2,122,140.47	3,353,808.85	1,231,668.38-	158	1,741,779.54	2,851,081.65	1,109,302.11-	164

Accounts	2012 Plan	2012 Actuals	Balance	Act%	2011 Plan	2011 Actual	Balance	Act%
431100 Federal Grants	1,191,109.00-	325,284.69-	865,824.31-	27	1,191,109.00-	257,437.26-	933,671.74-	22
431105 Federal Grants - Indirect		28,103.25-	28,103.25-					
* Intergovernmental	1,191,109.00-	353,387.94-	837,721.06-	30	1,191,109.00-	257,437.26-	933,671.74-	22
460511 Birth and Death Certificates		310.00	310.00-					
460512 Duplication Service Fees		310.00	310.00-					
* Charges for Services		310.00	310.00-					
** Revenue	1,191,109.00-	353,077.94-	838,031.06-	30	1,191,224.00-	257,460.26-	933,763.74-	22
701110 Base Salaries	1,672,188.45	546,421.22	1,125,767.23	33	1,806,128.35	550,750.30	1,255,378.05	30
701120 Part Time	24,218.74	7,641.28	16,577.46	32	24,427.89	7,539.60	16,888.29	31
701130 Pooled Positions	24,125.42	7,409.67	16,715.75	31	83,483.00	10,875.41	72,607.59	13
701200 Incentive Longevity	31,900.00	490.38	31,409.62	2	29,800.00		29,800.00	
701300 Overtime	2,100.00	811.27	1,288.73	39	1,000.00	6,050.77	5,050.77-	605
701412 Salary Adjustment	58,579.12	388.28	58,579.12		5,347.52-		5,347.52-	
701413 Vac Payoff/Sick Pay-Term		0.48	388.28-					
701417 Comp Time		0.48	0.48-					
* Salaries and Wages	1,813,111.73	563,162.58	1,249,949.15	31	1,939,491.72	575,216.08	1,364,275.64	30
705110 Group Insurance	271,401.01	88,930.00	182,471.01	33	288,679.65	90,299.44	198,380.21	31
705199 Lab Cost Sav-Benef		292.60-	292.60					
705210 Retirement	402,901.49	128,112.94	274,788.55	32	394,720.53	118,288.45	276,432.08	30
705215 Retirement Calculation	355,282.00		355,282.00		410,797.00		410,797.00	
705230 Medicare April 1986	24,227.84	7,805.12	16,422.72	32	26,138.11	8,016.53	18,121.58	31
705320 Workmens Comp	12,363.45	4,121.16	8,242.29	33	10,332.00	3,443.96	6,888.04	33
705330 Unemply Comp	2,920.50	2,920.50	2,920.50		6,336.00	1,055.98	5,280.02	17
* Employee Benefits	1,069,096.29	228,676.62	840,419.67	21	1,137,003.29	221,104.36	915,898.93	19
710100 Professional Services	9,500.00	210.00	9,290.00	2	2,300.00	1,905.00	395.00	83
710105 Medical Services	350.00		350.00			207.00	207.00-	
710200 Service Contract	1,500.00	1.96	1,498.04	0	750.00	221.48	528.52	30
710205 Repairs and Maintenance	400.00		400.00		700.00		700.00	
710300 Operating Supplies	17,251.00	16,014.84	1,236.16	93	26,100.00	520.77	25,579.23	2
710334 Copy Machine Expense	5,680.00	1,841.55	3,838.45	32	11,594.00	2,234.54	9,359.46	19
710350 Office Supplies	11,900.00	6,453.06	5,446.94	54	16,200.00	2,594.23	13,605.77	16
710355 Books and Subscriptions	1,350.00	787.00	563.00	58	1,350.00	537.90	812.10	40
710360 Postage	1,175.00	229.91	945.09	20	1,550.00	295.51	1,254.49	19
710361 Express and Courier	100.00		100.00		100.00		100.00	
710500 Other Expense	1,600.00	313.90	1,286.10	20	1,100.00	429.10	670.90	39
710502 Printing	2,080.00	504.39	1,575.61	24	9,050.00	310.27	8,739.73	3
710503 Licenses & Permits	2,490.00	1,806.00	684.00	73	2,300.00	740.00	1,560.00	32
710507 Network and Data Lines	630.00	159.96	470.04	25	480.00	161.46	318.54	34
710508 Telephone Land Lines	11,340.00	2,641.69	8,698.31	23	11,380.00	2,863.50	8,516.50	25
710509 Seminars and Meetings	7,400.00	3,136.00	4,264.00	42	5,300.00	2,102.18	3,197.82	40
710512 Auto Expense	3,900.00	1,211.93	2,688.07	31	3,900.00	479.30	3,420.70	12
710519 Cellular Phone	1,470.00	698.23	771.77	47	250.00	354.84	104.84-	142
710529 Dues	2,850.00	1,045.00	1,805.00	37	2,850.00	320.00	2,530.00	11
710546 Advertising	150.00		150.00		150.00		150.00	
710552 Moving Costs		1,046.14	1,046.14-					

Washoe County Health District
 Administrative Health Services
 Pds 1-4, FY 2012

Accounts	2012 Plan	2012 Actuals	Balance	Act%	2011 Plan	2011 Actual	Balance	Act%
710600 LT Lease-Office Space	71,788.00	29,859.25	41,928.75	42	80,296.00	34,407.80	45,888.20	43
710872 Food Purchases	150.00		150.00		150.00		150.00	
711010 Utilities	1,000.00		1,000.00		100.00		100.00	
711100 ESD Asset Management	312.00	104.00	208.00	33	360.00	120.00	240.00	33
711114 Equip Srv O & M	767.04	247.80	519.24	32	702.30	268.95	433.35	38
711115 Equip Srv Motor Pool		50.00	50.00-		1,000.00	267.50	732.50	27
711117 ESD Fuel Charge	557.28	286.27	271.01	51	509.46	204.92	304.54	40
711119 Prop & Liab Billings	15,154.15	5,051.36	10,102.79	33	13,680.00	4,559.96	9,120.04	33
711210 Travel	17,000.00	3,844.75	13,155.25	23	17,500.00	6,126.92	11,373.08	35
711300 Cash Over Short		3.00-	3.00			0.68	0.68-	
711504 Equipment nonCapital	1,650.00	23,515.57	21,865.57-	1,425	1,700.00	338.32	1,361.68	20
* Services and Supplies	191,494.47	101,057.56	90,436.91	53	213,401.76	62,572.13	150,829.63	29
** Expenses	3,073,702.49	892,896.76	2,180,805.73	29	3,289,896.77	858,892.57	2,431,004.20	26
*** Total	1,882,593.49	539,818.82	1,342,774.67	29	2,098,672.77	601,432.31	1,497,240.46	29

Accounts	2012 Plan	2012 Actuals	Balance	Act%	2011 Plan	2011 Actual	Balance	Act%
422510 Air Pollution Permits	370,485.00-	88,542.75-	281,942.25-	24	391,000.00-	99,753.25-	291,246.75-	26
* Licenses and Permits	370,485.00-	88,542.75-	281,942.25-	24	391,000.00-	99,753.25-	291,246.75-	26
431100 Federal Grants	686,099.00-	97,408.93-	588,690.07-	14	686,099.00-	98,268.44-	587,830.56-	14
431105 Federal Grants - Indirect		4,324.07-	4,324.07-			4,507.56-	4,507.56	
432100 State Grants					140,000.00-	140,000.00-		100
* 432311 Pol CtrI 455B.830	297,006.07-	79,550.00-	217,456.07-	27	290,140.86-	77,725.00-	212,415.86-	27
* Intergovernmental	983,105.07-	181,283.00-	801,822.07-	18	1,116,239.86-	320,501.00-	795,738.86-	29
460513 Other Health Service Charges					701.00-	701.00-	701.00	
460526 Plan Review-Air Quality	25,000.00-	11,008.00-	13,992.00-	44	11,270.00-	6,800.00-	4,470.00-	60
460527 NOE-AQM	76,000.00-	34,608.00-	41,392.00-	46	40,000.00-	29,660.00-	10,340.00-	74
460528 NESHAP-AQM	66,000.00-	24,374.00-	41,626.00-	37	62,000.00-	25,205.00-	36,795.00-	41
460529 Assessments-AQM	28,000.00-	12,978.00-	15,022.00-	46	21,000.00-	9,660.00-	11,340.00-	46
460530 Inspector Registr-AQ	3,115.00-	2,670.00-	445.00-	86	1,900.00-	3,395.00-	1,495.00	179
460531 Dust Plan-Air Quality	165,000.00-	35,940.00-	129,060.00-	22	165,000.00-	47,712.00-	117,288.00-	29
* Charges for Services	363,115.00-	121,578.00-	241,537.00-	33	301,170.00-	123,133.00-	178,037.00-	41
485100 Reimbursements		150.00-	150.00-					
* Miscellaneous		150.00-	150.00-					
** Revenue	1,716,705.07-	391,553.75-	1,325,151.32-	23	1,808,409.86-	543,387.25-	1,265,022.61-	30
701110 Base Salaries	1,292,212.29	372,046.74	920,165.55	29	1,368,978.42	428,869.73	940,108.69	31
701130 Pooled Positions	18,000.00	2,927.57	15,072.43	16	18,000.00	7,124.63	10,875.37	40
701200 Incentive Longevity	22,400.00	251.54	22,148.46	1	23,000.00	575.02	22,424.98	3
701300 Overtime	7,599.56	1,445.67	6,153.89	19	6,576.10	1,794.43	4,781.67	27
701413 Vac Payoff/Sick Pay-Term			38,584.09			42,911.41	42,911.41-	
701417 Comp Time			5,358.86			11,850.01	11,850.01-	
* Salaries and Wages	1,340,211.85	420,614.47	919,597.38	31	1,416,554.52	493,125.23	923,429.29	35
705100 Group Insurance	177,040.72	50,783.60	126,257.12	29	175,898.81	54,705.55	121,193.26	31
705199 Lab Cost Sav-Benef		267.60	267.60					
705210 Retirement	305,669.98	87,158.70	218,511.28	29	299,272.94	92,184.81	207,088.13	31
705230 Medicare April 1986	18,443.93	5,558.46	12,885.47	30	18,558.58	6,576.79	11,981.79	35
705320 Workmens Comp	7,543.80	2,514.60	5,029.20	33	5,740.00	1,913.32	3,826.68	33
705330 Unemply Comp	1,782.00		1,782.00		3,520.00	586.66	2,933.34	17
* Employee Benefits	510,480.43	145,747.76	364,732.67	29	502,990.33	155,967.13	347,023.20	31
710100 Professional Services	133,767.94	11,217.00-	144,984.94	8-	205,628.23	24,242.91	181,385.32	12
710105 Medical Services		323.50	992.50	25		628.00	628.00-	
710110 Contracted/Temp Services	1,316.00				40,000.00		40,000.00	
710200 Service Contract	500.00		500.00		350.00	51.62	298.38	15
710205 Repairs and Maintenance	11,730.00	449.01	11,280.99	4	7,000.00	4,097.33	2,902.67	59
710300 Operating Supplies	8,600.00	3,745.14	4,854.86	44	9,100.00	1,790.86	7,309.14	20
710334 Copy Machine Expense	4,400.00	1,263.02	3,136.98	29	4,400.00	1,130.78	3,269.22	26
710350 Office Supplies	4,000.00	1,432.45	2,567.55	36	4,000.00	3,315.76	684.24	83
710355 Books and Subscriptions	224.00	224.37	0.37-	100	224.00	213.82	10.18	95
710360 Postage	2,900.00	972.71	1,927.29	34	2,200.00	917.86	1,282.14	42
710361 Express and Courier	175.00	41.83	133.17	24	200.00	31.85	168.15	16
710500 Other Expense	100.00	2,957.82	2,857.82-	2,958	200.00	50.00	150.00	25
710502 Printing	800.00	156.29	643.71	20	1,000.00	413.33	586.67	41

Accounts	2012 Plan	2012 Actuals	Balance	Act%	2011 Plan	2011 Actual	Balance	Act%
710503 Licenses & Permits	135.00		135.00		90.00		90.00	
710505 Rental Equipment	1,800.00		1,800.00		1,800.00		1,800.00	
710507 Network and Data Lines		1,845.00	1,845.00-					
710508 Telephone Land Lines	6,500.00	1,388.09	5,111.91	21	7,000.00	1,523.66	5,476.34	22
710509 Seminars and Meetings	5,000.00	300.00	4,700.00	6	5,000.00	1,195.00	3,805.00	24
710512 Auto Expense	1,000.00	166.53	833.47	17	1,200.00	92.00	1,108.00	8
710519 Cellular Phone	4,700.00	1,114.83	3,585.17	24	3,800.00	1,524.83	2,275.17	40
710529 Dues	435.00		435.00		435.00		435.00	
710535 Credit Card Fees	1,500.00	592.12	907.88	39	1,500.00	316.05	1,183.95	21
710546 Advertising	1,000.00	23,306.36	22,306.36-	2,331	1,000.00	165.33	834.67	17
710577 Uniforms & Special Clothing	1,100.00		1,100.00		1,100.00		1,100.00	
710721 Outpatient								
711100 ESD Asset Management	2,808.00	936.00	1,872.00	33	1,316.00	1,110.00	1,316.00	39
711113 Equip Srv Replace	13,719.96	4,973.10	8,746.86	36	2,880.00	4,613.00	1,770.00	60
711114 Equip Srv O & M	12,963.22	2,922.99	10,040.23	23	7,677.51	3,362.83	3,064.51	24
711115 Equip Srv Motor Pool					13,966.50		10,603.67	
711117 ESD Fuel Charge	10,520.54	4,226.86	6,293.68	40	11,125.62	325.00	325.00-	33
711119 Prop & Liab Billings	9,246.60	3,082.20	6,164.40	33	7,600.00	3,623.15	7,502.47	33
711210 Travel	21,000.00	492.25	20,507.75	2	28,500.00	2,533.32	5,066.68	12
711504 Equipment nonCapital	14,000.00	24,391.86	10,391.86-	174	14,000.00	3,359.80	25,140.20	82
* Services and Supplies	275,941.26	70,087.33	205,853.93	25	384,292.86	11,539.37	2,460.63	19
781004 Equipment Capital	118,000.00	116,338.60	1,661.40	99	92,697.72	72,167.46	312,125.40	47
* Capital Outlay	118,000.00	116,338.60	1,661.40	99	92,697.72	43,283.58	49,414.14	47
** Expenses	2,244,633.54	752,788.16	1,491,845.38	34	2,396,535.43	764,543.40	1,631,992.03	32
*** Total	527,928.47	361,234.41	166,694.06	68	588,125.57	221,156.15	366,969.42	38

Washoe County Health District
 Community and Clinical Health Services
 Pds 1-4, FY 2012

Accounts	2012 Plan	2012 Actuals	Balance	Act%	2011 Plan	2011 Actual	Balance	Act%
431100 Federal Grants	2,135,941.00-	423,112.20-	1,712,828.80-	20	2,364,508.70-	436,740.74-	1,927,767.96-	18
431105 Federal Grants - Indirect		2,107.91-	2,107.91			7,203.40-	7,203.40	
432100 State Grants	153,327.00-	7,022.30-	146,304.70-	5	255,737.42-	32,470.34-	223,267.08-	13
* Intergovernmental	2,289,268.00-	432,242.41-	1,857,025.59-	19	2,620,246.12-	476,414.48-	2,143,831.64-	18
460500 Other Immunizations	89,000.00-	27,003.73-	61,996.27-	30	85,000.00-	31,445.44-	53,554.56-	37
460501 Medicaid Clinical Services	40,300.00-	12,531.58-	27,768.42-	31	32,000.00-	16,550.25-	15,449.75-	52
460503 Childhood Immunizations	59,000.00-	12,851.54-	46,148.46-	22	140,000.00-	26,822.50-	113,177.50-	19
460508 Tuberculosis	6,250.00-	1,272.09-	4,977.91-	20	7,000.00-	2,578.33-	4,421.67-	37
460515 Medicare Reimbursement	300.00-		300.00-		500.00-	50.00-	450.00-	10
460516 Pgm Inc-3rd Prty Rec	4,750.00-	8,163.93-	3,413.93	172	6,500.00-	1,581.32-	4,918.68-	24
460517 Influenza Immunization	7,000.00-	1,577.00-	5,423.00-	23	12,000.00-	1,730.00-	10,270.00-	14
460518 STD Fees	28,000.00-	7,685.58-	20,314.42-	27	30,000.00-	10,120.72-	19,879.28-	34
460524 Family Planning	44,000.00-	10,478.62-	33,521.38-	24	66,000.00-	15,705.49-	50,294.51-	24
460570 Education Revenue	11,000.00-	2,030.00-	8,970.00-	18	11,000.00-	4,070.00-	6,930.00-	37
* Charges for Services	289,600.00-	83,594.07-	206,005.93-	29	390,000.00-	110,654.05-	279,345.95-	28
484050 Donations Federal Pgm Income	41,450.00-	15,768.37-	25,681.63-	38		13,516.08-	13,516.08	
* Miscellaneous	41,450.00-	15,768.37-	25,681.63-	38		13,516.08-	13,516.08	
** Revenue	2,620,318.00-	531,604.85-	2,088,713.15-	20	3,010,246.12-	600,584.61-	2,409,661.51-	20
701110 Base Salaries	2,290,226.58	706,212.72	1,584,013.86	31	2,598,654.20	805,418.57	1,793,235.63	31
701120 Part Time	518,071.35	174,382.81	343,688.54	34	573,266.06	181,555.99	391,710.07	32
701130 Pooled Positions	146,343.08	58,819.11	87,523.97	40	168,345.03	65,782.06	102,562.97	39
701200 Incentive Longevity	44,097.00	46.16	44,050.84	0	52,628.00	182.70	52,445.30	0
701300 Overtime	8,606.69	21.75-	8,628.44	0-	300.00	3,163.20	2,863.20-	1,054
701412 Salary Adjustment	9,642.61-		9,642.61-		175,244.98-		175,244.98-	
701413 Vac Payoff/Sick Pay-Term		9,289.66	9,289.66-			1,424.06	1,424.06-	
701417 Comp Time		2,423.57	2,423.57-			176.13	176.13-	
701500 Merit Awards								
* Salaries and Wages	2,997,702.09	951,152.28	2,046,549.81	32	3,270,950.84	1,057,702.71	2,213,248.13	32
705110 Group Insurance	433,145.91	123,574.99	309,570.92	29	473,252.59	135,519.19	337,733.40	29
705199 Lab Cost Sav-Benef		292.60-	292.60-					
705210 Retirement	670,286.51	207,498.76	462,787.75	31	695,312.38	213,092.67	482,219.71	31
705230 Medicare April 1986	37,606.78	12,046.25	25,560.53	32	42,923.94	13,721.39	29,202.55	32
705320 Workmens Comp	17,766.03	10,675.60	7,090.43	60	17,220.00	5,740.04	11,479.96	33
705330 Unemply Comp	4,196.70		4,196.70		10,560.00	1,760.02	8,799.98	17
* Employee Benefits	1,163,001.93	353,503.00	809,498.93	30	1,239,268.91	369,833.31	869,435.60	30
710100 Professional Services	117,760.33	12,930.40	104,829.93	11	99,458.00	30,240.32	69,217.68	30
710105 Medical Services	600.00	14.00	586.00	2	600.00	75.50	524.50	13
710108 MD Consultants	48,900.00	10,325.00	38,575.00	21	48,900.00	14,437.50	34,462.50	30
710110 Contracted/Temp Services	2,555.00	2,355.85	199.15	92	3,355.00	3,355.00	3,355.00	30
710119 Subcontract Payments	186,242.00	37,639.59	148,602.41	20	186,242.00	46,599.14	139,642.86	25
710200 Service Contract	4,138.00	2,407.78	1,730.22	58	4,395.00	3,469.27	925.73	79
710205 Repairs and Maintenance	5,710.00	1,017.89	4,692.11	18	6,786.00	297.63	6,488.37	4
710300 Operating Supplies	68,539.00	26,749.50	41,789.50	39	61,200.00	15,919.26	45,280.74	26
710334 Copy Machine Expense	13,775.00	2,838.91	10,936.09	21	12,310.00	3,787.00	8,523.00	31
710350 Office Supplies	11,877.01	1,553.95	10,323.06	13	9,720.01	3,178.73	6,541.28	33

Accounts	2012 Plan	2012 Actuals	Balance	Act%	2011 Plan	2011 Actual	Balance	Act%
710355 Books and Subscriptions	1,200.00	630.00	570.00	53	1,900.00	174.90	1,725.10	9
710360 Postage	4,740.00	1,483.24	3,256.76	31	4,840.00	1,677.17	3,162.83	35
710361 Express and Courier	320.00	35.99	284.01	11	290.00	75.08	214.92	26
710500 Other Expense	14,288.31	1,632.32	12,655.99	11	19,131.67	3,445.90	15,685.77	18
710502 Printing	6,277.00	1,256.40	5,020.60	20	6,060.00	2,652.46	3,407.54	44
710503 Licenses & Permits	3,325.00	285.00	3,040.00	9	2,150.00	1,475.00	675.00	69
710507 Network and Data Lines	2,280.00	1,246.66	1,033.34	55	2,280.00	807.30	1,472.70	35
710508 Telephone Land Lines	13,394.00	4,048.12	9,345.88	30	14,580.00	4,531.94	10,048.06	31
710509 Seminars and Meetings	6,600.00	2,750.00	3,850.00	42	7,550.00	5,425.00	2,125.00	72
710512 Auto Expense	13,043.00	2,766.30	10,276.70	21	11,057.00	3,325.73	7,731.27	30
710519 Cellular Phone	540.00	119.96	420.04	22	505.00	177.91	327.09	35
710529 Dues	1,350.00	300.00	1,050.00	22	1,100.00	1,050.00	50.00	95
710535 Credit Card Fees	3,730.00	878.62	2,851.38	24	4,245.00	1,015.92	3,229.08	24
710546 Advertising	25,804.52	17,240.99	8,563.53	67	24,264.70	17,122.75	7,141.95	71
710577 Uniforms & Special Clothing	350.00		350.00		650.00		650.00	
710703 Biologicals	224,246.00	40,091.85	184,154.15	18	308,879.00	39,565.63	269,313.37	13
710714 Referral Services					11,300.00		11,300.00	
710721 Outpatient	95,264.00	2,224.72	93,039.28	2	117,933.97	4,704.25	113,229.72	4
710872 Food Purchases	3,026.00	149.37	2,876.63	5	2,851.00	796.88	2,054.12	28
711010 Utilities	1,700.00		1,700.00		1,000.00		1,000.00	
711100 ESD Asset Management					360.00	30.00	330.00	8
711113 Equip Srv Replace					1,047.46	28.65	1,018.81	3
711114 Equip Srv O & M					472.80		472.80	
711115 Equip Srv Motor Pool		132.50	132.50		1,125.00	350.00	775.00	31
711117 ESD Fuel Charge						250.49	250.49	
711119 Prop & Liab Billings	21,776.21	7,258.72	14,517.49	33	22,800.00	7,600.00	15,200.00	33
711210 Travel	27,781.00	4,640.76	23,140.24	17	36,672.53	7,287.44	29,385.09	20
711504 Equipment nonCapital	4,408.00		4,408.00		4,876.00	312.65	4,563.35	6
* Services and Supplies	935,539.38	187,004.39	748,534.99	20	1,042,887.14	221,887.40	820,999.74	21
** Expenses	5,096,243.40	1,491,659.67	3,604,583.73	29	5,553,106.89	1,649,423.42	3,903,683.47	30
*** Total	2,475,925.40	960,054.82	1,515,870.58	39	2,542,860.77	1,048,838.81	1,494,021.96	41

Accounts	2012 Plan	2012 Actuals	Balance	Act%	2011 Plan	2011 Actual	Balance	Act%
422503 Environmental Permits	46,900.00-	14,972.00-	31,928.00-	32	43,000.00-	15,287.00-	27,733.00-	36
422504 Pool Permits	63,000.00-	9,018.00-	53,982.00-	14	63,000.00-	7,594.00-	55,406.00-	12
422505 RV Permits	9,700.00-	2,872.00-	6,828.00-	30	10,500.00-	2,738.00-	7,762.00-	26
422507 Food Service Permits	342,000.00-	100,715.00-	241,285.00-	29	342,000.00-	102,463.00-	239,537.00-	30
422508 Wat Well Const Perm	27,000.00-	4,701.00-	22,299.00-	17	34,500.00-	10,436.00-	24,064.00-	30
422509 Water Company Permits	3,500.00-	702.00-	2,798.00-	20	4,000.00-	468.00-	3,532.00-	12
422511 ISDS Permits	47,000.00-	21,406.00-	25,594.00-	46	47,000.00-	23,148.00-	23,852.00-	49
422513 Special Event Permits	74,000.00-	39,061.00-	34,939.00-	53	70,500.00-	38,696.00-	31,804.00-	55
422514 Initial Applic Fee	25,000.00-	7,130.00-	17,870.00-	29	35,000.00-	7,120.00-	27,880.00-	20
* Licenses and Permits	638,100.00-	200,577.00-	437,523.00-	31	649,500.00-	207,930.00-	441,570.00-	32
431100 Federal Grants	277,000.00-	69,665.66-	207,334.34-	25	311,029.78-	71,100.72-	239,929.06-	23
432100 State Grants	75,000.00-	18,750.00-	56,250.00-	25	75,000.00-	18,000.00-	57,000.00-	24
432310 Tire Fee NRS 444A.090	452,000.00-	222,991.65-	229,008.35-	49	370,535.00-	226,129.72-	144,405.28-	61
* Intergovernmental	804,000.00-	311,407.31-	492,592.69-	39	756,564.78-	315,230.44-	441,334.34-	42
460509 Water Quality						144.00-	144.00-	
460510 IT Overlay	96,800.00-	29,808.00-	66,992.00-	31	111,000.00-	30,727.00-	80,273.00-	28
460512 Duplication Service Fees		6.70-	6.70-			548.83-	548.83-	
460513 Other Health Service Charges	2,700.00-	394.00-	2,306.00-	15	2,700.00-	4,120.25-	1,420.25-	153
460514 Food Service Certification	9,000.00-	5,203.00-	3,797.00-	58	8,000.00-	4,539.00-	3,461.00-	57
460520 Eng Serv Health	42,000.00-	9,943.00-	32,057.00-	24	55,000.00-	15,392.00-	39,608.00-	28
460521 Plan Review - Pools & Spas	2,500.00-	1,907.00-	593.00-	76	2,500.00-	2,761.00-	261.00-	110
460523 Plan Review - Food Services	17,000.00-	5,873.00-	11,127.00-	35	17,000.00-	9,300.15-	7,699.85-	55
460525 Plan Review - Vector	24,000.00-	9,620.00-	14,380.00-	40	24,000.00-	12,693.00-	11,307.00-	53
460533 Quick Start		87.00-	87.00-			29.00-	29.00-	
460534 Child Care Inspection	8,000.00-	2,967.00-	5,033.00-	37	8,300.00-	3,795.00-	4,505.00-	46
460535 Pub Accomod Inspectn	16,000.00-	4,865.00-	11,135.00-	30	17,000.00-	4,838.00-	12,162.00-	28
460570 Education Revenue	2,400.00-	680.00-	1,720.00-	28	2,400.00-	912.00-	1,488.00-	38
* Charges for Services	220,400.00-	71,353.70-	149,046.30-	32	247,900.00-	89,799.23-	158,100.77-	36
** Revenue	1,662,500.00-	583,338.01-	1,079,161.99-	35	1,653,964.78-	612,959.67-	1,041,005.11-	37
701110 Base Salaries	2,981,274.44	949,430.53	2,031,843.91	32	3,313,782.63	950,990.66	2,362,791.97	29
701130 Pooled Positions	103,247.00	57,167.61	46,079.39	55	113,422.64	64,535.03	48,887.61	57
701140 Holiday Work	1,200.00	985.16	214.84	82	1,200.00	319.32	880.68	27
701200 Incentive Longevity	53,100.00	288.46	52,811.54	1	48,750.00	22,374.95	48,750.00	66
701300 Overtime	34,000.00	17,538.56	16,461.44	52	33,788.00	11,413.05	11,413.05	38
701406 Standby Pay		5,427.32	5,427.32		30,000.00	11,265.18	18,734.82	38
701408 Call Back	3,000.00	376.24	2,623.76	13	3,000.00	1,197.82	1,802.18	40
701413 Vac Payoff/Sick Pay-Term		31,628.55	31,628.55-					
701417 Comp Time		280.89	280.89-					
701500 Merit Awards	92,818.62-		92,818.62-		173,177.76-		173,177.76-	
* Salaries and Wages	3,083,002.82	1,063,123.32	2,019,879.50	34	3,370,765.51	1,050,682.96	2,320,082.55	31
705110 Group Insurance	454,634.94	143,730.85	310,904.09	32	496,011.19	146,320.78	349,690.41	29
705199 Lab Cost Sav-Benef		292.60-	292.60-					
705210 Retirement	709,981.00	223,552.58	486,428.42	31	724,004.28	206,661.40	517,342.88	29
705230 Medicare April 1986	40,395.20	13,585.86	26,809.34	34	43,660.48	13,447.18	30,213.30	31
705320 Workmens Comp	18,966.18	6,322.08	12,644.10	33	16,072.00	5,357.36	10,714.64	33

Accounts	2012 Plan	2012 Actuals	Balance	Act%	2011 Plan	2011 Actual	Balance	Act%
705330 Unemploy Comp	4,480.20		4,480.20		9,856.00	1,642.68	8,213.32	17
* Employee Benefits	1,228,457.52	386,898.77	841,558.75	31	1,289,603.95	373,429.40	916,174.55	29
710100 Professional Services	490,885.57	4,750.00	486,135.57	1	257,890.90	4,822.00	253,068.90	2
710105 Medical Services	6,548.00	419.50	6,128.50	6	6,548.00	147.50	6,400.50	2
710110 Contracted/Temp Services	55,225.00	6,333.91	48,891.09	11	29,194.00	7,458.55	21,735.45	26
710200 Service Contract	60,300.00	43,863.85	16,436.15	73	59,800.00	10,868.74	48,931.26	18
710205 Repairs and Maintenance	1,100.00	654.95	445.05	60	1,000.00	1,055.54	55.54	106
710300 Operating Supplies	20,100.00	2,265.09	17,834.91	11	22,225.00	2,953.11	19,271.89	13
710302 Small Tools & Allow	1,685.00		1,685.00		2,185.00	325.50	1,859.50	15
710308 Animal Supplies	2,000.00	323.75	1,676.25	16	2,000.00		2,000.00	
710319 Chemical Supplies	281,950.00	265,391.74	16,558.26	94	321,741.00	321,290.65	450.35	100
710334 Copy Machine Expense	2,250.00	567.11	1,682.89	25	930.00	227.70	702.30	24
710350 Office Supplies	9,500.00	2,483.29	7,016.71	26	10,000.00	2,929.91	7,070.09	29
710355 Books and Subscriptions	2,400.00	632.95	1,767.05	26	5,400.00	125.00	5,275.00	2
710360 Postage	9,300.00	2,249.26	7,050.74	24	7,800.00	2,592.61	5,207.39	33
710361 Express and Courier	175.00	10.56	164.44	6	225.00	70.58	154.42	31
710391 Fuel & Lube	100.00		100.00		100.00		100.00	
710500 Other Expense	5,800.00	304.00	5,496.00	5	5,800.00	734.27	5,065.73	13
710502 Printing	4,025.00	1,033.07	2,991.93	26	3,925.00	909.50	3,015.50	23
710503 Licenses & Permits	2,590.00		2,590.00		2,335.00	365.00	1,970.00	16
710506 Dept Insurance Deductible		150.00	150.00			150.00	150.00	
710507 Network and Data Lines	2,500.00	799.80	1,700.20	32	2,700.00	807.30	1,892.70	30
710508 Telephone Land Lines	9,375.00	2,968.44	6,406.56	32	10,800.00	3,035.58	7,764.42	28
710509 Seminars and Meetings	9,240.00	4,120.00	5,120.00	45	16,585.00	4,070.00	12,515.00	25
710512 Auto Expense	4,450.00	39.56	4,410.44	1	200.00		200.00	
710514 Regulatory Assessments						27.99		
710519 Cellular Phone	7,450.00	1,517.88	5,932.12	20	8,455.00	2,445.88	6,009.12	29
710529 Dues	1,661.00	368.00	1,293.00	22	1,726.00	639.00	1,087.00	37
710535 Credit Card Fees	3,965.00	1,248.68	2,716.32	31	4,000.00	1,292.46	2,707.54	32
710546 Advertising	1,050.00	1,608.53	558.53	153	1,050.00	255.05	794.95	24
710577 Uniforms & Special Clothing	1,700.00		1,700.00		1,700.00		1,700.00	
710585 Undesignated Budget	78,700.00		78,700.00					
710600 LT Lease-Office Space	41,651.00	16,850.00	24,801.00	40	40,636.89	16,853.30	23,783.59	41
711100 ESD Asset Management	11,232.00	4,212.00	7,020.00	38	18,000.00	4,620.00	13,380.00	26
711113 Equip Srv Replace	29,926.32	10,185.88	19,740.44	34	33,221.21	9,926.83	23,294.38	30
711114 Equip Srv O & M	40,610.32	13,612.01	26,998.31	34	43,396.79	15,557.15	27,839.64	36
711115 Equip Srv Motor Pool		5,596.14	5,596.14			25.00	25.00	
711117 ESD Fuel Charge	37,533.78	16,459.00	21,074.78	44	30,011.67	14,367.76	15,643.91	48
711119 Prop & Liab Billings	23,247.26	7,749.12	15,498.14	33	21,280.00	7,093.36	14,186.64	33
711210 Travel	44,650.00	10,887.83	33,762.17	24	54,677.48	12,933.66	41,743.82	24
711504 Equipment nonCapital	9,000.00	310.25	8,689.75	3	12,652.00	2,268.99	10,383.01	18
* Services and Supplies	1,313,875.25	429,966.15	883,909.10	33	1,040,190.94	453,245.47	586,945.47	44
** Expenses	5,625,335.59	1,879,988.24	3,745,347.35	33	5,700,560.40	1,877,357.83	3,823,202.57	33
*** Total	3,962,835.59	1,296,650.23	2,666,185.36	33	4,046,595.62	1,284,398.16	2,782,197.46	31

Washoe County Health District
 Epidemiology and Public Health Preparedness
 Pds 1-4, FY 2012

Accounts	2012 Plan	2012 Actuals	Balance	Act%	2011 Plan	2011 Actual	Balance	Act%
431100 Federal Grants	1,377,965.10-	403,282.33-	974,682.77-	29	1,747,372.06-	112,143.57-	1,635,228.49-	6
431105 Federal Grants - Indirect	31,837.00-	6,825.74-	25,011.26-	21	32,599.00-	1,945.00-	30,654.00-	6
* Intergovernmental	1,409,802.10-	410,108.07-	999,694.03-	29	1,779,971.06-	114,088.57-	1,665,882.49-	6
460511 Birth and Death Certificates	280,000.00-	143,573.00-	136,427.00-	51	210,000.00-	71,790.00-	138,210.00-	34
460512 Duplication Service Fees	280,000.00-	143,573.00-	136,427.00-	51	210,000.00-	72,336.21-	137,663.79-	34
* Charges for Services	1,689,802.10-	553,681.07-	1,136,121.03-	33	1,989,971.06-	186,424.78-	1,803,546.28-	9
** Revenue	1,190,512.97	347,473.56	843,039.41	29	1,196,898.32	323,195.10	873,703.22	27
701110 Base Salaries	30,500.00	198.68	198.68	0	56,350.85	3,209.22	53,141.63	6
701120 Part Time	30,500.00	101.56	30,398.44	0	30,001.99	4,372.16	25,629.83	15
701130 Pooled Positions	10,883.00	398.06	10,484.94	4	7,822.00	750.12	750.12	2
701140 Holiday Work	5,100.00	523.29	4,576.71	10	2,000.16	150.00	7,672.00	2
701200 Incentive Longevity	8,571.27	18,345.83	8,571.27	30	132,223.93	32,626.11	30,625.95-	1,631
701300 Overtime	1,245,567.24	5,832.67	5,832.67	30	1,425,297.25	20,315.33	132,223.93	27
701412 Salary Adjustment	153,167.58	372,873.65	872,693.59	33	164,455.79	45,699.64	118,756.15	28
701413 Vac Payoff/Sick Pay-Term	266,121.14	292.60	292.60	31	264,298.15	69,503.51	194,794.64	26
701417 Comp Time	15,858.58	81,544.12	184,577.02	31	997.20-	997.20-	11,945.87	31
* Salaries and Wages	6,449.30	5,218.14	10,640.44	33	17,384.95	5,439.08	11,945.87	31
705110 Group Insurance	1,513.00	2,149.80	4,299.50	33	5,166.00	1,722.00	3,444.00	33
705199 Lab Cost Sav-Benef	1,513.00	2,149.80	4,299.50	33	3,168.00	528.00	2,640.00	17
705210 Retirement	15,858.58	81,544.12	184,577.02	31	8,471.00	8,471.00	8,471.00	17
705215 Retirement Calculation	15,858.58	81,544.12	184,577.02	31	8,471.00	8,471.00	8,471.00	17
705230 Medicare April 1986	15,858.58	81,544.12	184,577.02	31	8,471.00	8,471.00	8,471.00	17
705320 Workmens Comp	1,513.00	2,149.80	4,299.50	33	5,166.00	1,722.00	3,444.00	33
705330 Unemploy Comp	1,513.00	2,149.80	4,299.50	33	3,168.00	528.00	2,640.00	17
705360 Benefit Adjustment	1,513.00	2,149.80	4,299.50	33	3,168.00	528.00	2,640.00	17
* Employee Benefits	443,109.60	139,845.49	303,264.11	32	462,943.89	122,892.23	340,051.66	27
710100 Professional Services	106,730.58	29,667.19	77,063.39	28	213,535.81	16,130.37	197,405.44	8
710105 Medical Services	100.00	100.00	100.00	100	100.00	100.00	100.00	100
710108 MD Consultants	12,000.00	2,000.00	10,000.00	17	12,000.00	2,000.00	10,000.00	17
710110 Contracted/Temp Services	30,000.00	2,000.00	30,000.00	17	43,252.22	13,436.55	29,815.67	31
710200 Service Contract	2,195.00	4,941.00	2,746.00-	225	1,620.00	1,693.05	73.05-	105
710205 Repairs and Maintenance	1,000.00	9,000.00	1,000.00	75	1,378.00	94.95	1,283.05	7
710210 Software Maintenance	12,000.00	5,201.45	3,000.00	18	12,000.00	8,785.54	12,000.00	15
710300 Operating Supplies	29,300.00	1,336.50	24,098.55	18	59,722.14	8,785.54	50,936.60	15
710325 Signs and Markers	3,149.89	495.82	1,336.50-	16	2,777.00	922.33	1,854.67	33
710334 Copy Machine Expense	7,000.00	2,008.21	2,654.07	29	10,028.42	3,110.50	6,917.92	31
710350 Office Supplies	2,510.00	446.49	4,991.79	18	2,210.00	772.74	2,210.00	25
710355 Books and Subscriptions	2,800.00	873.78	1,926.22	31	3,148.00	5.67	2,375.26	25
710360 Postage	10.00	10.00	10.00	100	10.00	5.67	5.67-	7
710361 Express and Courier	300.00	400.00	300.00	12	8,124.21	8,124.21	8,124.21	73
710500 Other Expense	3,365.00	396.00	2,965.00	79	11,851.72	8,681.31	3,170.41	73
710502 Printing	500.00	159.96	104.00	29	196.84	196.84	196.84-	15
710505 Rental Equipment	550.00	1,363.20	390.04	29	9,979.92	1,448.20	196.84-	15
710507 Network and Data Lines	4,540.00	1,363.20	3,176.80	30	9,979.92	1,448.20	8,531.72	15
710508 Telephone Land Lines	4,540.00	1,363.20	3,176.80	30	9,979.92	1,448.20	8,531.72	15

Washoe County Health District
 Epidemiology and Public Health Preparedness
 Pds 1-4, FY 2012

Accounts	2012 Plan	2012 Actuals	Balance	Act%	2011 Plan	2011 Actual	Balance	Act%
710509 Seminars and Meetings	4,700.00	175.00	4,525.00	4	3,798.00	175.00-	3,973.00	5-
710512 Auto Expense	1,125.00	390.57	734.43	35	100.00	166.76	66.76-	167
710519 Cellular Phone	2,480.00	509.48	1,970.52	21	400.00	548.99	148.99-	137
710529 Dues	590.00	330.00	260.00	56	850.00	545.00	305.00	64
710535 Credit Card Fees	1,300.00	651.36	648.64	50	800.00	406.74	393.26	51
710546 Advertising	370.00	259.50	110.50	70	1,070.00	250.00	820.00	23
710585 Undesignated Budget	31,837.00		31,837.00		3,155.00-		3,155.00-	
710703 Biologicals	3,667.79	242.00	3,425.79	7	4,146.68	24.72	4,146.68	1
710721 Outpatient	2,135.00	41.20	2,093.80	2	3,000.00		2,975.28	
710872 Food Purchases	550.00	44.89	505.11	8				
711010 Utilities	180.00		180.00					
711100 ESD Asset Management	2,808.00	832.00	1,976.00	30		780.00	780.00-	
711113 Equip Srv Replace	492.72	164.24	328.48	33		125.58	125.58-	
711114 Equip Srv O & M	3,508.44	155.80	3,352.64	4		191.06	191.06-	
711115 Equip Srv Motor Pool					200.00	130.00	70.00	65
711117 ESD Fuel Charge	157.16		157.16					
711119 Prop & Liab Billings	7,612.10	2,537.36	5,074.74	33	6,840.00	2,280.00	4,560.00	33
711210 Travel	41,950.00	1,656.24	40,293.76	4	68,924.24	1,455.78	67,468.46	2
711502 Build Imp nonCapital		127.00	127.00-					
711504 Equipment nonCapital	7,741.98	24,730.11	16,988.13-	319	50,432.37	7,912.86	42,519.51	16
* Services and Supplies	331,255.66	91,136.35	240,119.31	28	529,133.73	71,920.54	457,213.19	14
781004 Equipment Capital	193,577.12	145,876.15	47,700.97	75	230,621.00		230,621.00	
* Capital Outlay	193,577.12	145,876.15	47,700.97	75	230,621.00		230,621.00	
** Expenses	2,213,509.62	749,731.64	1,463,777.98	34	2,647,995.87	584,389.00	2,063,606.87	22
*** Total	523,707.52	196,050.57	327,656.95	37	658,024.81	397,964.22	260,060.59	60

11/17/11



WASHOE COUNTY HEALTH DISTRICT EPIDEMIOLOGY AND PUBLIC HEALTH PREPAREDNESS DIVISION



Public Health
Prevent Promote Protect

November 8, 2011

MEMORANDUM

To: Members, Washoe County District Board of Health

From: Randall L. Todd, DrPH
Epidemiology and Public Health Preparedness (EPHP) Director

Subject: Report to the District Board of Health, November 2011

Communicable Disease

- For the week ending October 29 (MMWR Week 43) five of the six participating sentinel healthcare providers for influenza surveillance reported a total of 26 patients with influenza-like-illness (ILI) out of a total of 2,955 patients seen in their practices. This represents an ILI rate of 0.9%. The regional baseline is 3.9% and compares to a national rate of 1.1% for the previous week. The national baseline is 2.4%. One death certificate was received for week 42 listing pneumonia (P) or influenza (I) as a factor contributing to the cause of death. The total number of deaths submitted for week 42 was 54. This reflects a P & I ratio of 1.9% which is below the epidemic threshold set by CDC for week 42 at 6.7%. The national P & I for week 42 was below the epidemic threshold at 6.2%.
- Due to technical difficulties at the Nevada State Health Division with the server for the National Electronic Disease Surveillance System (NEDSS) it is not possible to provide a report of any statistical aberrations in the reported communicable disease data at this time. Our staff along with staff from the Health Division and CDC are working on the problem.

Public Health Preparedness

- ASPR-Hospital Information
PHP staff participated in the November 3rd Mass Casualty Incident Plan Hot Wash for the Reno Air Race Incident.
- CDC- Public Health Preparedness
The program participated in a Statewide Training, Exercise and Planning Workshop held at the Nevada State Health Division. This workshop was planned to identify dates for public health exercises and drills required by the federal grants that fund the preparedness programs. Additional effort is being made this year to combine these efforts with other statewide public health entities to better utilize decreasing public health preparedness funds.

DBOH AGENDA ITEM # 14.A.

1001 EAST NINTH STREET / P.O. BOX 11130, RENO, NEVADA 89520 (775) 328-6190 FAX (775) 325-8130

www.washoecounty.us/health

WASHOE COUNTY IS AN EQUAL OPPORTUNITY EMPLOYER

- Exercises/Drills

The PHP program participated in a communications drill in conjunction with the Nevada State Health Division and Carson City Health and Human Services, The drill tested 800 MHz radios on the Statewide Medical Channel which allows health communication statewide through repeaters. In addition, Satellite Phone connection and communication were tested. This was a successful test. These communication drills are conducted quarterly utilizing the various modes of communication available to public health.



Randall L. Todd, DrPH, Epidemiology and Public Health Preparedness Director



Washoe County Health District

DBOH AGENDA ITEM NO. 14.B.

11/17/11



Public Health
Prevent. Promote. Protect.

November 7, 2011

TO: District Board of Health Members

FROM: Mary-Ann Brown, R.N., M.S.N. *MA*
Division Director, Community and Clinical Health Services

SUBJECT: Community and Clinical Health (CCHS) Division Report for August 2011
District Board of Health Meeting

1. Sexually Transmitted Disease Patient Delivered Partner Therapy
2. HOPES Appoints New Executive Director
3. Prematurity Awareness Month
4. Public Health Accreditation Collaborative with Southern Nevada Health District

1. Sexually Transmitted Disease (STD) Patient Delivered Partner Therapy (PDPT)

In December, 2010, the Nevada State Board of Health adopted changes to NAC 441A regulations that govern STD prevention and treatment practices in Nevada. Included was the adoption of the Centers for Disease Control (CDC's) STD Prevention Guidelines for Partner Services Treatment. Nevada NAC now allows for Patient Delivered Partner Therapy (PDPT) based on CDC guidelines which means individuals that have been diagnosed with Chlamydia or Gonorrhea can provide treatment through their clinician to their partner(s). Utilization of this treatment method has been used across the United States and has proven to be a successful tool in the prevention and control of two of the most prevalent STDs in the US, and in Washoe County.

At the end of 2010, WCHD Sexual Health program staff began working with other STD program experts across the State of Nevada on implementation of PDPT. In September the Nevada State Health Division released a Technical Bulletin promoting PDPT as a treatment option and also addressing liability concerns. Currently the WCHD Sexual Health Program is incorporating this treatment option into clinical program protocols. Staff looks forward to using this option when other, more traditional approaches, have failed.

DBOH AGENDA ITEM # 14.B.

1001 EAST NINTH STREET / P.O. BOX 11130, RENO, NEVADA 89520 (775) 328-2400 FAX (775) 328-2279

www.washoecounty.us/health

WASHOE COUNTY IS AN EQUAL OPPORTUNITY EMPLOYER
PRINTED ON RECYCLED PAPER

2. HOPES Appoints New Executive Director

In August, Northern Nevada HOPES announced the appointment of Sharon Chamberlain as Executive Director. Ms. Chamberlain has an impressive background spanning nearly 20 years in the battle against HIV/AIDS. In Oregon, she helped guide the HIV Alliance as Deputy Director, establishing one of the state's largest prevention programs including the development of the single largest needle exchange in the state and the expanding HIV care and testing services. More recently, Sharon served as Executive Director for an HIV organization prevention and care organization in Los Angeles. She was appointed by the Los Angeles Board of Supervisors to serve on the County Commission on HIV. Her commitment to the health and rights of underserved communities drives her passion for leading HOPES.

WCHD's Sexual Health Program staff had the opportunity to meet with Sharon and provide an overview of the WCHD's Sexual Health Program in September. In addition, staff conveyed the strong collaborative relationship between HOPES and WCHD.

3. Prematurity Awareness Month

November is Prematurity Awareness Month®, when the March of Dimes focuses the nation's attention on premature birth. The awareness month kicked off November 1st with the release of the 2011 Premature Birth Report Card. Nevada received a "D" grade with a premature birth rate of 13.8% (% of all live births less than 37 completed weeks gestation). In reviewing the status of selected factors contributing to premature births Nevada has had an increase in the number of uninsured woman and slight decreases in women smoking and very late preterm births. For more information the March of Dimes 2011 Premature Birth Report Card is attached.

Nevada's grade of a "D" highlights the need for the work of the Maternal Child Health and Public Health Nursing Home Visiting Team. The WCHD Pregnancy Connection program and efforts in the area of Preconception Health are effective efforts to increase pregnant woman accessing care and making choices that will support a healthy delivery. Washoe County data will be reported in a future program update.

4. Public Health Accreditation Collaborative with Southern Nevada Health District

Southern Nevada Health District (SNHD) was granted an award of \$61,995 from NACCHO to assist with Public Health accreditation efforts. SNHD has agreed to provide technical assistance to the Nevada State Health Division (NSHD) and Carson City Health & Human Services (CCHHS). Washoe County Health District has been designated as a "connector site". SNHD plans to provide all partners training in the areas of accreditation, performance management and strategic planning. SNHD will

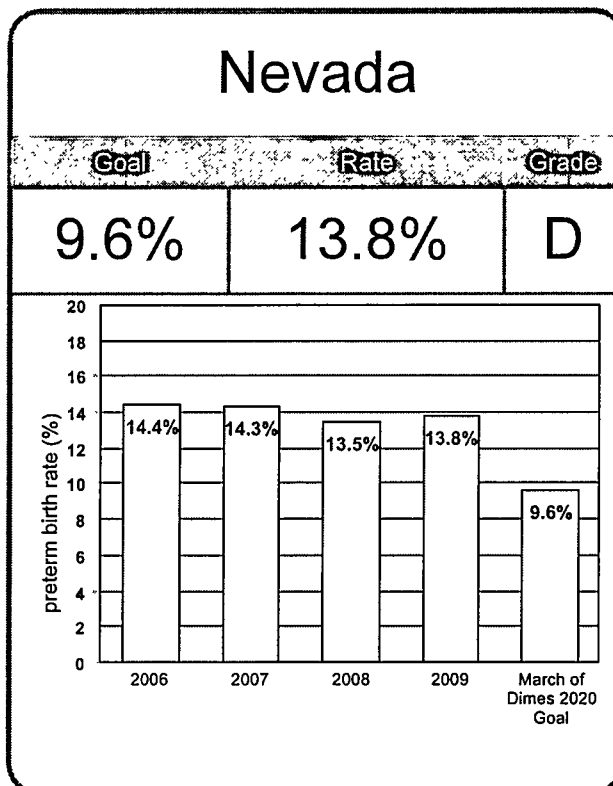
share their experience and findings including a report on “lessons learned” and suggestions for how accreditation can be achieved by smaller health departments. WCHD staff is working with Emily Brown, Performance Improvement Manager for Nevada Public Health Foundation on collaboration as a connector site with the goal of creating a long range plan for WCHD to pursue accreditation in the future. A workgroup will be formed with representation from all divisions to identify what areas of accreditation are already being addressed and areas that require improvement.



Mary-Ann Brown RN MSN
Division Director
Community and Clinical Health Services

March of Dimes 2011 Premature Birth Report Card

The March of Dimes graded states by comparing each state's rate of premature birth to the March of Dimes 2020 goal of 9.6 percent. Preterm birth is the leading cause of newborn death in the United States. We don't yet understand all the factors that contribute to premature birth. The nation must continue to make progress on research to identify causes and prevention strategies, and on interventions and quality improvement initiatives to improve outcomes.



Status of Selected Contributing Factors

Factor	Previous Rate	Latest Rate	Status	Recommendation
Uninsured Women	24.0%	26.2%	✗	Health care before and during pregnancy can help identify and manage conditions that contribute to premature birth. We urge federal and state policy-makers to accelerate implementation of health reform by expanding coverage for women of childbearing age, and we urge employers to create workplaces that support maternal and infant health.
Women Smoking	21.9%	19.8%	★	Smoking cessation programs can reduce the risk of premature birth. We urge federal and state policy-makers to immediately implement comprehensive coverage of smoking cessation provisions of health reform.
Late Preterm Birth	10.1%	10.0%	★	The rise in late-preterm births (34-36 weeks) has been linked to rising rates of early induction of labor and c-sections. We call on hospitals and health care professionals to establish quality improvement programs that ensure consistency with professional guidelines regarding c-sections and inductions prior to 39 weeks gestation.

★ = moving in the right direction n/c = no change ✗ = moving in the wrong direction

State Actions:
For information on how we are working to reduce premature birth, contact the March of Dimes Nevada Chapter at (702) 732-9255.



March of Dimes 2011 Premature Birth Report Card Technical Notes

Data Sources and Notes

Indicator	Definition	Data Sources	
		50 states and D.C.	Puerto Rico
Preterm birth (%)	Percentage of all live births less than 37 completed weeks gestation	National Center for Health Statistics (NCHS), 2009 preliminary, 2008, 2007 and 2006 final birth data	Puerto Rico Health Department, 2009 preliminary, 2008, 2007 and 2006 final birth data
Late preterm birth (%)	Percentage of all live births between 34 and 36 weeks gestation	NCHS, 2009 preliminary and 2008 final birth data	Puerto Rico Health Department, 2009 preliminary and 2008 final birth data
Uninsured women (%)	Percentage of women ages 15-44 with no source of health insurance coverage	U.S. Census Bureau, Current Population Survey, 2009-2011 (reflecting insurance status for 2008-2010 average) and 2008-2010 (for 2007-2009 average)	Percentage of women ages 18-44 with no health care coverage, Centers for Disease Control and Prevention (CDC), Behavioral Risk Factor Surveillance System (BRFSS), 2010 and 2009 data
Women smoking (%)	Percentage of women ages 18-44 who currently smoke either every day or some days and have smoked at least 100 cigarettes in her lifetime	CDC, BRFSS, 2010 and 2009 data	CDC, BRFSS, 2010 and 2009 data

Where possible, national data sources were used so that data would be consistent for each state and jurisdiction-specific premature birth report card. Therefore, data provided on the report card may differ from data obtained directly from state or local health departments and vital statistics agencies. This could be due to multiple causes. For example, as part of the Vital Statistics Cooperative Program, states are required to send NCHS natality and mortality data for a given year by a specific date. Sometimes states receive data after this date, which may result in slight differences in the rates calculated using NCHS-processed data and state-processed data. Another reason preterm birth rates, in particular, may vary could be due to differences in the way NCHS and the states calculate variables and impute missing data. Collaboration among March of Dimes chapters, state and local health departments and other local partners will provide a deeper understanding of specific contributors to preterm birth.

March of Dimes 2020 Goal

Preterm birth report card grades are based solely on the distance of a state's rate of preterm birth from the March of Dimes goal of 9.6%. The goal of 9.6% was determined by using published research to estimate the maximum achievable benefits of applying known strategies to prevent preterm birth – such as smoking cessation programs, progesterone treatments for medically eligible women, lowering the number of pregnancies from infertility treatments that result in multiples, and preventing medically unnecessary c-sections and inductions before 39 weeks of pregnancy. The new goal also expects that more women will have insurance coverage in the future, and that continued research will yield new medical advances in the next decade.

March of Dimes 2011 Premature Birth Report Card Technical Notes, continued

Grading Methodology

A score was calculated to determine how many standard deviations each jurisdiction's rate was from the goal, and a grade was assigned based on the criteria below. To determine the grade ranges, a score was calculated in 2011 using the following formula: (2009 preliminary preterm birth rate – 9.6) / standard deviation of preliminary 2009 state and D.C. preterm birth rates. Scores were rounded to one decimal place. All grade calculations conducted by the March of Dimes Perinatal Data Center.

Grade	Preterm birth rate range/Scoring criteria
A	Preterm birth rate less than or equal to 9.6% (Score less than or equal to 0)
B	Preterm birth rate greater than 9.6%, but less than 11.3% (Score greater than 0, but less than 1)
C	Preterm birth rate greater than or equal to 11.3%, but less than 12.9% (Score greater than or equal to 1, but less than 2)
D	Preterm birth rate greater than or equal to 12.9%, but less than 14.6% (Score greater than or equal to 2, but less than 3)
F	Preterm birth rate greater than or equal to 14.6% (Score greater than or equal to 3)

Selected Contributing Factors

The March of Dimes has identified and provided geographically-specific data for three "selected contributing factors": uninsured women, women smoking and late preterm births. While these important and potentially modifiable factors represent prevention opportunities for consumers, health professionals, policymakers and employers, they do not represent an exhaustive list of contributors to preterm birth. With the momentum provided by the premature birth report card, states and jurisdictions may likely identify and take action to address other potentially modifiable contributors that play important roles in the prevention of preterm birth.

Status of Contributing Factors

Rates for all contributing factors were rounded to one decimal. Under the status column, changes in rates of contributing factors between the baseline and current year were designated with either a star, an X, or n/c. A star signifying movement in the right direction was designated for a decline in the rates of contributing factors. An X signifying movement in the wrong direction was assigned for an increase in the rates of contributing factors. No change between the baseline and current year was designated with an n/c. Status of contributing factors calculations conducted by the March of Dimes Perinatal Data Center.



Washoe County Health District



Public Health
Prevent. Promote. Protect.

ENVIRONMENTAL HEALTH SERVICES DIVISION

DATE: November 8, 2011

TO: District Board of Health Members

FROM: Robert O. Sack, Division Director, Environmental Health Services (EHS)

SUBJECT: Environmental Health Services Division Report

Food Safety (Protection) Program

Food Program staff have been working in coordination with Administration and representatives from Technology Services to get our food establishment inspection reports on-line for direct public access. The project has gone smoothly and we anticipate going live by the end of the year. We hope to give a brief demonstration to the Board in the next month or two.

Special Events

Contrary to popular opinion, the special events season no longer ends with the nice weather. Staff continues to receive applications for events that are occurring in conjunction with the holidays and fundraisers. Based on the number of applications received to date, we will surpass previous years' numbers (2,000+). In addition, staff was involved with the City of Reno decision to allow the Occupy Reno movement to locate at the Moana Pool site. City of Reno and the Occupy Reno representatives wanted to avoid the conflicts that have occurred in other cities and worked cooperatively to develop a site plan. WCHD staff continues to monitor this site and address public health problems before they become serious.

Underground Storage Tank

The UST/LUST program is in the implementation phase of a project to ultimately make their records more accessible by consultants and the general public. Utilizing GIS and new hardware, staff is working to populate a database with closed, as well as open sites.

The database will provide information relative to tank location, tank type, leak detection information, etc. This project has taken considerable staff time (both WCHD and GIS) to plan. Although there have been setbacks, the final product should be very user friendly. More information is to come when we have a projected time frame to allow access to the database.

Vector-Borne Diseases Prevention Program

Attached to the Division Director's Report is the most recent results of arbovirus activity throughout the United States as reported by the Centers for Disease Control and Prevention (CDC). Data collected by the Vector program concerning mosquito infection rates, and sentinel chicken serologies, for a cadre of mosquito-borne viruses are reported to the CDC. As a member of the West Nile Virus Working Group, Vector team members have participated in statewide surveillance activities by providing mosquito trapping, identification, and preparation services in those areas of the state which have no coverage.

Robert O. Sack, Division Director
Environmental Health Services Division

Attachment (CDC Report)

DBOH AGENDA ITEM # 14.C.

1001 EAST NINTH STREET / P.O. BOX 11130, RENO, NEVADA 89520 328-2434 FAX (775) 328-6176

www.washoecounty.us/health

WASHOE COUNTY IS AN EQUAL OPPORTUNITY EMPLOYER
PRINTED ON RECYCLED PAPER

West Nile virus (WNV) and other arboviral activity -- United States, 2011
Provisional data reported to ArboNET
Tuesday, November 1, 2011

This update includes provisional data reported to ArboNET for **January 1–November 1, 2011** for nationally notifiable arboviral diseases caused by West Nile, eastern equine encephalitis, La Crosse, Powassan, and St. Louis encephalitis viruses. Dengue cases are reported in a separate update available from the CDC Dengue Branch.

West Nile virus (WNV) activity in 2011

As of November 1st, 537 counties from 48 states/districts have reported WNV activity in 2011, including 43 states/districts with reported WNV human infections (i.e., disease cases or viremic blood donors) and five additional states with reported WNV activity in non-human species only (i.e., veterinary cases, mosquito pools, dead birds, or sentinel animals) [Figures 1 and 2].

Figure 1. West Nile virus (WNV) activity reported to ArboNET, by state, United States, 2011 (as of November 1, 2011)

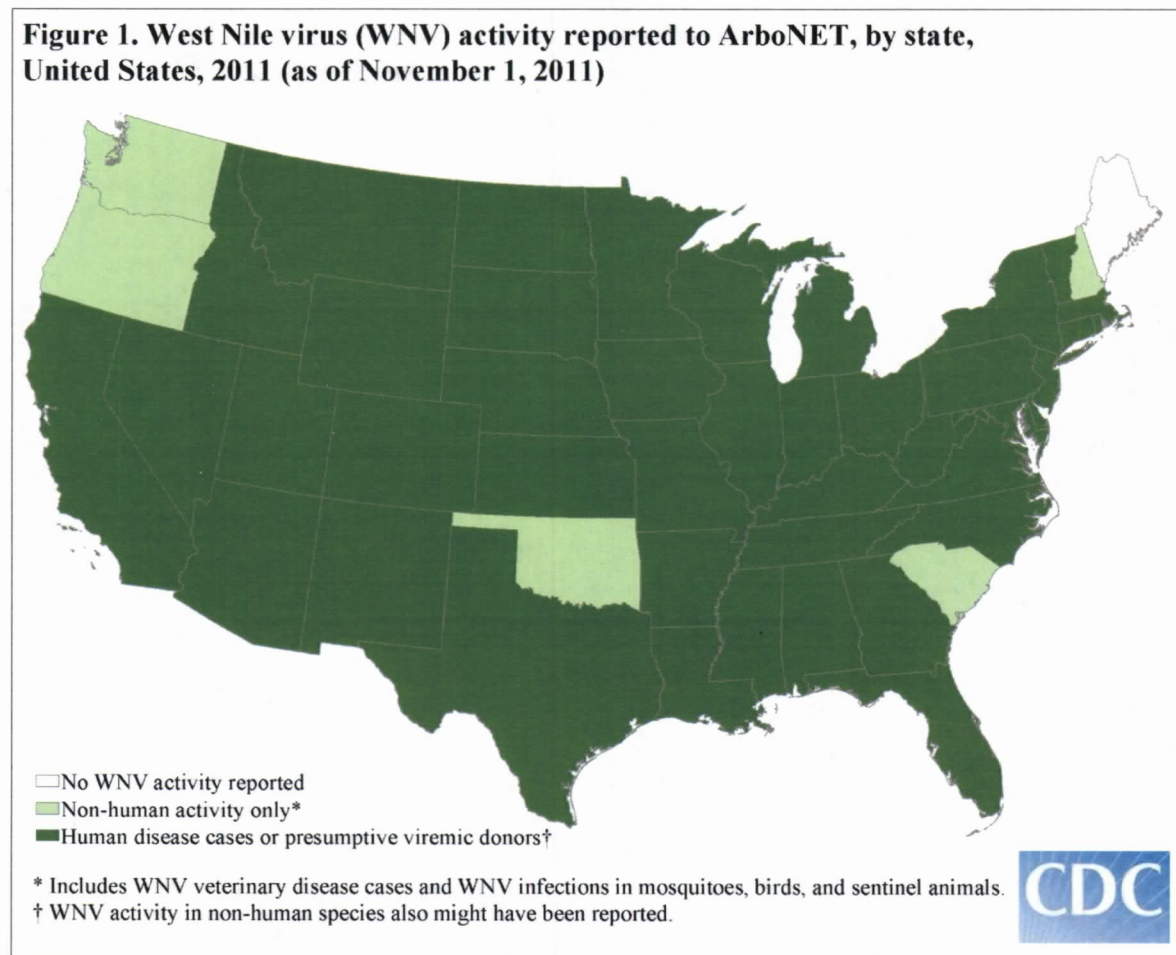
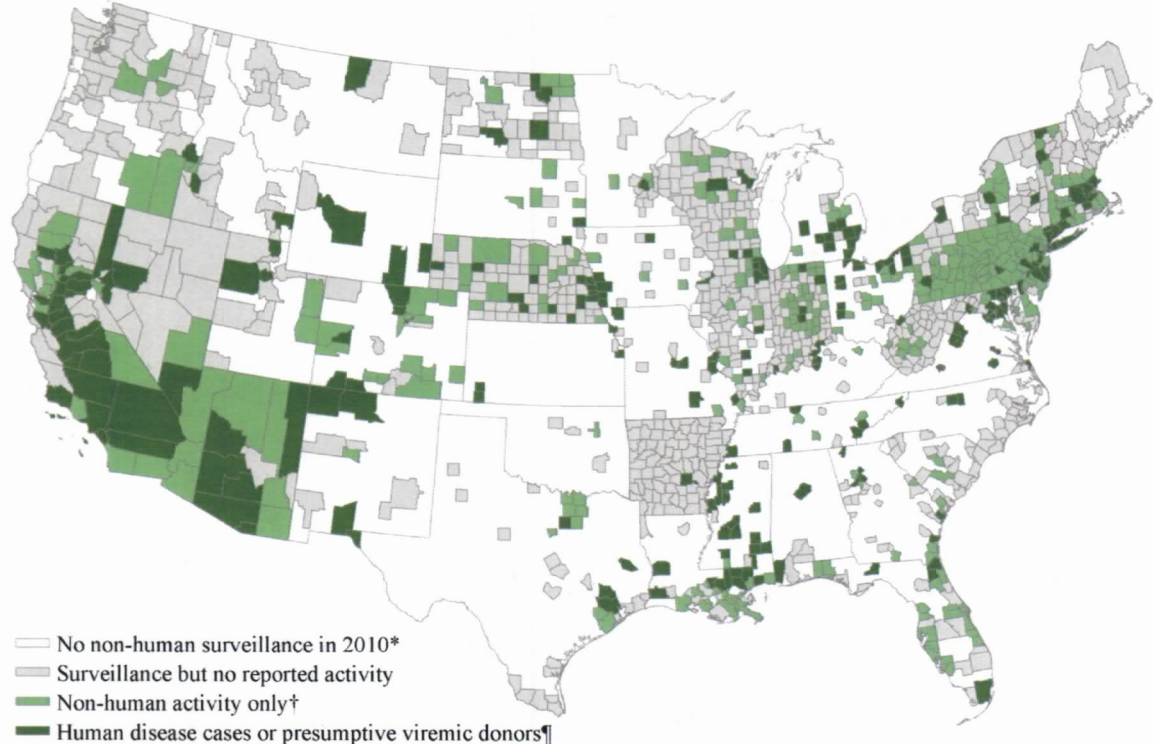




Figure 2. West Nile virus (WNV) activity reported to ArboNET, by county, United States, 2011 (as of November 1, 2011)



- No non-human surveillance in 2010*
- Surveillance but no reported activity
- Non-human activity only†
- Human disease cases or presumptive viremic donors‡

* As reported by state health departments in a survey conducted in October 2010. Surveillance for human disease and infection is performed in all counties.

† Includes WNV veterinary disease cases and WNV infections in mosquitoes, birds, and sentinel animals.

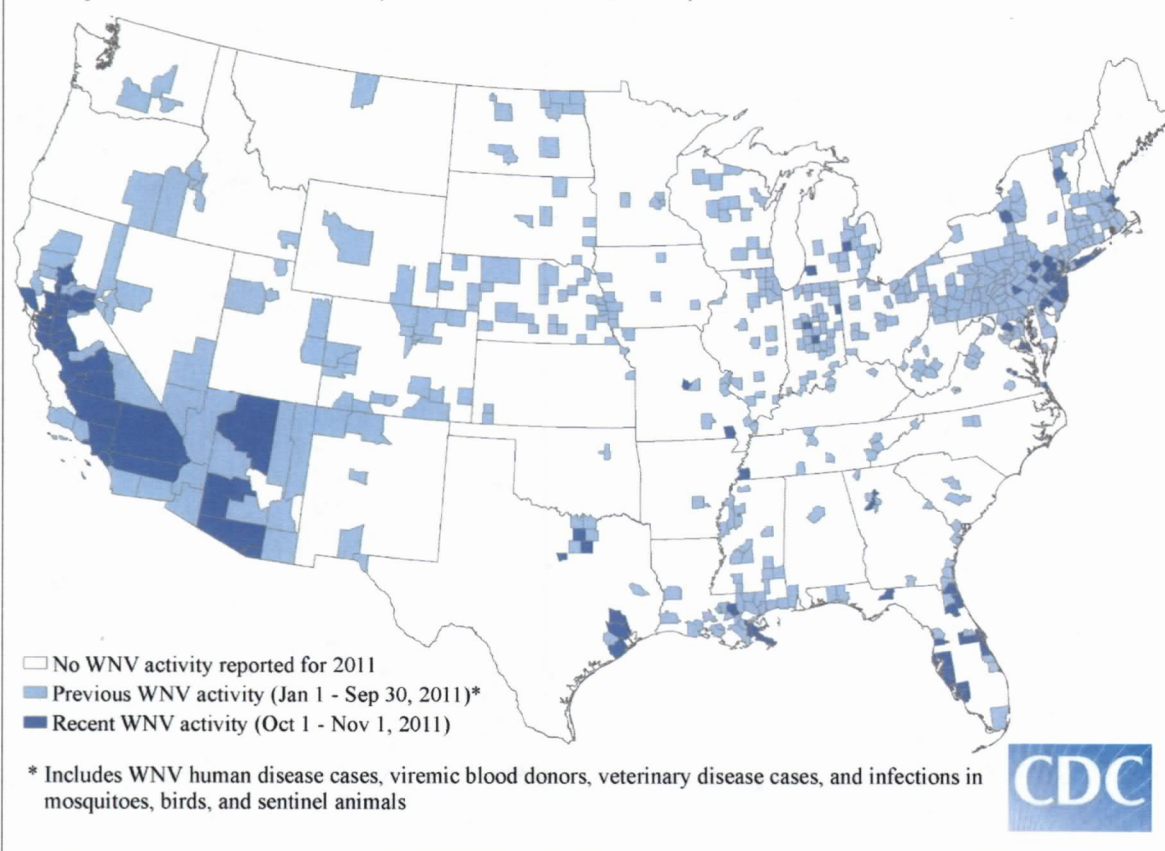
‡ WNV activity in non-human species also might have been reported.



Recent WNV activity in 2011

During the past month (October 1-November 1), WNV activity has been reported from 82 counties in 17 states [Figure 3].

Figure 3. West Nile virus (WNV) activity reported to ArboNET, by time period and county, United States, 2011 (as of November 1, 2011)



WNV human infections reported for 2011

Reported WNV disease cases

To date, 579 human cases of WNV disease have been reported from 42 states and DC [Table 1]. Of all WNV disease cases reported, 392 (68%) were classified as neuroinvasive disease (e.g., meningitis, encephalitis, acute flaccid paralysis) and 187 (32%) as non-neuroinvasive disease.

Dates of illness onset for disease cases ranged from March–October [Figure 4]. Additional demographic and clinical characteristics of reported cases are provided in Table 6 on page 10 of this report.

Estimated WNV disease cases

Based on serosurvey results, for every case of WNV neuroinvasive disease, there are an estimated 26.5 non-neuroinvasive disease cases. Using the 392 reported neuroinvasive disease cases, an estimated 10,388 non-neuroinvasive disease cases have occurred in the United States in 2011. However, only 187 were diagnosed and reported; 2% of non-neuroinvasive disease cases estimated to have occurred.

Presumptive viremic donors (PVDs)

A total of 113 WNV PVDs have been reported from 23 states [Table 1]. Of these, one (1%) of the viremic blood donors subsequently developed neuroinvasive disease and 26 (23%) subsequently developed non-neuroinvasive disease.

Comparison to 2010 data

From January 1–November 2, 2010, there were 894 human WNV disease cases (544 neuroinvasive disease cases and 350 non-neuroinvasive disease cases) and 108 PVDs reported to ArboNET.

Figure 4. West Nile virus (WNV) human disease cases reported to ArboNET by week of onset, United States, 2011 (as of 11/01/2011)

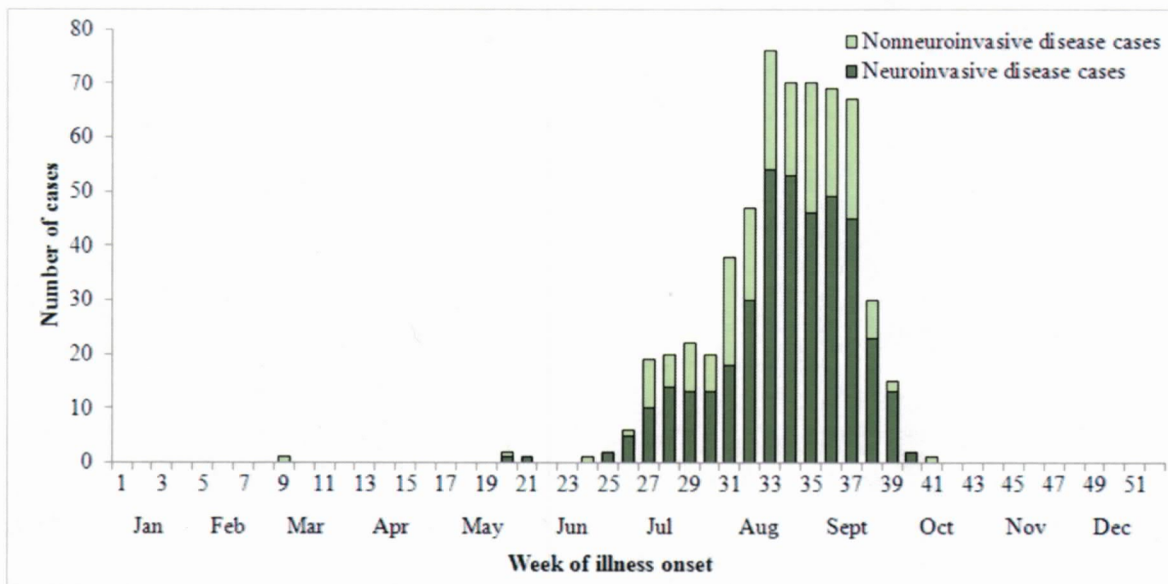




Table 1. Human West Nile virus (WNV) infections reported to ArboNET, 2011 (as of 11/01/2011)

State	Reported human disease cases			Deaths	Presumptive viremic donors (PVDs)†
	Neuroinvasive disease cases	Non-neuroinvasive disease cases	Total cases*		
Alabama	3	--¶	3	1	--
Arizona	31	10	41	4	10
Arkansas	1	--	1	--	--
California	90	39	129	5	23
Colorado	2	5	7	--	--
Connecticut	8	1	9	--	--
Delaware	1	--	1	--	--
District of Columbia	1	--	1	--	--
Florida	19	2	21	2	3
Georgia	7	5	12	3	3
Idaho	1	1	2	--	--
Illinois	20	10	30	3	3
Indiana	6	3	9	1	3
Iowa	5	4	9	--	--
Kansas	4	--	4	1	--
Kentucky	2	1	3	--	2
Louisiana	6	4	10	--	3
Maryland	10	10	20	--	3
Massachusetts	4	1	5	--	1
Michigan	32	1	33	2	1
Minnesota	1	1	2	1	--
Mississippi	26	22	48	4	8
Missouri	4	3	7	--	2
Montana	1	--	1	--	--
Nebraska	13	14	27	--	9
Nevada	12	4	16	1	3
New Jersey	2	3	5	--	1
New Mexico	4	--	4	--	2
New York	26	16	42	2	6
North Carolina	2	--	2	--	--
North Dakota	1	3	4	--	--
Ohio	9	11	20	1	9
Pennsylvania	4	1	5	1	--
Rhode Island	1	--	1	--	--
South Dakota	--	2	2	--	--
Tennessee	14	2	16	1	--
Texas	6	3	9	1	7
Utah	1	2	3	--	1
Vermont	1	--	1	--	1
Virginia	8	--	8	1	9
West Virginia	1	--	1	--	--
Wisconsin	1	1	2	--	--
Wyoming	1	2	3	--	--
Totals	392	187	579	35	113

*Includes confirmed and probable cases.

¶None reported.

†Of the 113 PVDs, 27 (24%) developed clinical illness and are also included as "Reported human disease cases".



Eastern equine encephalitis virus (EEEV) activity in 2011

As of November 1st, a total of 13 states have reported EEEV activity to ArboNET for 2011, including two states with reported human disease cases and eleven additional states with reported EEEV activity in non-human species only [Figure 5 and Table 2]. In addition, an imported human case has been reported from Missouri (infection acquired in Massachusetts). During the past month (October 1-November 1), EEEV activity has been reported from four states (Florida, Massachusetts, New Jersey, and Wisconsin).

Figure 5. Eastern equine encephalitis virus (EEEV) activity reported to ArboNET, by state, United States, 2011 (as of November 1, 2011)

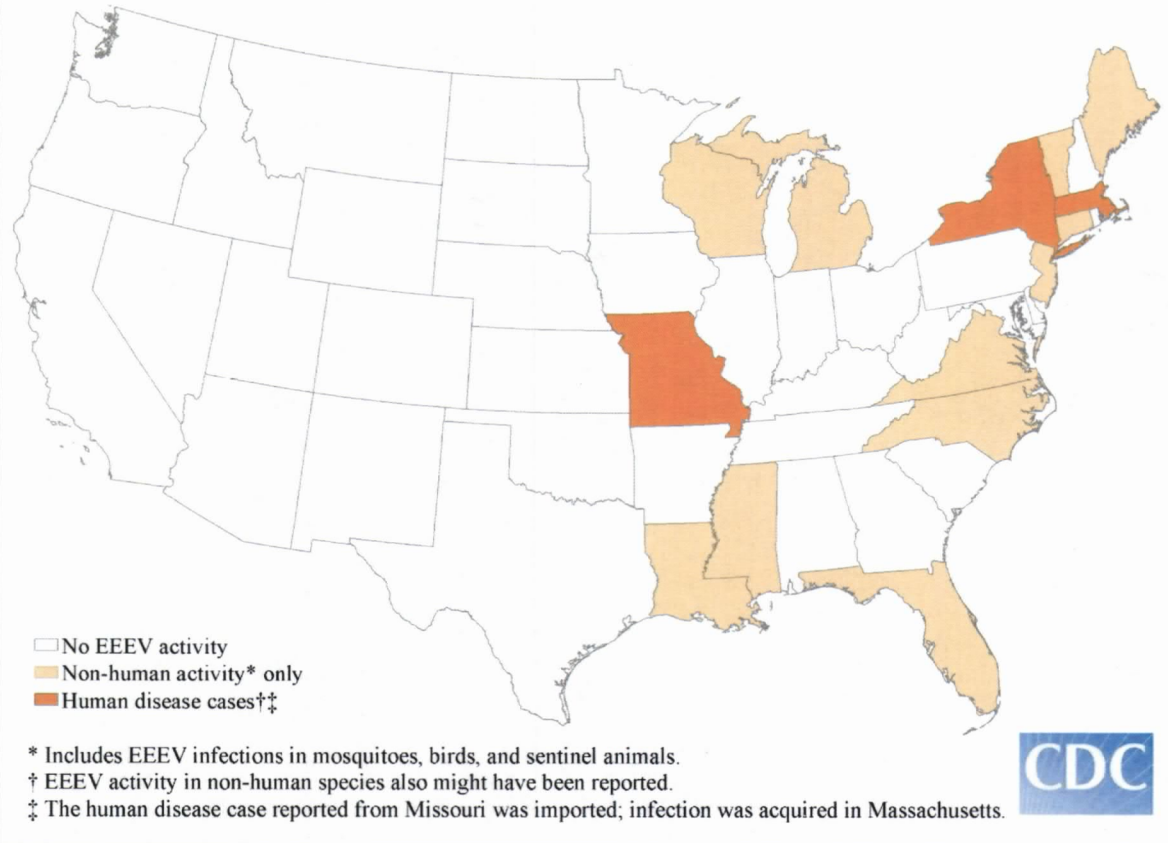


Table 2. Eastern equine encephalitis virus (EEEV) human disease cases reported to ArboNET, United States, 2011 (as of 11/01/11)

	Neuroinvasive disease cases	Nonneuroinvasive disease cases	Total cases*	Deaths
Massachusetts	1	--¶	1	1
Missouri§	1	--	1	--
New York	1	--	1	1
Totals	3	--	3	2

*Includes confirmed and probable cases.

¶None reported.

§Case is a resident of Missouri; infection was acquired in Massachusetts.

La Crosse virus (LACV) activity in 2011

As of November 1st, a total of 11 states have reported LACV activity to ArboNET for 2011, including ten states with reported human disease cases and one additional state with reported LACV activity in non-human species only [Figure 6]. During the past month (October 1-November 1), LACV activity has not been reported.

To date, 105 human cases of LACV disease have been reported [Table 3]. Demographic and clinical characteristics of reported cases are described on page 10 [Table 6].

Figure 6. La Crosse virus (LACV) activity reported to ArboNET, by state, United States, 2011 (as of November 1, 2011)

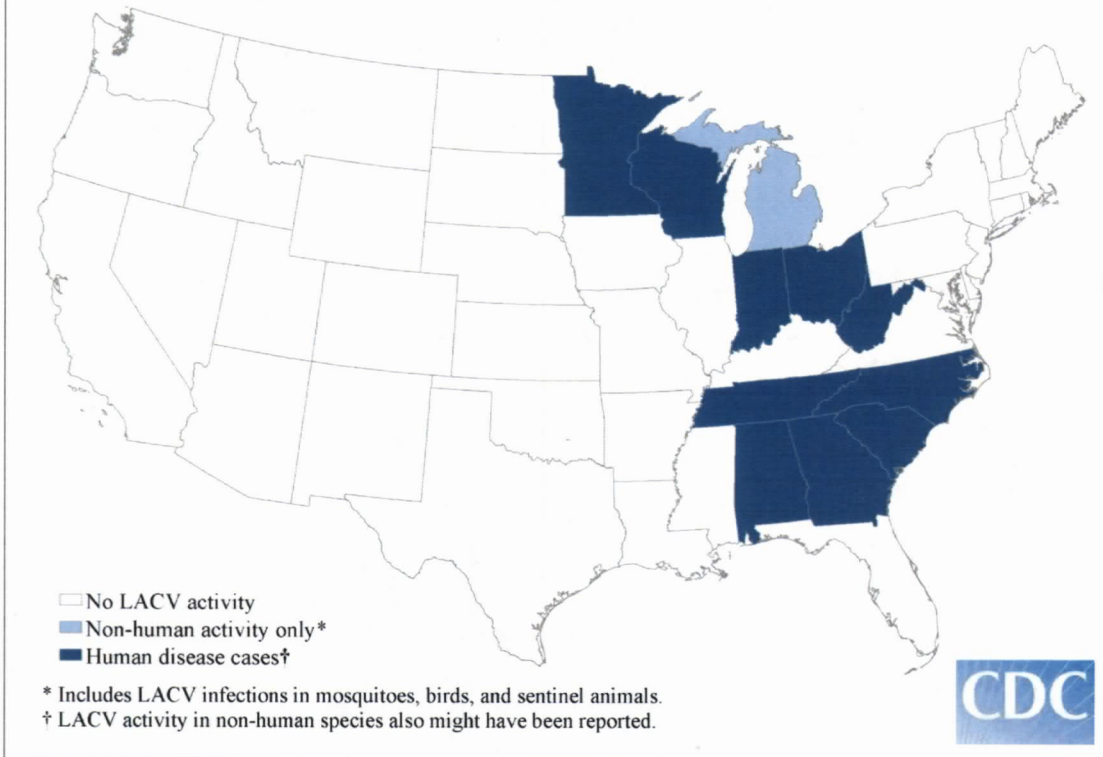


Table 3. La Crosse virus (LACV) human disease cases reported to ArboNET, United States, 2011 (as of 11/01/11)

	Neuroinvasive disease cases	Nonneuroinvasive disease cases	Total cases*	Deaths
Alabama	1	--¶	1	--
Georgia	2	--	2	--
Indiana	2	--	2	--
Minnesota	1	--	1	--
North Carolina	23	--	23	1
Ohio	33	5	38	--
South Carolina	1	--	1	--
Tennessee	12	--	12	--
West Virginia	18	3	21	--
Wisconsin	2	2	4	--
Totals	95	10	105	1

*Includes confirmed and probable cases.

¶None reported.

Powassan virus (POWV) activity in 2011

As of November 1st, three states have reported POWV activity to ArboNET for 2011; all three states reported human disease cases [Figure 7]. During the past month (October 1-November 1), POWV activity has not been reported.

To date, 13 human cases of POWV disease have been reported [Table 4]. Demographic and clinical characteristics of reported cases are described on page 10 [Table 6].

Figure 7. Powassan virus (POWV) activity reported to ArboNET, by state, United States, 2011 (as of November 1, 2011)

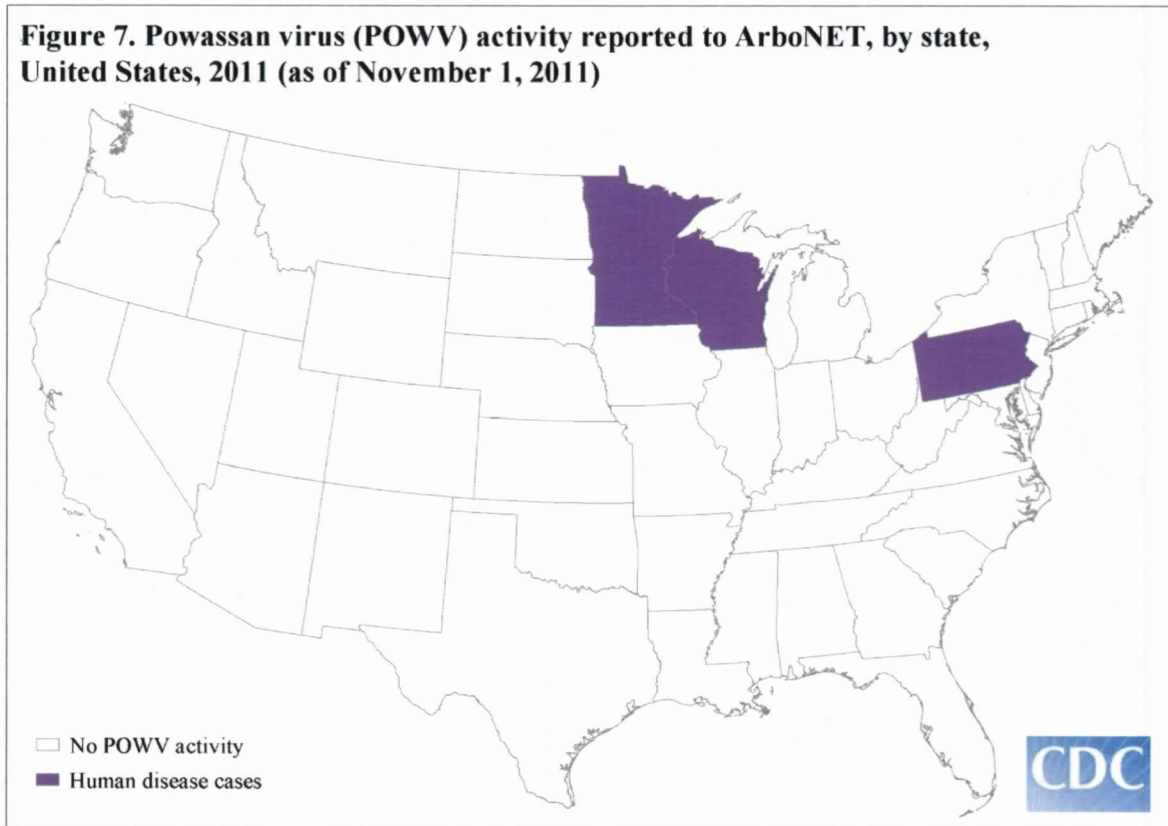


Table 4. Powassan virus (POWV) human disease cases reported to ArboNET, United States, 2011 (as of 11/01/11)

	Neuroinvasive disease cases	Nonneuroinvasive disease cases	Total cases*	Deaths
Minnesota	7	2	9	1
Pennsylvania§	1	--¶	1	--
Wisconsin	2	1	3	--
Totals	10	3	13	1

*Includes confirmed and probable cases.

§Jurisdictions reporting their first POWV human disease case for 2011.

¶None reported.

St. Louis encephalitis virus (SLEV) activity in 2011

As of November 1st, four states have reported SLEV activity to ArboNET for 2011, including two states with reported human disease cases and two additional states with reported SLEV activity in non-human species only [Figure 8 and Table 5]. During the past month (October 1-November 1), SLEV activity has been reported from one state (Florida).

Figure 8. St. Louis encephalitis virus (SLEV) activity reported to ArboNET, by state, United States, 2011 (as of November 1, 2011)

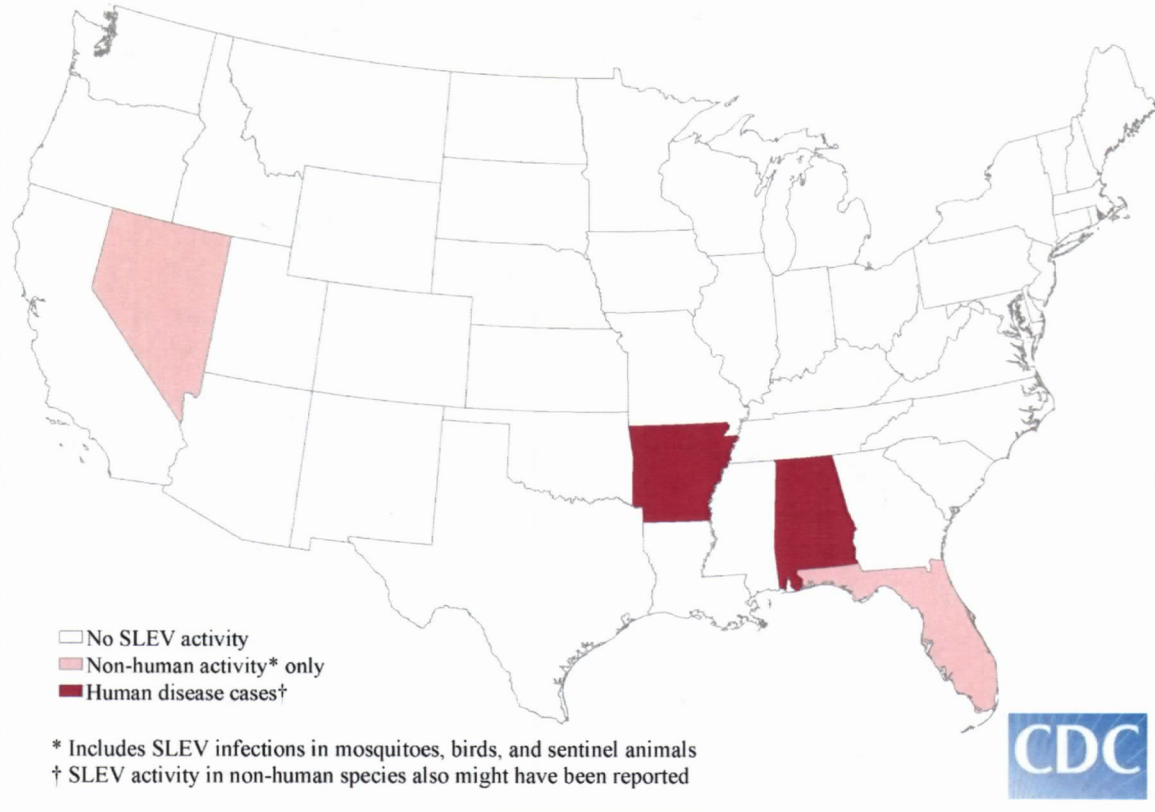


Table 5. St. Louis encephalitis virus (SLEV) human disease cases reported to ArboNET, United States, 2011 (as of 11/01/11)

	Neuroinvasive disease cases	Nonneuroinvasive disease cases	Total cases*	Deaths
Alabama§	1	--¶	1	--
Arkansas	2	--	2	--
Totals	3	--	3	--

*Includes confirmed and probable cases.

¶None reported.

§Jurisdiction reporting their first SLEV human disease case for 2011; onset of illness for this case was in August.

Table 6. Characteristics of reported cases of arboviral disease, United States, 2011 (as of 11/01/2011)

	WNV (N=579)		LACV (N=105)		POWV (N=13)	
	No.	(%)	No.	(%)	No.	(%)
Male sex	345	(59)	63	(60)	10	(77)
Age group in years						
<20	25	(4)	99	(94)	2	(15)
20-39	76	(13)	0	(0)	1	(8)
40-49	96	(17)	1	(1)	1	(8)
50-59	115	(20)	2	(2)	3	(23)
≥60	267	(46)	3	(3)	6	(46)
Onset of illness						
January	0	(0)	0	(0)	0	(0)
February	0	(0)	0	(0)	0	(0)
March	1	(<1)	0	(0)	0	(0)
April	0	(0)	0	(0)	0	(0)
May	3	(1)	1	(1)	3	(23)
June	7	(1)	9	(9)	5	(38)
July	84	(14)	38	(36)	4	(31)
August	266	(46)	40	(38)	1	(8)
September	209	(36)	17	(16)	0	(0)
October	9	(2)	0	(0)	0	(0)
Clinical syndrome						
Nonneuroinvasive	187	(32)	10	(10)	3	(23)
Neuroinvasive						
Encephalitis	227	(39)	79	(75)	8	(62)
Meningitis	145	(25)	13	(12)	2	(15)
Acute flaccid paralysis†	20	(3)	3	(3)	0	(0)
Outcome						
Hospitalization	440	(76)	95	(90)	10	(77)
Death	35	(6)	1	(1)	1	(8)

WNV=West Nile virus; LACV=La Crosse virus; POWV=Powassan virus.

† A total of 16 WNV disease cases classified as acute flaccid paralysis also had encephalitis, three also had meningitis. Three LACV disease cases classified as acute flaccid paralysis also had encephalitis.



About ArboNET

ArboNET is a national arboviral surveillance system managed by CDC and state health departments. In addition to human disease, ArboNET maintains data on arboviral infections among presumptive viremic blood donors (PVDs), veterinary disease cases, mosquitoes, dead birds, and sentinel animals. As with other national surveillance data, ArboNET data has several limitations that should be considered in analysis, interpretation, and reporting [**Box**].

Box: Limitations of ArboNET data

The following should be considered in the analysis, interpretation, and reporting of ArboNET data:

1. ArboNET is a passive surveillance system. It is dependent on clinicians considering the diagnosis of an arboviral disease and obtaining the appropriate diagnostic test, and reporting of laboratory-confirmed cases to public health authorities. Diagnosis and reporting are incomplete, and the incidence of arboviral diseases is underestimated.
2. Reported neuroinvasive disease cases are considered the most accurate indicator of arboviral activity in humans because of the substantial associated morbidity. In contrast, reported cases of nonneuroinvasive arboviral disease are more likely to be affected by disease awareness and healthcare-seeking behavior in different communities and by the availability and specificity of laboratory tests performed. Surveillance data for nonneuroinvasive disease should be interpreted with caution and generally should not be used to make comparisons between geographic areas or over time.
3. Provisional ArboNET data are provided to help track recent arboviral disease activity. However, these data may change substantially before they are finalized. Provisional data from the current year should not be combined with or compared to final data from previous years.

Additional resources

For additional arboviral disease information and data, please visit the following websites:

- CDC's Division of Vector-Borne Diseases:
www.cdc.gov/ncidod/dvbid/index.html
- National Notifiable Diseases Surveillance System:
http://www.cdc.gov/osels/ph_surveillance/nndss/phs/infdis2011.htm
- U.S. Geological Survey (USGS):
<http://diseasemaps.usgs.gov/>
- AABB (American Association of Blood Banks):
www.aabb.org/programs/biovigilance/Pages/wnv.aspx

11/17/11



WASHOE COUNTY HEALTH DISTRICT

AIR QUALITY MANAGEMENT DIVISION



Public Health
Prevent. Promote. Protect.

Date: November 17, 2011

To: District Board of Health *KD*

From: Kevin Dick, Director, Air Quality Management

Re: Monthly Report for Air Quality Management

Agenda Item: 14.D.

The enclosed Air Quality Management Division Report is for the month of October 2011 and includes the following sections:

- Air Quality
- Monitoring Activity
- Planning Activity
- Permitting Activity
- Compliance/Inspection Activity
- Enforcement Activity



Director's Report OCTOBER 2011

Poll Shows Americans Support Clean Air Rules

A nationwide poll by Ceres released on October 12th shows that 75 percent of voters believe that EPA, rather than Congress, should set air pollution standards. The poll also reveals that 67 percent of respondents, representing both political parties, oppose Congress' anti-EPA actions and are in favor of EPA's rules to control emissions from power plants. Sixty-five percent of those surveyed believe that the benefits to health and the environment related to air pollution controls outweigh the costs. Further, 75 percent think that a compelling reason for the regulations is the fact that they will improve local economies and create thousands of new jobs through investments in new technology. A copy of the Press Release with a summary of poll results is attached.

Green – Yellow- Red Burn Code Season

A press release was issued on October 31st announcing the beginning of the green-yellow-red burn code season and I began giving media interviews to raise community awareness and understanding of the Burn Code. The message we are emphasizing this season is that the most important thing people can do to preserve our air quality is to voluntarily stop burning when we issue a yellow Burn Code, and before the air quality becomes unhealthy. The Burn Code will be issued daily through February and is available on the Air Quality Hotline at 785-4110.

American Planning Association Conference

The Nevada Chapter of the American Planning Association held their 39th annual conference at John Ascuaga's Nugget October 19-21. The conference included a track devoted to transportation planning, as well as tracks on the role of government and the private sector in planning. I found the conference sessions to be very informative and the mix of participants conducive to productive networking and discussions. The conference was particularly relevant as we embark on work with the Regional Transportation Commission to develop the 2035 Regional Transportation Plan.

Prescribed Burns

During October, and particularly the last six days of the month the Truckee Meadows air quality was influenced by prescribed burns taking place on federal lands in California. Fortunately, Air Quality Index levels did not exceed the mid-point of the moderate range. But, it was definitely hazy over the Nevada Day Holiday weekend.

Kevin Dick, Director

AIR QUALITY COMPARISON FOR OCTOBER

Air Quality Index Range		# OF DAYS OCTOBER 2011	# OF DAYS OCTOBER 2010
GOOD	0 to 50	25	29
MODERATE	51 to 100	6	2
UNHEALTHY FOR SENSITIVE GROUPS	101 to 150	0	0
UNHEALTHY	151 to 200	0	0
VERY UNHEALTHY	201 to 300	0	0
TOTAL		31	31

HIGHEST AQI NUMBER BY POLLUTANT

Air Quality

POLLUTANT	OCTOBER 2011	YTD for 2011	OCTOBER 2010	Highest for 2010
CARBON MONOXIDE (CO)	17	39	16	31
OZONE 8 hour (O3)	49	114	54	104
PARTICULATES (PM _{2.5})	72	102	49	112
PARTICULATES (PM ₁₀)	54	69	41	83

For the month of October, the highest Air Quality Index (AQI) value reported for the month of October was seventy-two (72) for PM_{2.5} which occurred on October 29th. There were no exceedances of Carbon Monoxide or Ozone standards. There were twenty-five (25) days the air quality was in the good range and six (6) days the air quality was in the moderate range.

Planning & Monitoring Activity

Ambient Air Monitoring Equipment: The second of three continuous PM10 beta attenuation monitors (BAM) recently purchased with EPA air quality grant funds is now online at the Toll Road monitoring station. These BAMs will enhance the PM10 monitoring network by providing additional near time PM10 data.

Data Management System: The AQM is in the process of converting its ambient air monitoring data management system to AgilAire's AirVision. To help facilitate the transition, AgileAire provided AQM staff with two days of hands-on training.

Prescribed Burning: The Fall prescribed burn (sometimes referred to as controlled burns) season began with several projects starting in the Lake Tahoe Basin. Local, state, and federal land managers develop resource management plans to improve forest health. If their plans include prescribed burning, then they must follow the Health District's Smoke Management Program and address potential smoke impacts affecting the citizens of Washoe County. Prescribed burns in adjacent jurisdictions such as California can also impact our local air quality. AQM staff participates on the Air and Land Managers working group which includes representatives from California's air quality management agencies, California land managers, and federal land managers.

Lead Infrastructure State Implementation Plan (I-SIP): The lead I-SIP that was adopted by the District Board of Health on August 25 was formally submitted by the Nevada Division of Environmental Protection to EPA Region IX on October 12. The I-SIP is a summary of current AQM regulations and programs demonstrating the Health District's ability to meet the health-based lead National Ambient Air Quality Standard.

Daniel K. Inouye, Branch Chief

Permitting Activity

TYPE OF PERMIT	2011		2010	
	OCTOBER	YTD	OCTOBER	ANNUAL TOTAL
Renewal of Existing Air Permits	79	1118	73	1296
New Authorities to Construct	6	80	3	40
Dust Control Permits	2 (2.12 acres)	82 (752 acres)	3 (94 acres)	127 (2814 acres)
Wood Stove Certificates	27	216	17	254
WS Dealers Affidavit of Sale	8 (5 replacements)	87 (53 replacements)	16 (4 replacements)	82 (46 replacements)
WS Notice of Exemptions	465 (9 stoves removed)	4744 (45 stoves removed)	737 (0 stoves removed)	5767 (41 stoves removed)
Asbestos Assessments and Asbestos Removal Notifications (NESHAP)	93	831	70	1027

Compliance &
Inspection Activity

Staff reviewed twenty-two (22) sets of plans submitted to the Reno, Sparks or Washoe County Building Departments to assure the activities complied with Air Quality requirements.

Staff conducted forty (40) stationary source renewal inspections and fifty-four (54) gas station inspections in October. Staff also conducted inspections on asbestos removal and construction/dust projects.

Permitting & Enforcement Activity

Staff has been working with personnel from the Truckee River Flood Protection District regarding the asbestos abatement and demolition of buildings adjacent to the river on North Edison Way. 105 N. Edison has been completed and the asbestos has been abated at 125 N. Edison with the demolition to be completed during the month of November. All activities have been in compliance with the asbestos regulations.

As a result of comments at the Air Pollution Control Hearing Board meeting on October 4th, AQM is conducting additional educational outreach efforts for various stationary sources. Specifically, AQM is working with Peter Krueger of the Nevada Petroleum Marketers & Convenience Store Association to educate gasoline station owners/operators about needed daily inspections for permit to operate compliance. Mr. Krueger has graciously agreed to publish information produced by the AQM in their newsletter. AQM is also distributing a compliance advisory memo to station owners/operators.

At the request of the local fire agencies due to dry October conditions, staff has extended the "open burn season" from October 31 to November 13th. Burning of natural vegetation is only allowed outside of the Truckee Meadows hydrographic basin except for certain local municipalities such as divisions of state or federal government, ditch and water delivery facilities, and other special situations.

Noel Bonderson, Branch Chief

Enforcement Activity

COMPLAINTS	2011*		2010		
	OCTOBER	YTD	OCTOBER	YTD	Annual Total
Asbestos	3	16	0	18	22
Burning	1	2	0	6	6
Construction Dust	4	48	1	50	52
Dust Control Permit	0	18	0	0	0
Diesel Idling	0	2	0	4	5
Odor	2	15	3	17	22
Spray Painting	0	6	1	10	10
Permit to Operate	8	39	2	11	14
Woodstove	0	2	0	0	0
TOTAL	18	148	7	116	131
NOV'S	OCTOBER	YTD	OCTOBER	YTD	Annual Total
Warnings	8	39	0	4	7
Citations	0	7	0	9	12
TOTAL	8	46	0	13	19

* Discrepancies in totals between monthly reports can occur because of data entry delays.

Notices of Violation (NOVs):

There were eight (8) Notice of Violations (NOV's) issued in October 2011. There was eight (8) NOV Warnings, all for violation of permit conditions. There were no NOV Citations for October 2011.

Voters Overwhelmingly Support EPA Air Pollution Rules — Ceres

A new, nationwide poll shows that by a wide margin, voters of both political parties and in all regions of the U.S. disagree with Congress' anti-Environmental Protection Agency (EPA) agenda and support the EPA's new rules to limit air pollution from coal-fired power plants.

A new, nationwide poll shows that by a wide margin, voters of both political parties and in all regions of the U.S. disagree with Congress' anti-Environmental Protection Agency (EPA) agenda and support the EPA's new rules to limit air pollution from coal-fired power plants. Two-thirds of the respondents – 67 percent – oppose Congress delaying implementation of the air pollution rules, according to the national survey of 1,400 voters conducted by Hart Research Associates and GS Strategy Group and sponsored by Ceres.

"American voters, both Democrats and Republicans, are unified in backing prompt EPA action on the clean air rules," said Ceres president Mindy Lubber. "Regardless of affiliation, voters want a healthy environment and an end to foot-dragging to upgrade dirty power plants. Despite the rhetoric in Washington, clean air is not a partisan issue among Americans, and Congress would do well to take notice."

"Although some in Congress oppose these rules, the level of support from Republican voters is surprisingly strong," said Greg Strimple of GS Strategy Group, a Republican pollster who jointly conducted the research. "The research clearly demonstrates Republican voters are willing to support new rules to reduce harmful emissions in order to improve public health. Republicans like clean air, too."

The poll, conducted Aug 31-Sept 7, gauged voters' feelings about two EPA clean air rules - the Cross State Air Pollution Rule (CSAPR) and the Mercury and Air Toxics Standards Rule (aka Utility MACT). The first rule will require significant reductions in harmful power plant emissions, mostly from coal-fired generators, that drift hundreds of miles downwind and across state lines. The second rule will require power plants to curb toxic emissions of mercury, lead, arsenic and acid gases by 2015. Many of the power plants impacted by these rules are more than 50 years old.

These are the same two rules that Ceres and the University of Massachusetts Political Economy Research Institute evaluated earlier this year with respect to economic and job-creation benefits the rules would bring across the United States: <http://www.ceres.org/resources/reports/new-jobs-cleaner-air>.

Among the poll's key findings:

88% of Democrats, 85% of Independents, and 58% of Republicans oppose Congress stopping the EPA from enacting new limits on air pollution from electric power plants.

67% of voters support the CSAPR and 77% of voters support the Toxics rule.

65% of voters surveyed are confident that the health and environmental benefits of air pollution standards outweigh the costs of complying with them.

79% of voters agree that the rules are important to enact for health reasons.

75% of voters believe a compelling reason to implement these rules is the boost to local economies and thousands of new jobs that will be created from investments in new technology.

Geoff Garin, president of Hart Research Associates, which jointly conducted the poll observed, "Despite the vitriol coming from Capitol Hill, the research shows that not only do voters see that it is

an important issue, the undeniable consensus is that they support these rules. The fear of not having clean air is a clear-cut issue according to the voting public. And, not only do voters overwhelmingly support the EPA's clean air rules, they firmly believe EPA should be allowed to do its job without interference from Congress."

Support Extends Across Party Lines

This poll found that support for the EPA air pollution rules extends across the political spectrum. By three to one (75%) the public believes that the EPA, not Congress, should determine whether stricter limits are needed on air pollution from electric power plants. This is a view supported by members of all parties, with 85% of Democrats, 62% of Republicans, and 79% of Independents in agreement.

Key Regional Findings

Across the country, voters support CSAPR, with 71% of voters from the Northeast, 66% of voters in the South, 62% of voters in the Midwest, and 71% of voters from the West in favor. Similarly, support for the Mercury and Air Toxics Standards Rule is high nationwide: 80% of voters in the Northeast, 75% of voters in the South, 72% of voters in the Midwest, and 83% of voters in the West in support.

Voters Recognize the Benefits

Voters see threats to water and health as the most important reasons for enacting new EPA air pollution rules. In fact, 80% of voters surveyed feel it is important to enact new rules because coal-burning power plants contribute to water pollution via deposition of airborne pollutants that eventually settle in our water bodies. 79% of voters agree that the rules are important for health reasons, as power plant pollution is responsible for more than 24,000 premature deaths, 38,000 non-fatal heart attacks, and more than 550,000 asthma attacks each year.

These rules will save lives and, according to research sponsored by Ceres on the economic impact of the rules, create 1.4 million new jobs over the next five years through investments in pollution controls, new plant construction, and retirement of older, less efficient power plants as the country transitions to a cleaner, modernized generation fleet. Seventy-five percent of those surveyed believe job creation from these rules is an important reason to enact them.

That report, "*New Jobs-Cleaner Air: Employment Effects under Planned Changes to EPA's Air Pollution Rules*," found that installing modern pollution controls and building new power plants creates a wide array of skilled, high-paying installation, construction and professional jobs, as well as jobs at companies that manufacture pollution controls and other required construction/maintenance equipment. The report was prepared by Dr. James Heintz of the Political Economy Research Institute at the University of Massachusetts, Amherst.

Survey Methodology

Hart Research Associates and GS Strategy Group conducted this online nationwide survey, among 1,400 voters, between August 31-September 7, 2011. More details about the poll [can be found here](#).

About Ceres

Ceres is a leading coalition of investors, environmental groups and other public interest

organizations working with companies to address sustainability challenges such as global climate change. Ceres also directs the Investor Network on Climate Risk (INCR), a network of 98 investors with \$9.5 trillion of collective assets focused on the business impacts of climate change.
www.ceres.org

About Hart Research Associates

Founded in 1971, Hart Research Associates is one of the leading survey research firms in the United States and has been at the cutting edge of change in the field of public opinion for more than three decades. In that time, the firm has conducted well over 5,000 public opinion surveys and has administered and analyzed interviews among more than three million individuals.

About GS Strategy Group

GS Strategy Group is a nationally recognized public opinion research firm based in Boise, ID. GSSG clients benefit from Greg Strimple's unique combination of expertise in public opinion and consumer behavior, award-winning work in advertising, and extensive knowledge of regulated industries, the political process and public policymaking. Greg has leveraged his research, analytical and communications skills to devise and execute successful public policy and marketing campaigns for some of the country's leading corporations and institutions.



11/17/11

Washoe County Health District



Public Health
Prevent. Promote. Protect.

November 17, 2011

TO: District Board of Health Members

FROM: Joseph P. Iser, MD, DrPH, MSc
District Health Officer

SUBJECT: October District Health Officer Report

2012-2013 Legislative Sessions

- The WCHD Leadership Team brought forward several items to the DBOH Retreat last month. The DHO will continue to work with the leadership team, the NSMA, DBOH, and the other DHOs in Nevada to refine and edit this list.

Budget

- No new fiscal issues for Fiscal Year 12 to report at this time.

Human Resources

- Evaluations have met the self-imposed threshold of 85%.
- Current recruitments are underway for a nurse for the TB program, an epidemiologist, and for a Senior Air Quality Specialist. Some of these are caught up in the county's system for position approval.

Communication

- DHO will continue to meet routinely or as needed with the County Manager, Washoe County Emergency Manager, Sheriff and Undersheriff, REMSA, and other groups and individuals as appropriate.
- The District continues working on a health status report, planned to be completed by the end of December.
- Ms. Coulombe and Mr. Sack report that restaurant inspections should be online by the end of the calendar year.
- DHO has scheduled a requested presentation to the Reno City Council with REMSA; the Sparks City Council has scheduled the same presentation.
- Sparks City Council has requested the DHO to present on Skin Cancer in the Spring.
- DHO presented on public health to Renown and to the UNR School of Medicine.

DBOH AGENDA ITEM # 14.F.

1001 EAST NINTH STREET / P.O. BOX 11130, RENO, NEVADA 89520 (775) 328-2400 FAX (775) 328-2279

www.washoecounty.us/health

WASHOE COUNTY IS AN EQUAL OPPORTUNITY EMPLOYER
PRINTED ON RECYCLED PAPER

Washoe County & Community Activities

- DHO attended the BCC strategic retreat.

Media Contacts and Outreach

Health District Media Contacts: October 18, 2011 - November 8, 2011

<u>DATE</u>	<u>MEDIA</u>	<u>REPORTER</u>	<u>STORY</u>
11/4/2011	Reno Gazette-Journal	Scott Oxarart Michael	High school football game food concessions (Tony Macaluso)
11/1/2011	Reno Gazette-Journal	Martinez	EPA finds 5 charter schools in Washoe County Schools non compliant with asbestos plans (Kevin Dick/Phil Ulibarri)
11/1/2011	KTVN CH 2 - CBS Reno KKOH Radio - ABC	Jason Pasco	Influenza activity in Washoe County (Phil Ulibarri)
11/1/2011	News Reno	Jim Fannin	Burn Code program begins (Kevin Dick)
10/28/2011	KRNV CH 4 - NBC Reno	Jen Wahl	Burn Code program begins (Kevin Dick)

Press Releases/Media Advisories

10/18/2011	PIO Ulibarri	Green Yellow Red Burn Code Begins **
10/17/2011	PIO Ulibarri	Media Advisory - AQM Director available for Burn Code Interviews

** Burn Code story appeared: KOLO TV CH8; ABC Reno, KRNV CH4; NBC Reno, KTVN CH2; CBS Reno, FOX 11; Reno, Daily Sparks Tribune; KKOH Radio; ABC News Reno; Reno Gazette-Journal; Las Vegas Review-Journal; Sacramento Bee; My San Antonio News; Washoe Valley News (Topix.com)

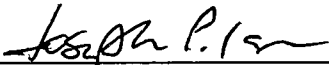
State-Wide (and Beyond) Organizational Efforts

- We continue in close contact with SNHD and CCHD to routinely meet or call on a more-than-monthly basis to discuss and plan issues of common concern. We met with SNHD and CC PH and agreed on funding allocations for carry-forward funding. WCHD will receive an additional \$120,000 in carry-forward funds. The three local health jurisdictions will meet with NSHD to agree on future allocations for PHEP funds.
- DHO will meet November 15 with the relevant emergency managers, EHS managers, and health officers for Carson City, Placer, Nevada, Sierra, and Washoe Counties to continue and expand the discussion on hazardous materials issues at/around the State border along with other EHS issues. We will continue these meetings on mutual aid.

- DHO will work to continue broader discussions among those same border counties for other mutual aid and program effectiveness issues. These will primarily involve the health officers, with specific program representatives involved as appropriate.

District Board of Health Information and Resources

- DHO plans to get a preliminary report to DBOH in December on the directions suggestion by the DBOH, Division Directors, and Supervisors at the DBOH retreat on Thursday, October 6.
- New items will be prioritized for inclusion in the District's work and developing strategic plan.



Joseph P. Iser, MD, DrPH, MSc
District Health Officer
Washoe County Health District

