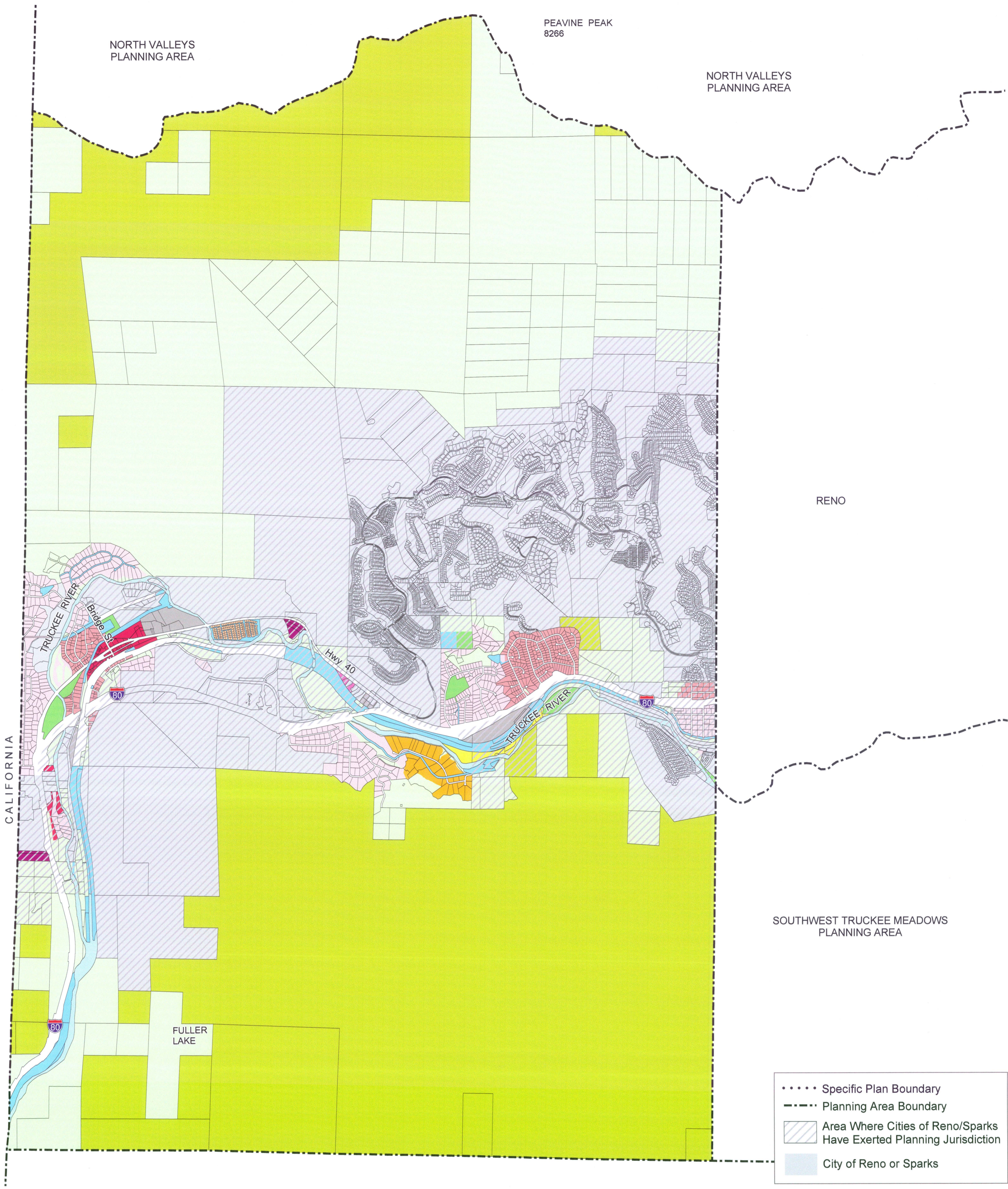


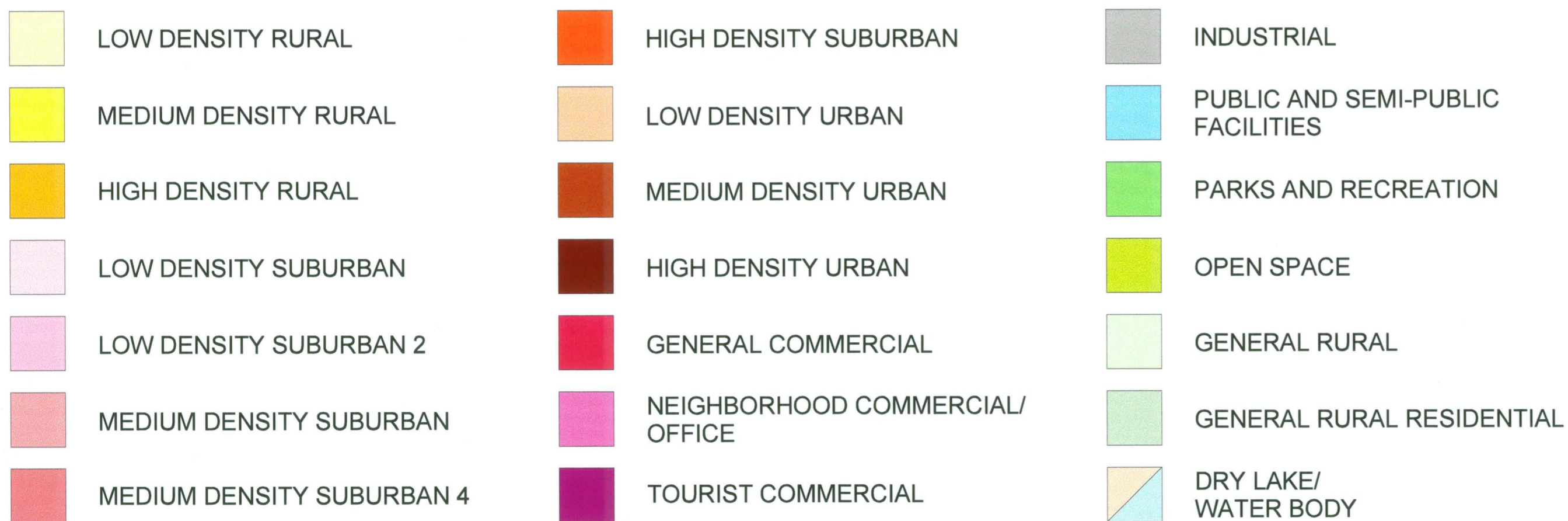
PEAVINE PEAK
8266

NORTH VALLEYS
PLANNING AREA

NORTH VALLEYS
PLANNING AREA



VERDI REGULATORY ZONE MAP



NOTE: THE SCALE AND CONFIGURATION OF ALL INFORMATION SHOWN HEREON ARE APPROXIMATE ONLY AND ARE NOT INTENDED AS A GUIDE FOR DESIGN OR SURVEY WORK. REPRODUCTION IS NOT PERMITTED WITHOUT PRIOR WRITTEN PERMISSION FROM THE WASHOE COUNTY COMMUNITY DEVELOPMENT DEPARTMENT.

0 1,000 2,000 4,000
Feet

G:\arcdata\planarea\ve\veRegzone_final\veRz071310.mxd

CERTIFICATION:
THIS DOCUMENT HAS BEEN REVIEWED AND APPROVED AS AN ACCURATE REPRESENTATION OF THE ADOPTED ZONING MAPS OF WASHOE COUNTY, NEVADA, BY THE WASHOE COUNTY COMMUNITY DEVELOPMENT DEPARTMENT.

DATE 12/28/2010 DIRECTOR



**Department of
Community Development**

**WASHOE COUNTY
NEVADA**

PC Date: May 20, 2010
BCC Date: July 13, 2010

Post Office Box 11130
Reno, Nevada 89520

(775) 328-3600