

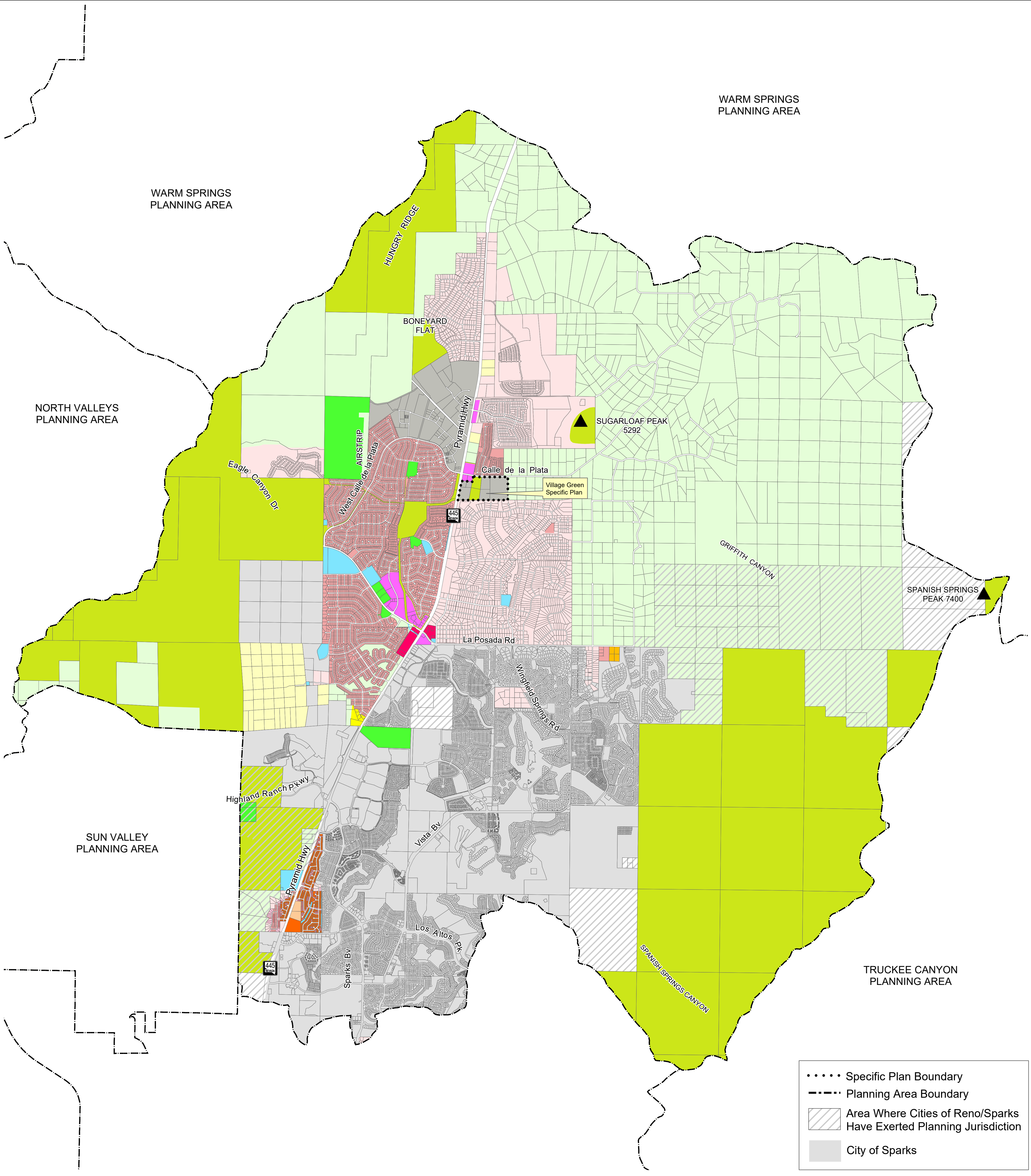
WARM SPRINGS
PLANNING AREA

WARM SPRINGS
PLANNING AREA

NORTH VALLEYS
PLANNING AREA

SUN VALLEY
PLANNING AREA

TRUCKEE CANYON
PLANNING AREA



- Specific Plan Boundary
- Planning Area Boundary
- Area Where Cities of Reno/Sparks Have Exerted Planning Jurisdiction
- City of Sparks

SPANISH SPRINGS REGULATORY ZONE MAP

- | | | |
|---------------------------|------------------------------------|-----------------------------------|
| LOW DENSITY RURAL | HIGH DENSITY SUBURBAN | INDUSTRIAL |
| MEDIUM DENSITY RURAL | LOW DENSITY URBAN | PUBLIC AND SEMI-PUBLIC FACILITIES |
| HIGH DENSITY RURAL | MEDIUM DENSITY URBAN | PARKS AND RECREATION |
| LOW DENSITY SUBURBAN | HIGH DENSITY URBAN | OPEN SPACE |
| LOW DENSITY SUBURBAN 2 | GENERAL COMMERCIAL | GENERAL RURAL |
| MEDIUM DENSITY SUBURBAN | NEIGHBORHOOD COMMERCIAL/
OFFICE | GENERAL RURAL AGRICULTURAL |
| MEDIUM DENSITY SUBURBAN 4 | TOURIST COMMERCIAL | DRY LAKE/
WATER BODY |

NOTE: THE SCALE AND CONFIGURATION OF ALL INFORMATION SHOWN HEREON ARE APPROXIMATE ONLY AND ARE NOT INTENDED AS A GUIDE FOR DESIGN OR SURVEY WORK. REPRODUCTION IS NOT PERMITTED WITHOUT PRIOR WRITTEN PERMISSION FROM THE WASHOE COUNTY PLANNING AND BUILDING DIVISION.

0 1,250 2,500 5,000 Feet

CERTIFICATION: THIS DOCUMENT HAS BEEN REVIEWED AND APPROVED AS AN ACCURATE REPRESENTATION OF THE ADOPTED ZONING MAPS OF WASHOE COUNTY, NEVADA, BY THE WASHOE COUNTY PLANNING AND BUILDING DIVISION.

DATE 7/27/2023 DIRECTOR [Signature]

**Community Services
Department**

**WASHOE COUNTY
NEVADA**