



WASHOE COUNTY

"Dedicated To Excellence in Public Service"
www.co.washoe.nv.us

CM/ACM	<u>KS</u>
Finance	<u>DN</u>
DA	<u> </u> ✓
Risk Mgt.	<u>N/A</u>
HR	<u>N/A</u>
Clerk	<u>JS</u>

STAFF REPORT BOARD MEETING DATE: June 9, 2015

DATE: May 15, 2015

TO: Board of County Commissioners

FROM: Chris Benedict, Remediation District Manager, Community Services Department, 954-4642, cbenedict@washoecounty.us

THROUGH: Dwayne Smith, P.E., Division Director, Engineering & Capital Projects, Community Services Department, 328.2043, desmith@washoecounty.us

SUBJECT: Public Hearing for the second reading and possible adoption of an ordinance amending Ordinance No. 1000 in order to change the boundaries of District No. 24 (Groundwater Remediation); and, second reading and possible adoption of an ordinance imposing a fee on the parcels of land in Washoe County, Nevada District No. 24 to pay the costs of developing and carrying out a plan for remediation; and prescribing other matters relating thereto. (All Commission Districts.)

SUMMARY

In 1995 the legislature passed NRS 540A.250-285, allowing for the creation of a district for the remediation of the quality of water that is available for municipal, industrial, or domestic use. In 1997, the Washoe County Board of Commissioners (Board) passed Ordinance 1000 creating District No. 24 (the Central Truckee Meadows Remediation District) in accordance with NRS540A.250 to address the tetrachloroethene (PCE) contamination of groundwater that is utilized to meet water demands in southern Washoe County.

The Board is required to amend the Central Truckee Meadows Remediation District (CTMRD) boundaries when needed. The boundary changes are accomplished through an ordinance that is required by NRS 540A.262 to be introduced by the Board at a public hearing. The CTMRD boundaries consist of the Service Area Boundary and the Contaminant Boundary. As per NRS540A.250(3)(b), the Service Area Boundary includes the wholesale and retail service areas of any water purveyor with groundwater wells located inside area contaminated by PCE (i.e., inside the Contaminant Boundary) and the Contaminant Boundary includes the areas where groundwater is contaminated by PCE, and the areas where that contamination may migrate to if remediation is not carried out.

Amendments to the Service Area Boundary are required when there are changes in the wholesale and/or retail service areas of water purveyors with wells located inside the Contaminant Boundary. These changes occur when parcels are annexed into or removed from those service areas.

The Board is further required (NRS 540A.265) to determine by ordinance the amount of the fee to be collected in a given year for carrying out activities in support of the Remediation Management Plan (i.e. the “Plan for Remediation” referred to in NRS 540A.260).

Changes in the CTMRD Service Area Boundary and the determination of the annual remediation fees have occurred through ordinance amendments every year since 1998. Changes in the CTMRD Contaminant Boundary (first established in 2002) occurred in 2011 and 2014. No changes in the CTMRD Contaminant Boundary are being considered for 2015.

The number of parcels subject to the remediation fee, the average annual per parcel remediation fee for each benefit group, and the total annual remediation fee revenue that would result (or that has resulted in recent years) from the adoption of these ordinances are summarized in following table.

Summary Statistics Resulting from CTMRD Ordinance Amendments							
Fee Year	Benefit Group						Total Annual Remediation Fee Revenue
	A ⁽¹⁾		B ⁽²⁾		C ⁽³⁾		
	# of parcels	avg. annual fee	# of parcels	avg. annual fee	# of parcels	avg. annual fee	
2015 (estimates)	116140	\$8.61	4799	\$10.24	2480	\$106.38	\$1,249,995
2014	114747	\$8.70	4847	\$10.56	2480	\$105.13	\$1,249,957
2013	112752	\$8.73	4895	\$10.46	2665	\$105.13	\$1,249,929
2012	107422	\$8.92	3720	\$14.09	2457	\$119.74	\$1,249,927
2011	108005	\$8.86	3576	\$15.08	2601	\$112.82	\$1,249,954
2010 ⁽⁴⁾	108101	\$15.46	6596	\$24.67	3737	\$220.97	\$2,499,937

⁽¹⁾ Benefit Group A: all water using parcels within the CTMRD Service Area Boundary

⁽²⁾ Benefit Group B: residential parcels within the CTMRD Contaminant Boundary (these parcels are also a subset of Benefit Group A)

⁽³⁾ Benefit Group C: non-residential parcels within the CTMRD Contaminant Boundary (these parcels are also a subset of Benefit Group A)

⁽⁴⁾ The 2010 fees and revenue predate a 50% fee rate holiday approved by the Board in 2011 and the use of a fund reserve in place of new revenue.

Washoe County Strategic Objective supported by this item: Sustainability of our financial, social and natural resources.

PREVIOUS ACTION

On April 15, 2015, The Board of County Commissioners (Board) approved a Resolution calling a hearing (set for May 12, 2015) on the amendment of the boundaries of District No. 24 (Groundwater Remediation/Central Truckee Meadows Remediation District) in Washoe County, Nevada; providing for a notice of hearing, and providing other matters properly related thereto.

On May 12, 2015, the Board held a Public hearing to consider all comments concerning a proposed amendment to the boundaries of the Groundwater Remediation District (Central Truckee Meadows Remediation District); and held the first reading of an ordinance

amending Ordinance No. 1000 in order to change the boundaries of District No. 24 (Groundwater Remediation); and providing other matters relating thereto. (Second reading and adoption was set for June 9, 2015; and the Board held the first reading of an ordinance imposing a fee on the parcels of land in Washoe County, Nevada District No. 24 to pay the costs of developing and carrying out a plan for remediation; and prescribing other matters relating thereto. (Second reading and adoption was set for June 9, 2015.)

Public hearings to introduce amendments to the CTMRD boundary ordinance and the remediation fee ordinance have been held annually by the Board since 1998.

BACKGROUND

In 1997, in accordance with NRS 540A.250(1), the Board created, through the adoption of Ordinance 1000, District No. 24 (Groundwater Remediation); a.k.a. the Central Truckee Meadows Remediation District or CTMRD. The CTMRD was created to address the widespread PCE contamination of groundwater in the central Truckee Meadows that was certified to exist by the District Health Officer and the NDEP Administrator.

NRS 540A.250(3)(b) specifies that the CTMRD boundary shall include the wholesale and retail service area (i.e. within what is referred to as the CTMRD service area boundary) of the water company or companies with wells located within the area where the condition requiring remediation is present or expected to migrate unless remediation is carried out (i.e. within what is referred to as the CTMRD contaminant boundary).

Both the Truckee Meadows Water Authority (TMWA) and the Washoe County Department of Community Services had municipal water supply wells located within the CTMRD contaminant boundary during 2014. TMWA also provides wholesale water to Sun Valley General Improvement District, Parr-Reno Water Company, and Washoe County. Accordingly, the CTMRD service area boundary is defined to include the TMWA wholesale and retail service area and a portion of the Washoe County service area.

Each year since 1997 the Board has, in accordance with NRS540A.262, amended the CTMRD boundary to reflect any parcels added to or removed from these service areas. These changes could include:

- 1) Parcels added into or removed from the wholesale and retail service area of effected water purveyors and to exclude properties that are federally owned, properties that are undeveloped, and properties that receive water service wholly independent from those purveyors (i.e. the CTMRD Service Area Boundary); and,
- 2) Parcels added into or removed from the area where the condition requiring remediation has been determined by the Board to be present, including any area to which the condition is expected to migrate unless remediation is carried out (i.e. the CTMRD Contaminant Boundary).

NRS 540A.265 requires that the water service providers within the TMWA wholesale and retail service area and that portion of the Washoe County service area within the CTMRD service area boundary provide Washoe County with the dollar amount billed for

water service during the previous calendar year, by parcel, to each of the parcels within their respective water service areas, within 90 days of being requested to do so. The amount billed for water use provides the basis upon which the remediation fee will subsequently be determined. While NRS 540A.265 (1)(d) allows for assessing remediation fees against undeveloped parcels or parcels that receive water service wholly independent from water purveyors with wells within CTMRD contaminant boundary, staff has recommended since the creation of the boundaries that the Board exclude those properties from remediation fee assessment. Staff continues to make that recommendation at this time.

FISCAL IMPACT

Approval of these Ordinance amendments will add and remove parcels to/from the CTMRD Service Area Boundary, provide for operation and maintenance of well head treatment on five municipal wells, and provide for ongoing implementation of the Remediation Management Plan.

As shown in Exhibit 5, the FY15-16 CTMRD program fees will continue to remain at reduced levels (comparable to those put into effect during the 2-year 50% rate reduction approved by the Board on May 11, 2011). The decreased fee levels for FY11-12 and 12-13 resulted from the utilization of a fund reserve that had been created and funded in the past to provide one year of CTMRD program revenues in the event that purveyor water use information could not, for any reason, be processed in time to meet the deadline for general property tax bill distribution. Remediation fee revenue will remain at reduced levels and existing fund balance will be expended while a long term Financial Plan for the CTMRD program is completed. This plan will include a business case, capital plan, and best practice financial tools to insure the long-term effectiveness of the CTMRD program while preserving the viability of groundwater resources and minimizing adverse impacts on the regional economy.

It should be noted that the per parcel fee amounts shown on Exhibit 5 for represent the annual average remediation fee paid by property owners in each benefit group. The actual remediation fee charged to a specific individual parcel is dependent on the type of water service (service size, residential or commercial, metered or flat rate) to that parcel and the actual water consumption (as indicated by the annualized water bill). The first draft of the final fee distribution is scheduled to be completed on May 29, 2015. The final fee list will be delivered to the Treasurer's office (for inclusion on the general tax bills) no later than June 12, 2015.

The current budget for the CTMRD program has sufficient authority for continued operations utilizing existing resources and projected revenues from adoption of the Fee Amendment Ordinance.

RECOMMENDATION

It is recommended that the Board of County Commissioners hold a public hearing for the second reading and possible adoption of an ordinance amending Ordinance No. 1000 in order to change the boundaries of District No. 24 (Groundwater Remediation); and, hold a second reading and possible adoption of an ordinance imposing a fee on the parcels of

land in Washoe County, Nevada District No. 24 to pay the costs of developing and carrying out a plan for remediation; and prescribing other matters relating thereto.

POSSIBLE MOTION

Should the Board wish to implement the staff recommendation, a possible motion would be: “Move to hold a second reading and possible adoption of an ordinance amending Ordinance No. 1000 in order to change the boundaries of District No. 24 (Groundwater Remediation); and, hold a second reading and possible adoption of an ordinance imposing a fee on the parcels of land in Washoe County, Nevada District No. 24 to pay the costs of developing and carrying out a plan for remediation; and prescribing other matters relating thereto.”

CB:lr

- Exhibit 1 - boundary ordinance
- Exhibit 2 - boundary map
- Exhibit 3 - fee ordinance
- Exhibit 4 - remediation district fee area map
- Exhibit 5 - remediation fee schedule

Exhibit 1

Boundary Amendment Ordinance

Summary - An ordinance amending the boundaries of Washoe County, Nevada District No. 24 (Groundwater Remediation).

BILL NO. _____

ORDINANCE NO. _____

AN ORDINANCE AMENDING ORDINANCE NO. 1000 IN ORDER TO CHANGE THE BOUNDARIES OF DISTRICT NO. 24 (GROUNDWATER REMEDIATION); AND PROVIDING OTHER MATTERS RELATING THERETO.

1. **WHEREAS**, the Board of County Commissioners (herein “Board”) of the County of Washoe (herein “County”) in the State of Nevada has, pursuant to Ordinance No. 1000 (the “Creation Ordinance”), adopted and approved on November 14, 1997, created a district (the “District” or “District No. 24”) for the remediation of the quality of water (specifically in order to address contamination of ground water by perchloroethylene (“PCE”)) pursuant to NRS 540A.250 through 540A.285 and Sections 1 to 6 of Ch. 379, Statutes of Nevada, 1997 (the “1997 Act”); and

2. **WHEREAS**, subsection 3 of NRS § 540A.250 provides that:
“The District created pursuant to this section must include, without limitation:

(a) The area where the condition which requires remediation is determined by the Board to be present, or for which remediation is determined by the Board to be necessary, including any area to which the condition is expected to migrate unless remediation is carried out; and

(b) If the Board determines that the condition which requires remediation affects the quantity or quality of drinking water within the region, the wholesale and retail service area of any provider of water that has used or uses for any portion of its supply wells located in the area described in paragraph (a)”;

3. **WHEREAS**, pursuant to NRS § 540A.250, the Board has had prepared for it a plan for remediation designated the “Central Truckee Meadows Remediation District

Final Work Plan February 22, 1996” as updated by the “Central Truckee Meadows Remediation District Remediation Management Plan” dated October 28, 2002 (as updated, the “Plan for Remediation”); and

4. **WHEREAS**, the Plan for Remediation (including the update) has been submitted to the Division of Environmental Protection of the State of Nevada (the “Division”) and approved by the Division pursuant to Subsection 1 of NRS § 540A.260; and

5. **WHEREAS**, the Plan for Remediation indicates that, and based upon such plan the Board has determined that, the condition which requires remediation affects the quality of drinking water within the region; and

6. **WHEREAS**, the boundaries of the District described in the Creation Ordinance (the “Original Boundaries”) included the wholesale and retail water service area of Sierra Pacific Power Company (“Sierra”); and

7. **WHEREAS**, Sierra’s water business was acquired by the Truckee Meadows Water Authority (“TMWA”) during 2001; and

8. **WHEREAS**, Sierra was, and TMWA is, a provider of water service that has used and uses for a portion of its water supply, wells located in the area in which the condition (i.e., presence of PCE in the groundwater at unacceptable levels) that requires remediation is hereby determined by the Board to be present, based upon the Plan for Remediation; and

9. **WHEREAS**, Washoe County’s Community Services Department (CSD) was a provider of water service that used for a portion of its water supply a well or wells located in the area where the condition of PCE in the groundwater requires remediation is hereby determined by the Board to be present; and

10. **WHEREAS**, the Board has determined and hereby determines that the wholesale and retail water service area of Sierra/TMWA and a portion of the wholesale and retail service area of CSD are included in the boundaries of the District for the fee collected in a particular calendar year should include properties which were actually served with water provided by Sierra or TMWA and CSD on a retail or wholesale basis during the prior calendar year; and

11. **WHEREAS**, the Original Boundaries have been heretofore amended; and

12. **WHEREAS**, the Board has determined and hereby determines to propose to further amend the boundaries of the District with respect to the fee collected in 2015 to exclude from the District certain properties included in the Original Boundaries of the District as amended through July 1, 2014 (the “2014 Boundaries”), which properties did not receive water service on a wholesale or retail basis by TMWA or by CSD during calendar year 2014; and

13. **WHEREAS**, the Board has determined and hereby determines to propose to amend the Original Boundaries of the District with respect to the fee collected in 2015, to add to and include new properties added to the wholesale and retail water service areas of TMWA and that portion of the wholesale and retail water service area of CSD during calendar year 2014; and

14. **WHEREAS**, the Board has determined and hereby determines to propose to amend the Original Boundaries of the District with respect to the fee collected in 2015 to exclude from the District certain properties, which properties did not receive water service involving water provided on a wholesale or retail basis by TMWA and that portion of the wholesale and retail water service area of CSD during calendar year 2014; and

15. **WHEREAS**, each of the following have been filed with the County Clerk (the “Clerk”) on April 14, 2015, prior to the publication of a notice of hearing as hereinafter described:

(a) a list of the properties proposed to be excluded from the 2014 Boundaries with respect to the fees collected in 2015 as described in the 12th preamble hereto entitled “Second List of Properties to be excluded from 2014 Boundaries of District No. 24” (the “Second 2014 Exclusion List”),

(b) a description of the areas proposed to be added to the District as described in the 13th preamble hereto, entitled “2015 Description of Areas to be Added to District No. 24” (the “2015 Addition List”), and

(c) a list of the properties proposed to be excluded with respect to the fee imposed in 2015 as described in the 14th preamble hereto, entitled “First List of Properties to Be Excluded from the 2015 Boundaries of District No. 24” (the “First 2015 Exclusion List”); and

16. **WHEREAS**, pursuant to NRS § 540A.262, the Board is required to hold a hearing before amending the boundaries of the District; and

17. **WHEREAS**, after published notice in accordance with NRS § 540A.262, the Board on May 12, 2015 held a hearing on the amendment proposed to be made by this ordinance and hereby determines to overrule each and every objection to such amendment made at the hearing; and

18. **WHEREAS**, the Board has determined and the Board hereby determines to now amend the boundaries of the District.

NOW, THEREFORE, THE BOARD OF COUNTY COMMISSIONERS OF THE COUNTY OF WASHOE, IN THE STATE OF NEVADA, DO ORDAIN:

Section 1. Section 2 of Ordinance No. 1000 is hereby amended to read as follows:

“Section 2. A. The boundaries of the District with respect to the fee for remediation imposed in 1998 are the wholesale and retail water service area of Sierra Pacific Power Company as more specifically detailed in the District Boundaries on file with the County Clerk prior to September 16, 1997, but excluding therefrom (a) the properties listed on the “List of Properties Excluded from District 24 Boundaries” as filed with the County Clerk on June 16, 1998; (b) the properties listed on the Second 1998 Exclusion List, as filed with the County Clerk on April 21, 1999 and (c) and (c) the properties listed on the Second Exclusion List as filed with the Clerk on April 24, 2001.

B. The boundaries of the District with respect to the fee for remediation imposed in 1999 are the wholesale and retail water service area of Sierra Pacific Power Company as more specifically detailed in the District Boundaries on file with the County Clerk prior to September 16, 1997 and further including in the District boundaries all properties in the area described in the 1999 Addition List as filed with the County Clerk on April 21, 1999, but excluding from the District Boundaries the properties listed on the First 1999 Exclusion List as filed with the County Clerk on April 21, 1999 and as supplemented with the Supplemental 1999 List of Additional Excluded Parcels filed with

the County Clerk on June 22, 1999 and as supplemented by the Second 1999 Exclusion List filed with the Clerk on May 2, 2000 and by the Second Exclusion List as filed with the Clerk on April 24, 2001.

C. The boundaries of the District with respect to the fee for remediation imposed in 2000 are the wholesale and retail water service area of Sierra Pacific Power Company as more specifically detailed in the District Boundaries on file with the County Clerk prior to September 16, 1997 and further including in the District Boundaries all properties in the area described in the 2000 Addition List as filed with the County Clerk on May 2, 2000, but excluding from the District Boundaries the properties listed on the First 2000 Exclusion List as filed with the County Clerk on May 2, 2000, and the Second Exclusion List filed with the County Clerk on April 24, 2001.

D. The boundaries of the District with respect to the fee for remediation imposed in 2001 are the wholesale and retail water service area of Sierra Pacific Power Company as more specifically detailed in the District Boundaries on file with the County Clerk prior to September 16, 1997 and further including in the District Boundaries all properties in the area described in the 2001 Addition List as filed with the County Clerk on April 24, 2001, but excluding from the District Boundaries the properties listed on the First 2001 Exclusion List as filed with the County Clerk on April 24, 2001.

E. The boundaries of the District with respect to the fee for remediation imposed in 2002 are the wholesale and retail water service area of Sierra Pacific Power Company (of the Truckee Meadows Water Authority, after the acquisition of Sierra Pacific Power Company's water business by the Truckee Meadows Water Authority), as more specifically detailed in the District Boundaries on file with the County Clerk prior to September 16, 1997 and further including in the District Boundaries all properties in the area described in the 2002 Addition List as filed with the County Clerk on April 23, 2002, but excluding from the District

Boundaries the properties listed on the First 2002 Exclusion List as filed with the County Clerk on April 23, 2002 and excluding from the District boundaries the properties listed on the Second 2002 Exclusion List as filed with the County Clerk on April 21, 2003.

F. The boundaries of the District with respect to the fee for remediation imposed in 2003 are the wholesale and retail water service area of the Truckee Meadows Water Authority, as more specifically detailed in the District Boundaries on file with the County Clerk prior to September 16, 1997 and further including in the District Boundaries all properties in the area described in the 2003 Addition List as filed with the County Clerk on April 21, 2003, but excluding from the District Boundaries the properties listed on the First 2002 Exclusion List as filed with the County Clerk on April 21, 2003 and excluding from the District boundaries the properties listed on the Second 2003 Exclusion List as filed with the County Clerk on April 22, 2004.

G. The boundaries of the District with respect to the fee for remediation imposed in 2004 are the wholesale and retail water service area of the Truckee Meadows Water Authority as more specifically detailed in the District Boundaries on file with the County Clerk prior to September 16, 1997 and further including in the District Boundaries all properties in the area described in the 2004 Addition List as filed with the County Clerk on April 22, 2004, but excluding from the District Boundaries the properties listed on the First 2004 Exclusion List as filed with the County Clerk on April 22, 2004 and excluding from the District boundaries the properties listed on the Second 2004 Exclusion List as filed with the County Clerk on April 19, 2005.

H. The boundaries of the District with respect to the fee for remediation imposed in 2005 are the wholesale and retail water service area of the Truckee Meadows Water Authority as more specifically detailed in the District Boundaries on file with the County Clerk prior to September 16, 1997 and further including in the District Boundaries all properties in the area described in the 2005 Addition List as filed with the County Clerk

on April 19, 2005, but excluding from the District Boundaries the properties listed on the First 2005 Exclusion List as filed with the County Clerk on April 19, 2005 and excluding from the District boundaries the properties listed on the Second 2005 Exclusion List as filed with the County Clerk on April 25, 2006.

I. The boundaries of the District with respect to the fee for remediation imposed in 2006 are the wholesale and retail water service area of the Truckee Meadows Water Authority as more specifically detailed in the District Boundaries on file with the County Clerk prior to September 16, 1997 and further including in the District Boundaries all properties in the area described in the 2006 Addition List as filed with the County Clerk on April 25, 2006, but excluding from the District Boundaries the properties listed on the First 2006 Exclusion List as filed with the County Clerk on April 25, 2006 and excluding from the District boundaries the properties listed on the Second 2006 Exclusion List as filed with the County Clerk on April 24, 2007.

J. The boundaries of the District with respect to the fee for remediation imposed in 2007 are the wholesale and retail water service area of the Truckee Meadows Water Authority as more specifically detailed in the District Boundaries on file with the County Clerk prior to September 16, 1997 and further including in the District Boundaries all properties in the area described in the 2007 Addition List as filed with the County Clerk on April 24, 2007, but excluding from the District Boundaries the properties listed on the First 2007 Exclusion List as filed with the County Clerk on April 24, 2007, and excluding from the District boundaries the properties listed on the Second 2007 Exclusion List as filed with the County Clerk on April 22, 2008.

K. The boundaries of the District with respect to the fee for remediation imposed in 2008 are the wholesale and retail water service area of the Truckee Meadows Water Authority as more specifically detailed in the District Boundaries on file with the County Clerk prior to September 16, 1997 and further including in the District Boundaries all properties in the area

described in the 2008 Addition List as filed with the County Clerk on April 22, 2008, but excluding from the District Boundaries the properties listed on the First 2008 Exclusion List as filed with the County Clerk on April 22, 2008, and excluding from the District boundaries the properties listed on the Second 2008 Exclusion List as filed with the County Clerk on April 22, 2009.

L. The boundaries of the District with respect to the fee for remediation imposed in 2009 are the wholesale and retail water service area of the Truckee Meadows Water Authority as more specifically detailed in the District Boundaries on file with the County Clerk prior to September 16, 1997 and further including in the District Boundaries all properties in the area described in the 2009 Addition List as filed with the County Clerk on April 22, 2009, but excluding from the District Boundaries the properties listed on the First 2009 Exclusion List as filed with the County Clerk on April 22, 2009 and excluding from the District boundaries the properties listed on the Second 2009 Exclusion List as filed with the County Clerk on April 27, 2010.

M. The boundaries of the District with respect to the fee for remediation imposed in 2010 are the wholesale and retail water service area of the Truckee Meadows Water Authority as more specifically detailed in the District Boundaries on file with the County Clerk prior to September 16, 1997 and further including in the District Boundaries all properties in the area described in the 2010 Addition List as filed with the County Clerk on April 19, 2010, but excluding from the District Boundaries the properties listed on the First 2010 Exclusion List as filed with the County Clerk on April 27, 2010.

N. The boundaries of the District with respect to the fee for remediation imposed in 2011 are the wholesale and retail water service area of the Truckee Meadows Water Authority as more specifically detailed in the District Boundaries on file with the County Clerk prior to September 16, 1997, and a portion of the wholesale and retail service area of Washoe County's Department of Water Resources, as more specifically detailed in the

description of the areas proposed to be added to the District in 2011, and further including in the District Boundaries all properties in the area described in the 2011 Addition List as filed with the County Clerk on April 19, 2011, but excluding from the District Boundaries the properties listed on the First 2011 Exclusion List as filed with the County Clerk on April 19, 2011.”

O. The boundaries of the District with respect to the fee for remediation imposed in 2012 are the wholesale and retail water service area of the Truckee Meadows Water Authority as more specifically detailed in the District Boundaries on file with the County Clerk prior to September 16, 1997, and a portion of the wholesale and retail service area of Washoe County’s Department of Water Resources, as more specifically detailed in the description of the areas proposed to be added to the District in 2012, and further including in the District Boundaries all properties in the area described in the 2012 Addition List as filed with the County Clerk on April 30, 2012, but excluding from the District Boundaries the properties listed on the First 2012 Exclusion List as filed with the County Clerk on April 10, 2012.”

P. The boundaries of the District with respect to the fee for remediation imposed in 2013 are the wholesale and retail water service area of the Truckee Meadows Water Authority as more specifically detailed in the District Boundaries on file with the County Clerk prior to September 16, 1997, and a portion of the wholesale and retail service area of the water utility of Washoe County’s Community Service Department, as more specifically detailed in the description of the areas proposed to be added to the District in 2013, and further including in the District Boundaries all properties in the area described in the 2013 Addition List as filed with the County Clerk on April 26, 2013, but excluding from the District Boundaries the properties listed on the First 2013 Exclusion List as filed with the County Clerk on April 9, 2013.”

Q. The boundaries of the District with respect to the fee for remediation imposed in 2014 are the wholesale and retail water service area of the Truckee Meadows Water Authority as

more specifically detailed in the District Boundaries on file with the County Clerk prior to September 16, 1997, and a portion of the wholesale and retail service area of the water utility of Washoe County's Community Service Department, as more specifically detailed in the description of the areas proposed to be added to the District in 2014, and further including in the District Boundaries all properties in the area described in the 2014 Addition List as filed with the County Clerk on April 25, 2014, but excluding from the District Boundaries the properties listed on the First 2014 Exclusion List as filed with the County Clerk on April 8, 2014."

R. The boundaries of the District with respect to the fee for remediation imposed in 2015 are the wholesale and retail water service area of the Truckee Meadows Water Authority as more specifically detailed in the District Boundaries on file with the County Clerk prior to September 16, 1997, and a portion of the wholesale and retail service area of the water utility of Washoe County's Community Service Department, as more specifically detailed in the description of the areas proposed to be added to the District in 2015, and further including in the District Boundaries all properties in the area described in the 2015 Addition List as filed with the County Clerk on April 24, 2015, but excluding from the District Boundaries the properties listed on the First 2015 Exclusion List as filed with the County Clerk on April 14, 2015."

Section 2. All actions, proceedings, matters and things heretofore taken, had and done by the Board and the officers of the County (not inconsistent with the provisions of this Ordinance), concerning the District, is ratified, approved and confirmed.

Section 3. The officers of the County are authorized and directed to take all action necessary or appropriate to effectuate the provisions of this Ordinance, including without limiting the generality of the foregoing, the preparation of all necessary documents, legal proceedings and other items necessary or desirable for developing and carrying out the plan for remediation, and the preparation of recommendations to the Board of the cost thereof and

appointment of such costs among the properties in the District. This section does not authorize the execution of any contracts to carry out the plan for remediation without Board approval.

Section 4. All ordinances, resolutions, bylaws and orders, or parts thereof, in conflict with the provisions of this Ordinance are hereby repealed to the extent only of such inconsistency. This repealer shall not be construed to revive any ordinance, resolution, bylaw or order, or part thereof, heretofore repealed.

Section 5. In accordance with NRS § 244.100 and NRS § 540A.262, this Ordinance when first proposed is to be read by title to the Board, immediately after which several copies of the proposed Ordinance are to be filed with the office of the County Clerk for public examination; thereafter, the County Clerk is authorized and directed to give notice of the filing together with the title of the Ordinance and an adequate summary of the Ordinance, and the date upon which a public hearing will be held on such ordinance by publication at least once in the Reno Gazette-Journal, i.e., a newspaper published and having general circulation in the County, at least fifteen (15) days before the date set for such hearing, i.e., at least fifteen (15) days before the 9th day of June, 2015, such publication to be in substantially in the following form:

(Form of Publication of Notice of Filing of Bill for an Ordinance)

Bill No. _____

Notice of Public Hearing Before

The Washoe County Board of County Commissioners

NOTICE IS HEREBY GIVEN that the Board of County Commissioners of Washoe County, Nevada, will hold a public hearing at the Commissioners' Chambers Washoe County Administration Complex, 1001 East Ninth Street, Reno, Nevada, at 6:00 p.m., on Tuesday, the 9th day of June, 2015, for the purpose of hearing objections to the adoption of a proposed ordinance. At such hearing, interested persons may present their views. The Ordinance is entitled:

BILL NO. ____

ORDINANCE NO. _____

(of Washoe County, Nevada)

AN ORDINANCE AMENDING ORDINANCE NO. 1000 IN ORDER TO CHANGE THE BOUNDARIES OF DISTRICT NO. 24 (GROUNDWATER REMEDIATION); AND PROVIDING OTHER MATTERS RELATING THERETO.

An adequate summary of the Ordinance is as follows:

The preambles of the Ordinance recite that the Board of County Commissioners has created Washoe County, Nevada, Special Assessment District No. 24 for the purpose of remediating the quality of water at various other matters in connection therewith, and make certain findings.

The ordaining clause is then set forth.

Section 1 amends the boundaries of the District with respect to the fee collected in 2014 and 2015.

Sections 2, 3 and 4 ratify, approve and confirm all consistent prior action taken in connection with the District; authorize the County officials to take any action necessary to effectuate the Ordinance; and provide a repealer clause for conflicting provisions.

Sections 5, 6 and 7 provide for notice by publication of the June 9, 2015 hearing on the Ordinance, and for this summary of the provisions of the Ordinance; provide that the Ordinance shall be in effect from and after its publication for two weeks following its final

adoption on June 9, 2015; provide the form for such publication which includes the names of the Commissioners voting for and against the adoption of the Ordinance; and provide a severability clause.

Copies of the proposed ordinance are on file in the office of the Washoe County Clerk at the Washoe County Administrative Complex, 1001 East 9th Street, Reno, Nevada, for public examination. The Board shall adopt or reject the Ordinance (or the Ordinance as amended) within 35 days after the date of the final public hearing.

IN WITNESS WHEREOF, the Board of County Commissioners of Washoe County, Nevada, has ordered this notice to be published.

DATED this May 12, 2015.

/s/ Nancy Parent
County Clerk

(SEAL)

(End of Form for Publication)

Section 6. This Ordinance shall be in effect from and after its publication as hereinafter provided, and after this Ordinance is signed by the Chairman of the Board and attested and sealed by the County Clerk, this Ordinance shall be published by title only, together with the names of the Commissioners voting for or against its passage, and with a statement that typewritten copies of said Ordinance are available for inspection by all interested parties at the office of the County Clerk, such publication to be made in the Reno Gazette-Journal, a newspaper published and having general circulation in the County, at least once a week for a period of two (2) weeks by two (2) insertions, pursuant to NRS § 244.100 and all laws thereunto enabling, such publication to be in substantially the following form:

(Form for Publication After Final Adoption of Ordinance)

BILL NO. ____

ORDINANCE NO. _____

AN ORDINANCE AMENDING ORDINANCE NO. 1000 IN ORDER TO CHANGE THE BOUNDARIES OF DISTRICT NO. 24 (GROUNDWATER REMEDIATION); AND PROVIDING OTHER MATTERS RELATING THERETO.

PUBLIC NOTICE IS HEREBY GIVEN that typewritten copies of the above-numbered and entitled Ordinance are available for inspection by the interested parties at the office of the County Clerk of Washoe County, Nevada, at her office at the County Administrative Complex, 1001 East 9th Street., Reno, Nevada; and that said Ordinance was proposed by Commissioner _____ on May 12, 2015, and following a public hearing, was passed and adopted without amendment at a regular meeting held not more than 35 days after the close of the hearing, i.e., at the regular meeting on June 9, 2015, by the following vote of the Board of County Commissioners:

Those Voting Aye:

Those Voting Nay:

Those Absent:

This Ordinance shall be in full force and effect from and after June ____, 2015, i.e., the date of the second publication of such Ordinance by its title only.

IN WITNESS WHEREOF, the Board of County Commissioners of Washoe County, Nevada, has caused this Ordinance to be published by title only.

DATED this June 9, 2015.

/s/ Marsha Berkgigler
Chair
Board of County Commissioners
Washoe County, Nevada

(SEAL)

Attest:

/s/ Nancy Parent
County Clerk

Section 7. If any section, paragraph, clause or other provision of this Ordinance shall for any reason be held to be invalid or unenforceable, the invalidity or unenforceability of such section, paragraph, clause or other provision shall not affect any of the remaining provisions of this Ordinance.

Proposed on the 12th day of May, 2015.
Proposed by Commissioner _____.
Passed the 9th day of June, 2015.

Those Voting Aye:

Those Voting Nay:

Those Absent:

Chair
Board of County Commissioners
Washoe County, Nevada

(SEAL)

Attest:

County Clerk

This Ordinance shall be in force and effect from and after the _____ day of June, 2015, i.e., the date of the second publication of such Ordinance by its title only.

STATE OF NEVADA)
) ss.
COUNTY OF WASHOE)

I, Nancy Parent, am the duly chosen and qualified Clerk of Washoe County, and in the performance of my duties as Clerk do hereby certify:

1. The foregoing pages are a full and correct copy of an ordinance introduced and read by title at the Board of County Commissioners of the County (the "Board") held on May 12, 2015 and adopted on June 9, 2015 which relates to District No. 24 (Groundwater Remediation). Minutes of the hearing on such District held on May 12, 2015 and of the hearing on the Ordinance held on June 9, 2015 are attached as Exhibits A and B, respectively. Except as recited in this paragraph, no actions were taken concerning such District at such meetings. The copy of such ordinance is true, correct, compared copy of the original proposed and adopted at such meetings.

2. The members of the Board voted on such ordinance as set forth in the ordinance.

3. An affidavit evidencing notice of filing of such ordinance is attached as Exhibit E and an affidavit of publication of the notice of adoption of the ordinance is attached hereto as Exhibit F.

IN WITNESS WHEREOF, I have hereunto set my hand this June 9, 2015.

County Clerk

The undersigned does hereby certify:

1. All members of the Board were given due and proper notice of the meetings held on May 12, 2015 and June 9, 2015.

2. Public notice of such meetings were given and such meetings were held and conducted in full compliance with the provisions of NRS § 241.020 and NRS § 540A.262. A copy of the notices of meeting and excerpts from the agendas for the meetings relating to the

ordinance, as posted no later than 9:00 a.m. at least 3 working days in advance of the meetings at the Board's office, the County's website, the Nevada Public Notice website, and three other locations, i.e., at:

- (i) Washoe County Administration Complex
1001 East Ninth Street
Reno, Nevada
- (ii) Washoe County Courthouse
75 Court Street
Reno, Nevada
- (iii) Washoe County Library
301 South Center Street
Reno, Nevada
- (iv) Justice Court
1675 E. Prater Way #107
Sparks, Nevada

are attached as Exhibits "C" and "D."

3. No later than 9:00 a.m. at least 3 working days before such meetings, such notices were mailed to each person, if any, who has requested notice of meetings of the Board in compliance with NRS § 241.020(3)(b) by United States Mail, or if feasible and agreed to by the requestor, by electronic mail.

IN WITNESS WHEREOF, I have hereunto set my hand and the seal of Washoe County, Nevada, this June 9, 2015.

County Manager (or representative thereof)
Washoe County, Nevada

(SEAL)

EXHIBIT "A"

**(Attach Copy of Minutes of May 12 Hearing on
District No. 24 Boundary Amendment)**

EXHIBIT "B"

(Attach Minutes of June 9 Hearing on Ordinance)

EXHIBIT "C"

(Attach Copy of Notice of May 12 Meeting)

EXHIBIT "D"

(Attach Copy of Notice of June 9 Meeting)

EXHIBIT "E"

(Attach Affidavit of Publication of Notice of Filing of Amendatory Ordinance)

EXHIBIT "F"

(Attach Affidavit of Publication of Title of Amendatory Ordinance Twice)

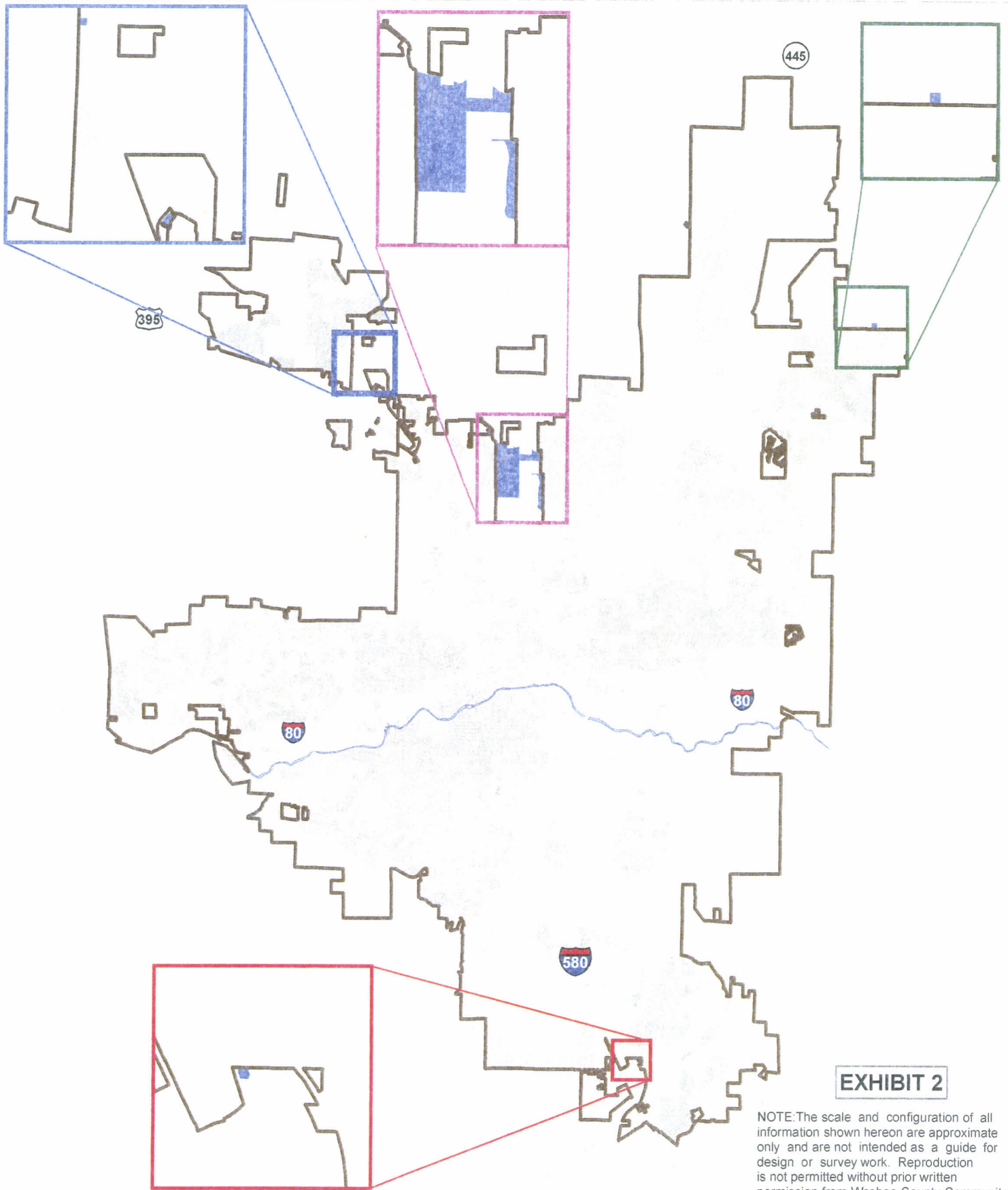


EXHIBIT 2

NOTE: The scale and configuration of all information shown hereon are approximate only and are not intended as a guide for design or survey work. Reproduction is not permitted without prior written permission from Washoe County Community Services Department.

- Parcels added into the CTMRD Service Area Boundary
- 2014 Fee Year Boundary

**CENTRAL TRUCKEE MEADOWS
REMEDIATION DISTRICT
2015 FEE YEAR BOUNDARY**
(Parcels added or removed in calendar year 2014)

March 2015



Exhibit 3

Fee Adoption Ordinance

Summary - An ordinance levying a fee in Washoe County, Nevada District No. 24 (Groundwater Remediation), ratifying action taken by County officers, and providing other matters related thereto.

BILL NO.

ORDINANCE NO. ____

AN ORDINANCE IMPOSING A FEE ON THE PARCELS OF LAND IN WASHOE COUNTY, NEVADA DISTRICT NO. 24 (GROUNDWATER REMEDIATION) TO PAY THE COSTS OF DEVELOPING AND CARRYING OUT A PLAN FOR REMEDIATION; AND PRESCRIBING OTHER MATTERS RELATING THERETO.

WHEREAS, Washoe County in the State of Nevada (the “County” and “State,” respectively), is a county organized and operating under the laws of the State of Nevada (the “State”); and

WHEREAS, subsection 1 of Nevada Revised Statutes (“NRS”) § 540A.250 provides that the Board of County Commissioners (the “Board”) shall create a district for the remediation of the quality of water if the county or district health officer (the “Health Officer”) or Administrator of the Division of Environmental Protection of the State Department of Conservation and Natural Resources (the “Division”) certifies in writing to a Board that a condition exists in an area of the region which is affecting or will affect the quality of water that is available for municipal, industrial and domestic use within the region; and

WHEREAS, the Board has received certifications in writing (the “Certification”) as described to in subsection 1 of NRS § 540A.250; and

WHEREAS, subsection 2 of NRS § 540A.250 provides that on receipt of the Certification, the Board must proceed in cooperation with the Health Officer and the Division to verify the existence and extent of the condition and establish the appropriate boundaries of a district for the remediation of the quality of water (the “District”); and

WHEREAS, subsection 3 of NRS § 540A.250 provides that:

“The District created pursuant to this section must include, without limitation:

(a) The area where the condition which requires remediation is determined by the Board to be present, or for which remediation is determined by the Board to be necessary, including any area to which the condition is expected to migrate unless remediation is carried out; and

(b) If the Board determines that the condition which requires remediation affects the quantity or quality of drinking water within the region, the wholesale and retail service area of any provider of water that has used or uses for any portion of its supply wells located in the area described in paragraph (a)”; and

WHEREAS, pursuant to NRS § 540A.250 and the Certification so received, the Board has proceeded in cooperation with the Health Officer and the Division of Environmental Protection to verify the existence of the condition and establish appropriate boundaries of the District; and

WHEREAS, pursuant to NRS § 540A.250, the Board has had prepared for it a plan for remediation designated the “Central Truckee Meadows Remediation District Final Work Plan February 22, 1996” as updated by the “Central Truckee Meadows Remediation District Remediation Management Plan” dated October 28, 2002 (as updated, the “Plan for Remediation”); and

WHEREAS, the Plan for Remediation (including the update) has been submitted to the Division and approved by the Division pursuant to Subsection 1 of NRS 540A.260; and

WHEREAS, the Plan for Remediation indicates that, and based upon such plan the Board has determined that, the condition which requires remediation affects the quality of drinking water within the region; and

WHEREAS, the Board pursuant to Ordinance No. 1000 adopted and approved on November 14, 1997, as amended by ordinances adopted and approved on June 16, 1998, June 22, 1999, June 12, 2000, June 12, 2001, June 11, 2002, June 9, 2003, June 22, 2004, June 14, 2005, June 13, 2006, June 12, 2007, June 10, 2008, June 9, 2009, June 22, 2010, June 14, 2011, June 12, 2012, June 11, 2013, and June 17, 2014 (as amended, the “Creation Ordinance”), created a district (the “District” or “District No. 24”) for the remediation of the quality of water pursuant

to NRS § 540A.250 through § 540A.285 (the “Act”) whose boundaries in accordance with NRS § 540A.250 include the wholesale and retail water service area of Sierra Pacific Power Company (herein “Sierra Pacific”) and its successors in the water business, the Truckee Meadows Water Authority (“TMWA”), which was in the case of Sierra Pacific and is in the case of TMWA, and further includes a portion of the wholesale and retail water service area of Washoe County’s Community Service Department, both of which are providers of water service that have used and use for at least a portion of their water supply, wells located in the area where the condition of PCE exists in the groundwater and where remediation is required as hereby determined by the Board, based upon the Plan for Remediation; and

WHEREAS, the Board has heretofore determined and does hereby declare that a portion of the cost of developing and carrying out the plan for remediation has been deferred with the proceeds of bonds (the “Bonds”) which have been heretofore retired; and

WHEREAS, the Board has heretofore determined that the operation and maintenance in connection with carrying out the Plan for Remediation is to be paid by a fee imposed on the properties in the District; and

WHEREAS, in the Creation Ordinance, the Board determined that the condition which requires remediation affects the quality of drinking water within the region and therefor, pursuant to subsection 1(a) of NRS § 540A.265, the fee apportioned must be based on a percentage of the total amount billed in the preceding calendar year to each parcel of property within the District for water by the provider of retail water service to the parcel of property; and

WHEREAS, the Board has determined and hereby determines that the Bonds have been retired, and therefore no amount will be included in the fee to pay principal and interest on the Bonds; and

WHEREAS, the Board has also determined that the costs of developing and carrying out the plan for remediation is to be paid from the fees collected through 2014; and

WHEREAS, the Board has determined and hereby determines that the estimated amount required to pay TMWA for one year's operation and maintenance (“O & M”) costs as provided in the County's agreement with Sierra Pacific, to which TMWA has succeeded, is \$300,000; and

WHEREAS, the Board has determined and hereby determines that the annual amount necessary to pay the one year's cost of additional expenses and monitoring, administration, collection and other continuing costs in furtherance of and in connection with developing and carrying out the Plan for Remediation (collectively, "Ongoing Costs") is \$2,872,051.00 ; and

WHEREAS, it is therefore necessary to raise \$1,250,000 in fiscal year 2015-2016 (the Fiscal Years' Amount) to pay one year's O&M and Ongoing Costs; and

WHEREAS, the Board has determined at this time that considering the nature of the capital projects previously funded with the Bonds and the nature of the Ongoing Costs being collected at this time, it is appropriate to weight or adjust the amount billed pursuant to paragraph (b) of subsection 1 of NRS § 540A.265, and consequently that the methods of weighting or adjusting outlined in paragraphs (b) and (c) of such subsection are being applied to the fee being apportioned by this ordinance, and the Board hereby finds and declares that such apportionment is just and equitable; and

WHEREAS, there has been submitted to staff of the County a list of all parcels of land in the District (excluding all property owned by the federal government), together with the amount billed for water to those parcels in calendar year ending December 31, 2014, in which, in the cases of properties within the District where retail water service was not provided for a full calendar year, or where a full calendar year's billing was not available, the estimated amount billed for water for a full calendar year was provided or developed, taking into account a partial year's billing extended to 12 months, or an average of fees on parcels of property within comparable zonings or uses; and

WHEREAS, there has been prepared and filed with the County Clerk on April 24, 2015 a list, entitled "District No. 24 (Groundwater Remediation) 2014 Fee Apportionment List" (the "Fee Apportionment List"), of each parcel of property within the District (excluding parcels owned by the United States) and an apportionment of the Fiscal Years' Amount to be raised by the fees described above to each parcel of land in the District, which apportionment is based on the amount billed to that parcel for water, weighted and adjusted as described in paragraphs (b), (c) and (d) of subsection 1 of NRS § 540A.265; and

WHEREAS, the Board has determined and hereby determines that the apportionment provided in the list described above is fair, just and equitable and is hereby adopted.

NOW, THEREFORE, THE BOARD OF COUNTY COMMISSIONERS OF THE COUNTY OF WASHOE, IN THE STATE OF NEVADA, DO ORDAIN:

Section 1. All actions, proceedings, matters and things heretofore taken, had and done by the County and the officers thereof (not inconsistent with the provisions of this Washoe County, Nevada District No. 24 (Groundwater Remediation) Fee Imposition Ordinance (the “Ordinance”)) concerning the District and the Plan of Remediation, and the imposition and apportionment of a fee therefore are ratified, approved and confirmed.

Section 2. For the purpose of paying the cost of developing and carrying out the Plan for Remediation, there is hereby imposed against each of the lots, tracts and parcels of land in the District (except property owned by the Federal Government), the amount shown for that tract or parcel of land in the Fee Apportionment List as filed in the office of the County Clerk on April 24, 2015. The Board hereby finds and determines and to impose and apportion the fee in the amounts shown in the Fee Apportionment List, all in accordance with the Act.

Section 3. In accordance with subsection 2 of NRS § 540A.265, the fee imposed by this ordinance shall be collected by the County Treasurer with the general taxes of the County, and payment therefore must be enforced in the same manner and with the same remedies as provided for the collection of general taxes. The amount of the fee shall be due with the first installment of property taxes and shall be payable in full on that date. There shall not be any option to pay the fee in installments. The Clerk is hereby directed to certify a copy of the Fee Apportionment List to the County Treasurer for collection purposes.

Section 4. The officers of the County are authorized and directed to take all action necessary or appropriate to effectuate the provisions of this ordinance, including without limiting the generality of the foregoing, the preparation of all necessary documents, legal proceedings and other items necessary or desirable to impose and apportion the fee provided herein.

Section 5. All ordinances, resolutions, bylaws and orders, or parts thereof, in conflict with the provisions of this ordinance are hereby repealed to the extent only of such inconsistency. This repealer shall not be construed to revive any ordinance, resolution, bylaw or order, or part thereof, heretofore repealed.

Section 6. In accordance with NRS § 244.100 and 540A.262, this ordinance when first proposed is to be read by title to the Board, immediately after which several copies of the proposed ordinance are to be filed with the office of the County Clerk for public examination; thereafter, the County Clerk is authorized and directed to give notice of the filing together with the title of the ordinance and an adequate summary of the ordinance, and the date upon which a public hearing will be held on such ordinance by publication at least once in the Reno Gazette-Journal, i.e., a newspaper published and having general circulation in the County, at least fifteen (15) working days before the date set for such hearing, i.e., at least fifteen (15) working days before the 9th day of June, 2015, such publication to be in substantially in the following form:

(Form of Publication of Notice of Filing of Bill for an Ordinance)

Bill No. _____

Notice of Public Hearing Before

The Washoe County Board of County Commissioners

NOTICE IS HEREBY GIVEN that the Board of County Commissioners of Washoe County, Nevada, will hold a public hearing at the Commissioners' Chambers, Washoe County Administration Complex, 1001 East Ninth Street, Reno, Nevada, at 6:00 p.m., on Tuesday, the 9th day of June 2015, for the purpose of hearing objections to the adoption of a proposed ordinance. At such hearing, interested persons may present their views. The ordinance is entitled:

BILL NO. _____

ORDINANCE NO. _____

(of Washoe County, Nevada)

AN ORDINANCE IMPOSING A FEE ON THE PARCELS OF LAND IN WASHOE COUNTY, NEVADA DISTRICT NO. 24 (GROUNDWATER REMEDIATION) TO PAY THE COSTS OF DEVELOPING AND CARRYING OUT A PLAN FOR REMEDIATION; AND PRESCRIBING OTHER MATTERS RELATING THERETO.

An adequate summary of the ordinance is as follows:

The preambles of the ordinance recite that the Board of County Commissioners has created Washoe County, Nevada, District No. 24 (the "District") for the purpose of remediating the quality of water and various other matters in connection therewith, and recite the costs anticipated to be incurred therefore and the appropriation of those costs on the various parcels of land in the District, and make certain findings.

The ordaining clause is then set forth.

Section 1 ratifies the action previously taken and Section 2 imposes and apportions a fee for remediation on each parcel of land in the District except parcels owned by the Federal Government.

Section 3 provides for collection of the fee with general taxes.

Sections 4 and 5 authorize the County officials to take any action necessary to effectuate the ordinance; and provide a repealer clause for conflicting provisions.

Sections 6, 7 and 8 provide for notice by publication of the June 9, 2015 hearing on the ordinance, and for this summary of the provisions of the ordinance; provide that the ordinance shall be in effect from and after its publication for two weeks following its final adoption on June 9, 2015; provide the form for such publication which includes the names of the Commissioners voting for and against the adoption of the ordinance; and provide a severability clause.

Copies of the proposed ordinance are on file in the office of the Washoe County Clerk at the Washoe County Administrative Complex, 1001 East 9th Street,, Reno, Nevada, for public examination. The Board shall adopt or reject the ordinance (or the ordinance as amended) within 35 days after the date of the final public hearing.

IN WITNESS WHEREOF, the Board of County Commissioners of Washoe County, Nevada, has ordered this notice to be published.

Dated this May 12, 2015.

/s/ Nancy Parent
County Clerk

(SEAL)

(End of Form for Publication)

Section 7. This ordinance shall be in effect from and after its publication as hereinafter provided, and after this ordinance is signed by the Chairman of the Board and attested and sealed by the County Clerk, this ordinance shall be published by title only, together with the names of the Commissioners voting for or against its passage, and with a statement that typewritten copies of said ordinance are available for inspection by all interested parties at the office of the County Clerk, such publication to be made in the Reno Gazette-Journal, a newspaper published and having general circulation in the County, at least once a week for a period of two (2) weeks by two (2) insertions, pursuant to NRS § 244.100 and all laws thereunto enabling, such publication to be in substantially the following form:

(Form for Publication After Final Adoption of Ordinance)

BILL NO. _____

ORDINANCE NO. _____

AN ORDINANCE IMPOSING A FEE ON THE PARCELS OF LAND IN WASHOE COUNTY, NEVADA DISTRICT NO. 24 (GROUNDWATER REMEDIATION) TO PAY THE COSTS OF DEVELOPING AND CARRYING OUT A PLAN FOR REMEDIATION; AND PRESCRIBING OTHER MATTERS RELATING THERETO.

PUBLIC NOTICE IS HEREBY GIVEN that typewritten copies of the above-numbered and entitled ordinance are available for inspection by the interested parties at the office of the County Clerk of Washoe County, Nevada, at her office at the County Administrative Complex, 1001 East 9th Street., Reno, Nevada; and that said ordinance was proposed by Commissioner _____ on May 12, 2015, and following a public hearing, was passed and adopted without amendment at a regular meeting held not more than 35 days after the close of the hearing, i.e., at the regular meeting on June 9, 2015, by the following vote of the Board of County Commissioners:

Those Voting Aye:

Those Voting Nay:

Those Absent:

This ordinance shall be in full force and effect from and after June ____, 2015, i.e., the date of the second publication of such ordinance by its title only.

IN WITNESS WHEREOF, the Board of County Commissioners of Washoe County, Nevada, has caused this ordinance to be published by title only.

Dated June 9, 2015.

/s/ Marsha Berkgigler
Chair
Board of County Commissioners
Washoe County, Nevada

(SEAL)

Attest:

/s/ Nancy Parent
County Clerk

(End of Form of Publication)

Section 8. If any section, paragraph, clause or other provision of this Ordinance shall for any reason be held to be invalid or unenforceable, the invalidity or unenforceability of such section, paragraph, clause or other provision shall not affect any of the remaining provisions of this Ordinance.

Proposed on the 12th day of May, 2015.

Proposed by Commissioner _____.

Passed the 9th day of June, 2015.

Those Voting Aye:

Those Voting Nay:

Those Absent:

Chair
Board of County Commissioners
Washoe County, Nevada

(SEAL)

Attest:

County Clerk

This ordinance shall be in force and effect from and after the ____ day of June, 2015, i.e., the date of the second publication of such ordinance by its title only.

copy of the notices of meeting and excerpts from the agendas for the meetings relating to the ordinance, as posted no later than 9:00 a.m. at least 3 working days in advance of the meetings at the Board's office, the County's website, the Nevada Public Notice website, and three other locations, i.e., at:

- (i) Washoe County Administration Complex
1001 East Ninth Street
Reno, Nevada
- (ii) Washoe County Courthouse
75 Court Street
Reno, Nevada
- (iii) Washoe County Library
301 South Center Street
Reno, Nevada
- (iv) Justice Court
1675 E. Prater Way #107
Sparks, Nevada

are attached as Exhibits "C" and "D."

3. No later than 9:00 a.m. at least 3 working days before such meetings, such notices were mailed to each person, if any, who has requested notice of meetings of the Board in compliance with NRS 241.020(3)(b) by United States Mail, or if feasible and agreed to by the requestor, by electronic mail.

IN WITNESS WHEREOF, I have hereunto set my hand and the seal of Washoe County, Nevada, this June 9, 2015.

County Manager (or representative thereof)
Washoe County, Nevada

(SEAL)

EXHIBIT "A"

**(Attach Copy of Minutes of May 12 Hearing on
District No. 24 Boundary Amendment)**

EXHIBIT "B"

(Attach Minutes of June 9 Hearing on Ordinance)

EXHIBIT "C"

(Attach Copy of Notice of May 12 Meeting)

EXHIBIT "D"

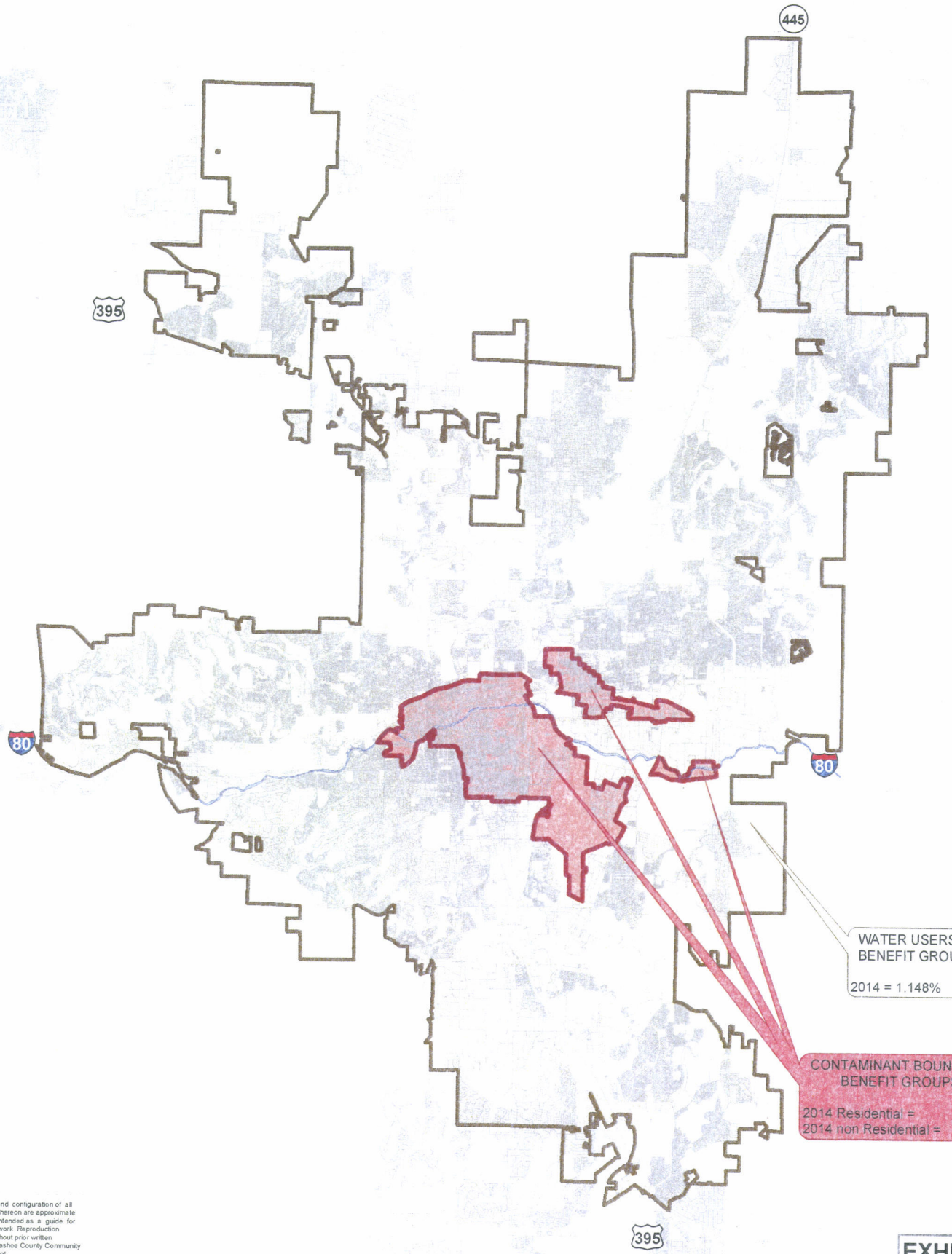
(Attach Copy of Notice of June 9 Meeting)

EXHIBIT "E"

(Attach Affidavit of Publication of Notice of Filing of Amendatory Ordinance)

EXHIBIT “F”

(Attach Affidavit of Publication of Title of Amendatory Ordinance Twice)



WATER USERS
BENEFIT GROUP
2014 = 1.148%

CONTAMINANT BOUNDARY
BENEFIT GROUPS
2014 Residential = 2.296%
2014 non Residential = 4.592%

NOTE: The scale and configuration of all information shown hereon are approximate only and are not intended as a guide for design or survey work. Reproduction is not permitted without prior written permission from Washoe County Community Services Department.

EXHIBIT 4

-  Contaminant Boundary
-  2015 Fee Year Boundary

**CENTRAL TRUCKEE MEADOWS
REMEDATION DISTRICT
FEE AREA MAP
2015**

April 2015



