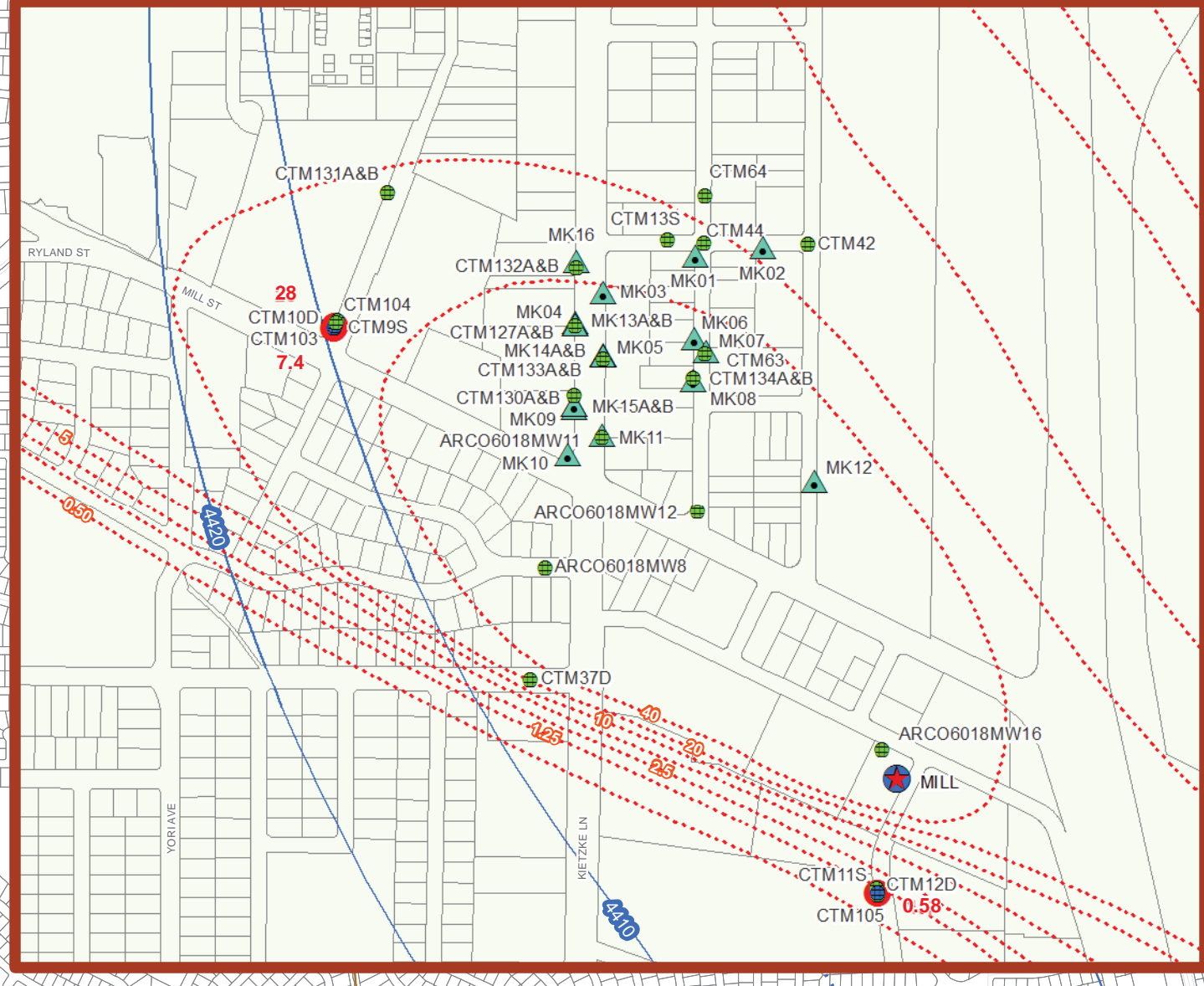


MILL KIETZKE AREA INSET MAP



SEE INSET MAP

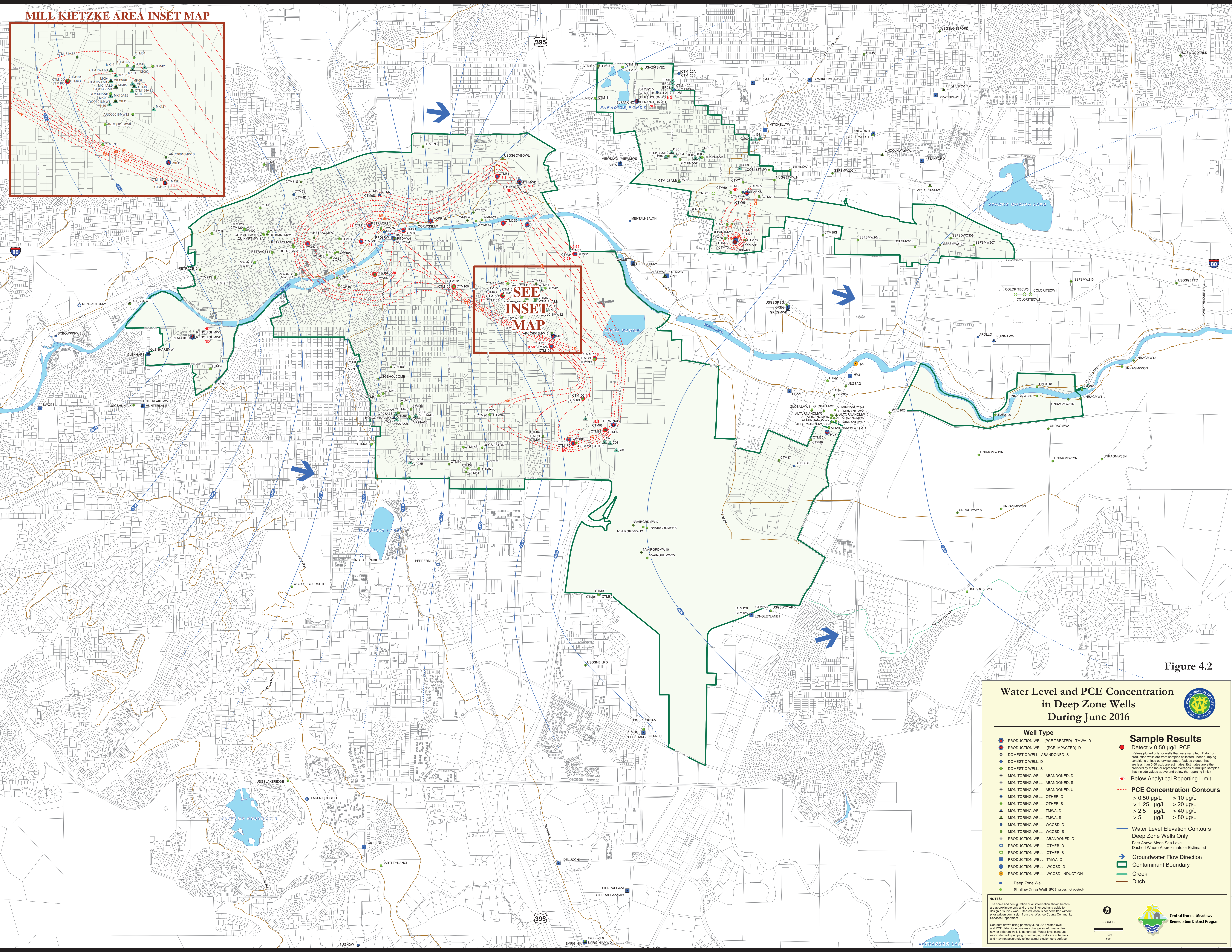


Figure 4.2

Water Level and PCE Concentration in Deep Zone Wells During June 2016

<p>Well Type</p> <ul style="list-style-type: none"> ● PRODUCTION WELL (PCE TREATED) - TMWA, D ● PRODUCTION WELL - (PCE IMPACTED), D ● DOMESTIC WELL - ABANDONED, S ● DOMESTIC WELL, D ● DOMESTIC WELL, S ● MONITORING WELL - ABANDONED, D ● MONITORING WELL - ABANDONED, S ● MONITORING WELL - ABANDONED, U ● MONITORING WELL - OTHER, D ● MONITORING WELL - OTHER, S ● MONITORING WELL - TMWA, D ● MONITORING WELL - TMWA, S ● MONITORING WELL - WCCSD, D ● MONITORING WELL - WCCSD, S ● PRODUCTION WELL - ABANDONED, D ● PRODUCTION WELL - OTHER, D ● PRODUCTION WELL - OTHER, S ● PRODUCTION WELL - TMWA, D ● PRODUCTION WELL - WCCSD, D ● PRODUCTION WELL - WCCSD, INDUCTION ● Deep Zone Well ● Shallow Zone Well (PCE values not posted) 	<p>Sample Results</p> <ul style="list-style-type: none"> ● Detect > 0.50 µg/L PCE <p><small>(Values plotted only for wells that were sampled. Data from production wells are from samples collected under pumping conditions unless otherwise stated. Values plotted that are less than 0.50 µg/L are estimates. Estimates are either provided by the lab or represent averages of multiple samples that include values above and below the reporting limit.)</small></p> <p>ND Below Analytical Reporting Limit</p> <p>PCE Concentration Contours</p> <table border="0"> <tr> <td>> 0.50 µg/L</td> <td>> 10 µg/L</td> </tr> <tr> <td>> 1.25 µg/L</td> <td>> 20 µg/L</td> </tr> <tr> <td>> 2.5 µg/L</td> <td>> 40 µg/L</td> </tr> <tr> <td>> 5 µg/L</td> <td>> 80 µg/L</td> </tr> </table>	> 0.50 µg/L	> 10 µg/L	> 1.25 µg/L	> 20 µg/L	> 2.5 µg/L	> 40 µg/L	> 5 µg/L	> 80 µg/L
> 0.50 µg/L	> 10 µg/L								
> 1.25 µg/L	> 20 µg/L								
> 2.5 µg/L	> 40 µg/L								
> 5 µg/L	> 80 µg/L								

NOTES:
 The scale and configuration of all information shown herein are approximate only and are not intended as a guide for design or survey work. Reproduction is not permitted without prior written permission from the Washoe County Community Services Department.

Contours drawn using primary June 2016 water level and PCE data. Contours may change as information from new or different wells is generated. Water level contours associated with pumping or recovering wells are schematic and may not accurately reflect actual piezometric surface.

Scale: 1:500 Feet

Central Truckee Meadows Remediation District Program