

RENO NEWSPAPERS, INC. Publishers of  
RENO GAZETTE-JOURNAL  
P.O. BOX 22000, Reno, Nevada 89520-2000  
PHONE: 702-788-6200 for general information or  
702-788-6394 for Legal Advertising Dept.

DESCRIPTION OF LEGAL ADVERTISING

Ord. 839

349008

TERMS: Please pay from this invoice. It is due upon presentation and is past due after 15 days.

Legal Ad. Cost 25.60

Extra Proofs

Notary Fee 2.00

Total Amt due 27.60

- Washoe County Clerk
- P.O. Box 11130
- Reno Nv. 89520

MONTH

1 2 3 4 5 6 7 8 9 10 11 12 13 14 15 16 17 18 19 20 21 22 23 24 25 26 27 28 29 30 31

December

x x

PROOF OF PUBLICATION

STATE OF NEVADA, ss.  
COUNTY OF WASHOE

Alice L. Buffaloe

being first duly sworn, deposes and says: That as the legal clerk of the RENO GAZETTE-JOURNAL, a daily newspaper published in Reno, Washoe County, State of Nevada, that the notice of County Ordinance

of which a copy is hereto attached, was first published in said newspaper in its issue dated the 16 day of Dec. 19 91 and, Dec. 23rd, the full period of 2 days, the last publication thereof being in the issue of Dec. 23rd. 19 91

Signed *Alice L. Buffaloe*

Subscribed and sworn to before me this

23rd. day of December, 19 91

*Joanne F. Wessel*  
Notary Public

NOTICE OF COUNTY ORDINANCE  
Ord. No. 839

NOTICE IS HEREBY GIVEN that Bill No. 1014, Ordinance No. 839, entitled AN ORDINANCE AMENDING THE WASHOE COUNTY CODE TO ESTABLISH NEW COUNTY COMMISSIONER DISTRICTS IN COMPLIANCE WITH 1991 LEGISLATIVE CHANGES TO NRS 244.014, AND PROVIDING OTHER MATTERS RELATING THERETO was introduced on November 19, 1991, and adopted on July 9, 1991, by Commissioners Dianne Cornwall, Tina Leighton, and Gene McDowell, with Commissioners Rene Reid and Larry Beck voting "no." Typewritten copies of the ordinance are available for inspection by all interested persons at the office of the County Clerk in the Courthouse located at 75 Court Street, Reno, Nevada. JUDI BAILEY, County Clerk 349008—Ord.839 Dec.16.23—ht133

JOANNE F. WESSEL  
Notary Public - State of Nevada  
Appointment Recorded in Washoe County  
MY APPOINTMENT EXPIRES NOV. 18, 1992

0839 ✓

SUMMARY: Amends Washoe County Code to establish new county commissioner districts.

BILL NO. 1014

ORDINANCE NO. 839

AN ORDINANCE AMENDING THE WASHOE COUNTY CODE TO ESTABLISH NEW COUNTY COMMISSIONER DISTRICTS IN COMPLIANCE WITH 1991 LEGISLATIVE CHANGES TO NRS 244.014; AND PROVIDING OTHER MATTERS PROPERLY RELATING THERETO.

THE BOARD OF COUNTY COMMISSIONERS OF THE COUNTY OF WASHOE DO ORDAIN:

SECTION 1. Section 5.015 of the Washoe County Code is hereby amended to read as follows:

5.015 County commissioner districts: Creation; election of county commissioners; filling of vacancy.

1. As used in this section "Assembly Districts" means those Washoe County assembly districts created by subsection 1 of NRS 218.080.

2. In compliance with chapter 244 of NRS and the Local Government Reapportionment Law (chapter 237 of NRS), five county commissioner districts in Washoe County are created as follows:

(a) County commissioner district No. 1 is composed of Assembly Districts Nos. 24 and 25.

(b) County commissioner district No. 2 is composed of Assembly Districts Nos. 23, 26 and that portion of 37 lying within Washoe County.

(c) County commissioner district No. 3 is composed of Assembly Districts Nos. 27 and 28.

(d) County commissioner district No. 4 is composed of Assembly Districts Nos. 30 and 31.

(e) County commissioner district No. 5 is composed of Assembly Districts Nos. 29, 32 and that portion of 34 lying within Washoe County.

3. At the general election in 1976 and every 4 years thereafter, there shall be elected one county commissioner from county commissioner district No. 1 and one county commissioner from county commissioner district No. 4, for terms of 4 years.

4. At the general election in 1978 and every 4 years thereafter, there shall be elected one county commissioner from county commissioner district No. 2, one county commissioner from county commissioner district No. 3 and one county commissioner from county commissioner district No. 5, for terms of 4 years.

5. The county commissioner districts set forth in subsection 1 above are effective until 11:59 p.m. on December 31, 1991. On January 1, 1992, beginning at 12:00 a.m., and in compliance with NRS 244.014, the districts set forth in subsection 1 are abolished and five new county commissioner districts in Washoe County are created. As used in this section, unless the context otherwise requires:

(a) "Block" means the smallest geographical unit whose boundaries were designated by the Bureau of the Census of the United States Department of Commerce in the precensus version of its topographically integrated geographic encoding and referencing system.

(b) "Block group" means a combination of blocks in a series, whose numbers begin with the same digit.

6. The county commissioner districts which take effect January 1, 1992 at 12:00 a.m. are as follows:

## (a) County commissioner district No. 1 is composed of:

(1) In Washoe County, in census tracts, 001005, 001101, 0013, 003302 and 003304.

(2) In Washoe County, in census tract 0003, blocks 124, 125, 126, 205, 206, 207, 208, 209, 210, 211, 216, 217, 218, 219, 220, 221, 222, 223, 224, 225, 226, 227, 228, 229, 230, 231, 232, 301, 302, 303, 304, 305, 306, 307, 308, 309, 310, 311, 312, 313, 314, 315, 316, 317, 318, 319, 320, 321, 322, 323, 324, 325, 326, 327 and 328

(3) In Washoe County, in census tract 0004, blocks 104, 119, 120, 121, 122, 123, 124, 125, 126, 127, 128, 129, 130, 131, 201, 202, 203, 204, 205, 206, 207, 208, 209, 210, 211, 212, 213, 214, 215, 216, 217, 218, 219, 220, 221, 222, 223, 224, 225, 227, 228, 229, 230, 231, 232, 301, 302, 303, 304, 305, 306, 307, 308, 309, 310, 311, 312, 313, 314, 315, 316, 317, 318, 319, 320, 321, 322, 323, 324, 325, 326, 327, 328, 329, 330, 331, 332, 402, 403, 404, 405, 406, 407, 408, 409, 410, 411, 413, 414, 423 and 424

(4) In Washoe County, in census tract 001003, blocks 101, 102, 103, 104, 105, 106, 107, 108, 109, 110, 111, 112, 113, 114, 115, 116, 201, 202A, 202B, 203, 204, 205A, 205B, 206A, 206B, 207, 208, 209, 210, 211, 301A, 301B, 302, 303, 304, 305, 306, 307, 308, 309, 310, 311, 401A, 401B, 402A, 402B, 402C, 402D, 403, 404, 405, 501A, 501B, 502, 503A, 503B, 504, 505A and 505B

(5) In Washoe County, in census tract 001004, blocks 101, 102, 103, 104, 201, 202, 203, 301, 302, 303, 304, 401, 402, 403 and 507

(6) In Washoe County, in census tract 001102, blocks 101A, 101B, 101C, 102, 103A, 103B, 104, 105, 106A, 106B, 107, 108A, 108B, 109, 110, 111, 112, 113, 114A, 114B, 114C, 115, 116A, 116B, 117, 118, 119, 120, 121, 122, 123A, 123B, 123C, 123D, 123E, 123F, 123G, 124, 125, 126, 127, 128B, 128C, 129, 130, 131, 132, 133A, 133B, 201, 202, 203, 204, 205, 206, 207, 208, 209, 210, 211, 212A, 212B, 213, 214, 215, 216, 217, 218, 219, 220, 221, 222, 223, 224, 225, 226A, 226B, 227A, 227B, 228, 229, 230, 301, 302, 303, 304, 305, 306, 307, 401, 402A, 402B, 402C, 403, 404, 405, 406A, 406B, 407, 501, 502, 503, 601, 602, 603, 604, 801B, 802, 803, 804, 805, 806 and 807

(7) In Washoe County, in census tract 001103, blocks 101A, 101B, 102A, 102B, 103A, 103B, 104, 105, 201, 202, 203, 301, 302, 303, 304, 305, 306, 307, 308, 309, 310, 311, 312, 313, 314, 315, 316, 401A, 401B, 402, 403, 404, 405, 406, 407A, 407B, 408, 409, 410, and 411

(8) In Washoe County, in census tract 0012, blocks 101A, 101B, 102A, 102B, 103A, 103B, 104A, 104B, 105, 106A, 106B, 107A, 107B, 403, 404A, 404B and 405

(9) In Washoe County, in census tract 0023, blocks 405B, 405C, 414A, 414B, 415, 416, 417, 418, 419, 420, 421, 422, 423, 424, 431A, 431B, 432, 433, 436, 443, 444, 445, 446, 447, 448, 449, 450, 451, 452, 453, 454, 455, 456 and 457

(10) In Washoe County, in census tract 002401, blocks 101A, 101C, 102, 103, 104, 105, 106, 107, 108A, 108B, 108C, 109, 110, 111, 112, 113, 114, 115, 116, 117, 118, 119, 120, 121, 122, 123, 124, 201, 202, 203, 204, 205, 206, 207, 208, 209, 210, 211, 212, 213, 214, 215, 216, 301, 302, 303, 304A, 304B, 305, 306, 307, 308, 309, 310, 311, 312, 313, 314, 315, 316, 317, 318, 319, 320, 401A, 401B, 401C, 401D,

401E, 401F, 401G, 402, 403, 404, 405, 406, 407, 408, 409, 410, 411, 412, 413, 414, 415 and 416

(11) In Washoe County, in census tract 002402, blocks 105A, 106A, 106B, 201, 202, 203A, 205, 206, 207A, 207B, 208, 301, 302, 303, 304, 305, 306, 307, 308, 309A and 309B

(12) In Washoe County, in census tract 0025, blocks 101B, 203A, 204, 205, 206, 207, 208, 209, 211, 212, 213, 214, 215, 302, 303, 304, 305, 306, 307, 308, 309, 313 and 314

(13) In Washoe County, in census tract 002603, blocks 604C and 608

(b) County commissioner district No. 2 is composed as follows:

(1) In Washoe County, in census tracts, 001002, 002202, 002204, 002205, and 0032.

(2) In Washoe County, in census tract 0009, blocks 111, 112, 113, 114, 115, 116, 117, 118, 119, 122, 123, 124 and 125

(3) In Washoe County, in census tract 001003, blocks 312A, 312B, 313, 314, 315, 316, 601, 602A, 602B, 602C, 602D, 603, 604, 605, 606, 607, 608, 609, 610, 611, 612, 613, 614, 615A, 615B, 701, 702, 703, 704, 801, 802, 803, 804, 805, 806, 807, 808, 809, 810, 811, 812, 813, 814 and 815

(4) In Washoe County, in census tract 001004, blocks 204, 205, 501, 502, 503, 504, 505, 506, 508, 601, 602, 603, 604, 605 and 606

(5) In Washoe County, in census tract 001102, blocks 128A, 134, 701, 702, 703, 704, 705, 706 and 801A

(6) In Washoe County, in census tract 001103, blocks 412A, 412B, 413 and 414

(7) In Washoe County, in census tract 002101, blocks 101A, 101B, 114A, 114B, 115, 301, 302, 303, 304A, 304B, 304C, 305, 306, 307A, 307B, 308, 309, 310, 311, 312, 313, 314, 315, 316, 317, 318, 319, 320, 321, 322, 323, 324, 325, 326, 327, 328, 329, 330, 331, 332, 333, 334, 335, 336, 337A, 337B, 338, 339, 340, 341, 342 and 343

(8) In Washoe County, in census tract 002102, blocks 101, 102, 103, 104, 105, 106, 107, 108, 109, 110, 111, 112, 113A, 113B, 114, 115, 116A, 116B, 116C, 117, 118, 119, 120, 121A, 121B, 122, 123, 204, 205, 206, 207, 208, 209, 210, 213, 301, 302, 303, 304, 305, 306, 307, 308, 309, 310, 311, 312, 313, 401, 402, 403, 404, 501A, 501B, 501C, 502, 503, 504, 505, 506, 601A, 601B, 602, 603, 604, 605, 606, 607, 608, 609, 610, 611, 612, 613, 614, 615, 616, 617, 618, 701, 702, 703, 704, 705, 706, 707, 708, 709, 710, 711, 712, 713, 714, 715, 716, 717, 718, 719, 720, 801, 802, 803, 804, 805, 806, 807, 808, 809, 810, 901, 902, 903A, 903B, 904, 905, 906, 907, 908, 909, 910, 911, 912, 913, 914, 915, 916, 917, 918, 919, 920, 921, 922, 923, 924, 925 and 926

(9) In Washoe County, in census tract 002203, blocks 108, 109, 110, 111, 112, 113, 201, 202, 203, 204, 205, 301, 302, 303, 304, 305, 306, 307, 308, 309, 310, 311, 401, 402, 403, 501, 502, 503, 504, 506, 507, 508, 509, 510, 511 and 512

(10) In Washoe County, in census tract 0023, blocks 434, 435, 437, 438, 439, 440, 441 and 442

(c) County commissioner district No. 3 is composed as follows:

(1) In Washoe County, in census tracts, 0002, and 0007

(2) In Washoe County in census tract 0001, blocks 101, 102, 103, 104, 105, 106, 107, 108, 109, 110, 112, 113, 114, 115, 116, 117, 118, 120, 121, 122, 123, 124, 125, 126, 201, 202, 203, 204, 205, 206, 207, 208, 209, 210, 211, 212, 213, 214, 215, 216, 217, 218, 219, 220, 221, 222, 223, 224, 225, 226, 227, 228, 229, 230, 301, 302, 303, 304, 305, 306, 307, 308, 309, 310, 311, 312, 313, 314, 315, 316, 317, 318, 319, 320, 321, 322, 323, 324, 325, 326, 327, 328, 401, 402, 403, 404, 416, 417, 418, 419, 420, 421, 422, 423, 424, 425, 426, 427, 428, 430, 431, 432, 501, 502, 503, 504, 505, 506, 507, 508, 509, 510, 511, 512, 513, 514, 601, 602, 603, 604, 605, 606, 607, 608, 609, 610, 611, 612, 613, 614, 615, 616, 617, 618, 619, 620, 621, 622, 623, 624, 625, 626, 627, 628, 629, 630, 631, 632, 633, 634, 635, 636, 639, 640, 641, 642, 644, 645, 646, 701, 702, 703, 704, 705, 706, 707, 708, 709, 710, 711, 712, 713, 714, 715, 716, 717, 718, 719, 801, 802, 803, 804, 805, 806, 807, 808, 809, 810, 811, 812, 813, 814, 815, 816, 901, 902, 903, 904, 905, 906, 907, 908, 909, 910, 911, 912, 913, 914, 915, 916, 917, 918, 919, 920, 921 and 922

(3) In Washoe County in census tract 0003, blocks 101, 102, 103, 104, 105, 106, 107, 108, 109, 110, 111, 112, 113, 114, 115, 116, 117, 118, 119, 120, 121, 122, 123, 127, 128, 129, 130, 131, 132, 133, 201, 202, 203, 204, 212, 213, 214 and 215

(4) In Washoe County in census tract 0004, blocks 101, 102, 103, 105, 106, 107, 108, 109, 110, 111, 112, 113, 116, 117, 118, 401, 412, 415, 416 and 422

(5) In Washoe County in census tract 0009, blocks 101, 102, 103, 104, 105, 106, 107, 108, 109, 110, 120 and 121

(6) In Washoe County in census tract 0012, blocks 201A, 201B, 201C, 201D, 201E, 201F, 202, 203A, 203B, 203C, 203D, 204A, 204B, 204C, 205A, 205B, 206A, 206B, 207, 301A, 301B, 301C, 302A, 302B, 303, 304, 305, 306, 307, 308, 309, 310, 311, 312, 401A, 401B, 402, 501, 502, 503, 504, 505, 506, 507, 508, 509, 510, 511, 512, 513, 514, 515 and 516

(7) In Washoe County in census tract 0015, blocks 101A, 101B, 102, 103A, 103B, 104A, 104B, 105A, 105B, 105C, 106, 107A, 107B, 229, 301A, 301B, 301C, 301D, 301E, 302A, 302B, 302C, 306, 307A, 307B, 308, 309, 310, 311, 312, 313, 314, 315, 316, 401, 402, 403, 404, 405, 415, 417, 418, 419, 420 and 421

(8) In Washoe County in census tract 0017, blocks 101A, 102, 103, 104, 105, 106A, 106B, 107, 108, 109, 110, 111, 112, 113, 114, 115A, 115B, 116A, 116B, 117A, 117B, 117C, 118, 119, 201A, 201B, 202A, 202B, 203A, 203B, 204A, 204B, 205A, 205B, 206, 207A, 207B, 208A, 208B, 209, 210, 211, 212, 213, 214, 301A, 301B, 301C, 301D, 302A, 302B, 302C, 302D, 303A, 303B, 303C, 303D, 303E, 304A, 304B, 305, 306, 307, 308A, 308B, 309, 310, 311, 312, 313, 314, 315, 316, 317, 318, 319, 320, 321, 322, 401, 402, 403, 404, 405, 406, 407A, 407B, 407C, 408, 409, 502A, 504, 505A, 505B, 505C, 506, 507, 508, 509, 510 and 511

(9) In Washoe County in census tract 0018, blocks 101, 102, 103, 110, 111, 115, 116, 124, 125, 129, 130, 201, 202, 203, 204, 205, 206, 301, 302, 303, 304, 305,

306, 307, 308, 309, 401, 402, 403, 404, 405, 406, 407, 408, 409, 410, 411, 501, 502, 503, 504, 505, 506 and 507

(10) In Washoe County in census tract 002101, blocks 102, 103, 104, 105, 106, 107, 108, 109A, 109B, 109C, 109D, 110, 111, 112, 113, 150, 151, 201, 202, 203, 204, 205, 206, 207, 208, 209, 210, 211, 212, 213, 214, 215, 216, 217, 218, 219, 220, 221 and 222

(11) In Washoe County in census tract 002203, blocks 101, 102, 103, 104, 105, 106, 107, 114, 115, 116, 117, 118 and 505

(12) In Washoe County in census tract 0025, blocks 101A, 102, 103, 104, 105A and 106

(13) In Washoe County in census tract 002603, blocks 521A, 521B, 521D, 522A, 523, 524, 525, 526, 527, 528, 529, 530, 531, 532A, 532B, 533A, 533B, 534A, 534B, 535A, 535B, 536, 537, 538A, 538B, 539, 604B, 607, 701, 702, 703, 704A, 704C, 705A, 705B, 705C, 706, 707, 708, 709 and 710

(14) In Washoe County in census tract 002604, blocks 415, 416, 417, 418, 419, 420, 421, 501, 502, 503, 504, 505, 506, 507, 508, 509, 510, 511, 512, 513, 514, 515, 516, 517, 518, 519, 520, 521, 522, 523, 524A, 524C, 525A, 525B, 526, 527, 528, 529A, 529B, 529C, 529D, 529E, 530A, 530B, 531, 532, 533, 534A, 534B, 534C, 534D, 535A, 535B, 538, 539, 540, 541A, 542, 543, 544, 545, 546, 547, 548, 549, 550, 601A, 601B, 601C, 601D, 602A, 602B, 603A, 603B, 604A, 604B, 605A, 605B, 605C, 605D, 605E, 605F, 605G, 605H, 605J, 605K, 606A, 606B, 607, 608A, 608B, 608C, 608D, 609A, 609B, 609C, 609D, 610, 611A, 611B, 611C, 612, 613A, 613B, 614A, 614B, 614C, 615A, 615B and 616

(15) In Washoe County in census tract 002702, blocks 101A, 102, 309A, 310A, 311, 312, 401A, 401C, 403A, 403C, 403D, 404, 408 and 409

(d) County commissioner district No. 4 is composed as follows:

(1) In Washoe County, in census tracts, 0019, 0028, 002901, 002902, 0030, 003106 and 003301

(2) In Washoe County, in census tract 0001, blocks 637, 638, 643 and 647

(3) In Washoe County, in census tract 0017, blocks 101B, 120A, 120B, 501A, 501B, 501C, 502B and 503

(4) In Washoe County, in census tract 0018, blocks 412, 508 and 509

(5) In Washoe County, in census tract 002702, blocks 301A and 301B

(6) In Washoe County, in census tract 003101, blocks 201, 202, 203, 204, 205, 206, 207, 208, 209, 210, 211, 212, 213, 214, 215, 301, 302, 303, 304, 305, 306, 307, 308, 309, 310, 311, 312, 313, 314, 315, 316, 317, 318, 319, 320, 401, 402, 403, 404, 405, 406, 407, 408, 409, 410, 411, 412, 413, 414, 415, 416, 417, 418, 419, 420, 421, 422, 502A, 505A, 506, 507, 508, 509, 510, 511, 512, 513, 514, 515, 516, 517, 518, 519, 520, 521, 522, 523, 524, 525, 526, 527, 528, 529A, 529B, 530, 531, 532, 533, 534, 535, 536, 537, 538, 539, 540, 541, 542, 543, 544, 545, 546, 547, 548, 549, 550,

551, 552, 553, 554, 555, 556, 557, 558, 559, 560, 561, 562, 563, 564, 565, 566 and 567

(7) In Washoe County, in census tract 003103, blocks 107A, 107B, 108, 110, 127, 128, 131A, 131B, 132, 133, 134, 135, 136, 137, 138, 139, 140, 141, 142, 143, 144, 145, 146, 147, 148, 149 and 150

(8) In Washoe County, in census tract 003105, blocks 101A, 101B, 101C, 102A, 102B, 102C, 103, 104A, 104B, 104C, 105, 201A, 201B, 202, 203, 204, 205, 206, 301, 302, 303, 304, 305, 306, 307 and 308

(9) In Washoe County, in census tract 0034, blocks 446C, 446D, 446E, 446F, 474A, 475, 476A and 477A

(e) County commissioner district No. 5 is composed as follows:

(1) In Washoe County, in census tracts, 0014, 002601, 002701 and 9501

(2) In Washoe County, in census tract 0015, blocks 201A, 201B, 201C, 202, 203, 204, 205, 206, 207, 208, 209, 210, 211, 212, 213, 214, 215, 216, 217, 218, 219, 220, 221, 222, 223, 224, 225, 226, 227, 228, 230, 303, 304, 305, 406, 407, 408, 409, 410, 411, 412, 413, 414 and 416

(3) In Washoe County, in census tract 002102, blocks 201, 202 and 203

(4) In Washoe County, in census tract 0023, blocks 101, 102, 103, 104, 105, 106, 107, 108, 109, 110, 111, 112, 113, 114, 115, 116, 117, 118, 119, 120, 121, 122, 123, 124, 125, 126, 127, 128, 129, 201, 202, 203, 204, 205, 206, 207, 208, 209, 210, 211, 212, 213, 214, 215, 216, 217, 218, 219, 220, 221, 222, 223, 224, 225, 226, 227, 228, 229, 230, 231, 232, 233, 234, 235, 236, 237, 238, 301, 302, 303, 304, 305, 306, 307, 308, 309, 310, 311, 312, 313, 314, 315, 316, 317, 318, 319, 320, 321, 322, 401, 402A, 402B, 403, 404A, 404B, 404C, 405A, 405D, 405E, 406, 407, 408, 409, 410, 411, 412, 413, 425, 426, 427, 428, 429 and 430

(5) In Washoe County, in census tract 002401, block 101B

(6) In Washoe County, in census tract 002402, blocks 101, 102, 103, 104, 105B, 203B, 204A, 204B and 209

(7) In Washoe County, in census tract 0025, blocks 101C, 105B, 201A, 201B, 201C, 202, 203B, 210A, 210B, 216A, 216B, 217, 301, 310, 311, 312, 401, 402, 403, 404, 405, 406, 407, 408 and 409

(8) In Washoe County, in census tract 002603, blocks 101, 102, 103, 104, 105, 106, 107, 108, 109, 110, 111, 112, 113, 114, 115, 116, 117, 118, 119, 120, 121, 122, 123, 124, 125, 126, 127, 201, 202, 203, 204, 205, 206, 207, 208, 209, 210, 211, 212, 213, 214, 215, 216, 217, 218, 219, 220, 221, 222, 223, 224, 225, 226, 227, 228, 229, 230, 231, 232, 233, 234, 235, 236, 237, 238, 239, 240, 241, 242, 243, 244, 245, 246, 247, 248, 249, 301, 302, 303, 304, 305A, 305B, 306A, 306B, 307, 308, 309, 310, 311, 312, 313, 314, 315, 316, 317, 318, 319, 320, 321, 322, 323, 324A, 324B, 325, 326, 327, 328, 329, 330, 331, 332, 333, 334A, 334B, 335A, 335B, 335C, 336, 337, 338, 339, 340, 401, 402, 403, 404, 405, 406, 407, 408, 409, 410, 411, 412, 413, 414, 415, 416, 417, 418, 419, 420, 421, 422, 423, 424, 425, 426, 427, 428, 429, 430, 431, 432, 433, 434, 435, 436, 437, 438, 439A, 439B, 440, 441, 442, 443, 444, 445, 501, 502,



503, 504, 505A, 505B, 506, 507, 508, 509A, 509B, 510A, 510B, 511A, 511B, 512A, 512B, 513, 514, 515, 516A, 516B, 517, 518, 519, 520A, 520B, 521C, 522B, 533C, 540, 541, 542, 543, 544, 545, 546, 601, 602, 603, 604A, 604D, 605, 606, 609, 610, 611, 612, 613, 614, 615 and 704B

(9) In Washoe County, in census tract 002604, blocks 101, 102, 103, 104, 105, 106, 107, 108, 109, 110, 111, 112, 113, 114, 115, 116, 117, 118, 119, 120, 121, 122, 123, 124, 125, 126, 127, 128, 129, 130A, 130B, 131, 132, 133, 134, 135, 136, 137, 138, 139, 140, 141, 142, 143, 144, 145, 146, 147, 148, 149, 150, 151, 152, 153, 154, 155, 156, 157, 158, 159A, 159B, 201, 202, 203, 204, 205, 206, 207, 208, 209, 210, 211, 212, 213, 214, 215, 216, 217, 218, 219, 220, 221, 222, 223, 224, 225, 226, 227, 228, 229, 230, 231, 232, 233, 234, 235, 236, 237, 238, 239, 240, 241, 242, 301, 302, 303, 304, 305, 306, 307, 308, 309, 310, 311, 312, 313, 314, 315, 316, 317, 318, 319, 320, 321, 322, 323, 324, 325, 326, 327, 328, 329, 330, 331, 332, 333, 334, 335, 336, 337, 338, 339, 340, 341, 342, 343, 344, 345, 346, 347, 348, 401, 402, 403, 404, 405, 406, 407, 408, 409, 410, 411, 412, 413, 414, 524B, 536, 537 and 541B

(10) In Washoe County, in census tract 002702, blocks 101B, 103, 104, 105, 106, 107, 108, 109, 110, 111, 112, 113, 114, 115, 201, 202, 203, 204, 205, 206, 207, 208, 209, 210, 211, 212, 213, 214, 301C, 302, 303, 304, 305, 306, 307, 308, 309B, 310B, 401B, 402, 403B, 405, 406 and 407

(11) In Washoe County, in census tract 003101, blocks 501, 502B, 502C, 503, 504 and 505B

(12) In Washoe County, in census tract 003103, blocks 101A, 101B, 101C, 101D, 102, 103A, 103B, 103C, 103D, 104, 105A, 105B, 106, 107C, 109, 111, 112, 113, 114, 115, 116, 117, 118, 119, 120, 121, 122, 123, 124, 125, 126, 129A, 129B and 130

(13) In Washoe County, in census tract 003105, blocks 101D and 101E

(14) In Washoe County, in census tract 0034, blocks 101, 102, 103, 104, 105, 106, 107, 108, 109, 110, 111, 112, 113, 114, 115, 116, 117, 118, 119, 120, 121, 122, 123, 124, 125, 126, 127, 128, 129, 130, 131, 132, 133, 134, 135, 136, 137, 138, 139, 140, 141, 142, 143, 144, 145, 146, 147, 148, 149, 150, 151, 152, 153, 154, 155, 156, 157, 158, 159, 160, 161, 162, 163, 164, 165, 166, 167, 168, 169, 170, 171, 172, 173, 174, 175, 176, 177, 178, 179, 180, 181, 182, 183, 184, 185, 186, 187, 188, 189, 190, 191, 192, 193, 194, 195, 196, 197, 201, 202, 203, 204, 205, 206, 207, 208, 209, 210, 211, 212, 213, 214, 215, 216, 217, 218, 219, 220, 221, 222, 223, 224, 225, 226, 227, 228, 229, 230, 231, 232, 233, 234, 235, 236, 237, 238, 239, 240, 241, 242, 243, 244, 245, 246, 247, 248, 249, 250, 251, 252, 253, 254, 255, 256, 257, 258, 259, 260, 261, 262, 263, 264, 265, 266, 267, 268, 269, 270, 271, 272, 273, 274, 275, 276, 277, 278, 279, 280, 281, 282, 283, 284, 285, 286, 287, 288, 289, 290, 291, 292, 293, 294, 295, 296, 297, 301, 302, 303, 304, 305, 306, 307B, 308B, 309B, 310C, 311L, 312, 313, 314, 315, 316, 317, 318, 319, 320, 321, 322, 323, 324, 325, 326, 327, 328, 329, 330, 331, 332, 333, 334, 335, 336, 337, 401, 402, 403, 404, 405, 406, 407, 408, 409, 410, 411, 412, 413, 414, 415, 416, 417, 418, 419, 420, 421, 422, 423, 424, 425, 426, 427, 428, 429, 430, 431, 432, 433, 434, 435, 436, 437A, 437B, 438, 439, 440, 441, 442, 443, 444, 445, 446A, 446B, 446G, 447, 448, 449, 450, 451, 452, 453, 454, 455, 456, 457, 458, 459, 460, 461, 462A, 462B, 463A, 463B, 463C, 463D, 464, 465A, 465B, 465C, 465D, 465E, 466, 467, 468, 469, 470, 471, 472, 473, 474B, 476B, 477B, 478, 479, 480, 481A, 481B, 482, 483A, 483B, 483C, 484, 485, 486, 487, 488, 489, 490, 491, 492, 493, 494, 495, 496, 497, 501, 502, 503, 504, 505, 506, 507, 508, 509, 510, 511, 512, 513, 514, 515, 516, 517, 518, 519, 520, 521, 522, 523, 524, 525, 526, 527,

528, 529, 530, 531, 532, 533, 534, 535, 536, 537, 538, 539, 540, 541, 542, 543, 544,  
545, 546, 547, 548, 549, 550, 551, 552, 553, 554, 555, 556, 557, 558, 559, 560, 561,  
562, 563, 564, 565, 566, 567, 568, 569, 570, 571, 572, 573, 601, 602, 603, 604, 605,  
606, 607, 608, 609, 610, 611, 612, 613, 614, 615, 616, 617, 618, 619, 620, 621, 622,  
623, 624, 625, 626, 627, 628, 629, 630, 631, 632, 633, 634, 635, 636, 637, 638, 639,  
640, 641, 642, 643, 644, 645, 646, 647, 648, 649, 650, 651, 652, 653, 654, 655, 656,  
657, 658, 659, 660, 661, 662, 663, 664, 665, 666, 667, 668, 669, 670, 671, 672, 673,  
674, 675, 676, 677, 678, 679, 680, 681, 682, 683, 684, 685, 686, 687, 688, 689, 690,  
691, 692, 693, 694, 695, 696, 697, 701, 702, 703, 704, 705, 706, 707, 708, 709, 710,  
711, 712, 713, 714, 715, 716, 717, 718, 719, 720, 721, 722, 723, 724, 725, 726, 727,  
728, 729, 730, 731, 732, 733, 734, 735, 736, 737, 738, 739, 740, 741, 742, 743, 744,  
745, 746, 747, 748, 749, 750, 751, 752, 753, 754, 755, 756, 757, 758, 759, 760, 761,  
762, 763, 764, 765, 766, 767, 768, 769, 770, 771, 772, 773, 774, 775, 776, 777, 778,  
779, 780, 781, 782, 783, 784, 785, 786, 787, 788, 789, 790, 791, 792, 793, 794, 795,  
796 and 797

7. The members of the board of county commissioners of Washoe County as constituted on December 31, 1991, shall, pursuant to law, continue to hold office for the terms for which they were elected or appointed and as of January 1, 1992, shall represent the following county commissioner districts as such districts are established in accordance with subsection 6 above:

(a) Commissioner Rene Reid shall be the commissioner representing county commissioner district No. 1.

(b) Commissioner Dianne L. Cornwall shall be the commissioner representing county commissioner district No. 2.

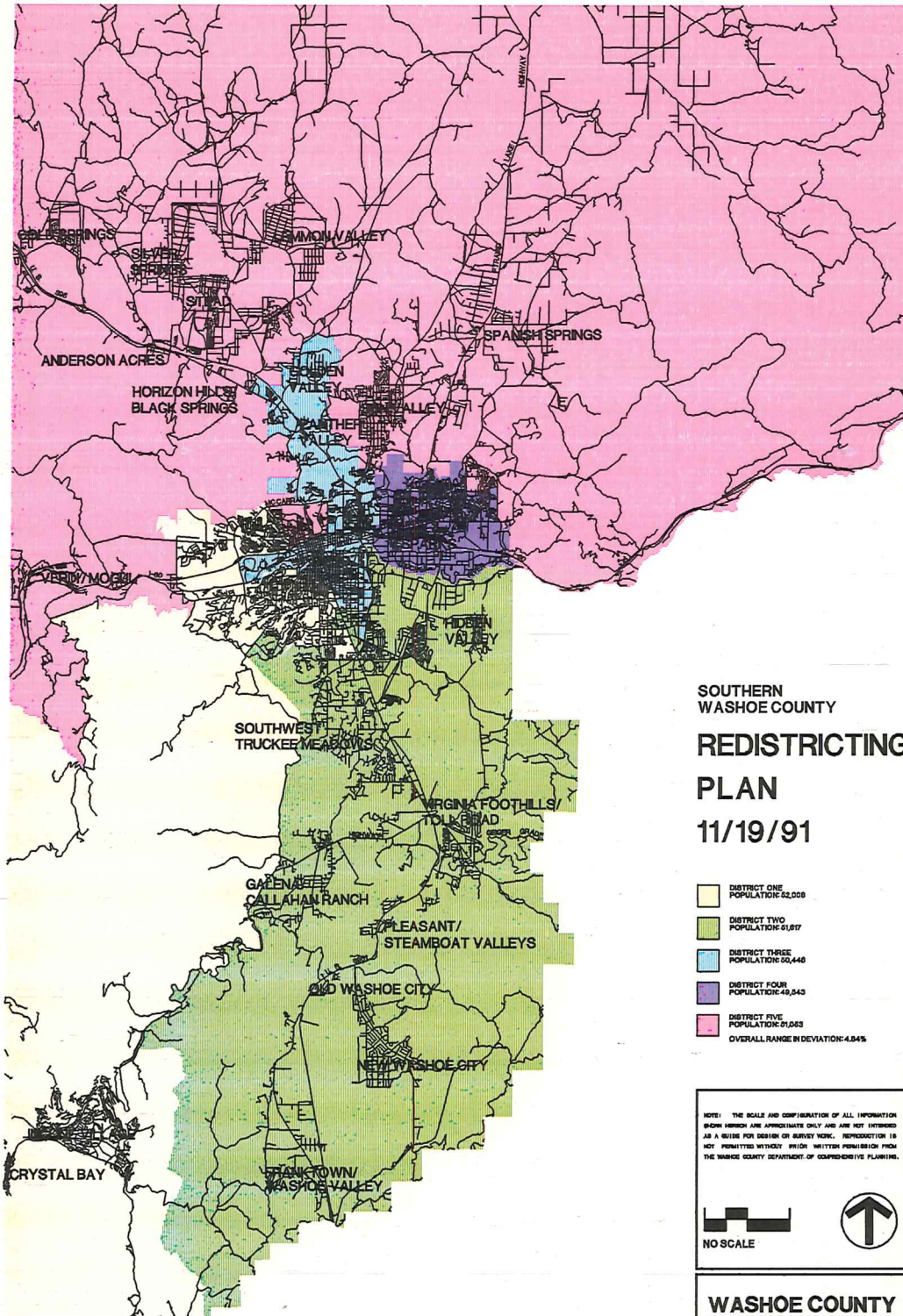
(c) Commissioner Gene McDowell shall be the commissioner representing county commissioner district No. 3.

(d) Commissioner Tina Leighton shall be the commissioner representing county commissioner district No. 4.

(e) Commissioner Larry W. Beck shall be the commissioner representing county commissioner district No. 5.

8. If a vacancy occurs in the office of any county commissioner before the expiration of the term of that county commissioner, the vacancy shall be filled according to law by appointment of a qualified elector from the county commissioner district which that county commissioner represented in accordance with either subsection 1 or subsection 6 as of the date the appointment is made.

9. A map showing the new county commissioner districts which take effect January 1, 1992, as set forth in subsection 6 above, is set forth below. The map is intended to illustrate the new districts. In the event of a conflict between the map and the descriptions of the new districts as contained in subsection 6, the descriptions contained in subsection 6 shall control.



**SOUTHERN  
WASHOE COUNTY  
REDISTRICTING  
PLAN  
11/19/91**

- DISTRICT ONE  
POPULATION: 62,008
  - DISTRICT TWO  
POPULATION: 61,077
  - DISTRICT THREE  
POPULATION: 50,448
  - DISTRICT FOUR  
POPULATION: 48,843
  - DISTRICT FIVE  
POPULATION: 91,083
- OVERALL RANGE IN DEVIATION: 4.84%

NOTE: THE SCALE AND CONFIGURATION OF ALL INFORMATION SHOWN HEREON ARE APPROXIMATE ONLY AND ARE NOT EXTENDED AS A BASIS FOR DESIGN OR SURVEY WORK. REPRODUCTION IS NOT PERMITTED WITHOUT WRITTEN PERMISSION FROM THE WASHOE COUNTY DEPARTMENT OF COMPREHENSIVE PLANNING.



**WASHOE COUNTY  
DEPARTMENT OF  
COMPREHENSIVE  
PLANNING**



POST OFFICE BOX 1150  
RENO, NEVADA 89520  
702/328-0900

SOURCE: WASHOE COUNTY DEPARTMENT OF COMPREHENSIVE PLANNING

DATE: NOVEMBER 1991

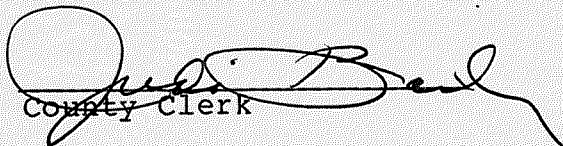
Proposed on the 19<sup>th</sup> day of November, 1991.  
Proposed by Commissioners Cornwall.  
Passed on the 10<sup>th</sup> day of December, 1991.

Vote:

Ayes: Commissioners: Cornwall, Leighton, McDowell  
Nays: Commissioners: Reid, Beck  
Absent: Commissioners: None

  
Chairman of the Board

ATTEST:

  
County Clerk

This ordinance shall be in force and effect from and after  
the 23<sup>rd</sup> day of December, 1991.