

Washoe County Sheriff's Office

CAB Data

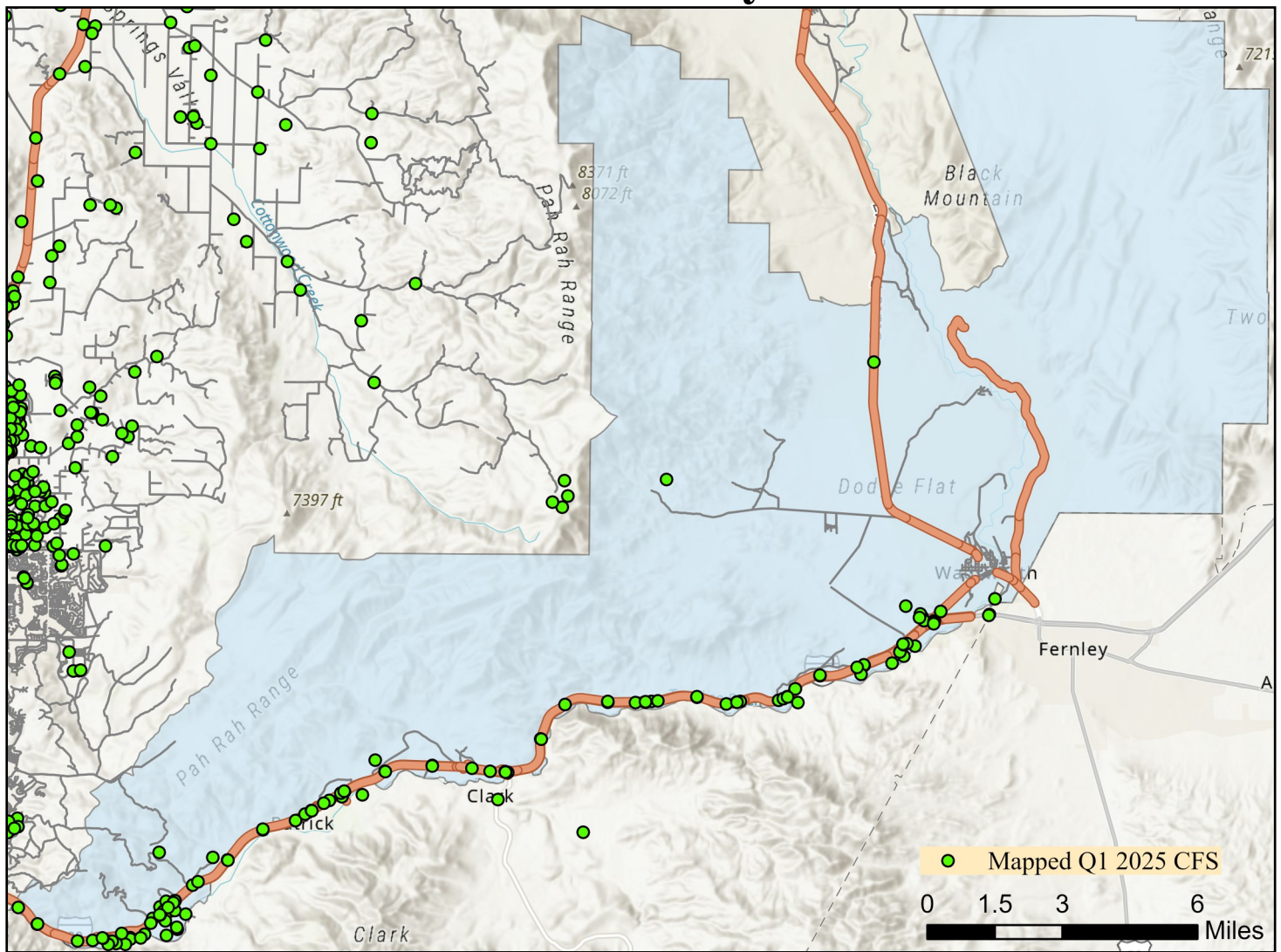
Quarter 1 2025



Note: Calls for service (CFS) and case data reflect WCSO jurisdictions. CFS and cases are mapped with useable coordinates only.

Published: 4/9/2025

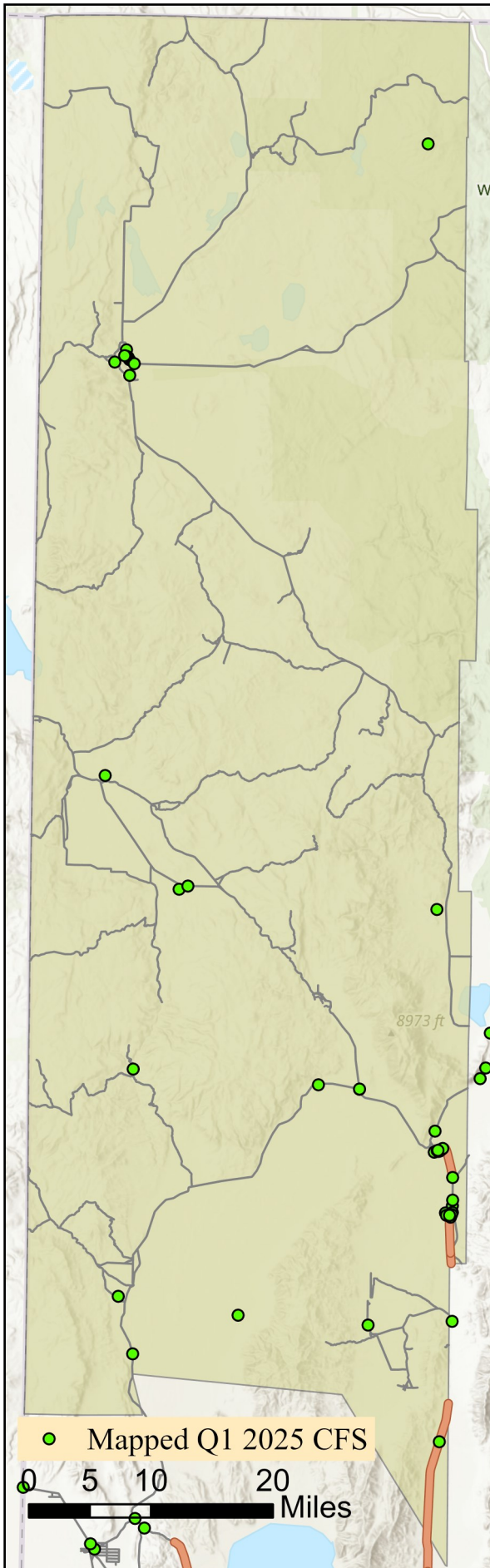
East Truckee Canyon CAB



| Offense Categories | Q1 | 3yr Avg | Up/Down | Offense Categories | Q1 | 3yr Avg | Up/Down |
|------------------------------|----|---------|---------|------------------------------|-----------|----------------|----------------|
| All Other Offenses | 3 | 1 | ↑ | Homicide Offenses | 0 | 0 | ● |
| Animal Cruelty | 0 | 0 | ● | Human Trafficking Offenses | 0 | 0 | ● |
| Arson | 0 | 1 | ↓ | Kidnapping/Abduction | 0 | 0 | ● |
| Assault Offenses | 1 | 2 | ↓ | Larceny/Theft Offenses | 2 | 2 | ● |
| Bad Checks | 0 | 0 | ● | Liquor Law Violations | 0 | 0 | ● |
| Bribery | 0 | 0 | ● | Motor Vehicle Theft | 1 | 0 | ↑ |
| Burglary | 1 | 2 | ↓ | Peeping Tom | 0 | 0 | ● |
| Counterfeiting/Forgery | 0 | 0 | ● | Pornography/Obscene Material | 0 | 0 | ● |
| Curfew/Loitering/Vagrancy | 0 | 0 | ● | Prostitution Offenses | 0 | 0 | ● |
| Destruction/Damage/Vandalism | 1 | 1 | ● | Robbery | 0 | 0 | ● |
| Disorderly Conduct | 0 | 0 | ● | Sex Offenses | 0 | 2 | ↓ |
| Driving Under the Influence | 0 | 1 | ↓ | Sex Offenses, Nonforcible | 0 | 0 | ● |
| Drug Equipment Violations | 0 | 1 | ↓ | Stolen Property Offenses | 0 | 0 | ● |
| Drug/Narcotic Violations | 0 | 4 | ↓ | Trespass of Real Property | 0 | 1 | ↓ |
| Drunkenness | 0 | 0 | ● | Weapon Law Violations | 0 | 0 | ● |
| Embezzlement | 0 | 0 | ● | CFS Status | Q1 | 3yr Avg | Up/Down |
| Extortion/Blackmail | 0 | 1 | ↓ | Dispatched | 44 | 50 | ↓ |
| Family Offenses (Nonviolent) | 1 | 1 | ● | Initiated | 120 | 321 | ↓ |
| Fraud Offenses | 0 | 2 | ↓ | Unspecified | 232 | 165 | ↑ |
| Gambling Offenses | 0 | 0 | ● | Total | 396 | 536 | ↓ |

Note: Initiated CFS are defined by whether the created date and time listed in the CFS match the on scene date and time entered by dispatch. Additionally, follow up and assignment CFS types are included in this category. Dispatched CFS are defined by whether an on scene time is listed in the CFS, and the CFS is not initially defined as initiated. Unspecified CFS include CFS with no on scene date and time information.

Gerlach/Empire CAB

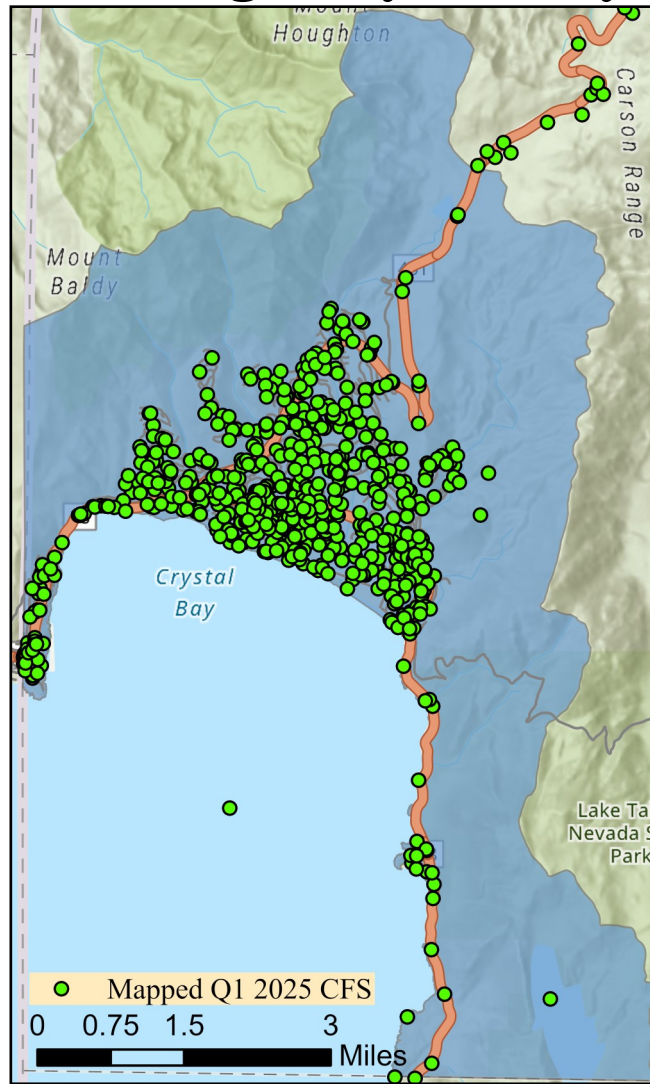


| Offense Categories | Q1 | 3yr Avg | Up/Down |
|------------------------------|----|---------|---------|
| All Other Offenses | 1 | 2 | ↓ |
| Animal Cruelty | 0 | 0 | ● |
| Arson | 0 | 0 | ● |
| Assault Offenses | 2 | 1 | ↑ |
| Bad Checks | 0 | 0 | ● |
| Bribery | 0 | 0 | ● |
| Burglary | 2 | 2 | ● |
| Counterfeiting/Forgery | 0 | 0 | ● |
| Curfew/Loitering/Vagrancy | 0 | 0 | ● |
| Destruction/Damage/Vandalism | 1 | 2 | ↓ |
| Disorderly Conduct | 0 | 0 | ● |
| Driving Under the Influence | 0 | 0 | ● |
| Drug Equipment Violations | 1 | 0 | ↑ |
| Drug/Narcotic Violations | 1 | 0 | ↑ |
| Drunkenness | 0 | 0 | ● |
| Embezzlement | 0 | 0 | ● |
| Extortion/Blackmail | 0 | 0 | ● |
| Family Offenses (Nonviolent) | 0 | 0 | ● |
| Fraud Offenses | 0 | 0 | ● |
| Gambling Offenses | 0 | 0 | ● |

| Offense Categories | Q1 | 3yr Avg | Up/Down |
|------------------------------|----|---------|---------|
| Homicide Offenses | 0 | 0 | ● |
| Human Trafficking Offenses | 0 | 0 | ● |
| Kidnapping/Abduction | 0 | 0 | ● |
| Larceny/Theft Offenses | 2 | 0 | ↑ |
| Liquor Law Violations | 0 | 0 | ● |
| Motor Vehicle Theft | 0 | 1 | ↓ |
| Peeping Tom | 0 | 0 | ● |
| Pornography/Obscene Material | 0 | 0 | ● |
| Prostitution Offenses | 0 | 0 | ● |
| Robbery | 0 | 0 | ● |
| Sex Offenses | 0 | 0 | ● |
| Sex Offenses, Nonforcible | 0 | 0 | ● |
| Stolen Property Offenses | 1 | 0 | ↑ |
| Trespass of Real Property | 0 | 1 | ↓ |
| Weapon Law Violations | 1 | 0 | ↑ |
| CFS Status | Q1 | 3yr Avg | Up/Down |
| Dispatched | 23 | 13 | ↑ |
| Initiated | 39 | 198 | ↓ |
| Unspecified | 21 | 16 | ↑ |
| Total | 83 | 228 | ↓ |

Note: Initiated CFS are defined by whether the created date and time listed in the CFS match the on scene date and time entered by dispatch. Additionally, follow up and assignment CFS types are included in this category. Dispatched CFS are defined by whether an on scene time is listed in the CFS, and the CFS is not initially defined as initiated. Unspecified CFS include CFS with no on scene date and time information.

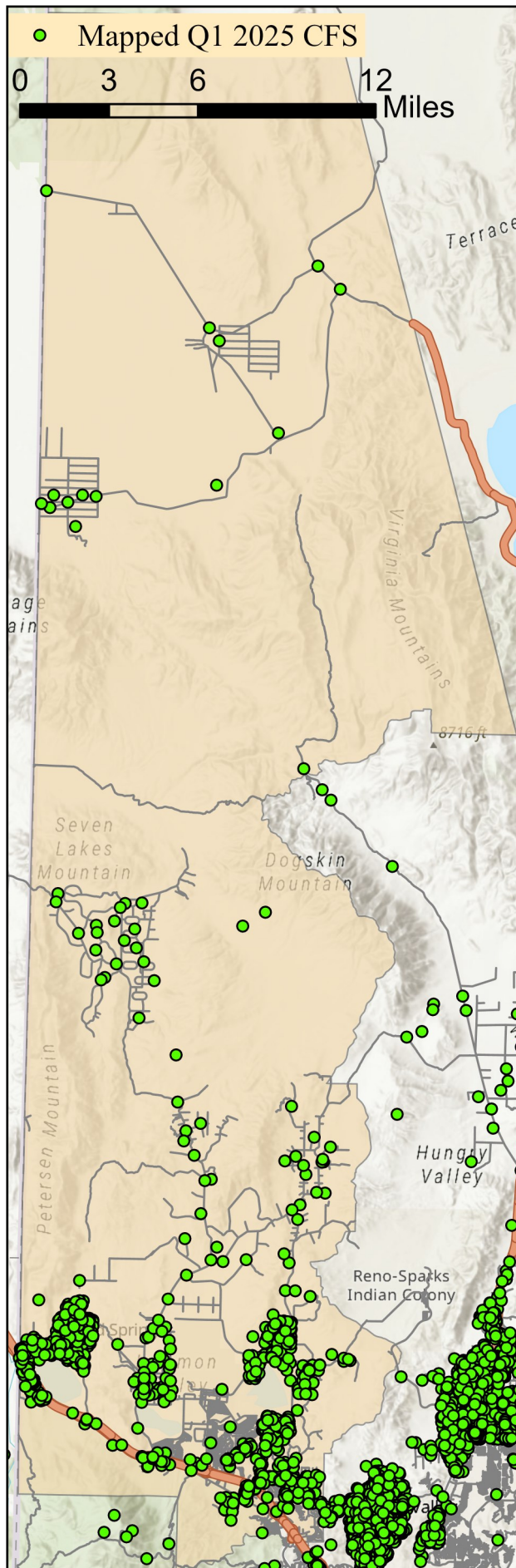
Incline Village/Crystal Bay CAB



| Offense Categories | Q1 | 3yr Avg | Up/Down | Offense Categories | Q1 | 3yr Avg | Up/Down |
|------------------------------|----|---------|---------|------------------------------|-----------|----------------|----------------|
| All Other Offenses | 19 | 11 | ↑ | Homicide Offenses | 1 | 0 | ↑ |
| Animal Cruelty | 0 | 1 | ↓ | Human Trafficking Offenses | 0 | 2 | ↓ |
| Arson | 0 | 1 | ↓ | Kidnapping/Abduction | 1 | 1 | ○ |
| Assault Offenses | 16 | 10 | ↑ | Larceny/Theft Offenses | 5 | 9 | ↓ |
| Bad Checks | 0 | 0 | ○ | Liquor Law Violations | 2 | 1 | ↑ |
| Bribery | 0 | 0 | ○ | Motor Vehicle Theft | 2 | 2 | ○ |
| Burglary | 0 | 1 | ↓ | Peeping Tom | 0 | 0 | ○ |
| Counterfeiting/Forgery | 1 | 1 | ○ | Pornography/Obscene Material | 0 | 2 | ↓ |
| Curfew/Loitering/Vagrancy | 0 | 0 | ○ | Prostitution Offenses | 0 | 0 | ○ |
| Destruction/Damage/Vandalism | 8 | 5 | ↑ | Robbery | 1 | 2 | ↓ |
| Disorderly Conduct | 0 | 1 | ↓ | Sex Offenses | 0 | 3 | ↓ |
| Driving Under the Influence | 31 | 4 | ↑ | Sex Offenses, Nonforcible | 0 | 1 | ↓ |
| Drug Equipment Violations | 5 | 3 | ↑ | Stolen Property Offenses | 1 | 1 | ○ |
| Drug/Narcotic Violations | 4 | 4 | ○ | Trespass of Real Property | 1 | 3 | ↓ |
| Drunkenness | 0 | 0 | ○ | Weapon Law Violations | 2 | 1 | ↑ |
| Embezzlement | 0 | 2 | ↓ | CFS Status | Q1 | 3yr Avg | Up/Down |
| Extortion/Blackmail | 1 | 0 | ↑ | Dispatched | 436 | 538 | ↓ |
| Family Offenses (Nonviolent) | 2 | 1 | ↑ | Initiated | 2,485 | 1,472 | ↑ |
| Fraud Offenses | 10 | 8 | ↑ | Unspecified | 528 | 712 | ↓ |
| Gambling Offenses | 0 | 0 | ○ | Total | 3,449 | 2,722 | ↑ |

Note: Initiated CFS are defined by whether the created date and time listed in the CFS match the on scene date and time entered by dispatch. Additionally, follow up and assignment CFS types are included in this category. Dispatched CFS are defined by whether an on scene time is listed in the CFS, and the CFS is not initially defined as initiated. Unspecified CFS include CFS with no on scene date and time information.

North Valleys CAB

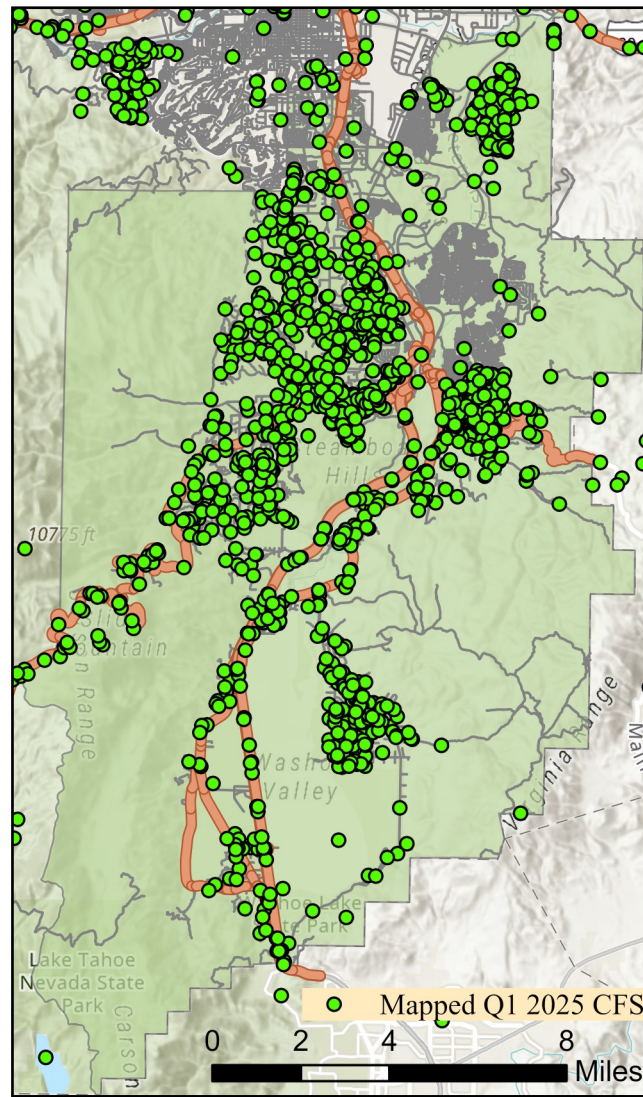


| Offense Categories | Q1 | 3yr Avg | Up/Down |
|------------------------------|----|---------|---------|
| All Other Offenses | 26 | 51 | ↓ |
| Animal Cruelty | 0 | 1 | ↓ |
| Arson | 0 | 0 | ● |
| Assault Offenses | 29 | 33 | ↓ |
| Bad Checks | 0 | 0 | ● |
| Bribery | 0 | 0 | ● |
| Burglary | 8 | 12 | ↓ |
| Counterfeiting/Forgery | 1 | 4 | ↓ |
| Curfew/Loitering/Vagrancy | 0 | 1 | ↓ |
| Destruction/Damage/Vandalism | 19 | 22 | ↓ |
| Disorderly Conduct | 4 | 3 | ↑ |
| Driving Under the Influence | 12 | 12 | ● |
| Drug Equipment Violations | 15 | 10 | ↑ |
| Drug/Narcotic Violations | 16 | 11 | ↑ |
| Drunkenness | 0 | 0 | ● |
| Embezzlement | 0 | 2 | ↓ |
| Extortion/Blackmail | 3 | 2 | ↑ |
| Family Offenses (Nonviolent) | 5 | 5 | ● |
| Fraud Offenses | 28 | 23 | ↑ |
| Gambling Offenses | 0 | 0 | ● |

| Offense Categories | Q1 | 3yr Avg | Up/Down |
|------------------------------|-------|---------|---------|
| Homicide Offenses | 1 | 0 | ↑ |
| Human Trafficking Offenses | 1 | 0 | ↑ |
| Kidnapping/Abduction | 1 | 1 | ● |
| Larceny/Theft Offenses | 24 | 24 | ● |
| Liquor Law Violations | 1 | 1 | ● |
| Motor Vehicle Theft | 6 | 6 | ● |
| Peeping Tom | 0 | 0 | ● |
| Pornography/Obscene Material | 0 | 1 | ↓ |
| Prostitution Offenses | 0 | 0 | ● |
| Robbery | 0 | 2 | ↓ |
| Sex Offenses | 6 | 6 | ● |
| Sex Offenses, Nonforcible | 0 | 2 | ↓ |
| Stolen Property Offenses | 2 | 4 | ↓ |
| Trespass of Real Property | 4 | 5 | ↓ |
| Weapon Law Violations | 5 | 4 | ↑ |
| CFS Status | Q1 | 3yr Avg | Up/Down |
| Dispatched | 624 | 640 | ↓ |
| Initiated | 1,338 | 764 | ↑ |
| Unspecified | 808 | 657 | ↑ |
| Total | 2,770 | 2,061 | ↑ |

Note: Initiated CFS are defined by whether the created date and time listed in the CFS match the on scene date and time entered by dispatch. Additionally, follow up and assignment CFS types are included in this category. Dispatched CFS are defined by whether an on scene time is listed in the CFS, and the CFS is not initially defined as initiated. Unspecified CFS include CFS with no on scene date and time information.

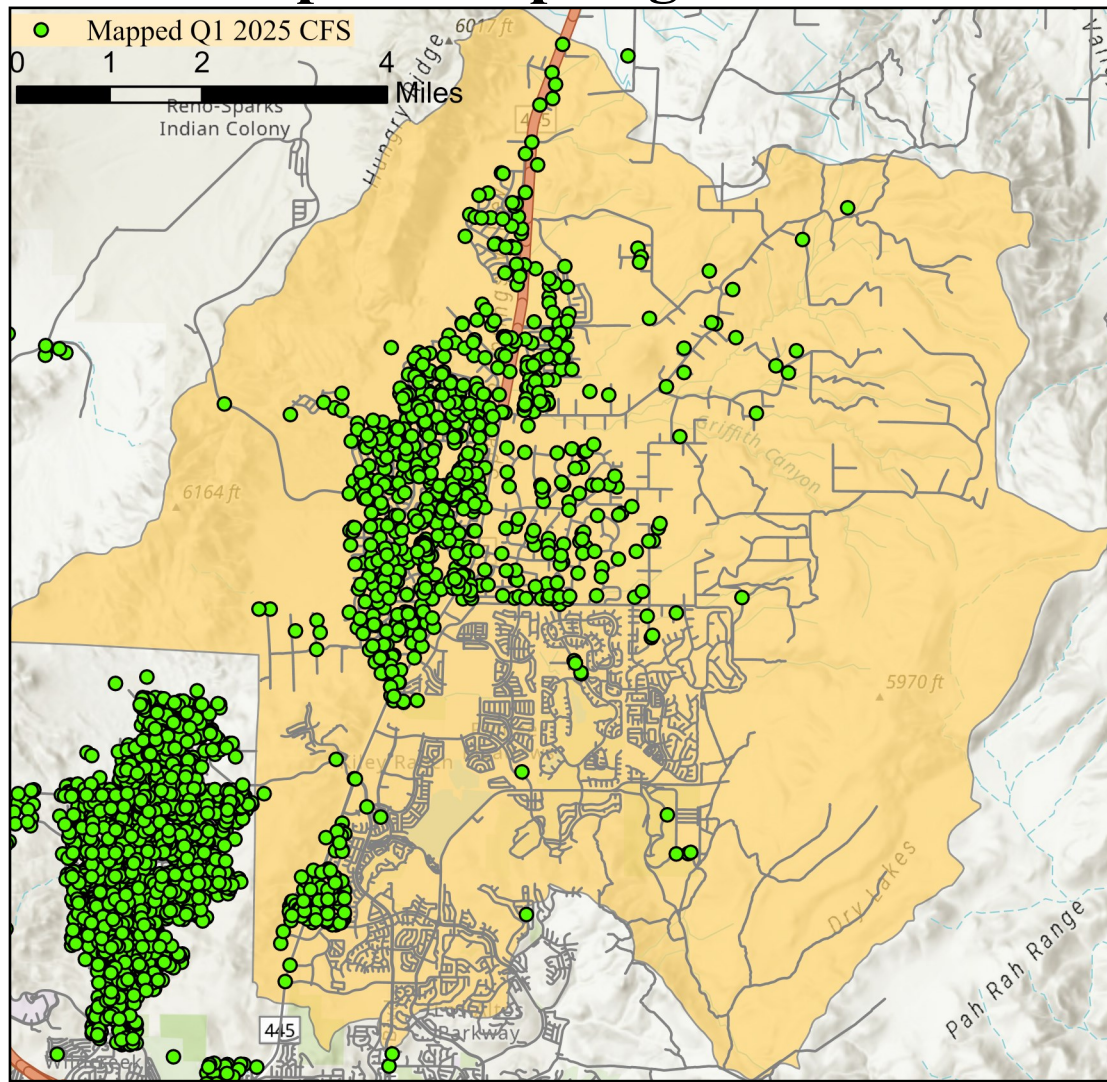
South Truckee Meadows/Washoe Valley CAB



| Offense Categories | Q1 | 3yr Avg | Up/Down | Offense Categories | Q1 | 3yr Avg | Up/Down |
|------------------------------|----|---------|---------|------------------------------|-----------|----------------|----------------|
| All Other Offenses | 22 | 31 | ↓ | Homicide Offenses | 0 | 1 | ↓ |
| Animal Cruelty | 0 | 0 | ○ | Human Trafficking Offenses | 0 | 0 | ○ |
| Arson | 0 | 1 | ↓ | Kidnapping/Abduction | 2 | 2 | ○ |
| Assault Offenses | 22 | 21 | ↑ | Larceny/Theft Offenses | 26 | 25 | ↑ |
| Bad Checks | 0 | 1 | ↓ | Liquor Law Violations | 1 | 2 | ↓ |
| Bribery | 0 | 0 | ○ | Motor Vehicle Theft | 2 | 2 | ○ |
| Burglary | 5 | 7 | ↓ | Peeping Tom | 0 | 0 | ○ |
| Counterfeiting/Forgery | 5 | 5 | ○ | Pornography/Obscene Material | 0 | 1 | ↓ |
| Curfew/Loitering/Vagrancy | 0 | 0 | ○ | Prostitution Offenses | 4 | 0 | ↑ |
| Destruction/Damage/Vandalism | 18 | 13 | ↑ | Robbery | 0 | 0 | ○ |
| Disorderly Conduct | 1 | 2 | ↓ | Sex Offenses | 5 | 4 | ↑ |
| Driving Under the Influence | 13 | 8 | ↑ | Sex Offenses, Nonforcible | 0 | 0 | ○ |
| Drug Equipment Violations | 4 | 5 | ↓ | Stolen Property Offenses | 0 | 6 | ↓ |
| Drug/Narcotic Violations | 4 | 6 | ↓ | Trespass of Real Property | 2 | 3 | ↓ |
| Drunkenness | 0 | 0 | ○ | Weapon Law Violations | 0 | 2 | ↓ |
| Embezzlement | 0 | 3 | ↓ | CFS Status | Q1 | 3yr Avg | Up/Down |
| Extortion/Blackmail | 1 | 1 | ○ | Dispatched | 597 | 587 | ↑ |
| Family Offenses (Nonviolent) | 2 | 3 | ↓ | Initiated | 1,277 | 880 | ↑ |
| Fraud Offenses | 48 | 45 | ↑ | Unspecified | 1,213 | 1,013 | ↑ |
| Gambling Offenses | 0 | 0 | ○ | Total | 3,087 | 2,480 | ↑ |

Note: Initiated CFS are defined by whether the created date and time listed in the CFS match the on scene date and time entered by dispatch. Additionally, follow up and assignment CFS types are included in this category. Dispatched CFS are defined by whether an on scene time is listed in the CFS, and the CFS is not initially defined as initiated. Unspecified CFS include CFS with no on scene date and time information.

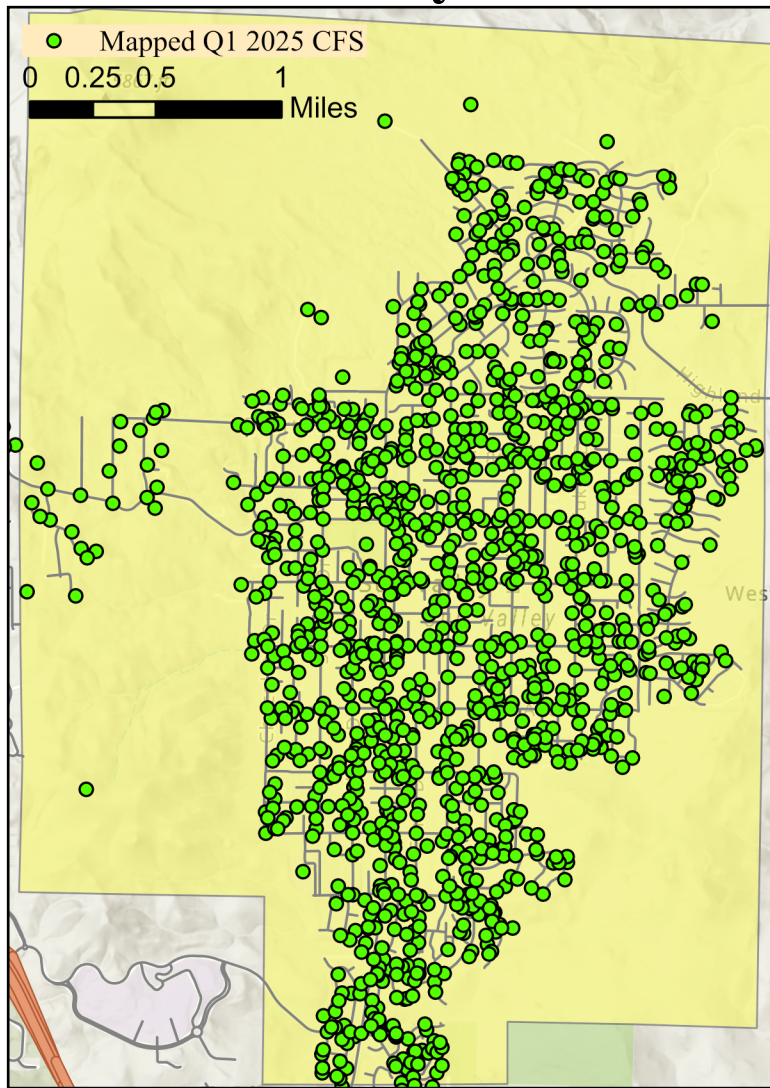
Spanish Springs CAB



| Offense Categories | Q1 | 3yr Avg | Up/Down | Offense Categories | Q1 | 3yr Avg | Up/Down |
|------------------------------|----|---------|---------|------------------------------|-----------|----------------|----------------|
| All Other Offenses | 12 | 10 | ↑ | Homicide Offenses | 0 | 0 | ● |
| Animal Cruelty | 0 | 0 | ● | Human Trafficking Offenses | 0 | 0 | ● |
| Arson | 0 | 0 | ● | Kidnapping/Abduction | 1 | 2 | ↓ |
| Assault Offenses | 12 | 19 | ↓ | Larceny/Theft Offenses | 9 | 16 | ↓ |
| Bad Checks | 0 | 0 | ● | Liquor Law Violations | 3 | 3 | ● |
| Bribery | 0 | 0 | ● | Motor Vehicle Theft | 4 | 3 | ↑ |
| Burglary | 2 | 5 | ↓ | Peeping Tom | 0 | 0 | ● |
| Counterfeiting/Forgery | 0 | 3 | ↓ | Pornography/Obscene Material | 3 | 1 | ↑ |
| Curfew/Loitering/Vagrancy | 0 | 2 | ↓ | Prostitution Offenses | 0 | 0 | ● |
| Destruction/Damage/Vandalism | 28 | 20 | ↑ | Robbery | 1 | 0 | ↑ |
| Disorderly Conduct | 3 | 2 | ↑ | Sex Offenses | 4 | 3 | ↑ |
| Driving Under the Influence | 8 | 5 | ↑ | Sex Offenses, Nonforcible | 0 | 0 | ● |
| Drug Equipment Violations | 1 | 1 | ● | Stolen Property Offenses | 0 | 2 | ↓ |
| Drug/Narcotic Violations | 0 | 2 | ↓ | Trespass of Real Property | 1 | 1 | ● |
| Drunkenness | 0 | 0 | ● | Weapon Law Violations | 2 | 3 | ↓ |
| Embezzlement | 1 | 1 | ● | CFS Status | Q1 | 3yr Avg | Up/Down |
| Extortion/Blackmail | 2 | 2 | ● | Dispatched | 417 | 372 | ↑ |
| Family Offenses (Nonviolent) | 3 | 4 | ↓ | Initiated | 840 | 434 | ↑ |
| Fraud Offenses | 15 | 16 | ↓ | Unspecified | 714 | 546 | ↑ |
| Gambling Offenses | 0 | 0 | ● | Total | 1,971 | 1,352 | ↑ |

Note: Initiated CFS are defined by whether the created date and time listed in the CFS match the on scene date and time entered by dispatch. Additionally, follow up and assignment CFS types are included in this category. Dispatched CFS are defined by whether an on scene time is listed in the CFS, and the CFS is not initially defined as initiated. Unspecified CFS include CFS with no on scene date and time information.

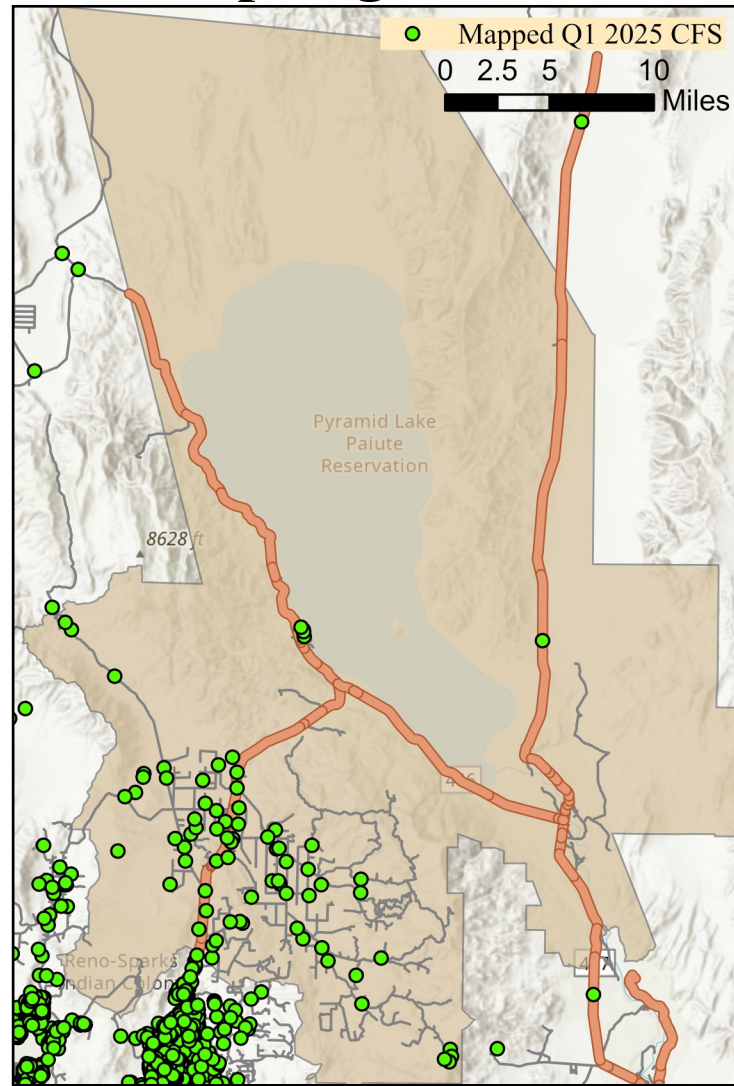
Sun Valley CAB



| Offense Categories | Q1 | 3yr Avg | Up/Down | Offense Categories | Q1 | 3yr Avg | Up/Down |
|------------------------------|----|---------|---------|------------------------------|-----------|----------------|----------------|
| All Other Offenses | 96 | 93 | ↑ | Homicide Offenses | 0 | 1 | ↓ |
| Animal Cruelty | 0 | 0 | ● | Human Trafficking Offenses | 0 | 1 | ↓ |
| Arson | 1 | 1 | ● | Kidnapping/Abduction | 4 | 3 | ↑ |
| Assault Offenses | 78 | 50 | ↑ | Larceny/Theft Offenses | 37 | 24 | ↑ |
| Bad Checks | 0 | 0 | ● | Liquor Law Violations | 3 | 3 | ● |
| Bribery | 0 | 0 | ● | Motor Vehicle Theft | 9 | 8 | ↑ |
| Burglary | 11 | 10 | ↑ | Peeping Tom | 0 | 0 | ● |
| Counterfeiting/Forgery | 2 | 3 | ↓ | Pornography/Obscene Material | 2 | 2 | ● |
| Curfew/Loitering/Vagrancy | 0 | 1 | ↓ | Prostitution Offenses | 0 | 0 | ● |
| Destruction/Damage/Vandalism | 31 | 27 | ↑ | Robbery | 0 | 2 | ↓ |
| Disorderly Conduct | 2 | 2 | ● | Sex Offenses | 14 | 10 | ↑ |
| Driving Under the Influence | 18 | 11 | ↑ | Sex Offenses, Nonforcible | 0 | 0 | ● |
| Drug Equipment Violations | 25 | 23 | ↑ | Stolen Property Offenses | 8 | 6 | ↑ |
| Drug/Narcotic Violations | 32 | 28 | ↑ | Trespass of Real Property | 6 | 5 | ↑ |
| Drunkenness | 0 | 1 | ↓ | Weapon Law Violations | 12 | 11 | ↑ |
| Embezzlement | 1 | 1 | ● | CFS Status | Q1 | 3yr Avg | Up/Down |
| Extortion/Blackmail | 3 | 2 | ↑ | Dispatched | 917 | 891 | ↑ |
| Family Offenses (Nonviolent) | 4 | 11 | ↓ | Initiated | 1,870 | 1,448 | ↑ |
| Fraud Offenses | 25 | 27 | ↓ | Unspecified | 946 | 726 | ↑ |
| Gambling Offenses | 0 | 0 | ● | Total | 3,733 | 3,065 | ↑ |

Note: Initiated CFS are defined by whether the created date and time listed in the CFS match the on scene date and time entered by dispatch. Additionally, follow up and assignment CFS types are included in this category. Dispatched CFS are defined by whether an on scene time is listed in the CFS, and the CFS is not initially defined as initiated. Unspecified CFS include CFS with no on scene date and time information.

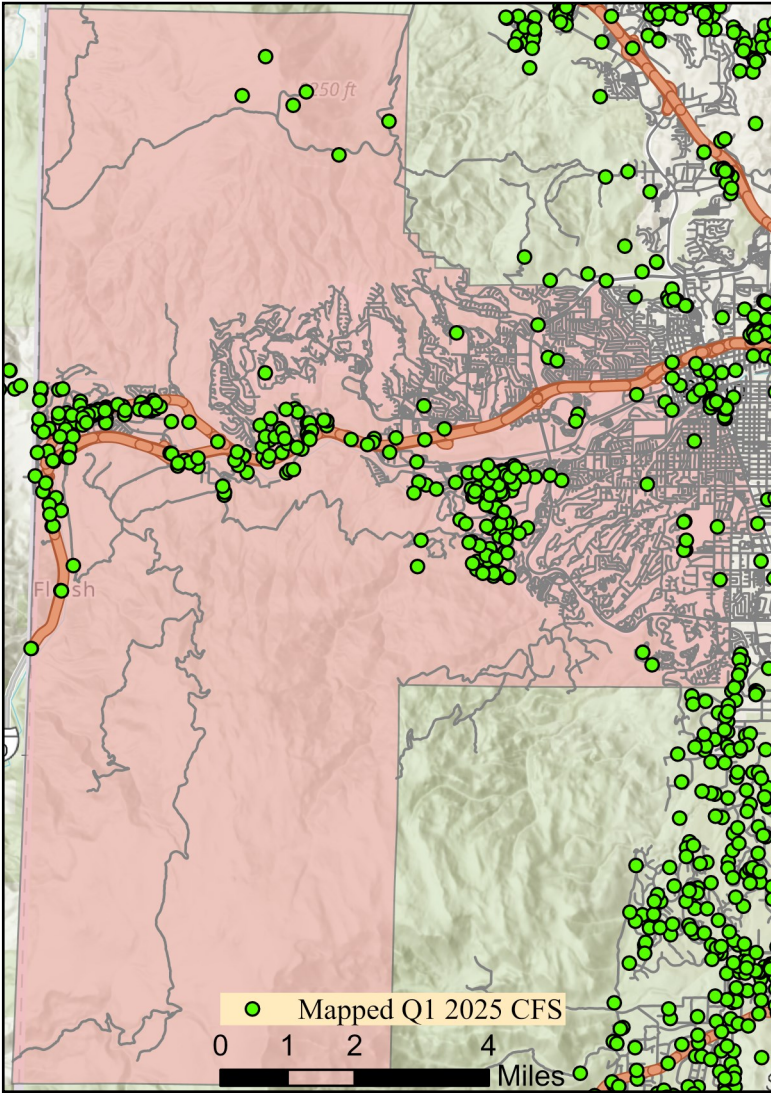
Warm Springs/Rural CAB



| Offense Categories | Q1 | 3yr Avg | Up/Down | Offense Categories | Q1 | 3yr Avg | Up/Down |
|------------------------------|----|---------|---------|------------------------------|-----------|----------------|----------------|
| All Other Offenses | 1 | 3 | ↓ | Homicide Offenses | 0 | 0 | ● |
| Animal Cruelty | 0 | 0 | ● | Human Trafficking Offenses | 0 | 0 | ● |
| Arson | 0 | 0 | ● | Kidnapping/Abduction | 0 | 0 | ● |
| Assault Offenses | 2 | 2 | ● | Larceny/Theft Offenses | 0 | 2 | ↓ |
| Bad Checks | 0 | 0 | ● | Liquor Law Violations | 0 | 2 | ↓ |
| Bribery | 0 | 0 | ● | Motor Vehicle Theft | 0 | 2 | ↓ |
| Burglary | 0 | 1 | ↓ | Peeping Tom | 0 | 0 | ● |
| Counterfeiting/Forgery | 0 | 1 | ↓ | Pornography/Obscene Material | 0 | 0 | ● |
| Curfew/Loitering/Vagrancy | 0 | 0 | ● | Prostitution Offenses | 0 | 0 | ● |
| Destruction/Damage/Vandalism | 0 | 2 | ↓ | Robbery | 0 | 0 | ● |
| Disorderly Conduct | 0 | 0 | ● | Sex Offenses | 1 | 0 | ↑ |
| Driving Under the Influence | 0 | 2 | ↓ | Sex Offenses, Nonforcible | 0 | 0 | ● |
| Drug Equipment Violations | 0 | 0 | ● | Stolen Property Offenses | 0 | 1 | ↓ |
| Drug/Narcotic Violations | 0 | 2 | ↓ | Trespass of Real Property | 0 | 0 | ● |
| Drunkenness | 0 | 0 | ● | Weapon Law Violations | 1 | 0 | ↑ |
| Embezzlement | 0 | 0 | ● | CFS Status | Q1 | 3yr Avg | Up/Down |
| Extortion/Blackmail | 0 | 0 | ● | Dispatched | 33 | 45 | ↓ |
| Family Offenses (Nonviolent) | 0 | 1 | ↓ | Initiated | 88 | 60 | ↑ |
| Fraud Offenses | 1 | 2 | ↓ | Unspecified | 75 | 76 | ↓ |
| Gambling Offenses | 0 | 0 | ● | Total | 196 | 181 | ↑ |

Note: Initiated CFS are defined by whether the created date and time listed in the CFS match the on scene date and time entered by dispatch. Additionally, follow up and assignment CFS types are included in this category. Dispatched CFS are defined by whether an on scene time is listed in the CFS, and the CFS is not initially defined as initiated. Unspecified CFS include CFS with no on scene date and time information.

West Truckee Meadows/Verdi CAB



| Offense Categories | Q1 | 3yr Avg | Up/Down | Offense Categories | Q1 | 3yr Avg | Up/Down |
|------------------------------|----|---------|---------|------------------------------|-----|---------|---------|
| All Other Offenses | 10 | 11 | ↓ | Homicide Offenses | 0 | 0 | ● |
| Animal Cruelty | 0 | 1 | ↓ | Human Trafficking Offenses | 0 | 0 | ● |
| Arson | 0 | 0 | ● | Kidnapping/Abduction | 0 | 0 | ● |
| Assault Offenses | 4 | 5 | ↓ | Larceny/Theft Offenses | 16 | 9 | ↑ |
| Bad Checks | 0 | 0 | ● | Liquor Law Violations | 0 | 0 | ● |
| Bribery | 0 | 0 | ● | Motor Vehicle Theft | 1 | 3 | ↓ |
| Burglary | 1 | 4 | ↓ | Peeping Tom | 0 | 0 | ● |
| Counterfeiting/Forgery | 1 | 0 | ↑ | Pornography/Obscene Material | 1 | 1 | ● |
| Curfew/Loitering/Vagrancy | 0 | 0 | ● | Prostitution Offenses | 3 | 0 | ↑ |
| Destruction/Damage/Vandalism | 5 | 7 | ↓ | Robbery | 0 | 0 | ● |
| Disorderly Conduct | 1 | 1 | ● | Sex Offenses | 0 | 1 | ↓ |
| Driving Under the Influence | 4 | 1 | ↑ | Sex Offenses, Nonforcible | 1 | 0 | ↑ |
| Drug Equipment Violations | 3 | 4 | ↓ | Stolen Property Offenses | 3 | 3 | ● |
| Drug/Narcotic Violations | 4 | 9 | ↓ | Trespass of Real Property | 1 | 2 | ↓ |
| Drunkenness | 0 | 0 | ● | Weapon Law Violations | 0 | 2 | ↓ |
| Embezzlement | 0 | 0 | ● | CFS Status | Q1 | 3yr Avg | Up/Down |
| Extortion/Blackmail | 1 | 1 | ● | Dispatched | 117 | 125 | ↓ |
| Family Offenses (Nonviolent) | 0 | 1 | ↓ | Initiated | 515 | 289 | ↑ |
| Fraud Offenses | 2 | 6 | ↓ | Unspecified | 218 | 142 | ↑ |
| Gambling Offenses | 0 | 0 | ● | Total | 850 | 556 | ↑ |

Note: Initiated CFS are defined by whether the created date and time listed in the CFS match the on scene date and time entered by dispatch. Additionally, follow up and assignment CFS types are included in this category. Dispatched CFS are defined by whether an on scene time is listed in the CFS, and the CFS is not initially defined as initiated. Unspecified CFS include CFS with no on scene date and time information.